

BALDOR • RELIANCE

Customer information packet

ECTM3665T-G-AO

5 AIR OVERHP, 1750RPM, 3PH, 60HZ, 184T, 0642M

Class - None

Division - Not Applicable

Specifications

Enclosure	TEAO
Frame	184T
Frame Material	Iron
Frequency	60.00 Hz
Motor Letter Type	Three Phase
Output @ Frequency	5.000 HP @ 60 HZ
Phase	3
Synchronous Speed @ Frequency	1800 RPM @ 60 HZ
Voltage @ Frequency	230.0 V @ 60 HZ 460.0 V @ 60 HZ
XP Class and Group	None
XP Division	Not Applicable
Agency Approvals	CSA EEV NEMA PREMIUM NEMA_PREMIUM UR
Ambient Temperature	60 °C
Auxillary Box	No Auxillary Box
Auxillary Box Lead Termination	None
Base Indicator	Rigid
Bearing Grease Type	Polyrex EM (-20F +300F)
Blower	None
Current @ Voltage	6.600 A @ 460.0 V 14.000 A @ 208.0 V 13.200 A @ 230.0 V
Design Code	B
Drip Cover	No Drip Cover
Duty Rating	CONT
Efficiency @ 100% Load	89.5 %
Electrically Isolated Bearing	Not Electrically Isolated
Feedback Device	NO FEEDBACK
Front Shaft Indicator	None

Part detail

Revision	C
Type	AC
Mech. spec.	06J517
Base	
Status	PRD/A
Elec. spec.	06WGY544
Layout	06LYJ517
Eff. date	09-08-2023
CD Diagram	CD0005
Poles	04
Leads	9#16
Proprietary	False
Created date	04-01-2022

Heater Indicator	Heater Included, 115 V
High Voltage Full Load Amps	6.6 a
Insulation Class	F
Inverter Code	Inverter Ready
KVA Code	J
Lifting Lugs	Vertical Lifting Lugs
Locked Bearing Indicator	Locked Bearing
Motor Lead Quantity/Wire Size	9 @ 16 AWG
Motor Lead Termination	Flying Leads
Motor Standards	NEMA
Motor Type	0642M
Mounting Arrangement	F1
Number of Poles	4
Overall Length	15.34 IN
Power Factor	79
Product Family	Chemical Processing (Not DC)
Pulley End Bearing Type	Sealed Bearing
Pulley Face Code	Standard
Pulley Shaft Indicator	Tapped & Key
Rodent Screen	None
Service Factor	1.15
Shaft Diameter	1.125 IN
Shaft Ground Indicator	Shaft Grounding
Shaft Rotation	Reversible
Shaft Slinger Indicator	Shaft Slinger
Speed	1750 rpm
Speed Code	Single Speed
Starting Method	Direct on line
Thermal Device - Bearing	None
Thermal Device - Winding	None
Vibration Sensor Indicator	No Vibration Sensor
Winding Thermal 1	None
Winding Thermal 2	None

Nameplate

NP2178									
CAT.NO.	ECTM3665T-G-AO								
SPEC.	06J517Y544G1								
HP	5 AIR OVER								
VOLTS	230/460								
AMP	13.2/6.6								
RPM	1750								
FRAME	184T		HZ	60		PH	3		
SER.F.	1.15	CODE	J	DES	B	CL	F		
NEMA-NOM-EFF	89.5	PF	79						
RATING	60C AMB-CONT								
CC									
DE	6206	ODE	6205						
ENCL	TEAO	SN							
	INV DUT 20:1 VT								

AC Induction Motor Performance Data

Record # 92599

Typical performance - not guaranteed values

Winding: 06WGY544-R002		Type: 0642M		Enclosure: TEAO		
Nameplate Data			460 V, 60 Hz: High Voltage Connection			
Rated Output (HP)	5 AIR OVER		Full Load Torque	15 LB-FT		
Volts	230/460		Start Configuration	direct on line		
Full Load Amps	13.2/6.6		Breakdown Torque	53.9 LB-FT		
R.P.M.	1750		Pull-up Torque	22.4 LB-FT		
Hz	60	Phase	3	Locked-rotor Torque	31.8 LB-FT	
NEMA Design Code	B		KVA Code	J	Starting Current	46.6 A
Service Factor (S.F.)	1.15		No-load Current	3.02 A		
NEMA Nom. Eff.	89.5	Power Factor	79	Line-line Res. @ 25°C	2.63 Ω	
Rating - Duty	60C AMB-CONT		Temp. Rise @ Rated Load	53°C		
S.F. Amps	14.6/7.3		Temp. Rise @ S.F. Load	66°C		
			Locked-rotor Power Factor	40.5		
			Rotor inertia	0.391 lb-ft ²		

Load Characteristics 460 V, 60 Hz, 5 HP

% of Rated Load	25	50	75	100	125	150	S.F.
Power Factor	41	63	75	81	84	85	83
Efficiency	85.1	89.7	90.3	89.8	88.4	86.8	89
Speed	1789	1777	1765	1752	1737	1721	1743
Line amperes	3.35	4.14	5.21	6.45	7.91	9.47	7.33

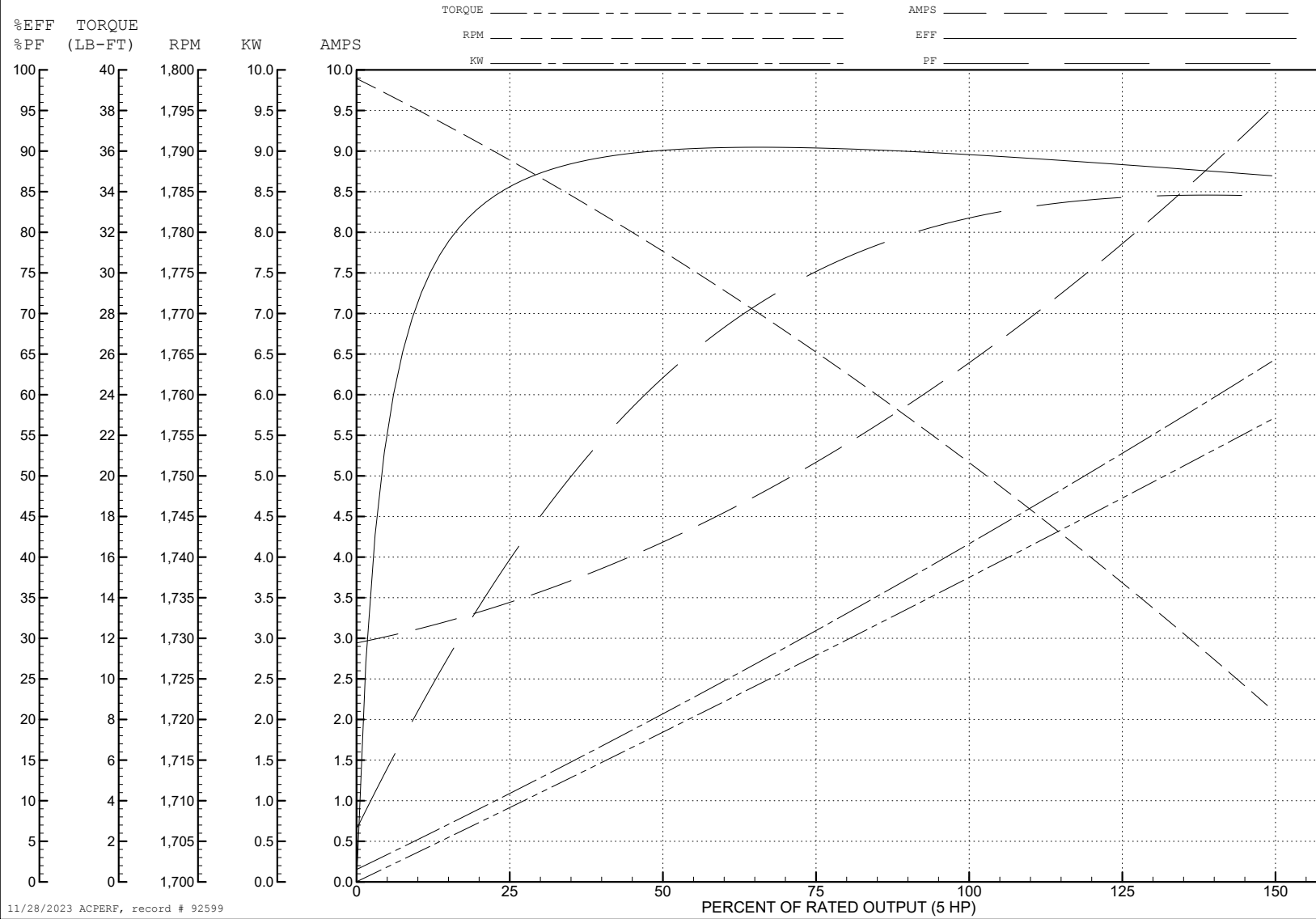
ABB Motors and Mechanical Inc.

WINDING # 06WGY544

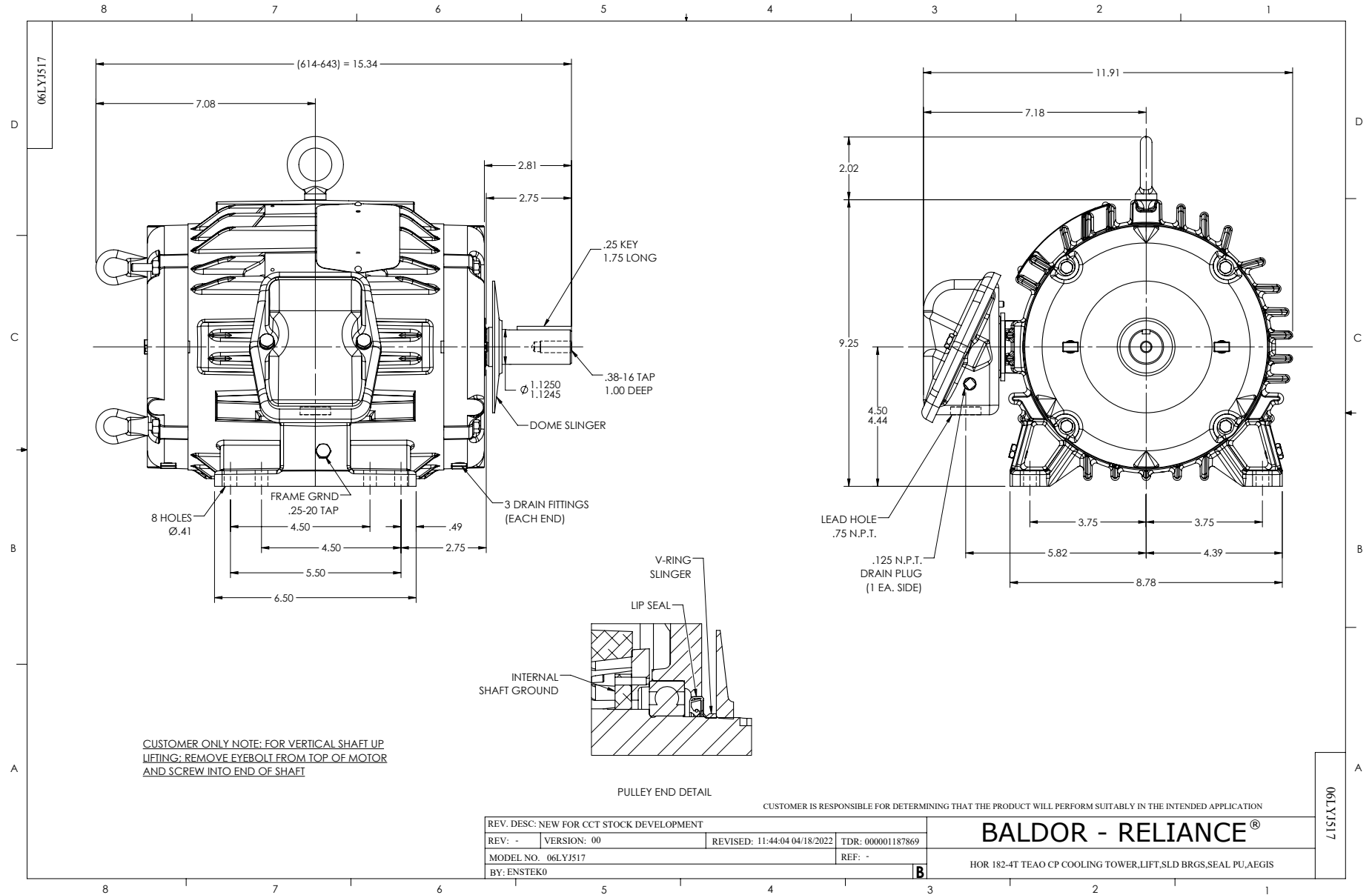
5 HP 3 PH 60 HZ 1750 RPM 460 V 0642M

Typical performance - not guaranteed values.

TORQUES (LB-FT): PO=53.9 PU=22.4 LR=31.8 LRA=46.6



11/28/2023 ACPERF, record # 92599



CD0005



LOW VOLTAGE
(2Y)



LINE

HIGH VOLTAGE
(1Y)



LINE

NOTES:

1. INTERCHANGE ANY TWO LINE LEADS TO REVERSE ROTATION.
2. OPTIONAL THERMOSTATS ARE PROVIDED WHEN SPECIFIED.
3. ACTUAL NUMBER OF INTERNAL PARALLEL CIRCUITS MAY BE A MULTIPLE OF THOSE SHOWN ABOVE.
4. LEAD COLORS ARE OPTIONAL. LEADS MUST ALWAYS BE NUMBERED AS SHOWN.

CD0005

REV. DESC: REVISE TO SHOW OPTIONAL COLORS			
REV. LTR: E	BY: JLP	REVISED: 01/19/99 10:15	TDR: 0171435
S00000		FILE: AAA00005140	MDL: -
		MTL: -	

BALDOR ELECTRIC Co.

3PH, DV, 9 LEADS