



---

# Customer information packet

## ECTM3611T-G-AO

3HP, 1760RPM, 3PH, 60HZ, 184T, 3632M, TEAO, F1

Class - None

Division - Not Applicable

## Specifications

Enclosure	TEAO
Frame	184T
Frame Material	Steel
Frequency	60.00 Hz
Haz Area Class and Group	None
Haz Area Division	Not Applicable
Motor Letter Type	Three Phase
Output @ Frequency	3.000 HP @ 60 HZ
Phase	3
Synchronous Speed @ Frequency	1800 RPM @ 60 HZ
Voltage @ Frequency	230.0 V @ 60 HZ 208.0 V @ 60 HZ 460.0 V @ 60 HZ
Agency Approvals	NEMA PREMIUM NEMA_PREMIUM UR CSA EEV
Ambient Temperature	45 °C
Auxillary Box	No Auxillary Box
Auxillary Box Lead Termination	None
Base Indicator	Rigid
Bearing Grease Type	Polyrex EM (-20F +300F)
Blower	None
Current @ Voltage	9.000 A @ 208.0 V 8.400 A @ 230.0 V 4.200 A @ 460.0 V
Design Code	B
Drip Cover	No Drip Cover
Duty Rating	CONT
Efficiency @ 100% Load	89.5 %
Electrically Isolated Bearing	Not Electrically Isolated
Feedback Device	NO FEEDBACK

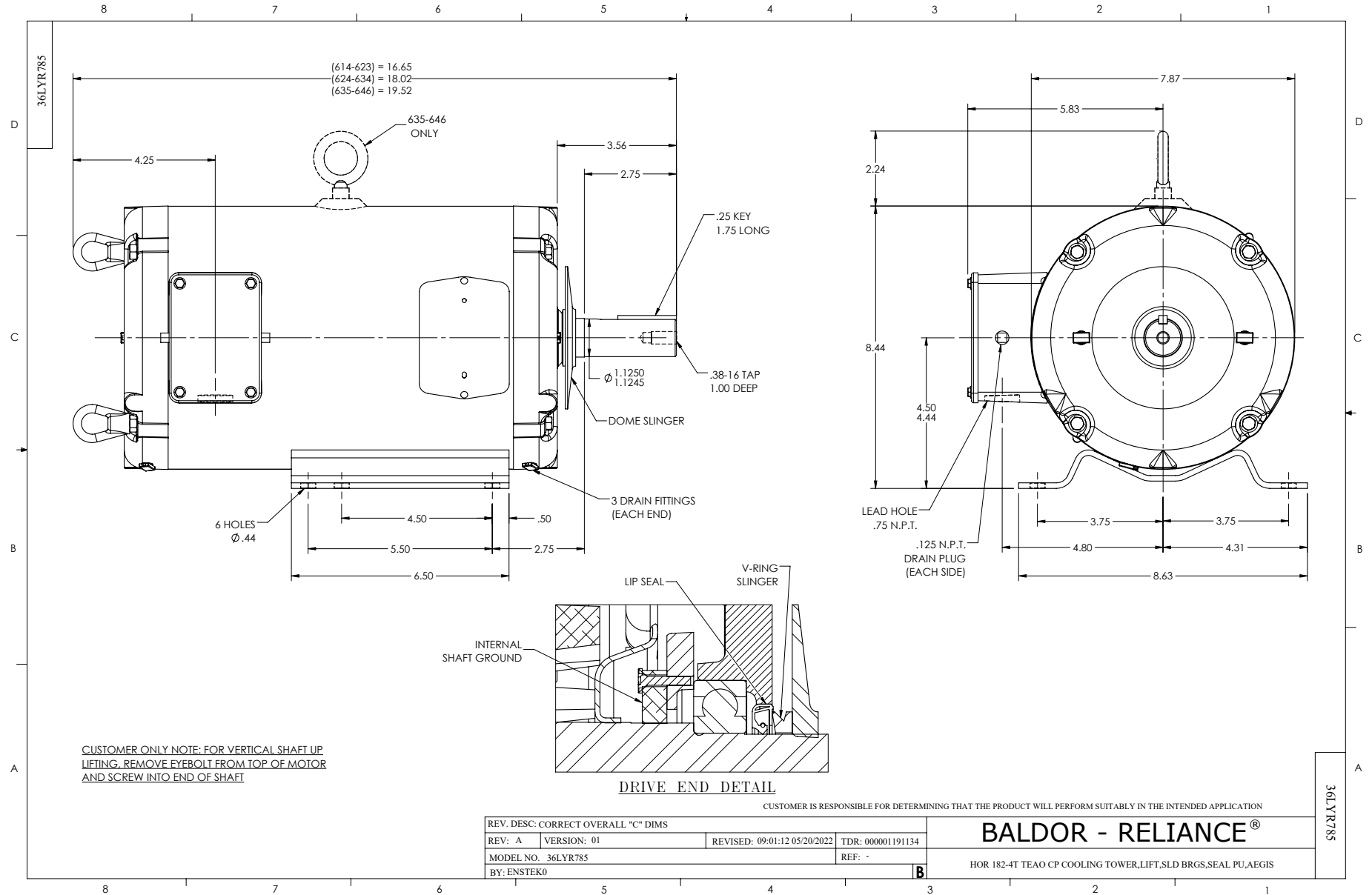
## Part detail

Revision	C
Type	AC
Mech. spec.	36R785
Base	
Status	PRD/A
Elec. spec.	36WGS266
Layout	36LYR785
Eff. date	09-08-2023
CD Diagram	CD0005
Poles	04
Leads	9#16
Proprietary	False
Created date	03-31-2022

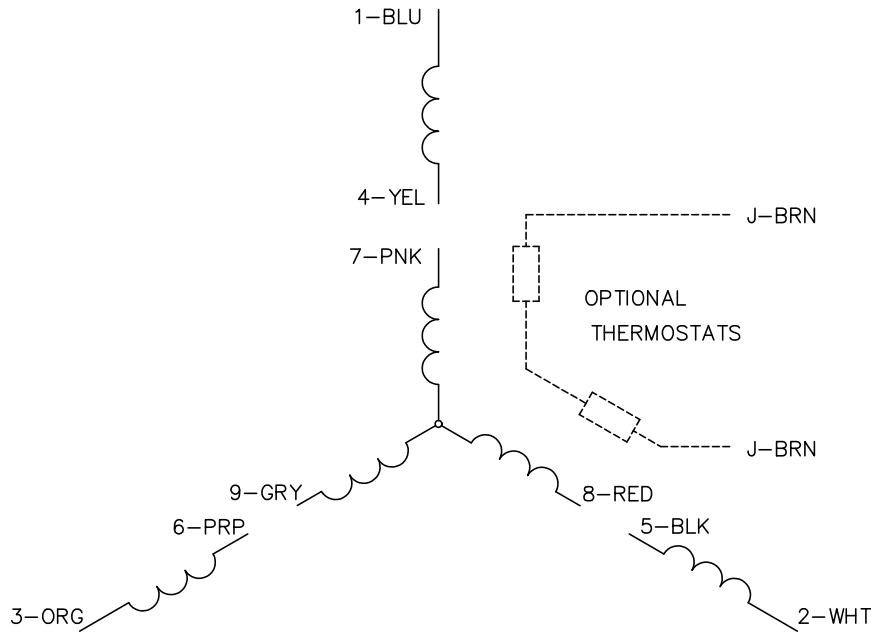
Front Shaft Indicator	None
Heater Indicator	Heater Included, 120 V
High Voltage Full Load Amps	4.2 a
Insulation Class	F
Inverter Code	Not Inverter
KVA Code	K
Lifting Lugs	Vertical Lifting Lugs
Locked Bearing Indicator	Locked Bearing
Motor Lead Quantity/Wire Size	9 @ 16 AWG
Motor Lead Termination	Flying Leads
Motor Standards	NEMA
Motor Type	3632M
Mounting Arrangement	F1
Number of Poles	4
Overall Length	16.52 IN
Power Factor	75
Product Family	Chemical Process Features
Pulley End Bearing Type	Ball
Pulley Face Code	Standard
Pulley Shaft Indicator	Standard
Rodent Screen	None
Service Factor	1.15
Shaft Diameter	1.125 IN
Shaft Ground Indicator	Shaft Grounding
Shaft Rotation	Reversible
Shaft Slinger Indicator	Shaft Slinger
Speed	1760 rpm
Speed Code	Single Speed
Starting Method	Direct on line
Thermal Device - Bearing	None
Thermal Device - Winding	None
Vibration Sensor Indicator	No Vibration Sensor
Winding Thermal 1	None
Winding Thermal 2	None

**Nameplate**

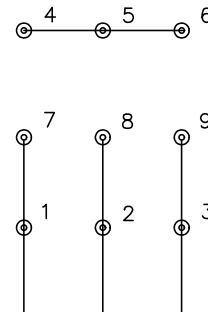
<b>NP2178</b>							
<b>CAT.NO.</b>	ECTM3611T-G-AO						
<b>SPEC.</b>	36R785S266G1						
<b>HP</b>	3						
<b>VOLTS</b>	208-230/460						
<b>AMP</b>	9-8.4/4.2						
<b>RPM</b>	1760						
<b>FRAME</b>	184T	<b>HZ</b>	60	<b>PH</b>	3		
<b>SER.F.</b>	1.15	<b>CODE</b>	K	<b>DES</b>	B	<b>CL</b>	F
<b>NEMA-NOM-EFF</b>	89.5	<b>PF</b>	75				
<b>RATING</b>	45C AMB-CONT						
<b>CC</b>							
<b>DE</b>	6206	<b>ODE</b>	6205				
<b>ENCL</b>	TEAO	<b>SN</b>					
	INV DUT 20:1 VT						



CD0005

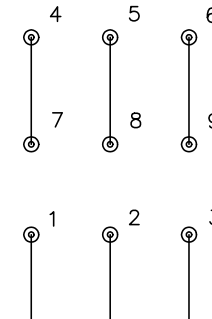


LOW VOLTAGE  
(2Y)



LINE

HIGH VOLTAGE  
(1Y)



LINE

**NOTES:**

1. INTERCHANGE ANY TWO LINE LEADS TO REVERSE ROTATION.
2. OPTIONAL THERMOSTATS ARE PROVIDED WHEN SPECIFIED.
3. ACTUAL NUMBER OF INTERNAL PARALLEL CIRCUITS MAY BE A MULTIPLE OF THOSE SHOWN ABOVE.
4. LEAD COLORS ARE OPTIONAL. LEADS MUST ALWAYS BE NUMBERED AS SHOWN.

CD0005

REV. DESC: REVISE TO SHOW OPTIONAL COLORS			
REV. LTR: E	BY: JLP	REVISED: 01/19/99 10:15	TDR: 0171435
S00000		FILE: AAA00005140	MDL: -
		MTL: -	

**BALDOR ELECTRIC Co.**

3PH, DV, 9 LEADS