



Customer information packet

ECTM3611T-57

3 AIR OVERHP, 1460RPM, 3PH, 50HZ, 213TZ, 3728

Class - None

Division - Not Applicable

Specifications

Enclosure	TEAO
Frame	213TZ
Frame Material	Steel
Frequency	50.00 Hz
Haz Area Class and Group	None
Haz Area Division	Not Applicable
Motor Letter Type	Three Phase
Output @ Frequency	3.000 HP @ 50 HZ
Phase	3
Synchronous Speed @ Frequency	1500 RPM @ 50 HZ
Voltage @ Frequency	230.0 V @ 50 HZ 380.0 V @ 50 HZ 415.0 V @ 50 HZ
Agency Approvals	CSA CE UR
Ambient Temperature	40 °C
Auxillary Box	No Auxillary Box
Auxillary Box Lead Termination	None
Base Indicator	Rigid
Bearing Grease Type	Polyrex EM (-20F +300F)
Blower	None
Current @ Voltage	4.800 A @ 415.0 V 4.900 A @ 380.0 V 8.400 A @ 230.0 V
Design Code	B
Drip Cover	No Drip Cover
Duty Rating	CONT
Efficiency @ 100% Load	87.5 %
Electrically Isolated Bearing	Not Electrically Isolated
Feedback Device	NO FEEDBACK
Front Face Code	Standard

Part detail

Revision	H
Type	AC
Mech. spec.	37Q128
Base	
Status	PRD/A
Elec. spec.	37WGL440
Layout	37LYQ128
Eff. date	05-14-2024
CD Diagram	CD0022
Poles	04
Leads	6#14
Proprietary	False
Created date	03-07-2017

Front Shaft Indicator	None
Heater Indicator	No Heater
High Voltage Full Load Amps	4.8 a
Insulation Class	F
Inverter Code	Inverter Ready
KVA Code	L
Lifting Lugs	Standard Lifting Lugs
Locked Bearing Indicator	No Locked Bearing
Motor Lead Exit	Ko Box
Motor Lead Quantity/Wire Size	6 @ 14 AWG
Motor Lead Termination	Flying Leads
Motor Standards	NEMA
Motor Type	3728M
Mounting Arrangement	F1
Number of Poles	4
Overall Length	16.32 IN
Power Factor	73
Product Family	WP Below Decks Marine Duty
Pulley End Bearing Type	Ball
Pulley Face Code	Standard
Pulley Shaft Indicator	Tapped & Key
Rodent Screen	None
RoHS Status	ROHS COMPLIANT
Service Factor	1.00
Shaft Diameter	1.375 IN
Shaft Extension Location	Pulley End
Shaft Ground Indicator	No Shaft Grounding
Shaft Rotation	Reversible
Shaft Slinger Indicator	Shaft Slinger
Speed	1460 rpm
Speed Code	Single Speed
Starting Method	Direct on line
Thermal Device - Bearing	None
Thermal Device - Winding	None

Vibration Sensor Indicator	No Vibration Sensor
Winding Thermal 1	None
Winding Thermal 2	None

Nameplate

NP2735L										
CAT NO	ECTM3611T-57									
SPEC.	37Q128L440G1									
HP	3/2.2KW AIR OVER						PH	3		
VOLTS	230/380-415									
AMP	8.4/4.9-4.8									
RPM	1460 1/MIN									
FRAME	213TZ		HZ	50			I.P.	55		
SER.F.	1.00	CODE	L	DES	B	CL	F			
NOM.EFF.	87.5		% (100%)							
PF	73		USABLE AT 208V				N/A			
RATING	40C AMB-CONT			CC						
DE BRG	6307		ODE	6206						
ENCL	TEAO	SN								
BLANK	IE3 - 87.9 (75%) 84.8 (50%)									
	IC418 53KG									

AC Induction Motor Performance Data

Record # 62989

Typical performance - not guaranteed values

Winding: 37WGL440-R001		Type: 3728M		Enclosure: TEAO		
Nameplate Data			415 V, 50 Hz: High Voltage Connection			
Rated Output (HP)	3 AIR OVER		Full Load Torque	10.71 LB-FT		
Volts	230/380-415		Start Configuration	direct on line		
Full Load Amps	8.4/4.9-4.8		Breakdown Torque	43.22 LB-FT		
R.P.M.	1460		Pull-up Torque	27.12 LB-FT		
Hz	50	Phase	3	Locked-rotor Torque	30.78 LB-FT	
NEMA Design Code	B		KVA Code	L	Starting Current	40.01 A
Service Factor (S.F.)	1		No-load Current	2.85 A		
NEMA Nom. Eff.	87.5	Power Factor	73	Line-line Res. @ 25°C	2.72 Ω	
Rating - Duty	40C AMB-CONT		Temp. Rise @ Rated Load	27°C		
			Locked-rotor Power Factor	46		
			Rotor inertia	0.689 LB-FT ²		

Load Characteristics 415 V, 50 Hz, 3 HP

% of Rated Load	25	50	75	100	125	150
Power Factor	34	53	66	73	78	81
Efficiency	76.9	84.8	87.8	88.5	87.8	87.4
Speed	1493	1486	1478	1470	1462	1452
Line amperes	3.01	3.42	4.05	4.79	5.64	6.61

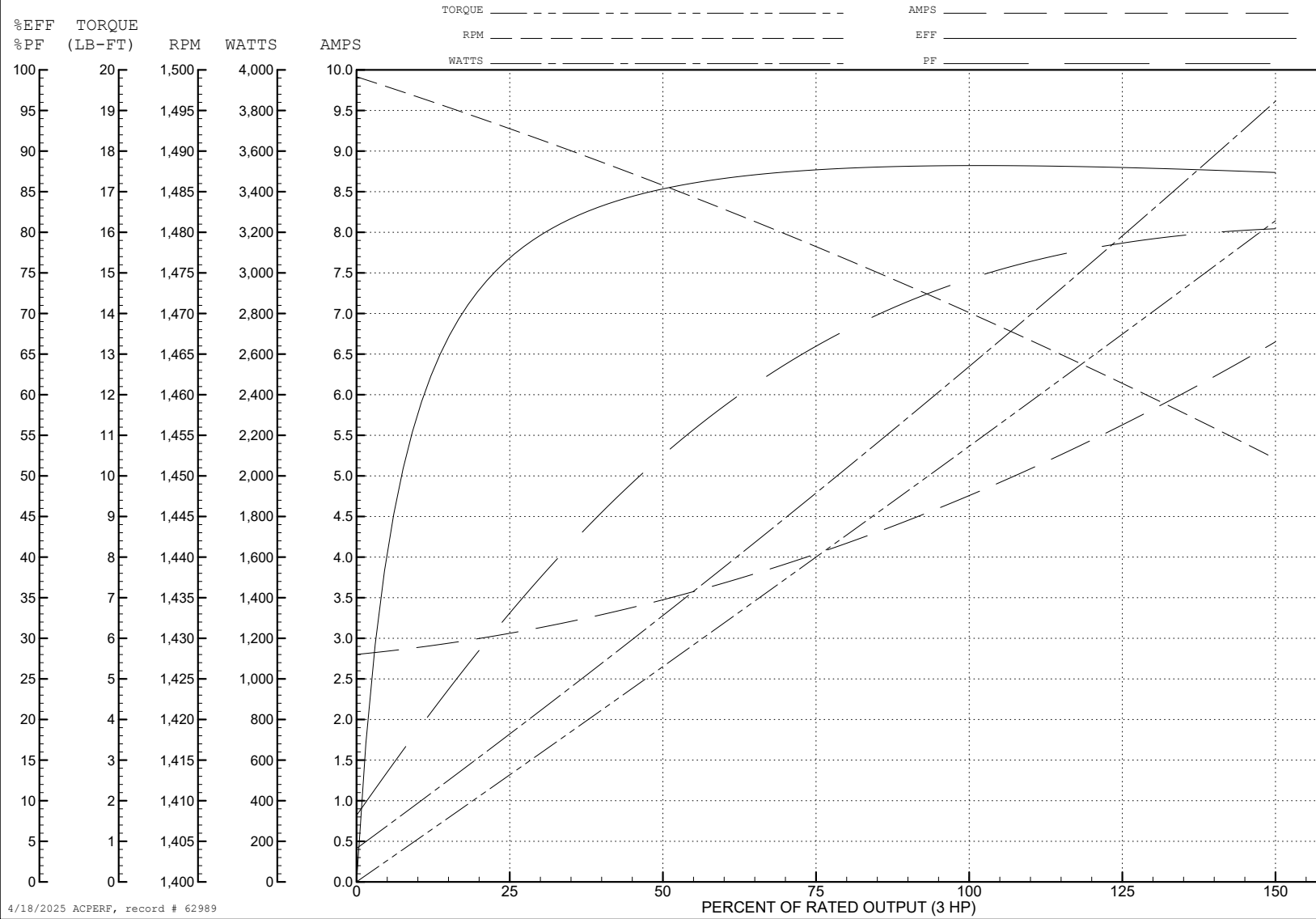
ABB Motors and Mechanical Inc.

WINDING # 37WGL440

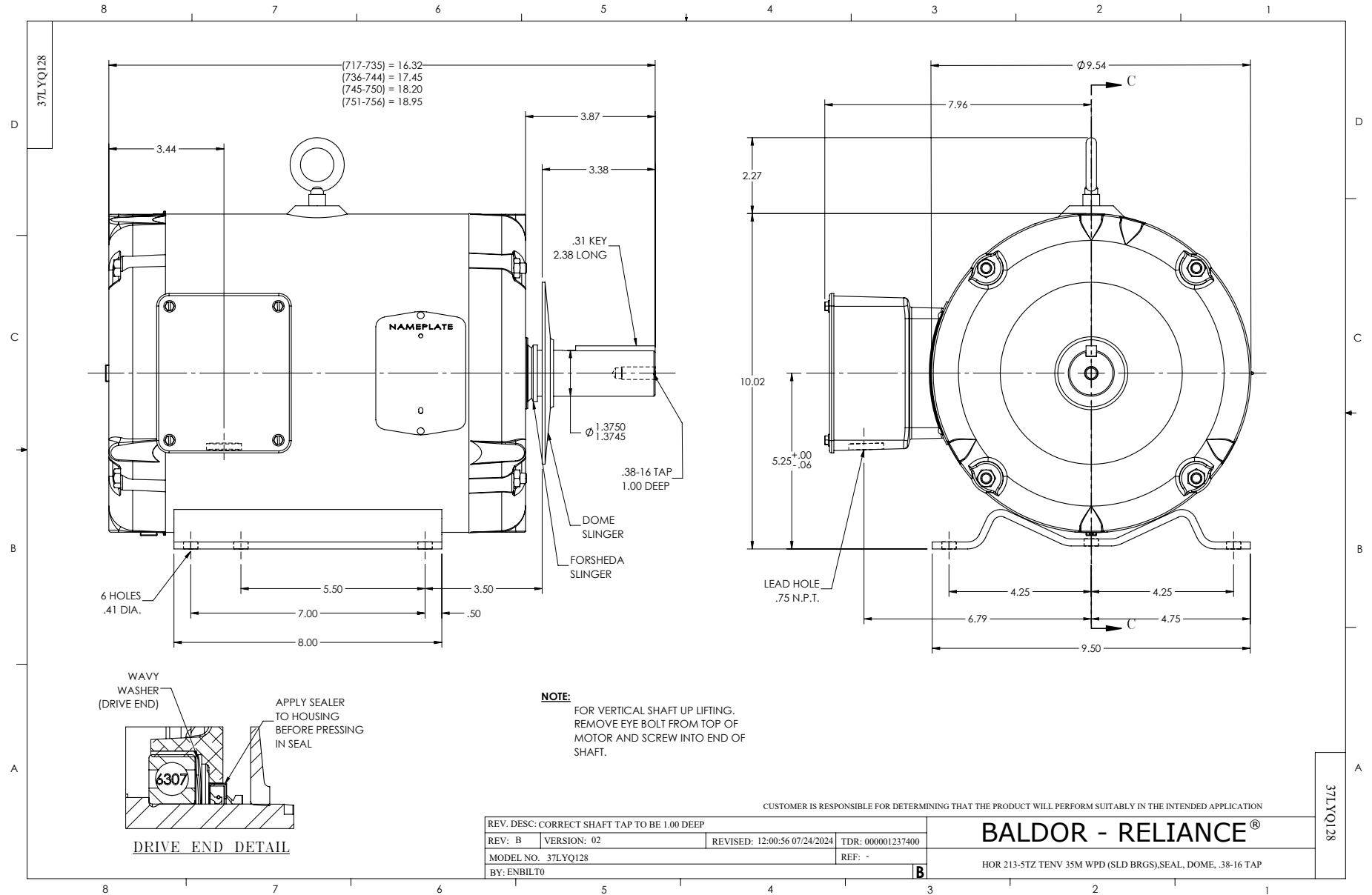
3 HP 3 PH 50 HZ 1460 RPM 415 V 3728M

Typical performance - not guaranteed values.

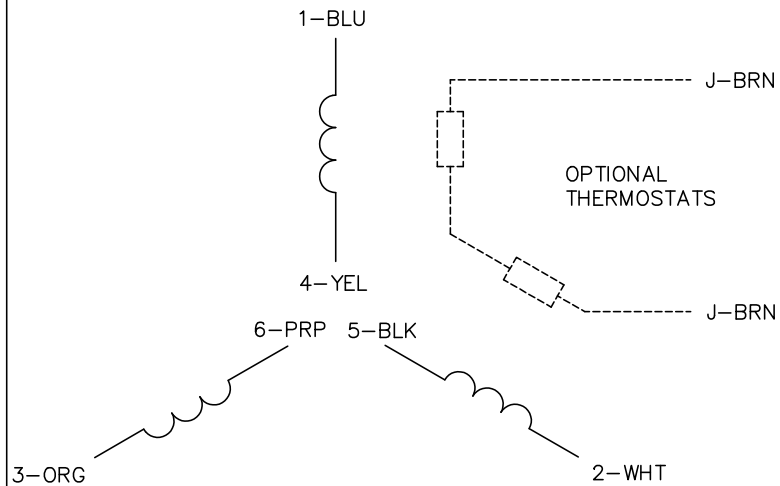
TORQUES (LB-FT): PO=43.22 PU=27.12 LR=30.78 LRA=40.01



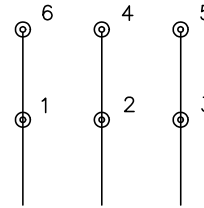
4/18/2025 ACPERF, record # 62989



CD0022

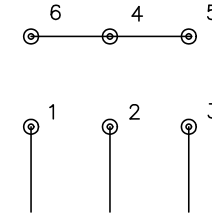


LOW VOLTAGE
(1D)



LINE

HIGH VOLTAGE
(1Y)



LINE

NOTES:

1. INTERCHANGE ANY TWO LINE LEADS TO REVERSE ROTATION.
2. OPTIONAL THERMOSTATS ARE PROVIDED WHEN SPECIFIED.
3. ACTUAL NUMBER OF INTERNAL PARALLEL CIRCUITS MAY BE A MULTIPLE OF THOSE SHOWN ABOVE.
4. LEAD COLORS ARE OPTIONAL. LEADS MUST ALWAYS BE NUMBERED AS SHOWN.

REV. DESC: REVISE TO SHOW OPTIONAL COLORS			
REV. LTR: F	BY: JLP	REVISED: 01/21/99 3:54	TDR: 0171435
CD0022		FILE: AAA00005144	MDL: -
		MTL: -	

BALDOR ELECTRIC Co.

3PH, DV, 6 LEADS, DELTA/WYE CONNECTION

CD0022