

**BALDOR • RELIANCE**

---

# Customer information packet

## ECTM2332T

10 AIR OVERHP, 1180RPM, 3PH, 60HZ, 256T, 0960

Class - None

Division - Not Applicable

Copyright © All product information within this document is subject to ABB Motors and Mechanical Inc. copyright © protection, unless otherwise noted.

6/13/2024 2:23:02 AM

## Specifications

Enclosure	TEAO
Frame	256T
Frame Material	Iron
Frequency	60.00 Hz
Haz Area Class and Group	None
Haz Area Division	Not Applicable
Motor Letter Type	Three Phase
Output @ Frequency	10.000 HP @ 60 HZ
Phase	3
Synchronous Speed @ Frequency	1200 RPM @ 60 HZ
Voltage @ Frequency	460.0 V @ 60 HZ 230.0 V @ 60 HZ
Agency Approvals	CSA CSA EEV UR
Ambient Temperature	40 °C
Auxillary Box	No Auxillary Box
Auxillary Box Lead Termination	None
Base Indicator	Rigid
Bearing Grease Type	Polyrex EM (-20F +300F)
Blower	None
Current @ Voltage	28.200 A @ 230.0 V 30.000 A @ 208.0 V 14.100 A @ 460.0 V
Design Code	B
Drip Cover	No Drip Cover
Duty Rating	CONT
Efficiency @ 100% Load	91.0 %
Electrically Isolated Bearing	Not Electrically Isolated
Feedback Device	NO FEEDBACK
Front Face Code	Standard
Front Shaft Indicator	None

## Part detail

Revision	Y
Type	AC
Mech. spec.	09L877
Base	
Status	PRD/A
Elec. spec.	09WGT193
Layout	09LYL877
Eff. date	11-14-2023
CD Diagram	CD0005
Poles	06
Leads	9#12
Proprietary	False
Created date	08-14-2015

Heater Indicator	No Heater
High Voltage Full Load Amps	14.1 a
Insulation Class	F
Inverter Code	Inverter Ready
KVA Code	H
Lifting Lugs	Vertical Lifting Lugs
Locked Bearing Indicator	Locked Bearing
Motor Lead Exit	Ko Box
Motor Lead Quantity/Wire Size	9 @ 12 AWG
Motor Lead Termination	Flying Leads
Motor Standards	NEMA
Motor Type	0960M
Mounting Arrangement	F1
Number of Poles	6
Overall Length	23.00 IN
Power Factor	72
Product Family	Super-E Chemical Processing
Pulley End Bearing Type	Sealed Bearing
Pulley Face Code	Standard
Pulley Shaft Indicator	Standard
Rodent Screen	None
Service Factor	1.15
Shaft Diameter	1.625 IN
Shaft Extension Location	Pulley End
Shaft Ground Indicator	No Shaft Grounding
Shaft Rotation	Reversible
Shaft Slinger Indicator	Shaft Slinger
Speed	1180 rpm
Speed Code	Single Speed
Starting Method	Direct on line
Thermal Device - Bearing	None
Thermal Device - Winding	None
Vibration Sensor Indicator	No Vibration Sensor
Winding Thermal 1	None

**Winding Thermal 2**

**None**

---

**Nameplate**

<b>NP2178</b>									
<b>CAT.NO.</b>	ECTM2332T								
<b>SPEC.</b>	09L877T193G1								
<b>HP</b>	10 AIR OVER								
<b>VOLTS</b>	230/460								
<b>AMP</b>	28.2/14.1								
<b>RPM</b>	1180								
<b>FRAME</b>	256T		<b>HZ</b>	60		<b>PH</b>	3		
<b>SER.F.</b>	1.15	<b>CODE</b>	H	<b>DES</b>	B	<b>CL</b>	F		
<b>NEMA-NOM-EFF</b>	91	<b>PF</b>	72						
<b>RATING</b>	40C AMB-CONT								
<b>CC</b>									
<b>DE</b>	6309	<b>ODE</b>	6208						
<b>ENCL</b>	TEAO	<b>SN</b>							
	1800 FPM @ 250CFM								

**AC Induction Motor Performance Data**

Record # 52109

Typical performance - not guaranteed values

Winding: 09WGT193-R004			Type: 0960M			Enclosure: TEAO		
<b>Nameplate Data</b>				<b>460 V, 60 Hz: High Voltage Connection</b>				
Rated Output (HP)	10 AIR OVER			Full Load Torque	44.3 LB-FT			
Volts	230/460			Start Configuration	direct on line			
Full Load Amps	28.2/14.1			Breakdown Torque	121 LB-FT			
R.P.M.	1180			Pull-up Torque	50.6 LB-FT			
Hz	60	Phase	3	Locked-rotor Torque	67 LB-FT			
NEMA Design Code	B		KVA Code	H	Starting Current	81 A		
Service Factor (S.F.)	1.15			No-load Current	6.84 A			
NEMA Nom. Eff.	91	Power Factor	72	Line-line Res. @ 25°C	0.746 Ω			
Rating - Duty	40C AMB-CONT			Temp. Rise @ Rated Load	38°C			
S.F. Amps				Temp. Rise @ S.F. Load	46°C			
				Locked-rotor Power Factor	24.9			
				Rotor inertia	4.82 LB-FT <sup>2</sup>			

**Load Characteristics 460 V, 60 Hz, 10 HP**

% of Rated Load	25	50	75	100	125	150	S.F.
Power Factor	36	57	67	72	74	75	73
Efficiency	85.8	90.7	91.9	91.7	91.1	89.4	91.3
Speed	1195	1191	1186	1181	1174	1166	1177
Line amperes	7.45	9.13	11.4	14.1	17.3	21.1	16

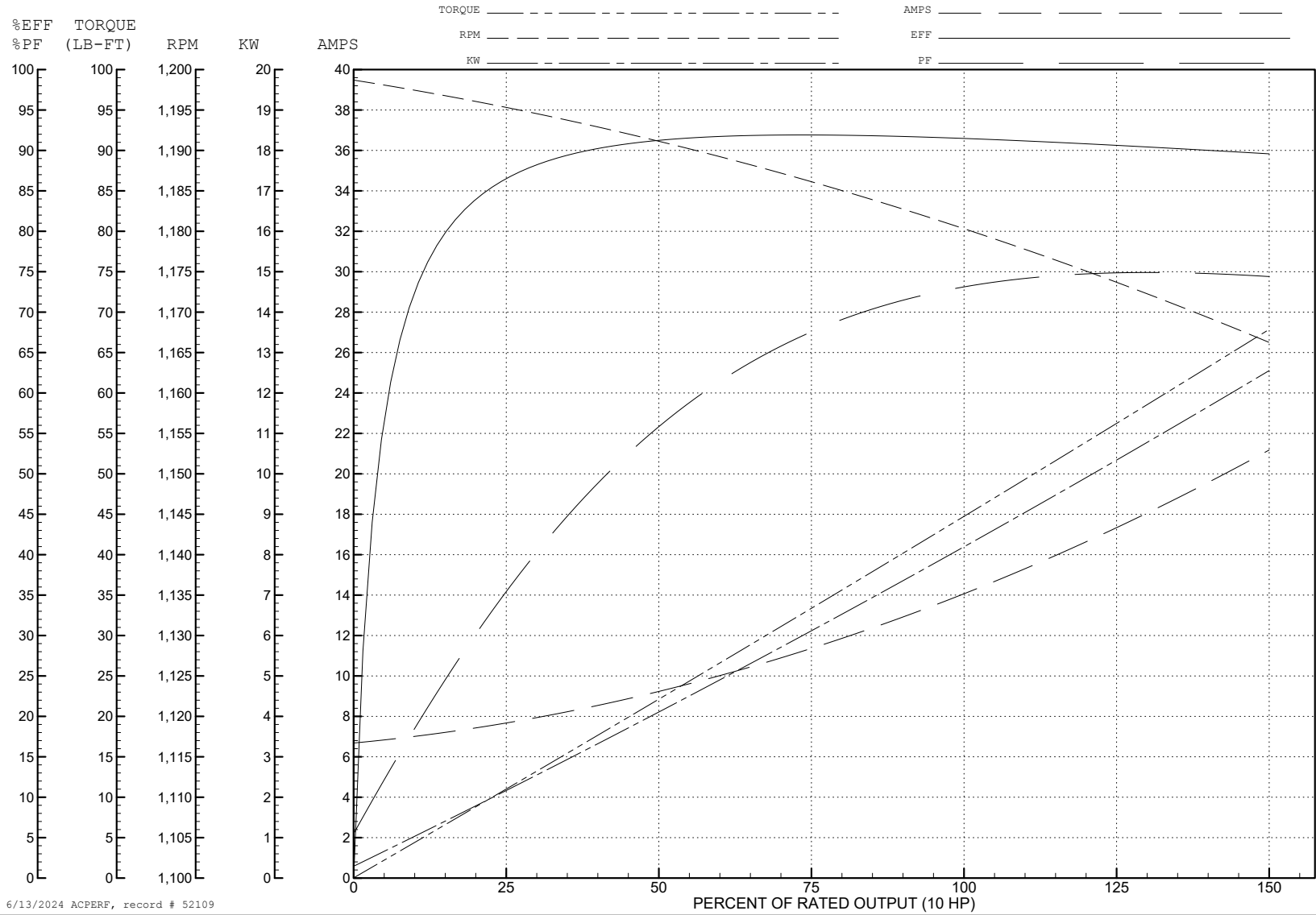
ABB Motors and Mechanical Inc.

WINDING # 09WGT193

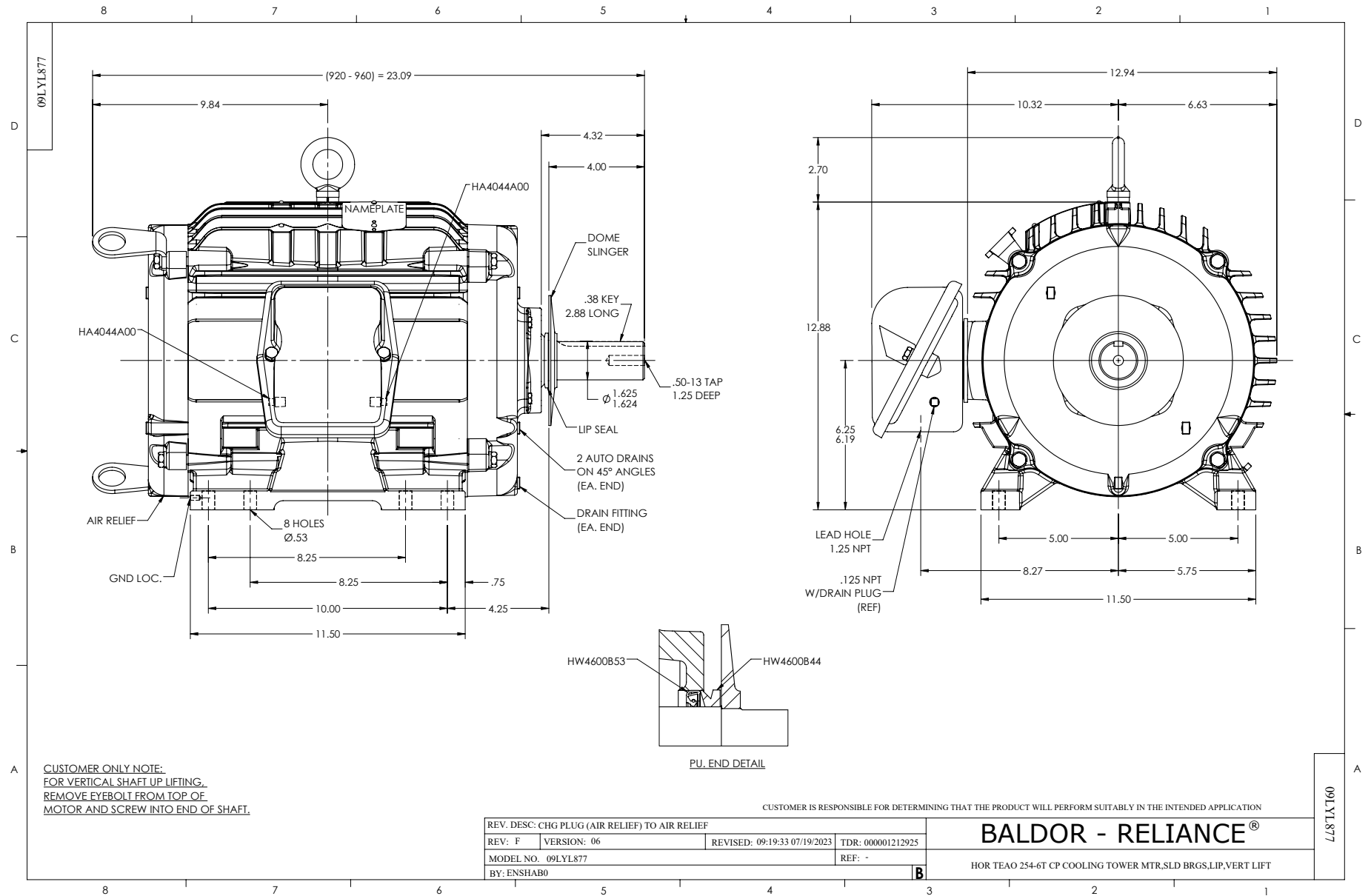
Typical performance - not guaranteed values.

10 HP 3 PH 60 HZ 1180 RPM 460 V 0960M

TORQUES (LB-FT): PO=121 PU=50.6 LR=67 LRA=81



6/13/2024 ACPERF, record # 52109

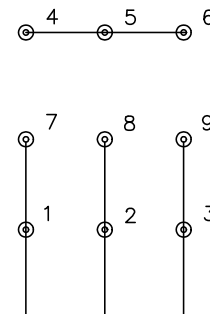




CD0005

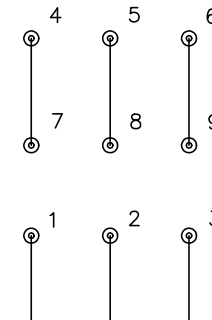


LOW VOLTAGE  
(2Y)



LINE

HIGH VOLTAGE  
(1Y)



LINE

NOTES:

1. INTERCHANGE ANY TWO LINE LEADS TO REVERSE ROTATION.
2. OPTIONAL THERMOSTATS ARE PROVIDED WHEN SPECIFIED.
3. ACTUAL NUMBER OF INTERNAL PARALLEL CIRCUITS MAY BE A MULTIPLE OF THOSE SHOWN ABOVE.
4. LEAD COLORS ARE OPTIONAL. LEADS MUST ALWAYS BE NUMBERED AS SHOWN.

CD0005

REV. DESC: REVISE TO SHOW OPTIONAL COLORS			
REV. LTR: E	BY: JLP	REVISED: 01/19/99 10:15	TDR: 0171435
S00000		FILE: AAA00005140	MDL: -
		MTL: -	

**BALDOR ELECTRIC Co.**

3PH, DV, 9 LEADS