

**BALDOR • RELIANCE**

---

# Customer information packet

## ECTM2332T-5G

10HP, 1180RPM, 3PH, 60HZ, 256T, 0960M, TEFC, F1

Class - None

Division - Not Applicable

Copyright © All product information within this document is subject to ABB Motors and Mechanical Inc. copyright © protection, unless otherwise noted.

11/6/2024 5:57:35 PM

## Specifications

Enclosure	TEFC
Frame	256T
Frame Material	Iron
Frequency	60.00 Hz
Haz Area Class and Group	None
Haz Area Division	Not Applicable
Motor Letter Type	Three Phase
Output @ Frequency	10.000 HP @ 60 HZ
Phase	3
Synchronous Speed @ Frequency	1200 RPM @ 60 HZ
Voltage @ Frequency	575.0 V @ 60 HZ
Agency Approvals	CSA EEV NEMA PREMIUM NEMA_PREMIUM UR
Ambient Temperature	40 °C
Auxillary Box	No Auxillary Box
Auxillary Box Lead Termination	None
Base Indicator	Rigid
Bearing Grease Type	Polyrex EM (-20F +300F)
Blower	None
Current @ Voltage	11.400 A @ 575.0 V
Design Code	B
Drip Cover	No Drip Cover
Duty Rating	CONT
Efficiency @ 100% Load	91.7 %
Electrically Isolated Bearing	Not Electrically Isolated
Feedback Device	NO FEEDBACK
Front Shaft Indicator	Tapped & Key
Heater Indicator	Heater Included, 115 V
High Voltage Full Load Amps	11.4 a
Insulation Class	F

## Part detail

Revision	G
Type	AC
Mech. spec.	09N188
Base	
Status	PRD/A
Elec. spec.	09WGT014
Layout	09LYN188
Eff. date	11-20-2023
CD Diagram	CD0006
Poles	06
Leads	3#12
Proprietary	False
Created date	04-13-2022

Inverter Code	Inverter Ready
KVA Code	H
Lifting Lugs	Vertical Lifting Lugs
Locked Bearing Indicator	Locked Bearing
Motor Lead Quantity/Wire Size	3 @ 12 AWG
Motor Lead Termination	Flying Leads
Motor Standards	NEMA
Motor Type	0960M
Mounting Arrangement	F1
Number of Poles	6
Overall Length	23.55 IN
Power Factor	71
Product Family	Chemical Processing (Not DC)
Pulley End Bearing Type	Sealed Bearing
Pulley Face Code	Standard
Pulley Shaft Indicator	Tapped & Key
Rodent Screen	None
RoHS Status	ROHS COMPLIANT
Service Factor	1.15
Shaft Diameter	1.625 IN
Shaft Ground Indicator	Shaft Grounding
Shaft Rotation	Reversible
Shaft Slinger Indicator	Shaft Slinger
Speed	1180 rpm
Speed Code	Single Speed
Starting Method	Direct on line
Thermal Device - Bearing	None
Thermal Device - Winding	None
Vibration Sensor Indicator	No Vibration Sensor
Winding Thermal 1	None
Winding Thermal 2	None

**Nameplate**

<b>NP1260</b>									
<b>CAT.NO.</b>	ECTM2332T-5G								
<b>SPEC.</b>	09N188T014G1								
<b>HP</b>	10								
<b>VOLTS</b>	575								
<b>AMP</b>	11.4								
<b>RPM</b>	1180								
<b>FRAME</b>	256T	<b>HZ</b>	60	<b>PH</b>	3				
<b>SER.F.</b>	1.15	<b>CODE</b>	H	<b>DES</b>	B	<b>CL</b>	F		
<b>NEMA-NOM-EFF</b>	91.7	<b>PF</b>	71						
<b>RATING</b>	40C AMB-CONT								
<b>CC</b>									
<b>DE</b>	6309	<b>ODE</b>	6208						
<b>ENCL</b>	TEFC	<b>SN</b>							
	INV DUTY 20:1 VT								

**AC Induction Motor Performance Data**

Record # 43549

Typical performance - not guaranteed values

Winding: 09WGT014-R001		Type: 0960M		Enclosure: TEFC	
<b>Nameplate Data</b>			<b>575 V, 60 Hz: Single Voltage Motor</b>		
Rated Output (HP)		10	Full Load Torque		44.3 LB-FT
Volts		575	Start Configuration		direct on line
Full Load Amps		11.4	Breakdown Torque		127 LB-FT
R.P.M.		1180	Pull-up Torque		53.4 LB-FT
Hz	60 Phase	3	Locked-rotor Torque		70.7 LB-FT
NEMA Design Code	B KVA Code	H	Starting Current		68.4 A
Service Factor (S.F.)		1.15	No-load Current		5.81 A
NEMA Nom. Eff.	91.7 Power Factor	71	Line-line Res. @ 25°C		1.15 Ω
Rating - Duty		40C AMB-CONT	Temp. Rise @ Rated Load		38°C
S.F. Amps			Temp. Rise @ S.F. Load		46°C
			Locked-rotor Power Factor		25.2
			Rotor inertia		4.82 lb-ft <sup>2</sup>

**Load Characteristics 575 V, 60 Hz, 10 HP**

% of Rated Load	25	50	75	100	125	150	S.F.
Power Factor	35	55	66	71	74	75	73
Efficiency	85.5	90.5	91.8	91.7	91	89.5	91.3
Speed	1195	1191	1187	1182	1175	1168	1178
Line amperes	6.27	7.57	9.34	11.4	13.9	16.9	12.9

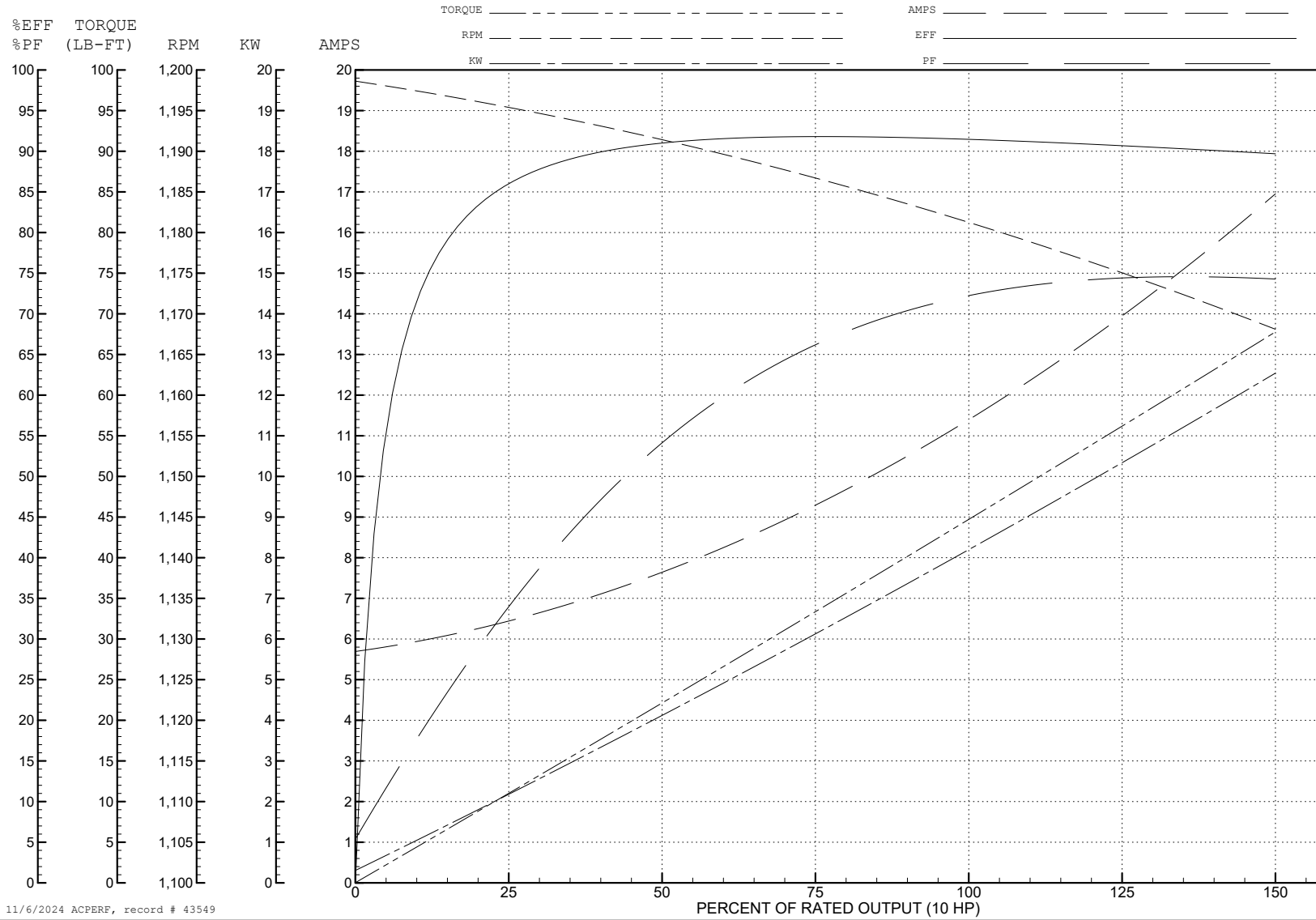
ABB Motors and Mechanical Inc.

WINDING # 09WGT014

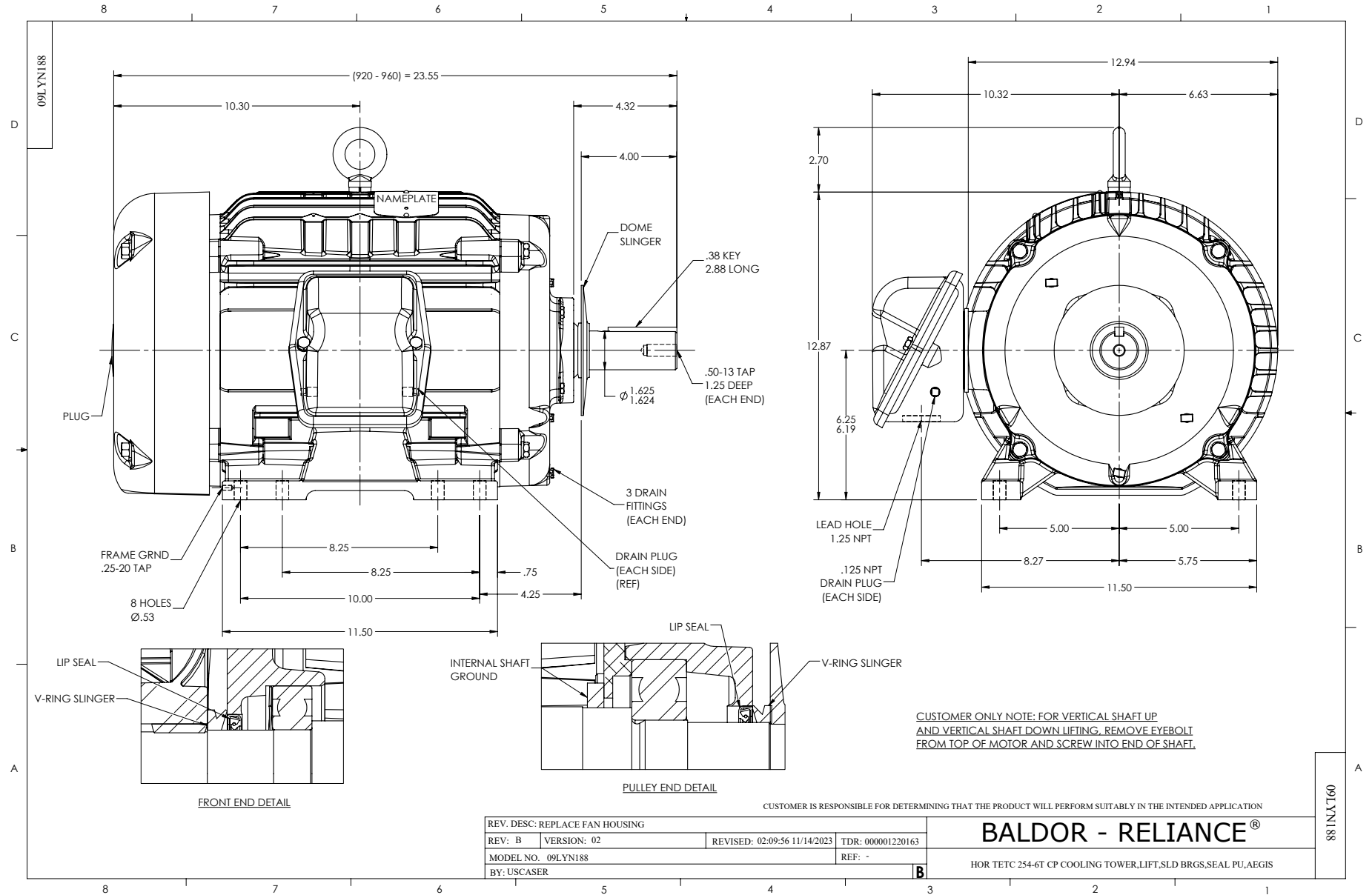
10 HP 3 PH 60 HZ 1180 RPM 575 V 0960M

Typical performance - not guaranteed values.

TORQUES (LB-FT): PO=127 PU=53.4 LR=70.7 LRA=68.4



11/6/2024 ACPERF, record # 43549



CD0006



NOTES:

1. THREE LEAD MOTOR MAY BE EITHER WYE CONNECTED OR DELTA CONNECTED.
2. INTERCHANGE ANY TWO LINE LEADS TO REVERSE ROTATION.
3. OPTIONAL THERMOSTATS ARE PROVIDED WHEN SPECIFIED.
4. ACTUAL NUMBER OF INTERNAL PARALLEL CIRCUITS MAY VARY.
5. LEAD COLORS ARE OPTIONAL. LEADS MUST BE NUMBERED AS SHOWN.

CD0006

REV. DESC: ADD CLASS CONN00000007		
REV. LTR: E	VERSION: 01	TDR: 000001099922
FILE: \AAA\00005\141	REVISED: 10:24:49 02/19/2019	BY: ENBRIRO
MTL: -	© □	

**BALDOR - RELIANCE®**

3PH, SV, 3 LEADS, WYE OR DELTA CONNECTED

SH 1 of 1