

ABB BALDOR RELIANCE III

Customer information packet

ECS101T3K0P8DF4

.75KW, 1500RPM, 3PH, 50HZ, D90S, 3516B, TEFC, B

Class - None

Division - Not Applicable

Specifications

| | |
|---------------------------------------|--------------------------------|
| Enclosure | TEFC |
| Frame | D90S |
| Frame Material | Steel |
| Frequency | 50.00 Hz |
| Haz Area Class and Group | None |
| Haz Area Division | Not Applicable |
| Motor Letter Type | Brushless Wound Field PM Rotor |
| Output @ Frequency | .750 KW @ 50 HZ |
| Phase | 3 |
| Synchronous Speed @ Frequency | 1500 RPM @ 50 HZ |
| Voltage @ Frequency | 380.0 V @ 50 HZ |
| Agency Approvals | CE CULUS UKCA WEEE |
| Ambient Temperature | 40 °C |
| Auxiliary Box | NO AUXILLARY BOX |
| Auxiliary Box Lead Termination | None |
| Base Indicator | Rigid |
| Bearing Grease Type | Polyrex EM (-20F +300F) |
| Blower | None |
| Constant Torque Speed Range | 5 |
| Current @ Voltage | 1.400 A @ 380.0 V |
| Design Code | - |
| Drip Cover | No Drip Cover |
| Duty Rating | CONT |
| Efficiency @ 100% Load | 89.2 % |
| Electrically Isolated Bearing | Not Electrically Isolated |
| Feedback Device | NO FEEDBACK |
| Frame Prefix | D |
| Heater Indicator | No Heater |
| High Voltage Full Load Amps | 1.4 a |

Part Detail

| | |
|---------------------|-----------------------|
| Revision | C |
| Type | AC |
| Mech. spec. | 35EE436 |
| Base | |
| Status | PRD/A |
| Elec. spec. | 35WGG965 |
| Layout | 35LYEE436 |
| Eff. date | 11-22-2024 |
| CD Diagram | CD0006B03 |
| Poles | 04 |
| Leads | 3#14 13" LONG LEADS Y |
| Proprietary | False |
| Created date | 04-16-2024 |

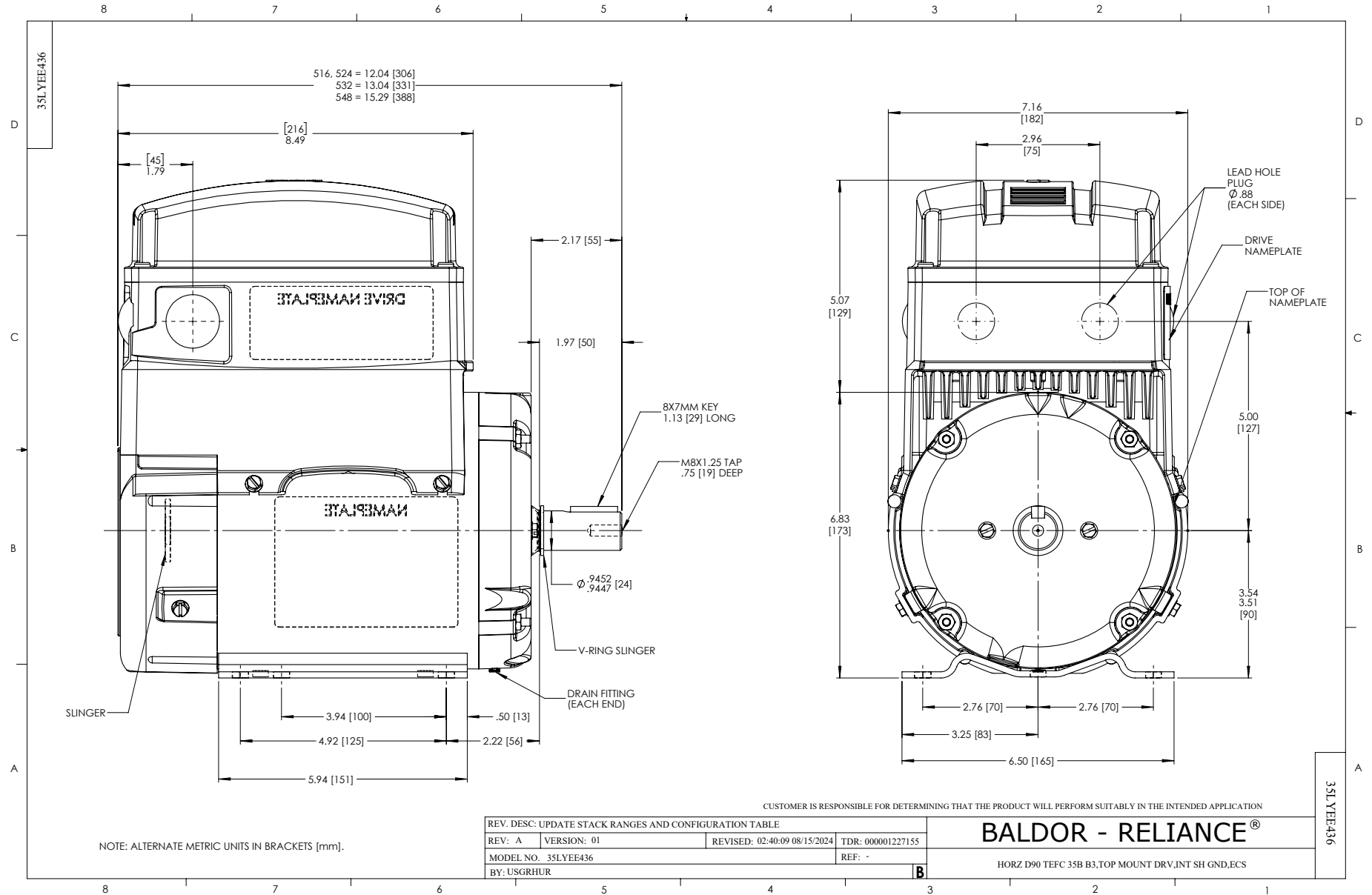
| | |
|--------------------------------------|---------------------|
| Insulation Class | F |
| Inverter Code | 03 |
| KVA Code | - |
| Lifting Lugs | No Lifting Lugs |
| Locked Bearing Indicator | Locked Bearing |
| Motor Lead Quantity/Wire Size | 3 @ 14 AWG |
| Motor Lead Termination | Flying Leads |
| Motor Standards | IEC |
| Motor Type | 3516B |
| Mounting Arrangement | B3 |
| Number of Poles | 4 |
| Overall Length | 12.04 IN |
| Power Factor | 97 |
| Product Family | General Purpose |
| Pulley Face Code | Standard |
| Rodent Screen | None |
| Service Factor | 1.00 |
| Shaft Diameter | 0.945 IN |
| Shaft Ground Indicator | Shaft Grounding |
| Shaft Rotation | Reversible |
| Speed | 1500 rpm |
| Speed Code | Single Speed |
| Starting Method | Direct on line |
| Thermal Device - Bearing | None |
| Thermal Device - Winding | None |
| Vibration Sensor Indicator | No Vibration Sensor |
| Winding Thermal 1 | None |
| Winding Thermal 2 | None |

Nameplate

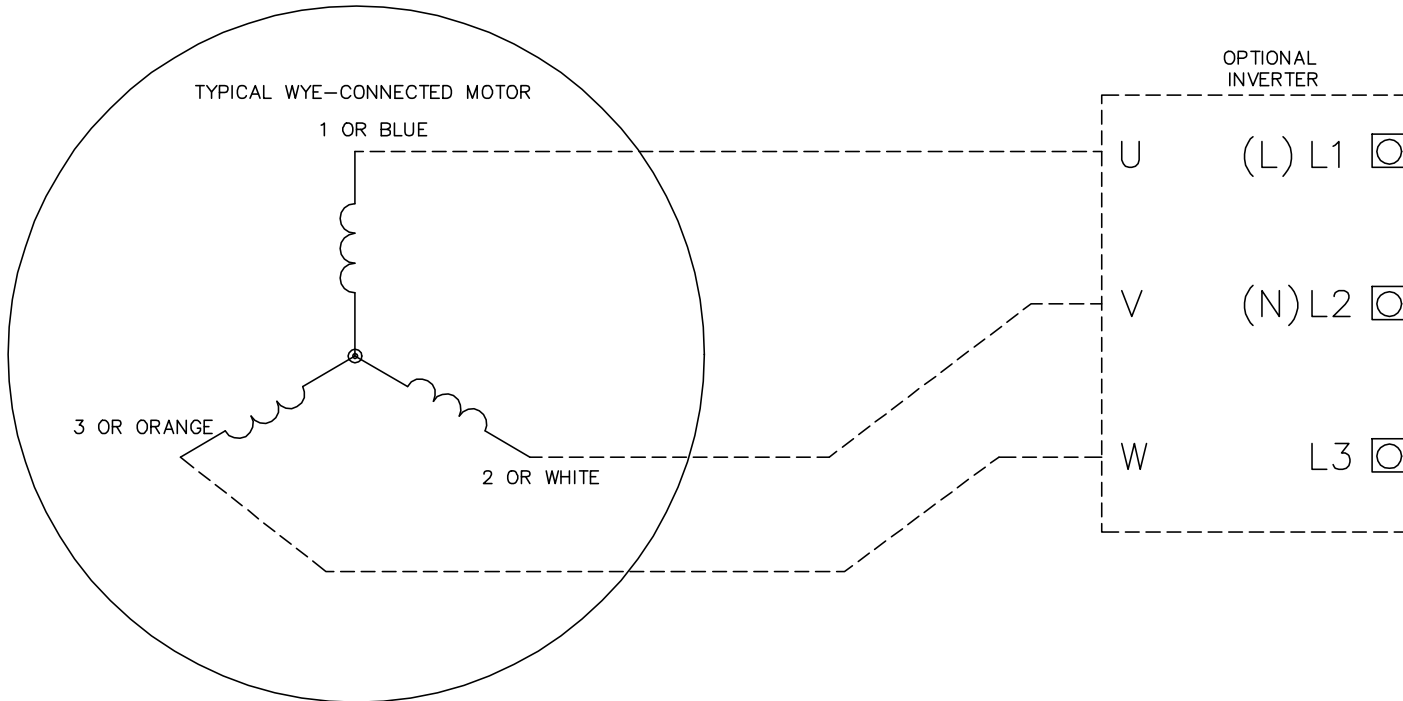
| NP3968B01A01 | | | | | | | | | |
|---------------------|-----------------|-------------------|-----------|------------------|------------|-----------------|------|--|--|
| CAT.NO. | ECS101T3K0P8DF4 | | | | | | | | |
| SPEC. | 35EE436G965 | | | YR | | | | | |
| FRAME | D90S | | IP | 55 | WT. | 36 | | | |
| KW | .75 | HZ | 50 | PH | 3 | DUTY-IPM | CONT | | |
| INS CL | F | CLASS RISE | | | | AMB-C | 40 | | |
| EFF. CL | IE5 | EFF | 89.2 | COSφ | 97 | | | | |
| VOLTS | 380 | FLA | 1.4 | | | | | | |
| 1/MIN | 1500 | | | 1/MIN MAX | 3000 | | | | |
| BEMF (V) | 224 | | | RS (OHMS) | 19.7 | | | | |
| LD (MH) | 117 | | | LQ (MH) | 544 | | | | |
| VPWM | CP = | 50 | TO | 100 | | | | | |
| CT | 5 | TO | 50 | VT | 5 | TO | 50 | | |
| MATCHED INV | ECNI4A2P2 | | | | | | | | |
| DE | 6205 | ODE | 6203 | | | | | | |
| SERIAL # | | | | | | | | | |

NP3978A00

| | | | | | |
|-----------------|-----------|---------------------|---|-----------|-----|
| PART NO. | ECNI4A2P2 | | | | |
| U1 | 400 | PH | 3 | HZ | 50 |
| I1 | 1.8 | W/EXT. CHOKE | | | 1.5 |
| SERIAL # | | | | | |



CD0006B03



NOTES:

1. INTERCHANGE ANY TWO LINE LEADS TO REVERSE ROTATION.
2. ACTUAL NUMBER OF INTERNAL PARALLEL CIRCUITS MAY VARY.

CD0006B03

| | | |
|--|------------------------------|-------------------|
| REV. DESC: CHANGE LEAD COLORS TO BLUE WHITE ORANGE | | |
| REV. LTR: A | VERSION: 01 | TDR: 000001158598 |
| FILE: \AAA\00252\917 | REVISED: 11:01:03 01/19/2021 | BY: ENMARSO |
| MTL: - | © □ | |

BALDOR - RELIANCE®

3PH, 3V, 3 LEADS, WYE CONNECTED, ECS

SH 1 of 1