

BALDOR • RELIANCE

Customer information packet

ECS101T2K1P5DF4

1.5KW, 1500RPM, 3PH, 50HZ, D90S, 3524B, TEFC, B

Class - None

Division - Not Applicable

Specifications

Enclosure	TEFC
Frame	D90S
Frame Material	Steel
Frequency	50.00 Hz
Haz Area Class and Group	None
Haz Area Division	Not Applicable
Motor Letter Type	Brushless Wound Field PM Rotor
Output @ Frequency	1.500 KW @ 50 HZ
Phase	3
Synchronous Speed @ Frequency	1500 RPM @ 50 HZ
Voltage @ Frequency	230.0 V @ 50 HZ
Agency Approvals	CE CULUS UKCA WEEE
Ambient Temperature	40 °C
Auxillary Box	No Auxillary Box
Auxillary Box Lead Termination	None
Base Indicator	Rigid
Bearing Grease Type	Polyrex EM (-20F +300F)
Blower	None
Constant Torque Speed Range	5
Current @ Voltage	3.400 A @ 230.0 V
Design Code	-
Drip Cover	No Drip Cover
Duty Rating	CONT
Efficiency @ 100% Load	90.6 %
Electrically Isolated Bearing	Not Electrically Isolated
Feedback Device	NO FEEDBACK
Frame Prefix	D
Heater Indicator	No Heater
High Voltage Full Load Amps	3.4 a

Part detail

Revision	C
Type	AC
Mech. spec.	35EE436
Base	
Status	PRD/A
Elec. spec.	35WGG964
Layout	35LYEE436
Eff. date	11-22-2024
CD Diagram	CD0006B03
Poles	04
Leads	3#16 13" LONG LEADS Y
Proprietary	False
Created date	04-16-2024

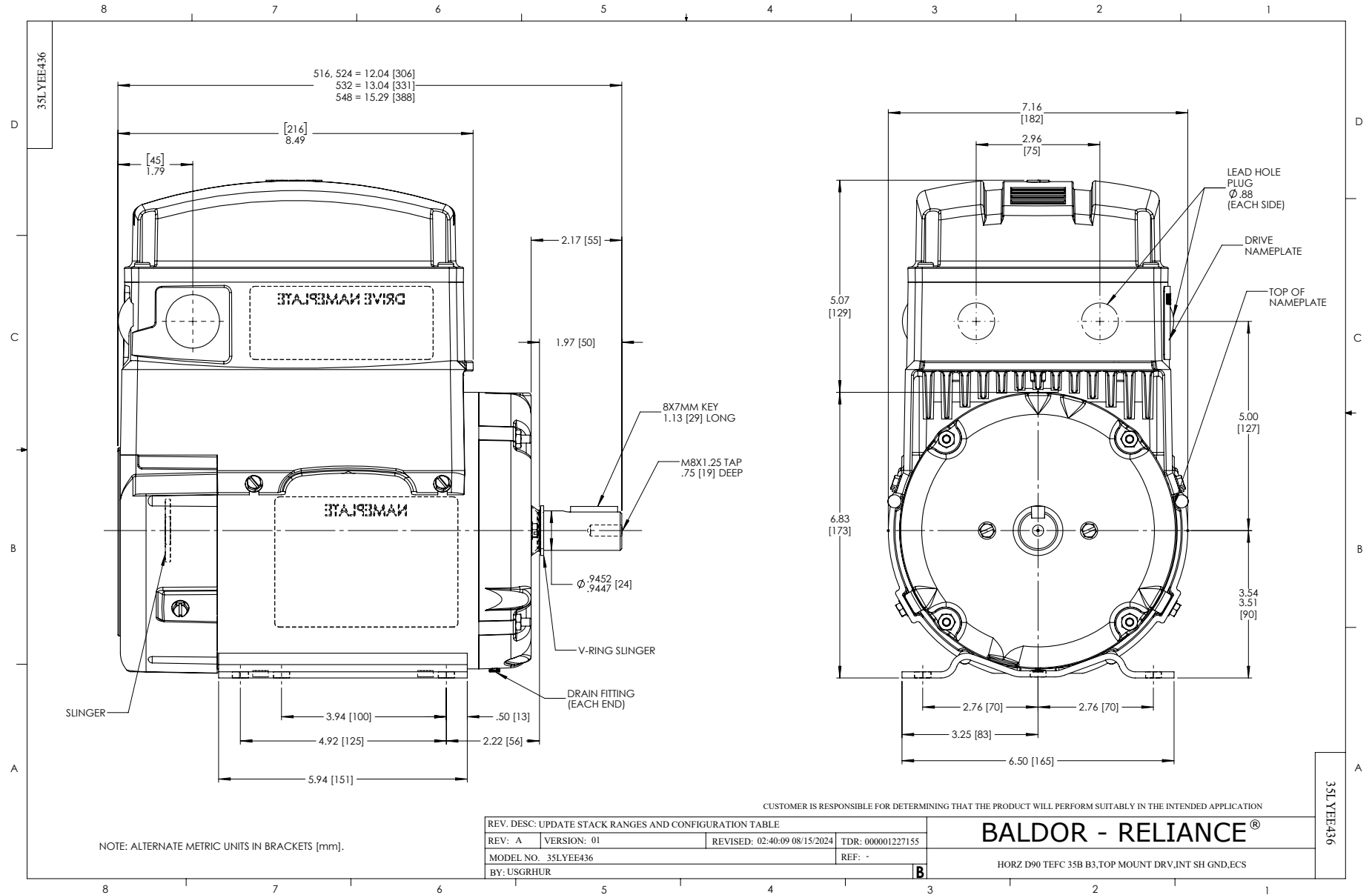
Insulation Class	F
Inverter Code	03
KVA Code	-
Lifting Lugs	No Lifting Lugs
Locked Bearing Indicator	Locked Bearing
Motor Lead Quantity/Wire Size	3 @ 16 AWG
Motor Lead Termination	Flying Leads
Motor Standards	NEMA
Motor Type	3524B
Mounting Arrangement	B3
Number of Poles	4
Overall Length	12.04 IN
Power Factor	93
Product Family	General Purpose
Pulley Face Code	Standard
Rodent Screen	None
Service Factor	1.00
Shaft Diameter	0.945 IN
Shaft Ground Indicator	Shaft Grounding
Shaft Rotation	Reversible
Speed	1500 rpm
Speed Code	Single Speed
Starting Method	Direct on line
Thermal Device - Bearing	None
Thermal Device - Winding	None
Vibration Sensor Indicator	No Vibration Sensor
Winding Thermal 1	None
Winding Thermal 2	None

Nameplate

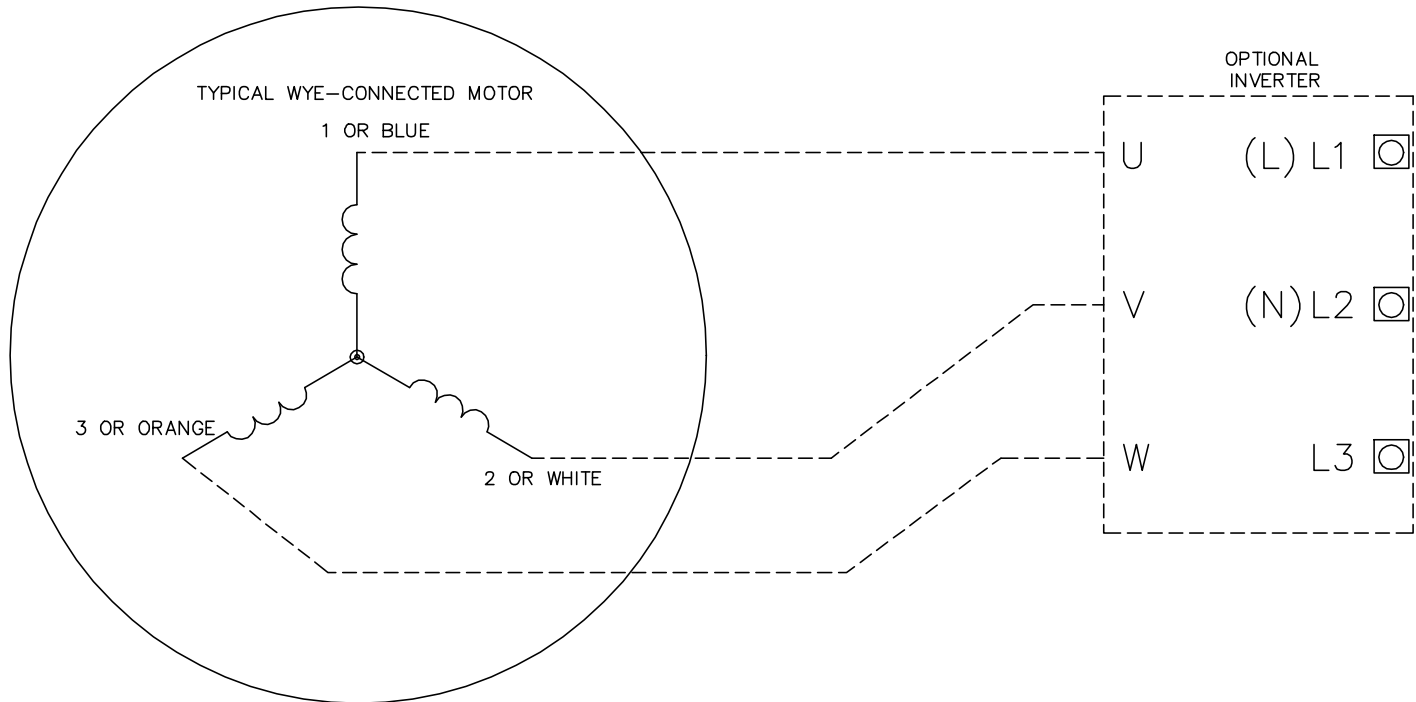
NP3968B01A01									
CAT.NO.	ECS101T2K1P5DF4								
SPEC.	35EE436G964G1			YR					
FRAME	D90S	IP	55	WT.	45				
KW	1.5	HZ	50	PH	3	DUTY-IPM	CONT		
INS CL	F	CLASS RISE		AMB-C		40			
EFF. CL	IE5	EFF	90.6	COS0	93				
VOLTS	230		FLA	3.4					
1/MIN	1500			1/MIN MAX	3000				
BEMF (V)	123			RS (OHMS)	2.94				
LD (MH)	22.1			LQ (MH)	97.1				
VPWM	CP =	50		TO	133				
CT	5	TO	50	VT	5	TO	50		
MATCHED INV	ECIN2A7P0								
DE	6205		ODE	6203					
SERIAL #									

NP3978A00

PART NO.	ECIN2A7P0				
U1	240	PH	3	HZ	50
I1	5.3	W/EXT. CHOKE			5.1
SERIAL #					



CD0006B03



NOTES:

1. INTERCHANGE ANY TWO LINE LEADS TO REVERSE ROTATION.
2. ACTUAL NUMBER OF INTERNAL PARALLEL CIRCUITS MAY VARY.

CD0006B03

REV. DESC: CHANGE LEAD COLORS TO BLUE WHITE ORANGE		
REV. LTR: A	VERSION: 01	TDR: 000001158598
FILE: \AAA\00252\917	REVISED: 11:01:03 01/19/2021	BY: ENMARSO
MTL: -	© □	

BALDOR - RELIANCE®

3PH, SV, 3 LEADS, WYE CONNECTED, ECS

SH 1 of 1