

# ABB BALDOR RELIANCE III

---

## Customer information packet

ECS101M0K5P5FF4

5.5KW, 1500RPM, 3PH, 50HZ, D132M, 3730B, TEFC

Class - None

Division - Not Applicable

**Specifications**

<b>Enclosure</b>	TEFC
<b>Frame</b>	D132M
<b>Frame Material</b>	Steel
<b>Frequency</b>	50.00 Hz
<b>Haz Area Class and Group</b>	None
<b>Haz Area Division</b>	Not Applicable
<b>Motor Letter Type</b>	Three Phase
<b>Output @ Frequency</b>	5.500 KW @ 50 HZ
<b>Phase</b>	3
<b>Synchronous Speed @ Frequency</b>	1500 RPM @ 50 HZ
<b>Voltage @ Frequency</b>	190.0 V @ 50 HZ 380.0 V @ 50 HZ
<b>Agency Approvals</b>	CE CULUS WEEE
<b>Ambient Temperature</b>	40 °C
<b>Auxiliary Box</b>	NO AUXILLARY BOX
<b>Auxiliary Box Lead Termination</b>	None
<b>Base Indicator</b>	Rigid
<b>Bearing Grease Type</b>	Polyrex EM (-20F +300F)
<b>Blower</b>	None
<b>Constant Torque Speed Range</b>	5
<b>Current @ Voltage</b>	10.500 A @ 380.0 V 21.000 A @ 190.0 V
<b>Design Code</b>	B
<b>Drip Cover</b>	No Drip Cover
<b>Duty Rating</b>	S1
<b>Efficiency @ 100% Load</b>	92.7 %
<b>Electrically Isolated Bearing</b>	Not Electrically Isolated
<b>Feedback Device</b>	NO FEEDBACK
<b>Frame Prefix</b>	D
<b>Heater Indicator</b>	No Heater

**Part Detail**

<b>Revision</b>	J
<b>Type</b>	AC
<b>Mech. spec.</b>	
<b>Base</b>	
<b>Status</b>	PRD/A
<b>Elec. spec.</b>	37WGA0016
<b>Layout</b>	37LY-000-407
<b>Eff. date</b>	02-12-2026
<b>CD Diagram</b>	CD0005A25
<b>Poles</b>	04
<b>Leads</b>	9#12
<b>Proprietary</b>	False
<b>Created date</b>	10-18-2022

High Voltage Full Load Amps	10.5 a
Insulation Class	F
Inverter Code	Inverter Duty
Lifting Lugs	Standard Lifting Lugs
Locked Bearing Indicator	No Locked Bearing
Motor Lead Termination	Flying Leads
Motor Standards	IEC
Motor Type	3730B
Mounting Arrangement	B14
Number of Poles	4
Overall Length	17.62 IN
Power Factor	90
Product Family	General Purpose
Pulley Face Code	Standard
Rodent Screen	None
Service Factor	1.00
Shaft Diameter	1.497 IN
Shaft Ground Indicator	Shaft Grounding
Shaft Rotation	Reversible
Speed	1500 rpm
Speed Code	Single Speed
Starting Method	Direct on line
Thermal Device - Bearing	None
Thermal Device - Winding	None
Vibration Sensor Indicator	No Vibration Sensor
Winding Thermal 1	None
Winding Thermal 2	None

**Nameplate**

<b>NP3968B01A01</b>									
<b>CAT.NO.</b>	ECS101MOK5P5FF4								
<b>SPEC.</b>	37-0000-0483			<b>YR</b>					
<b>FRAME</b>	D132S		<b>IP</b>	55	<b>WT.</b>	57			
<b>KW</b>	5.5	<b>HZ</b>	50	<b>PH</b>	3	<b>DUTY-IPM</b>	S1		
<b>INS CL</b>	F	<b>CLASS RISE</b>		B	<b>AMB-C</b>		40		
<b>EFF. CL</b>	IE5	<b>EFF</b>	92.7	<b>COSφ</b>		90			
<b>VOLTS</b>	190/380		<b>FLA</b>	21.85/10.92					
<b>1/MIN</b>	1500			<b>1/MIN MAX</b>	3000				
<b>BEMF (V)</b>	94/188			<b>RS (OHMS)</b>	0.35/1.39				
<b>LD (MH)</b>	6.99/28.09			<b>LQ (MH)</b>	20.19/80.59				
<b>VPWM</b>	<b>CP =</b>	50	<b>TO</b>	100					
<b>CT</b>	5	<b>TO</b>	50	<b>VT</b>	1	<b>TO</b>	50		
<b>MATCHED INV</b>									
<b>DE</b>	6208	<b>ODE</b>	6206						
<b>SERIAL #</b>									

Volts	190/380	Max RPM	3000	Conn Diag.	CD0005A25	Leads	9
Amps	21.85/10.92	Max Amps		Cs Diagram	CS0576	BEMF	0
KW	5.5	VFD#	ACS380-040S-12			LD	0
RPM	1500	S.F.	1.00			LQ	0
Phase/Hz	3/50	Rating	40C AMB-S1			Rs	1.3847 Meas. L-L

**60034-2-3 Motor Performance at Standardized Operating Points**

	RPM	% Speed	LB-FT	% Torque	KW	Efficiency	Loss (% FL)	Watts Loss (W)
P1	1350	90%	25.8	100%	6.6	92.1	7.71%	424
P2	750	50%	25.8	100%	3.7	88.9	6.27%	345
P3	375	25%	25.8	100%	1.8	82.5	5.33%	293
P4	1350	90%	12.9	50%	3.3	92.8	3.51%	193
P5	750	50%	12.9	50%	1.8	90.6	2.60%	143
P6	750	50%	6.5	25%	0.9	90.3	1.35%	74
P7	375	25%	6.5	25%	0.5	86.9	0.94%	52

**61800-9-2 PDS Performance at Reference Operating Points**

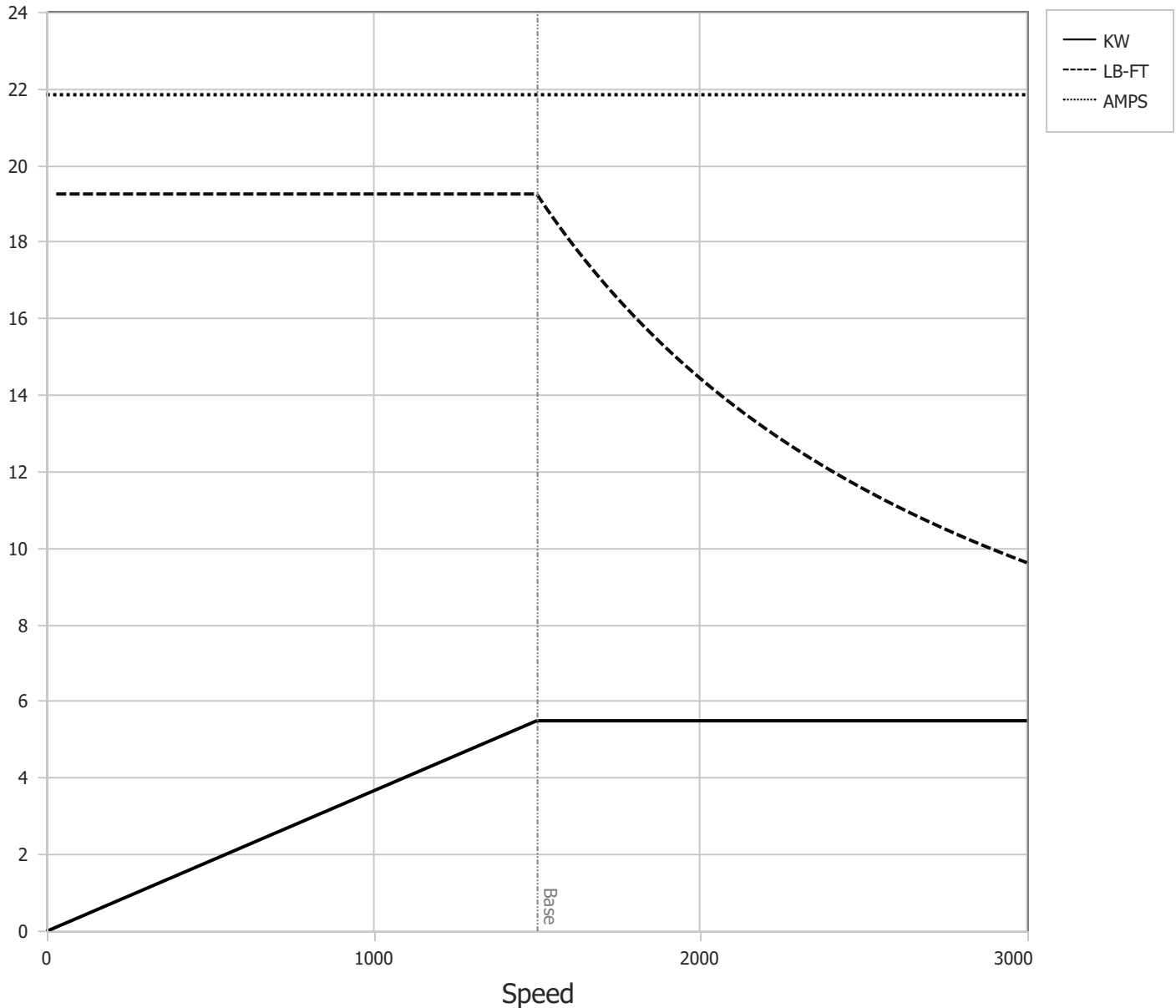
	RPM	% Speed	LB-FT	% Torque	KW	System Efficiency	Loss (% FL)	Watts Loss (W)
P1	1500	100%	25.8	100%	7.4	91.0	9.91%	545
P2	750	50%	25.8	100%	3.7	85.9	8.19%	451
P3	255	17%	25.8	100%	1.3	71.6	6.75%	371
P4	1500	100%	12.9	50%	3.7	90.8	5.05%	278
P5	750	50%	12.9	50%	1.8	87.2	3.67%	202
P6	255	17%	12.9	50%	0.6	74.7	2.87%	158
P7	750	50%	6.5	25%	0.9	85.8	2.06%	114
P8	255	17%	6.5	25%	0.3	73.8	1.51%	83

Points not taken in certified order.

<b>BALDOR • RELIANCE</b>	DR By:	<u>R &amp; D</u>	<b>AC MOTOR PERFORMANCE CURVES</b>	<b>37WGA0016</b> 37-0000-0483 Test - 111886
	CK By:	<u>USGAHIL</u>		
	APP By:	<u>USJAROB1</u>		
	Date:	<u>02/04/2025</u>		

Volts	190/380	Max RPM	3000	Conn Diag.	CD0005A25	Leads	9
Amps	21.85/10.92	Max Amps		Cs Diagram	CS0576	BEMF	0
KW	5.5	VFD #	ACS380-040S-12			LD	0
RPM	1500	S.F.	1.00			LQ	0
Phase/Hz	3/50	Rating	40C AMB-S1			Rs	1.3847 Meas L-L

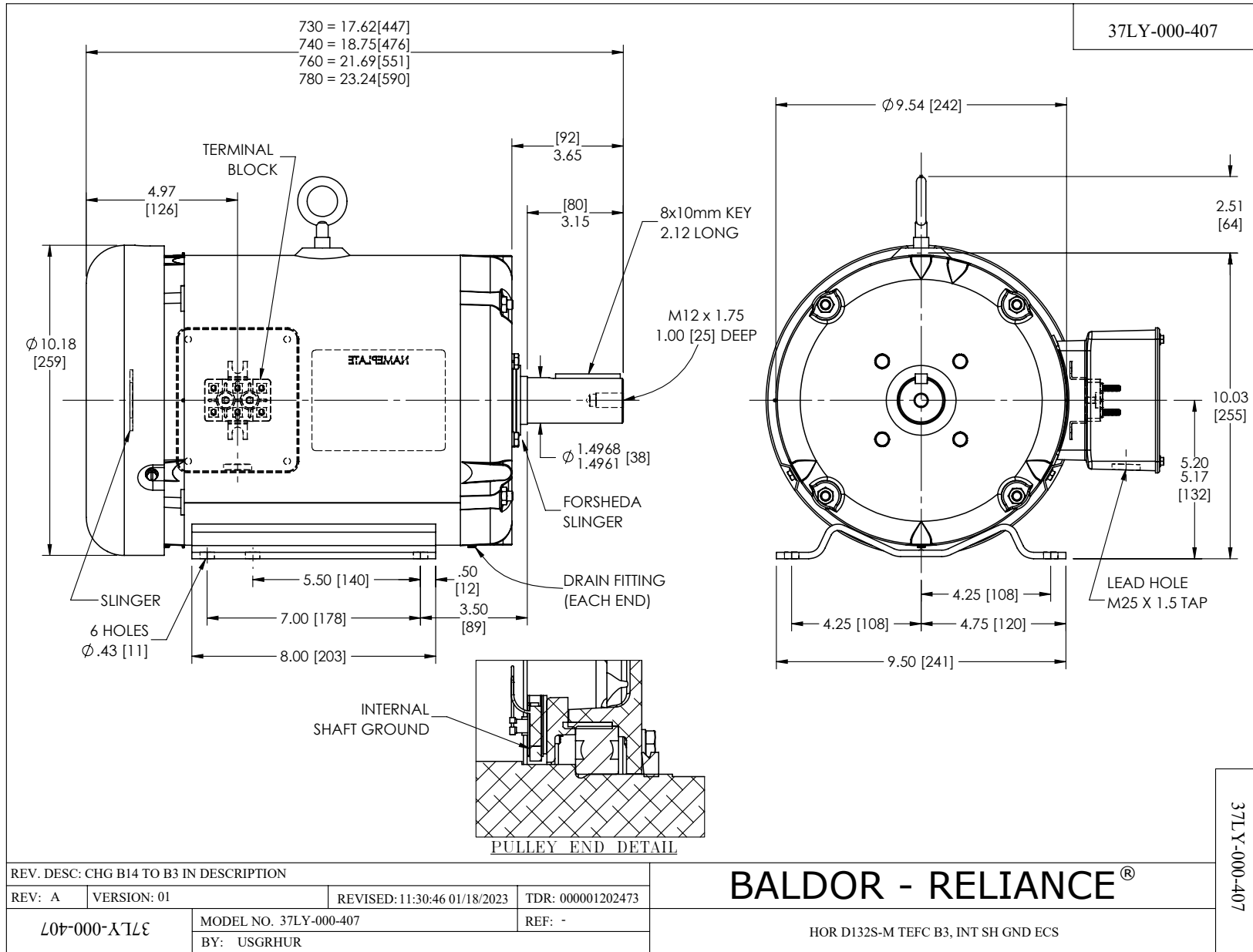
Constant Duty Operating Range



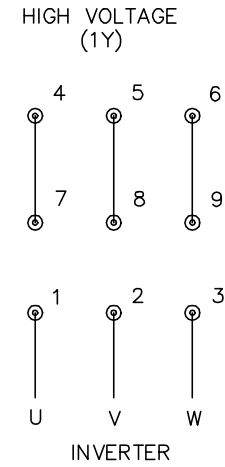
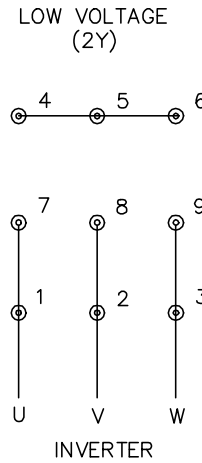
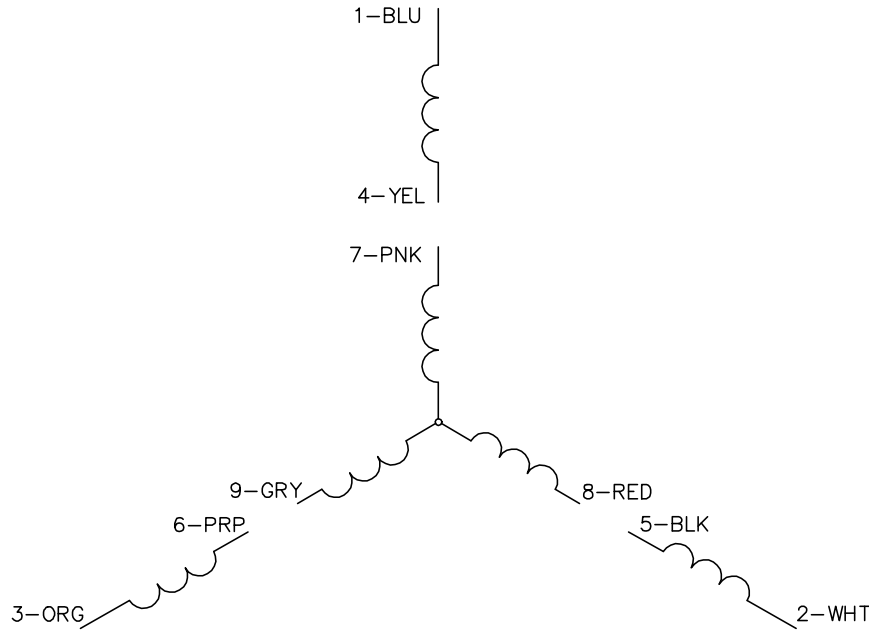
DR By: R & D  
 CK By: USGAHIL  
 APP By: USJAROB1  
 Date: 02/04/2025

**AC MOTOR  
PERFORMANCE  
CURVES**

**37WGA0016**  
 37-0000-0483  
 Test - 111886



CD0005A25



NOTES:

1. INTERCHANGE ANY TWO LINE LEADS TO REVERSE ROTATION.
2. ACTUAL NUMBER OF INTERNAL PARALLEL CIRCUITS MAY BE A MULTIPLE OF THOSE SHOWN ABOVE.
3. LEAD COLORS ARE OPTIONAL. LEADS MUST ALWAYS BE NUMBERED AS SHOWN.

CD0005A25

REV. DESC: NEW		
REV. LTR: -	VERSION: 00	TDR: 000001135746
FILE: \AAA\00253\082	REVISED: 01:10:57 03/30/2020	BY: ENMARSO
MTL: -	© □	

**BALDOR - RELIANCE®**

3PH, DV, 9 LEADS, ECS  
SH 1 of 1