

BALDOR • RELIANCE

Customer information packet

ECS101M0K2P2ED4

2.2KW, 1500RPM, 3PH, 50HZ, D112D, 3624B, TEFC

Class - None

Division - Not Applicable

Specifications

Enclosure	TEFC
Frame	D112D
Frame Material	Steel
Frequency	50.00 Hz
Haz Area Class and Group	None
Haz Area Division	Not Applicable
Motor Letter Type	Brushless Wound Field PM Rotor
Output @ Frequency	2.200 KW @ 50 HZ
Phase	3
Synchronous Speed @ Frequency	1500 RPM @ 50 HZ
Voltage @ Frequency	190.0 V @ 50 HZ 380.0 V @ 50 HZ
Agency Approvals	CE WEEE UKCA CULUS
Ambient Temperature	40 °C
Auxillary Box	No Auxillary Box
Auxillary Box Lead Termination	None
Base Indicator	No Mounting
Bearing Grease Type	Polyrex EM (-20F +300F)
Blower	None
Constant Torque Speed Range	5
Current @ Voltage	4.300 A @ 380.0 V 8.600 A @ 190.0 V
Design Code	B
Drip Cover	No Drip Cover
Duty Rating	S1
Efficiency @ 100% Load	91.5 %
Electrically Isolated Bearing	Not Electrically Isolated
Feedback Device	NO FEEDBACK
Frame Prefix	D

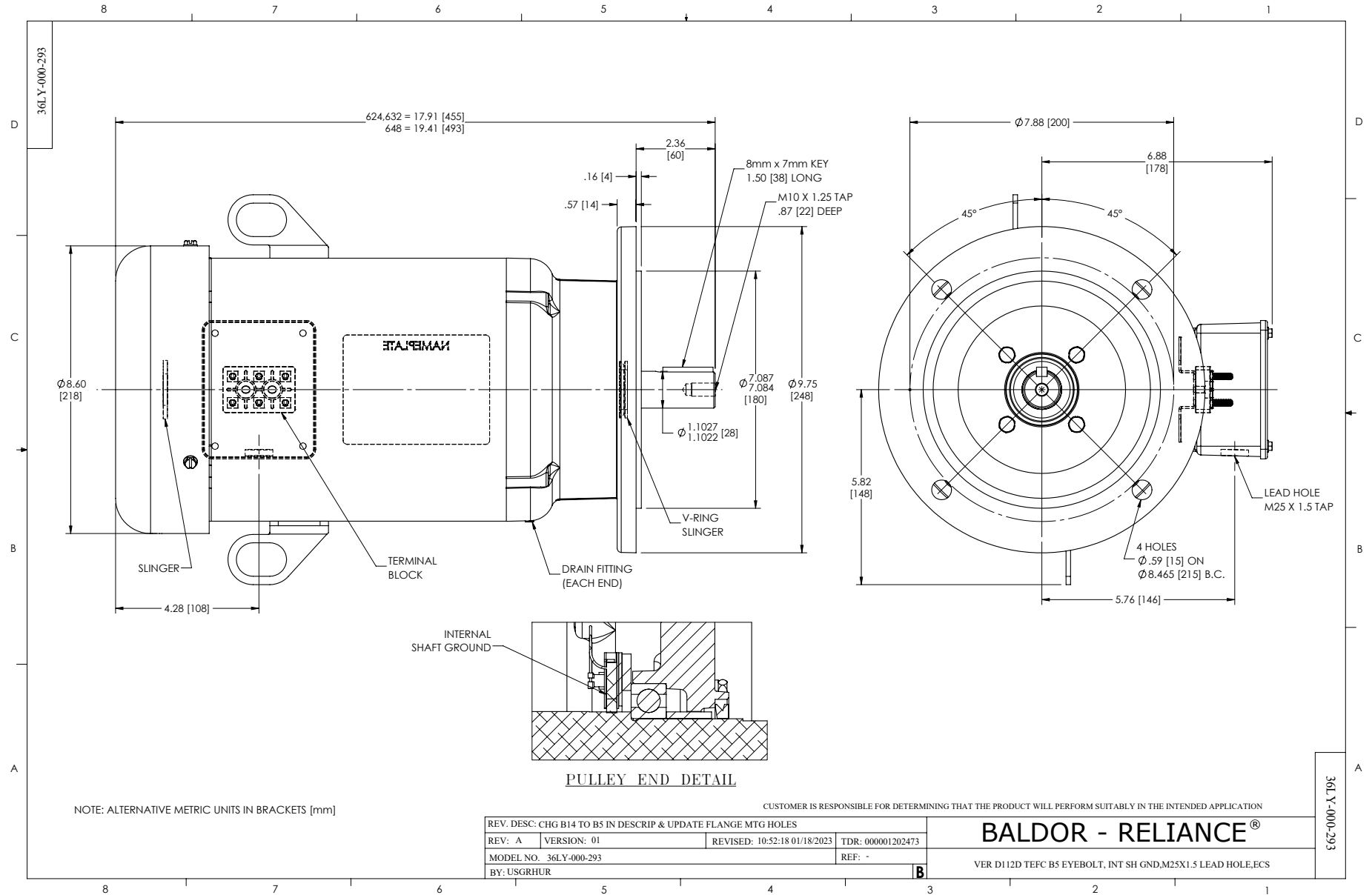
Part detail

Revision	D
Type	AC
Mech. spec.	
Base	
Status	PRD/A
Elec. spec.	36WGA0019
Layout	36LY-000-293
Eff. date	05-08-2024
CD Diagram	CD0005A25
Poles	04
Leads	9#14
Proprietary	False
Created date	01-11-2023

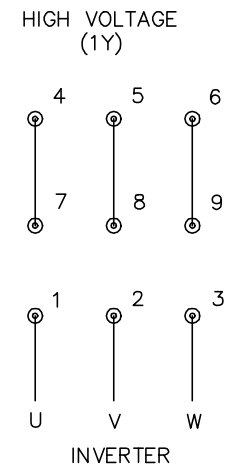
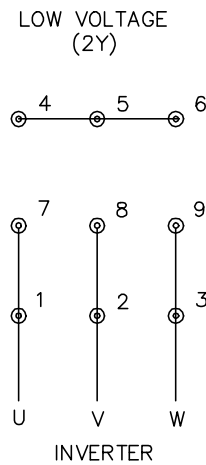
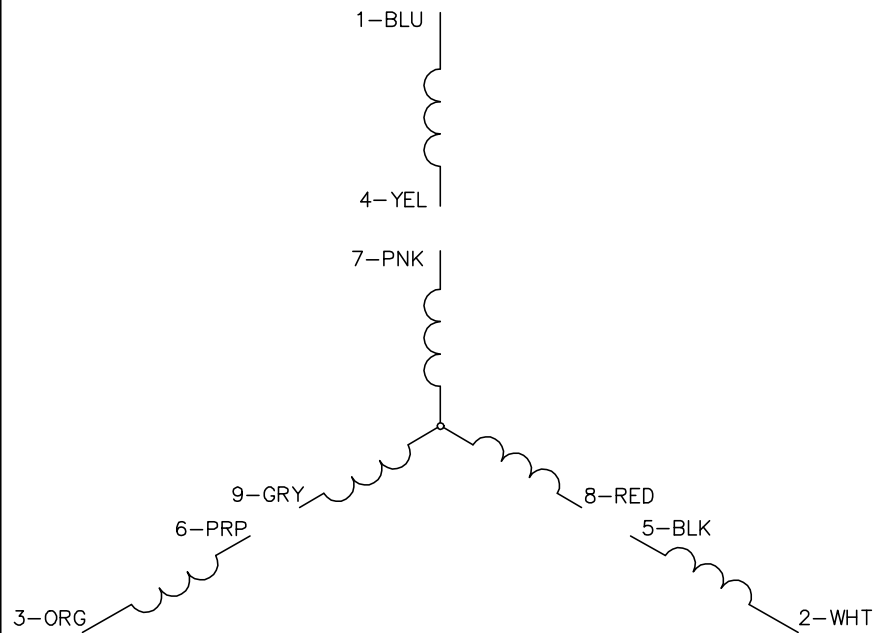
Heater Indicator	No Heater
High Voltage Full Load Amps	4.3 a
Insulation Class	F
Inverter Code	Inverter Duty
Lifting Lugs	Standard Lifting Lugs
Locked Bearing Indicator	Locked Bearing
Motor Lead Termination	Terminal Block
Motor Standards	IEC
Motor Type	3624B
Mounting Arrangement	B5
Number of Poles	4
Overall Length	17.91 IN
Power Factor	97
Product Family	General Purpose
Pulley Face Code	D-Flange
Rodent Screen	None
Service Factor	1.00
Shaft Diameter	1.103 IN
Shaft Ground Indicator	Shaft Grounding
Shaft Rotation	Reversible
Speed	1500 rpm
Speed Code	Single Speed
Starting Method	INVERTER SPECIAL
Thermal Device - Bearing	None
Thermal Device - Winding	None
Vibration Sensor Indicator	No Vibration Sensor
Winding Thermal 1	None
Winding Thermal 2	None

Nameplate

NP3968B01A01									
CAT.NO.	ECS101MOK2P2ED4								
SPEC.	36-0000-3645			YR					
FRAME	D112D	IP	55	WT.	84				
KW	2.2	HZ	50	PH	3	DUTY-IPM	S1		
INS CL	F	CLASS RISE		AMB-C		40			
EFF. CL	IE5	EFF	91.5	COS0		97			
VOLTS	190/380		FLA	8.6/4.3					
1/MIN	1500			1/MIN MAX	3000				
BEMF (V)	88/176			RS (OHMS)	0.97/3.88				
LD (MH)	14.4/57.7			LQ (MH)	54.4/217.7				
VPWM	CP =	50	TO	100					
CT	5	TO	50	VT	1	TO	50		
MATCHED INV	ACS380-04XX-12A2-1 / 07A2-4								
DE	6206		ODE	6205					
SERIAL #									



CD0005A25



NOTES:

1. INTERCHANGE ANY TWO LINE LEADS TO REVERSE ROTATION.
2. ACTUAL NUMBER OF INTERNAL PARALLEL CIRCUITS MAY BE A MULTIPLE OF THOSE SHOWN ABOVE.
3. LEAD COLORS ARE OPTIONAL. LEADS MUST ALWAYS BE NUMBERED AS SHOWN.

CD0005A25

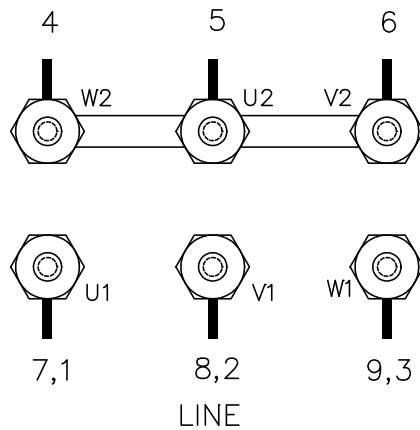
REV. DESC: NEW		
REV. LTR: -	VERSION: 00	TDR: 000001135746
FILE: \AAA\00253\082	REVISED: 01:10:57 03/30/2020	BY: ENMARSO
MTL: -	© □	

BALDOR - RELIANCE®

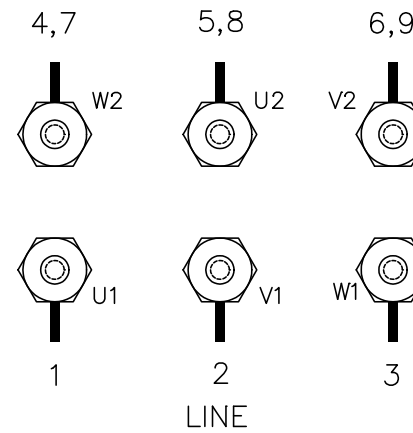
3PH, DV, 9 LEADS, ECS
SH 1 of 1

SP0032

LOW VOLT CONNECTION



HIGH VOLT CONNECTION



TO REVERSE ROTATION
INTERCHANGE ANY TWO
LINE LEADS.

SP0032

MATL:			
REV:	A	ADD CONN LABEL REF TO DESC	
SP0032		SCALE: -	BY: JLP
		FILE: AAA00029378	REVISED: 12/17/96
		TDR: 0111436	

BALDOR ELECTRIC Co.

THREE PHASE, DUAL VOLTAGE, TERMINAL BLOCK, CD0005/LC0005C01