

**BALDOR • RELIANCE**

---

# Customer information packet

## ECS101M0K2P2DC4

2.2KW, 1800RPM, 3PH, 50HZ, D90C, 3532B, TEFC, B

Class - None

Division - Not Applicable

## Specifications

|                                |  |
|--------------------------------|--|
| Enclosure                      | TEFC                                   |
| Frame                          | D90C                                   |
| Frame Material                 | Steel                                  |
| Frequency                      | 50.00 Hz                               |
| Haz Area Class and Group       | None                                   |
| Haz Area Division              | Not Applicable                         |
| Motor Letter Type              | Brushless Wound Field PM Rotor         |
| Output @ Frequency             | 2.200 KW @ 50 HZ                       |
| Phase                          | 3                                      |
| Synchronous Speed @ Frequency  | 1800 RPM @ 50 HZ                       |
| Voltage @ Frequency            | 380.0 V @ 50 HZ<br>190.0 V @ 50 HZ     |
| Agency Approvals               | CE<br>CULUS<br>UKCA<br>WEEE            |
| Ambient Temperature            | 40 °C                                  |
| Auxillary Box                  | No Auxillary Box                       |
| Auxillary Box Lead Termination | None                                   |
| Base Indicator                 | No Mounting                            |
| Bearing Grease Type            | Polyrex EM (-20F +300F)                |
| Blower                         | None                                   |
| Constant Torque Speed Range    | 5                                      |
| Current @ Voltage              | 7.100 A @ 190.0 V<br>3.550 A @ 380.0 V |
| Design Code                    | -                                      |
| Drip Cover                     | No Drip Cover                          |
| Duty Rating                    | CONT                                   |
| Efficiency @ 100% Load         | 91.8 %                                 |
| Electrically Isolated Bearing  | Not Electrically Isolated              |
| Feedback Device                | NO FEEDBACK                            |
| Frame Prefix                   | D                                      |

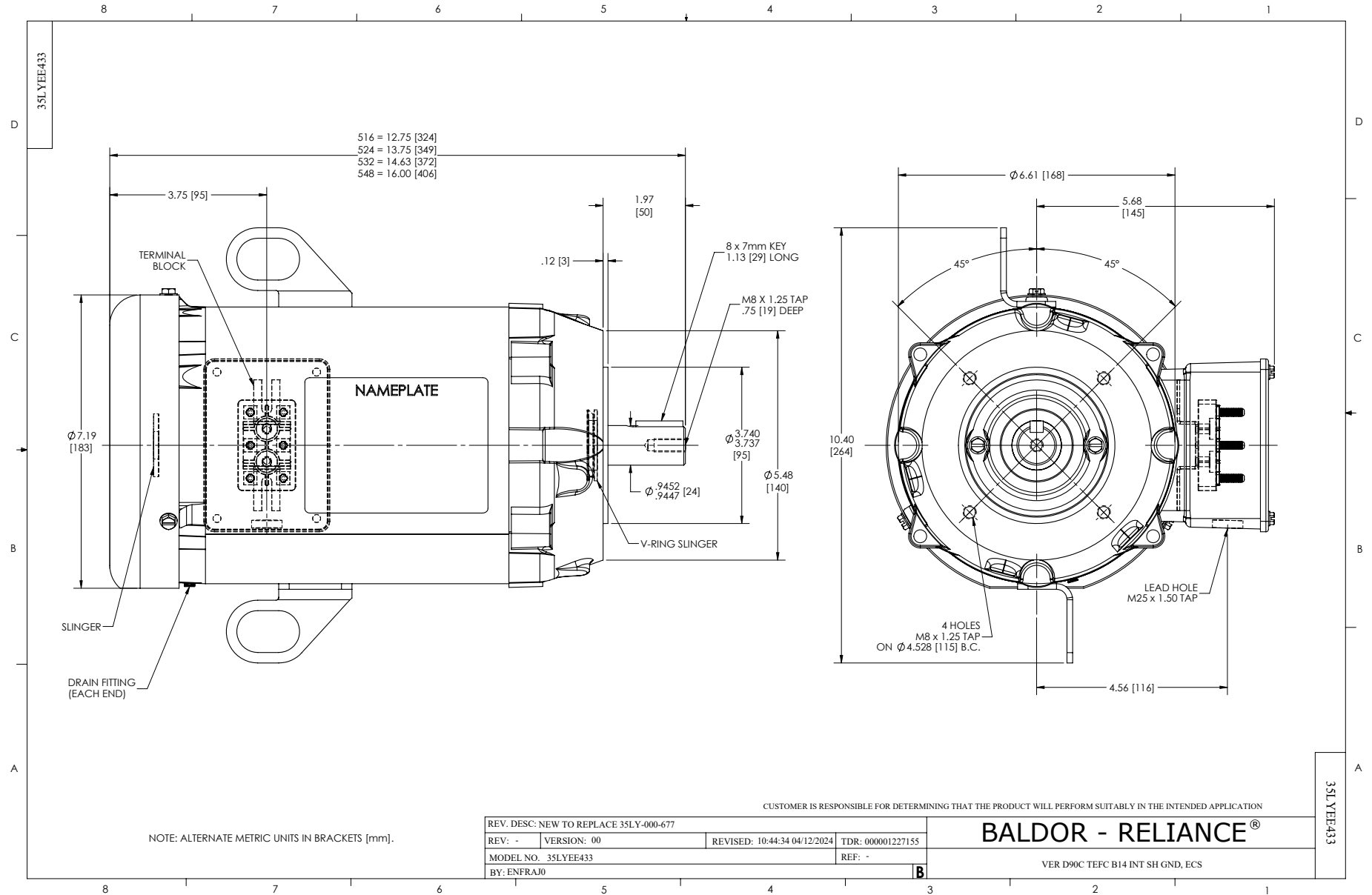
## Part detail

|              |            |
|--------------|------------|
| Revision     | A          |
| Type         | AC         |
| Mech. spec.  | 35EE433    |
| Base         |            |
| Status       | PRD/A      |
| Elec. spec.  | 35WGG984   |
| Layout       | 35LYEE433  |
| Eff. date    | 07-31-2024 |
| CD Diagram   | CD0005A25  |
| Poles        | 04         |
| Leads        | 9#16       |
| Proprietary  | False      |
| Created date | 03-21-2024 |

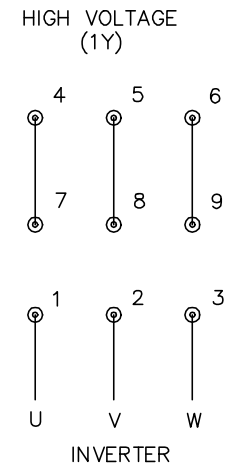
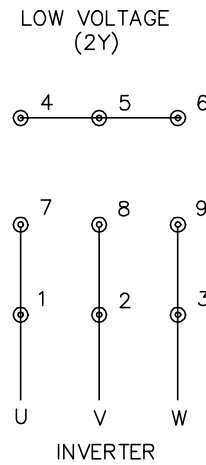
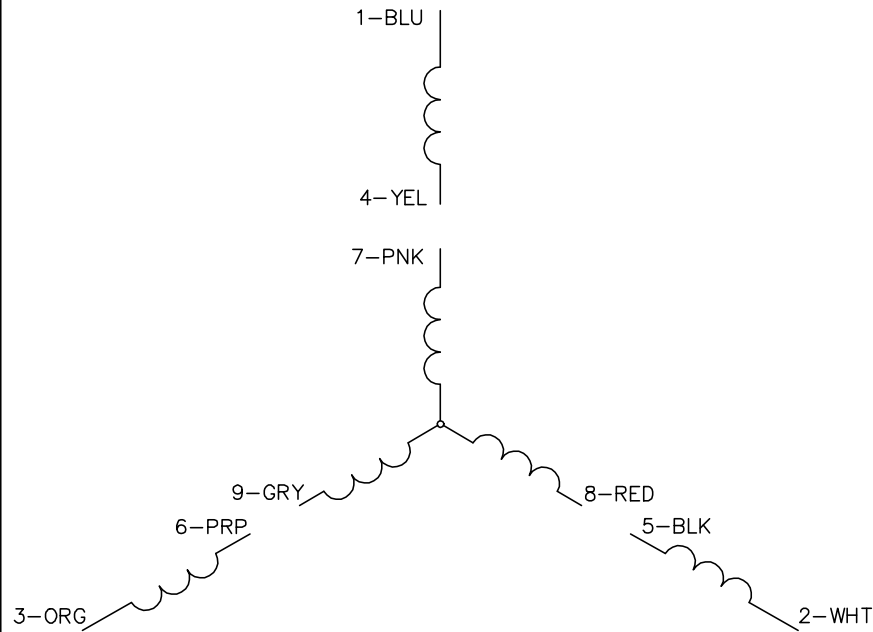
|                               |                     |
|-------------------------------|---------------------|
| Heater Indicator              | No Heater           |
| High Voltage Full Load Amps   | 3.6 a               |
| Insulation Class              | F                   |
| Inverter Code                 | Inverter Duty       |
| KVA Code                      | -                   |
| Lifting Lugs                  | No Lifting Lugs     |
| Locked Bearing Indicator      | Locked Bearing      |
| Motor Lead Quantity/Wire Size | 9 @ 116 AWG         |
| Motor Lead Termination        | Terminal Block      |
| Motor Standards               | IEC                 |
| Motor Type                    | 3532B               |
| Mounting Arrangement          | B14                 |
| Number of Poles               | 4                   |
| Overall Length                | 14.63 IN            |
| Power Factor                  | 99                  |
| Product Family                | General Purpose     |
| Pulley Face Code              | C-Face              |
| Rodent Screen                 | None                |
| RoHS Status                   | Y                   |
| Service Factor                | 1.15                |
| Shaft Diameter                | 0.945 IN            |
| Shaft Ground Indicator        | Shaft Grounding     |
| Shaft Rotation                | Reversible          |
| Speed                         | 1800 rpm            |
| Speed Code                    | Single Speed        |
| Starting Method               | Direct on line      |
| Thermal Device - Bearing      | None                |
| Thermal Device - Winding      | None                |
| Vibration Sensor Indicator    | No Vibration Sensor |
| Winding Thermal 1             | None                |
| Winding Thermal 2             | None                |

## Nameplate

| NP3968B01A01 |                             |            |      |           |          |          |      |  |  |
|--------------|-----------------------------|------------|------|-----------|----------|----------|------|--|--|
| CAT.NO.      | ECS101M0K2P2DC4             |            |      |           |          |          |      |  |  |
| SPEC.        | 35EE433G984                 |            |      | YR        |          |          |      |  |  |
| FRAME        | D90C                        | IP         | 55   | WT.       | 55       |          |      |  |  |
| KW           | 2.2                         | HZ         | 50   | PH        | 3        | DUTY-IPM | CONT |  |  |
| INS CL       | F                           | CLASS RISE |      | AMB-C     |          | 40       |      |  |  |
| EFF. CL      | IE5                         | EFF        | 91.8 | COSØ      |          | 99       |      |  |  |
| VOLTS        | 190/380                     |            | FLA  | 7.1/3.55  |          |          |      |  |  |
| 1/MIN        | 1800                        |            |      | 1/MIN MAX | 4000     |          |      |  |  |
| BEMF (V)     | 115/229                     |            |      | RS (OHMS) | 7.0      |          |      |  |  |
| LD (MH)      | 13/52                       |            |      | LQ (MH)   | 45.8/183 |          |      |  |  |
| VPWM         | CP =                        | 50         | TO   | 100       |          |          |      |  |  |
| CT           | 5                           | TO         | 50   | VT        | 1        | TO       | 50   |  |  |
| MATCHED INV  | ACS380-04xx-12A7-1 / 06A3-4 |            |      |           |          |          |      |  |  |
| DE           | 6206                        |            | ODE  | 6203      |          |          |      |  |  |
| SERIAL #     |                             |            |      |           |          |          |      |  |  |



CD0005A25



NOTES:

1. INTERCHANGE ANY TWO LINE LEADS TO REVERSE ROTATION.
2. ACTUAL NUMBER OF INTERNAL PARALLEL CIRCUITS MAY BE A MULTIPLE OF THOSE SHOWN ABOVE.
3. LEAD COLORS ARE OPTIONAL. LEADS MUST ALWAYS BE NUMBERED AS SHOWN.

CD0005A25

|                      |                              |                   |
|----------------------|------------------------------|-------------------|
| REV. DESC: NEW       |                              |                   |
| REV. LTR: -          | VERSION: 00                  | TDR: 000001135746 |
| FILE: \AAA\00253\082 | REVISED: 01:10:57 03/30/2020 | BY: ENMARSO       |
| MTL: -               | © □                          |                   |

**BALDOR - RELIANCE®**

3PH, DV, 9 LEADS, ECS  
SH 1 of 1