

# ABB BALDOR RELIANCE III

---

## Customer information packet

ECS101M0K1P5DC4

1.5KW, 1500RPM, 3PH, 50HZ, D90C, 3524B, TEFC, B

Class - None

Division - Not Applicable

**Specifications**

<b>Enclosure</b>	TEFC
<b>Frame</b>	D90C
<b>Frame Material</b>	Steel
<b>Frequency</b>	50.00 Hz
<b>Haz Area Class and Group</b>	None
<b>Haz Area Division</b>	Not Applicable
<b>Motor Letter Type</b>	Brushless Wound Field PM Rotor
<b>Output @ Frequency</b>	1.500 KW @ 50 HZ
<b>Phase</b>	3
<b>Synchronous Speed @ Frequency</b>	1500 RPM @ 50 HZ
<b>Voltage @ Frequency</b>	380.0 V @ 50 HZ 190.0 V @ 50 HZ
<b>Agency Approvals</b>	CE CULUS UKCA WEEE
<b>Ambient Temperature</b>	40 °C
<b>Auxiliary Box</b>	NO AUXILLARY BOX
<b>Auxiliary Box Lead Termination</b>	None
<b>Base Indicator</b>	No Mounting
<b>Bearing Grease Type</b>	Polyrex EM (-20F +300F)
<b>Blower</b>	None
<b>Constant Torque Speed Range</b>	5
<b>Current @ Voltage</b>	5.200 A @ 190.0 V 2.360 A @ 380.0 V
<b>Design Code</b>	B
<b>Drip Cover</b>	No Drip Cover
<b>Duty Rating</b>	CONT
<b>Efficiency @ 100% Load</b>	88.8 %
<b>Electrically Isolated Bearing</b>	Not Electrically Isolated
<b>Feedback Device</b>	NO FEEDBACK
<b>Frame Prefix</b>	D

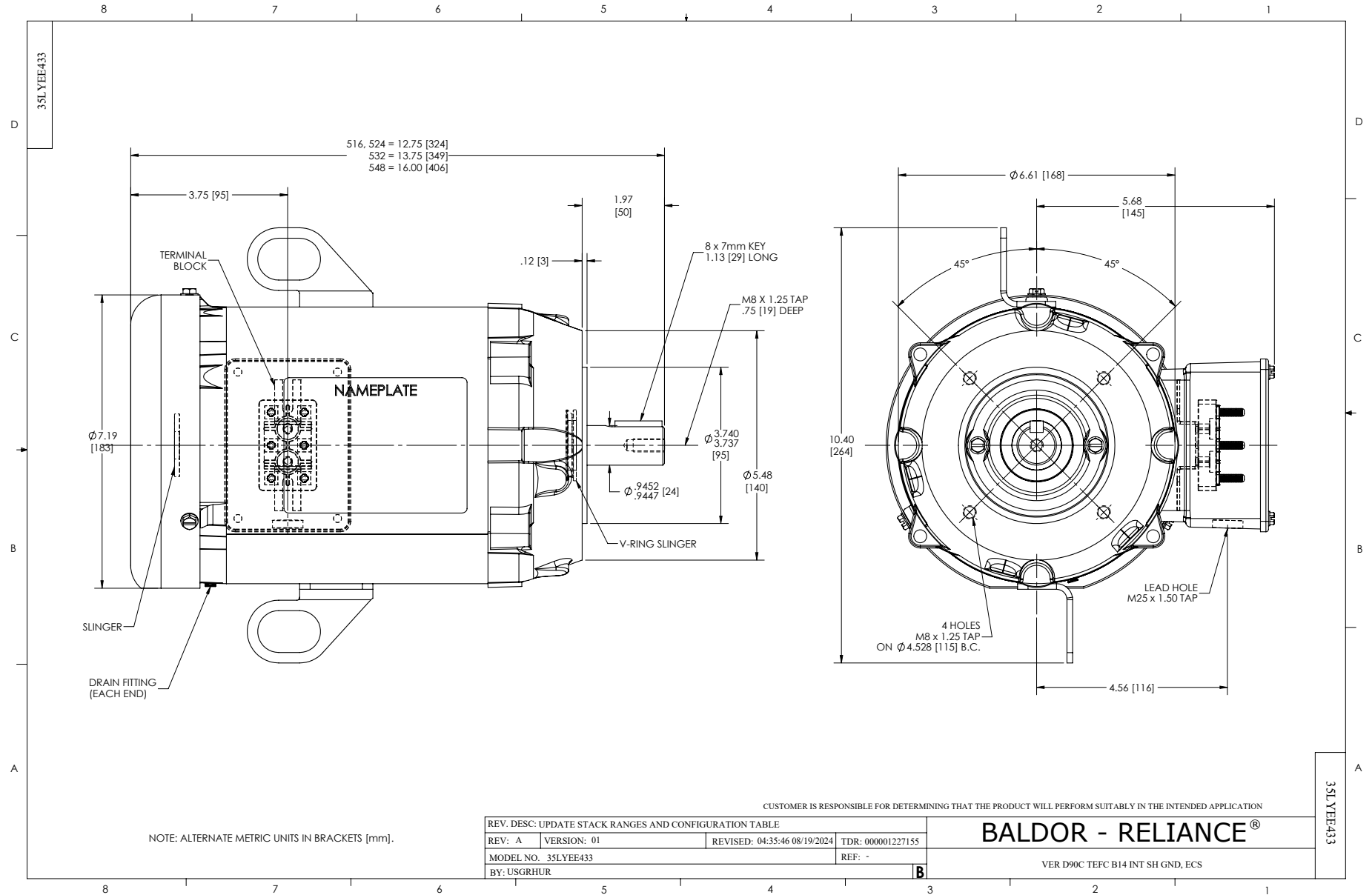
**Part Detail**

<b>Revision</b>	C
<b>Type</b>	AC
<b>Mech. spec.</b>	35EE433
<b>Base</b>	
<b>Status</b>	PRD/A
<b>Elec. spec.</b>	35WGG983
<b>Layout</b>	35LYEE433
<b>Eff. date</b>	02-12-2026
<b>CD Diagram</b>	CD0005A25
<b>Poles</b>	04
<b>Leads</b>	9#16 Y
<b>Proprietary</b>	False
<b>Created date</b>	03-21-2024

<b>Heater Indicator</b>	No Heater
<b>High Voltage Full Load Amps</b>	2.4 a
<b>Insulation Class</b>	F
<b>Inverter Code</b>	Inverter Duty
<b>KVA Code</b>	N
<b>Lifting Lugs</b>	No Lifting Lugs
<b>Locked Bearing Indicator</b>	Locked Bearing
<b>Motor Lead Quantity/Wire Size</b>	9 @ 16 AWG
<b>Motor Lead Termination</b>	Terminal Block
<b>Motor Standards</b>	IEC
<b>Motor Type</b>	3524B
<b>Mounting Arrangement</b>	B14
<b>Number of Poles</b>	4
<b>Overall Length</b>	13.75 IN
<b>Power Factor</b>	99
<b>Product Family</b>	General Purpose
<b>Pulley Face Code</b>	C-Face
<b>Rodent Screen</b>	None
<b>RoHS Status</b>	Y
<b>Service Factor</b>	1.00
<b>Shaft Diameter</b>	0.945 IN
<b>Shaft Ground Indicator</b>	Shaft Grounding
<b>Shaft Rotation</b>	Reversible
<b>Speed</b>	1500 rpm
<b>Speed Code</b>	Single Speed
<b>Starting Method</b>	Direct on line
<b>Thermal Device - Bearing</b>	None
<b>Thermal Device - Winding</b>	None
<b>Vibration Sensor Indicator</b>	No Vibration Sensor
<b>Winding Thermal 1</b>	None
<b>Winding Thermal 2</b>	None

**Nameplate**

<b>NP3968B01A01</b>									
<b>CAT.NO.</b>	ECS101MOK1P5DC4								
<b>SPEC.</b>	35EE433G983			<b>YR</b>					
<b>FRAME</b>	D90C	<b>IP</b>	54	<b>WT.</b>	45				
<b>KW</b>	1.5	<b>HZ</b>	50	<b>PH</b>	3	<b>DUTY-IPM</b>	CONT		
<b>INS CL</b>	F	<b>CLASS RISE</b>			<b>AMB-C</b>	40			
<b>EFF. CL</b>	IE5	<b>EFF</b>	89.5	<b>COSφ</b>	99				
<b>VOLTS</b>	190/380		<b>FLA</b>	5.2/2.36					
<b>1/MIN</b>	1500			<b>1/MIN MAX</b>	4000				
<b>BEMF (V)</b>	121/242			<b>RS (OHMS)</b>	3.05/12.2				
<b>LD (MH)</b>	19.3/77			<b>LQ (MH)</b>	71.5/286				
<b>VPWM</b>	<b>CP =</b>	50		<b>TO</b>	100				
<b>CT</b>	5	<b>TO</b>	50	<b>VT</b>	1	<b>TO</b>	50		
<b>MATCHED INV</b>	ACS380-04XX-06A9-1 / 03A3-4								
<b>DE</b>	6206		<b>ODE</b>	6203					
<b>SERIAL #</b>									

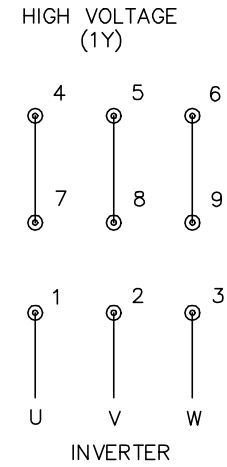
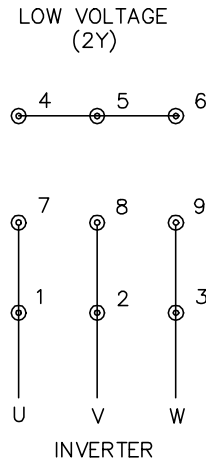
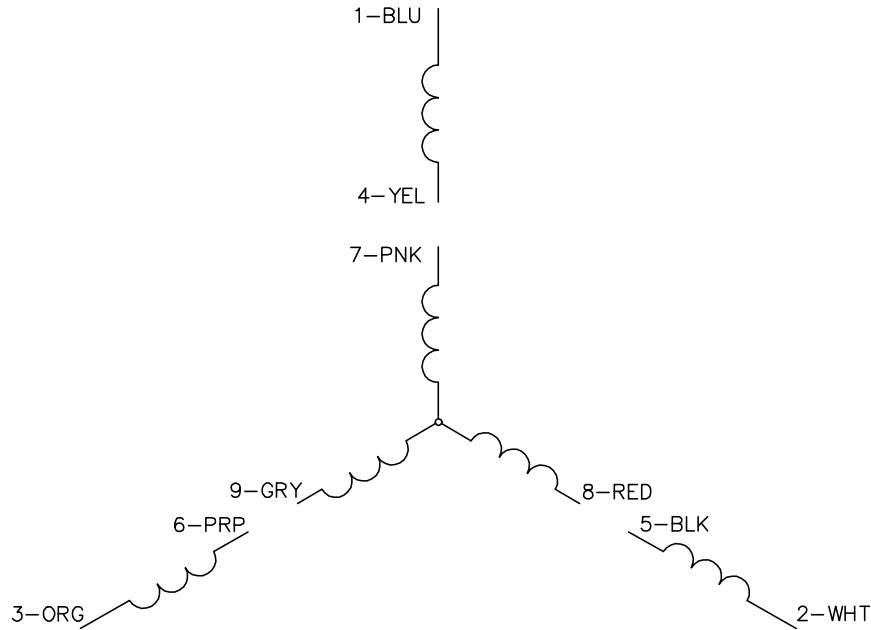


REV. DESC: UPDATE STACK RANGES AND CONFIGURATION TABLE			
REV: A	VERSION: 01	REVISED: 04:35:46 08/19/2024	TDR: 000001227155
MODEL NO. 35LYEE433		REF: -	
BY: USGRHUR			

**BALDOR - RELIANCE®**

VER D90C TEFC B14 INT SH GND, ECS

CD0005A25



NOTES:

1. INTERCHANGE ANY TWO LINE LEADS TO REVERSE ROTATION.
2. ACTUAL NUMBER OF INTERNAL PARALLEL CIRCUITS MAY BE A MULTIPLE OF THOSE SHOWN ABOVE.
3. LEAD COLORS ARE OPTIONAL. LEADS MUST ALWAYS BE NUMBERED AS SHOWN.

CD0005A25

REV. DESC: NEW		
REV. LTR: -	VERSION: 00	TDR: 000001135746
FILE: \AAA\00253\082	REVISED: 01:10:57 03/30/2020	BY: ENMARSO
MTL: -	© □	

**BALDOR - RELIANCE®**

3PH, DV, 9 LEADS, ECS  
SH 1 of 1