

BALDOR • RELIANCE

Customer information packet

ECS101M0H10FF4

10HP, 1800RPM, 3PH, 60HZ, 215T, TEFC, N

Class - None

Division - Not Applicable

Specifications

Enclosure	TEFC
Frame	215T
Frame Material	Steel
Frequency	60.00 Hz
Haz Area Class and Group	None
Haz Area Division	Not Applicable
Motor Letter Type	Three Phase
Phase	3
Agency Approvals	UL WEEE
Auxillary Box	No Auxillary Box
Auxillary Box Lead Termination	None
Base Indicator	Rigid
Bearing Grease Type	Polyrex EM (-20F +300F)
Blower	None
Constant Torque Speed Range	6
Design Code	A
Drip Cover	No Drip Cover
Duty Rating	CONT
Electrically Isolated Bearing	Not Electrically Isolated
Feedback Device	NO FEEDBACK
Front Shaft Indicator	None
Heater Indicator	No Heater
Insulation Class	F
Inverter Code	Inverter Duty
IP Rating	NONE
Lifting Lugs	Standard Lifting Lugs
Locked Bearing Indicator	Locked Bearing
Motor Lead Quantity/Wire Size	9 @ 14 AWG
Motor Lead Termination	Flying Leads
Motor Standards	NEMA
Motor Type	3740B

Part detail

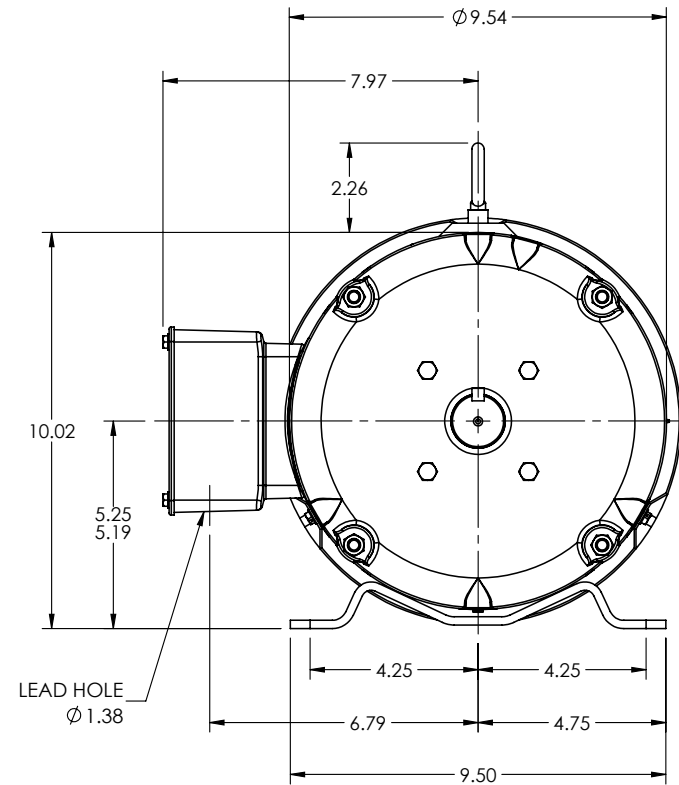
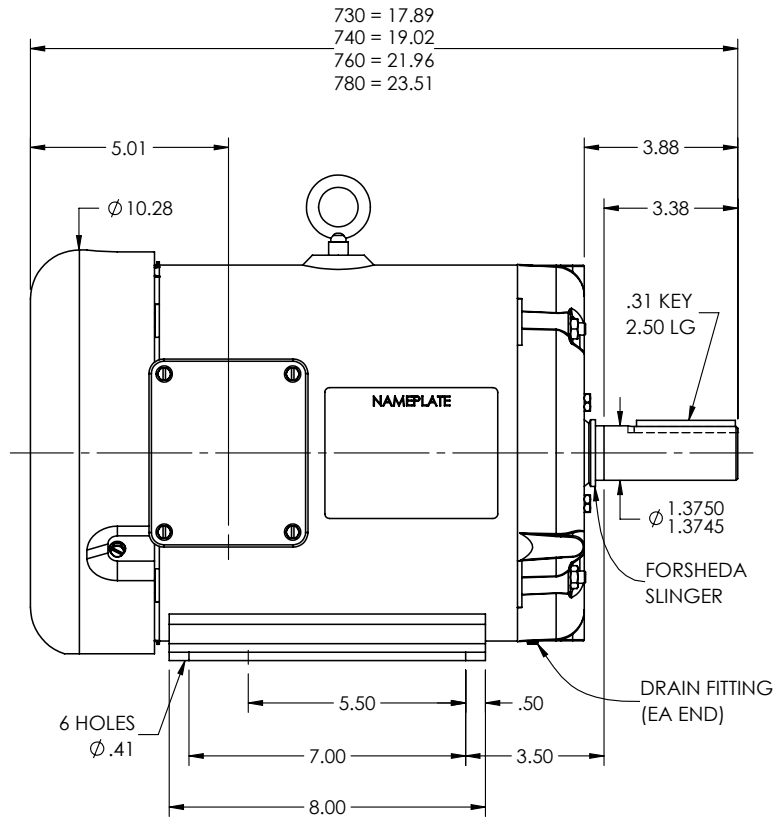
Revision	W
Type	AC
Mech. spec.	37Q435
Base	
Status	PRD/A
Elec. spec.	37WGL001
Layout	37LYQ435
Eff. date	09-19-2024
CD Diagram	CD0005
Poles	04
Leads	9#14 Y
Proprietary	False
Created date	11-27-2018

Mounting Arrangement	F1
Number of Poles	4
Overall Length	19.02 IN
Product Family	General Purpose
Pulley End Bearing Type	Ball
Pulley Face Code	Standard
Pulley Shaft Indicator	Standard
Rodent Screen	None
RoHS Status	ROHS COMPLIANT
Shaft Diameter	1.375 IN
Shaft Ground Indicator	Shaft Grounding
Shaft Rotation	Reversible
Shaft Slinger Indicator	No Slinger
Speed Code	Single Speed
Starting Method	INVERTER SPECIAL
Thermal Device - Bearing	None
Thermal Device - Winding	None
Vibration Sensor Indicator	No Vibration Sensor
Winding Thermal 1	None
Winding Thermal 2	None

Nameplate

NP3968A01A01									
CAT.NO.	ECS101M0H10FF4								
SPEC.	37Q435L001G1								
FRAME	215T		ENCL.	TEFC	IP	54			
HP	10	40	C AMB		CONT				
NOM. EFF.	94.8%	PF	93.7%	SF	1.50				
VOLTS	230/460		FLA	22.4/11.2					
RPM	1800		RPM-MAX	3000					
HZ	60	PH.	3	CLASS	F				
BEMF (V)	116/231		RS (OHMS)	0.23/0.93					
LD (MH)	5.8/23.2		LQ (MH)	19/75.9					
VPWM	CHP	60	TO	100					
CT	6	TO	60	VT	1	TO	100		
MATCHED INV	ACS380-04XX-[N/A]/17A0-4								
DE	6307		ODE	6206					
SERIAL #									

37LYQ435



REV. DESC: UPDATE DRAWING GRAPHICS

REV: H VERSION: 08 REVISED: 01:49:39 04/19/2022 TDR: 000001189579

37LYQ435

MODEL NO. 37LYQ435

BY: ENJEFD0

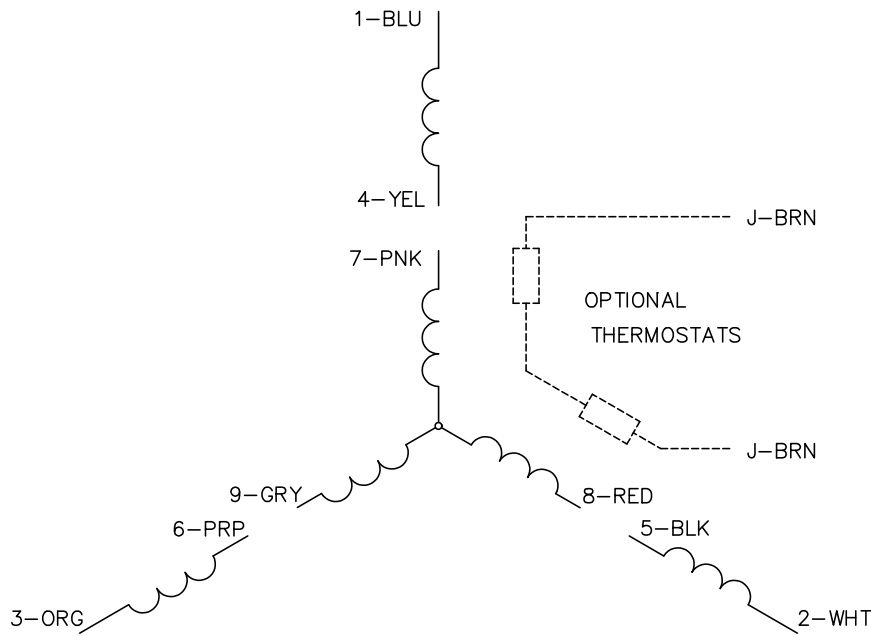
REF: -

BALDOR - RELIANCE®

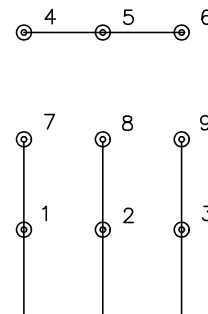
HOR 213-5T TEFC B INT SH GND ECS

37LYQ435

CD0005

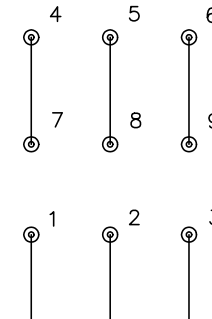


LOW VOLTAGE
(2Y)



LINE

HIGH VOLTAGE
(1Y)



LINE

NOTES:

1. INTERCHANGE ANY TWO LINE LEADS TO REVERSE ROTATION.
2. OPTIONAL THERMOSTATS ARE PROVIDED WHEN SPECIFIED.
3. ACTUAL NUMBER OF INTERNAL PARALLEL CIRCUITS MAY BE A MULTIPLE OF THOSE SHOWN ABOVE.
4. LEAD COLORS ARE OPTIONAL. LEADS MUST ALWAYS BE NUMBERED AS SHOWN.

CD0005

REV. DESC: REVISE TO SHOW OPTIONAL COLORS			
REV. LTR: E	BY: JLP	REVISED: 01/19/99 10:15	TDR: 0171435
S00000		FILE: AAA00005140	MDL: -
		MTL: -	

BALDOR ELECTRIC Co.

3PH, DV, 9 LEADS