

ABB BALDOR RELIANCE III

Customer information packet

ECS101M0H10FB4

10HP, 1800RPM, 3PH, 60HZ, 215TC, TEFC, N

Class - None

Division - Not Applicable

Specifications

Enclosure	TEFC
Frame	215TC
Frame Material	Steel
Frequency	60.00 Hz
Haz Area Class and Group	None
Haz Area Division	Not Applicable
Motor Letter Type	Three Phase
Output @ Frequency	10.000 HP @ 60 HZ
Phase	3
Synchronous Speed @ Frequency	1800 RPM @ 60 HZ
Voltage @ Frequency	230.0 V @ 60 HZ 460.0 V @ 60 HZ
Agency Approvals	UL WEEE
Ambient Temperature	40 °C
Auxiliary Box	NO AUXILLARY BOX
Auxiliary Box Lead Termination	None
Base Indicator	Rigid
Bearing Grease Type	Polyrex EM (-20F +300F)
Blower	None
Constant Torque Speed Range	6
Current @ Voltage	11.000 A @ 460.0 V 22.000 A @ 230.0 V
Drip Cover	No Drip Cover
Duty Rating	CONT
Efficiency @ 100% Load	94.8 %
Electrically Isolated Bearing	Not Electrically Isolated
Feedback Device	NO FEEDBACK
Heater Indicator	No Heater
High Voltage Full Load Amps	11.0 a
Insulation Class	F
Inverter Code	Inverter Duty

Part Detail

Revision	G
Type	AC
Mech. spec.	
Base	
Status	PRD/A
Elec. spec.	37WGA0017
Layout	37LYQ466
Eff. date	02-12-2026
CD Diagram	CD0005A25
Poles	04
Leads	9#12
Proprietary	False
Created date	09-21-2020

IP Rating	NONE
Lifting Lugs	Standard Lifting Lugs
Locked Bearing Indicator	Locked Bearing
Motor Lead Termination	Flying Leads
Motor Standards	NEMA
Motor Type	3740B
Mounting Arrangement	F1
Number of Poles	4
Overall Length	19.75 IN
Power Factor	94
Product Family	General Purpose
Pulley Face Code	C-Face
Rodent Screen	None
RoHS Status	ROHS COMPLIANT
Service Factor	1.50
Shaft Diameter	1.375 IN
Shaft Ground Indicator	Shaft Grounding
Shaft Rotation	Reversible
Speed	1800 rpm
Speed Code	Single Speed
Starting Method	Direct on line
Thermal Device - Bearing	None
Thermal Device - Winding	None
Vibration Sensor Indicator	No Vibration Sensor
Winding Thermal 1	None
Winding Thermal 2	None

Volts	460	Max RPM	3000	Conn Diag.	CD0005	Leads	9
Amps	11	Max Amps		Cs Diagram	CS0576	BEMF	116/231
HP	10	VFD#	ECIN4A12P0			LD	5.8/23.2
RPM	1800	S.F.	1.50			LQ	19/75.9
Phase/Hz	3/60	Rating	40 C AMB			Rs	0.9625 Meas. L-L

60034-2-3 Motor Performance at Standardized Operating Points

	RPM	% Speed	LB-FT	% Torque	HP	Efficiency	Loss (% FL)	Watts Loss (W)
P1	1622	90%	29.2	100%	9.0	93.1	6.65%	502
P2	902	50%	29.2	100%	5.0	90.9	5.01%	378
P3	451	25%	29.2	100%	2.5	85.5	4.22%	318
P4	1624	90%	14.6	50%	4.5	91.8	3.98%	300
P5	903	50%	14.6	50%	2.5	90.3	2.68%	202
P6	903	50%	7.3	25%	1.3	86.9	1.88%	142
P7	451	25%	7.3	25%	0.6	81.6	1.40%	106

61800-9-2 PDS Performance at Reference Operating Points

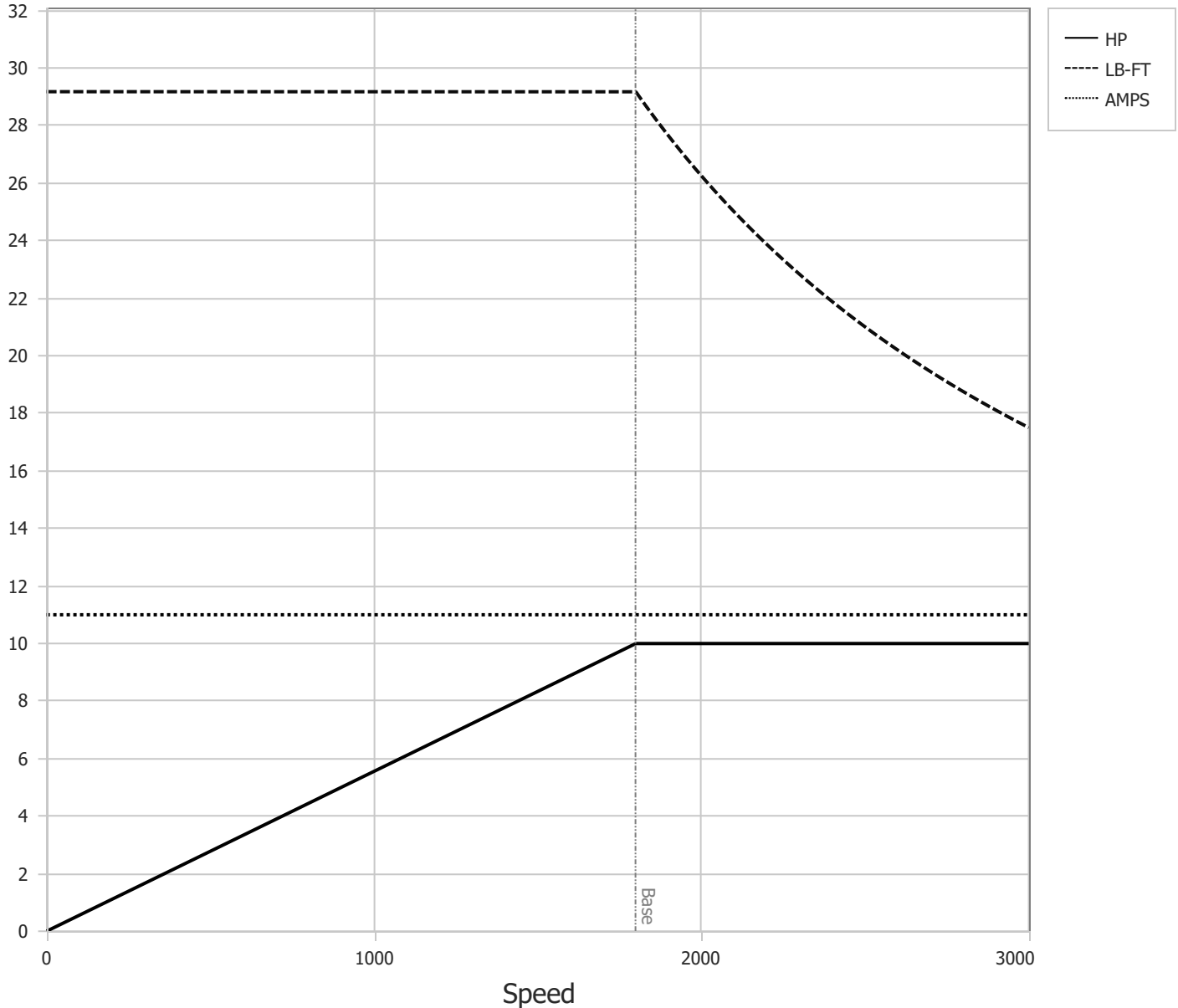
	RPM	% Speed	LB-FT	% Torque	HP	System Efficiency	Loss (% FL)	Watts Loss (W)
P1	1806	100%	29.2	100%	10.0	92.7	7.79%	588
P2	902	50%	29.2	100%	5.0	89.0	6.13%	463
P3	300	17%	29.2	100%	1.7	77.0	4.93%	372
P4	1802	100%	14.6	50%	5.0	91.5	4.58%	346
P5	903	50%	14.6	50%	2.5	89.3	2.97%	224
P6	300	17%	14.6	50%	0.8	78.6	2.25%	170
P7	903	50%	7.3	25%	1.3	87.3	1.80%	136
P8	301	17%	7.3	25%	0.4	76.4	1.27%	96

Points not taken in certified order.

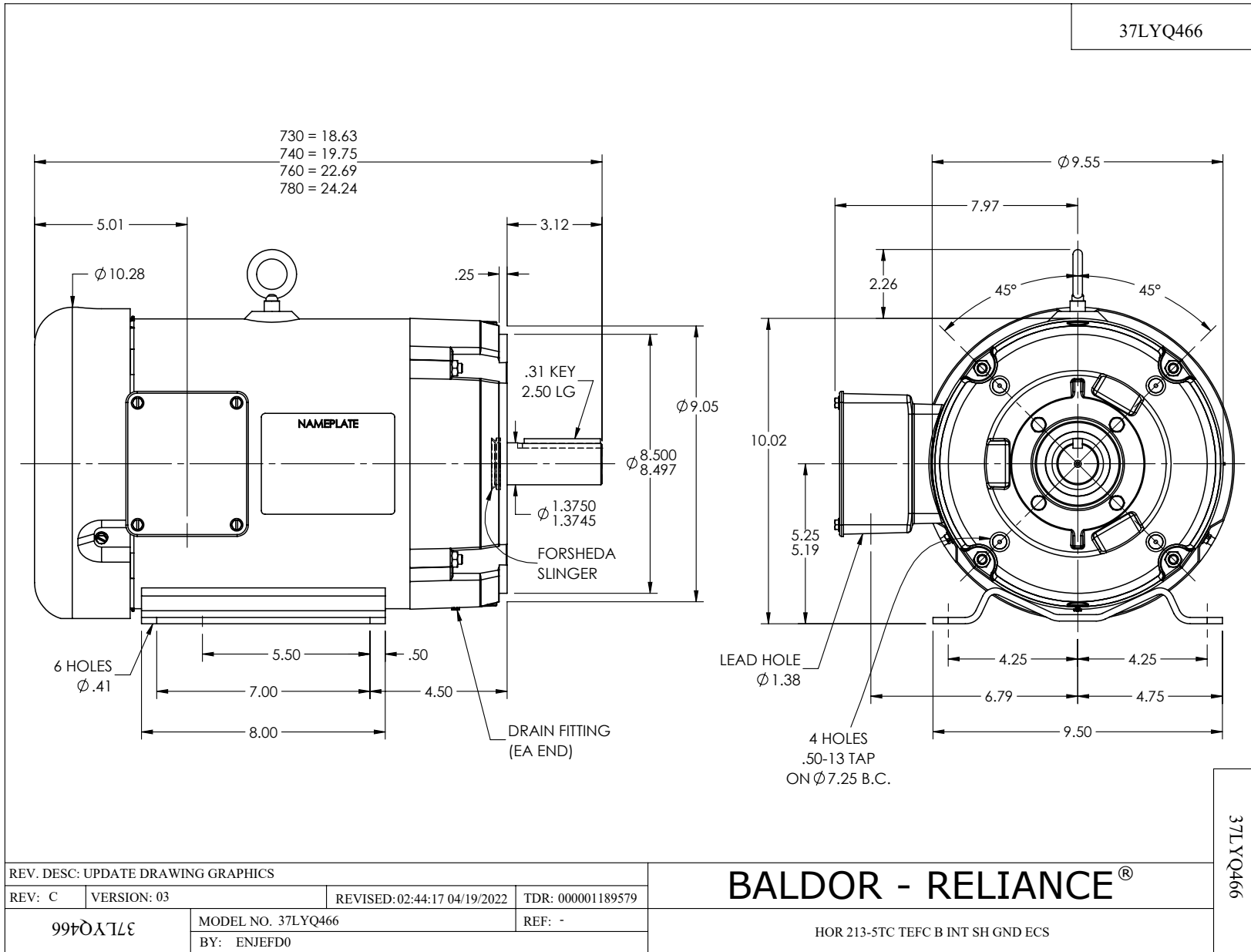
BALDOR • RELIANCE	DR By:	<u>R & D</u>	AC MOTOR PERFORMANCE CURVES	37WGL001 37Q435L001G1 Test - 112056
	CK By:	<u>USGAHIL</u>		
	APP By:			
	Date:	<u>03/13/2025</u>		

Volts	460	Max RPM	3000	Conn Diag.	CD0005	Leads	9
Amps	11	Max Amps		Cs Diagram	CS0576	BEMF	116/231
HP	10	VFD #	ECIN4A12P0			LD	5.8/23.2
RPM	1800	S.F.	1.50			LQ	19/75.9
Phase/Hz	3/60	Rating	40 C AMB			Rs	0.9625 Meas L-L

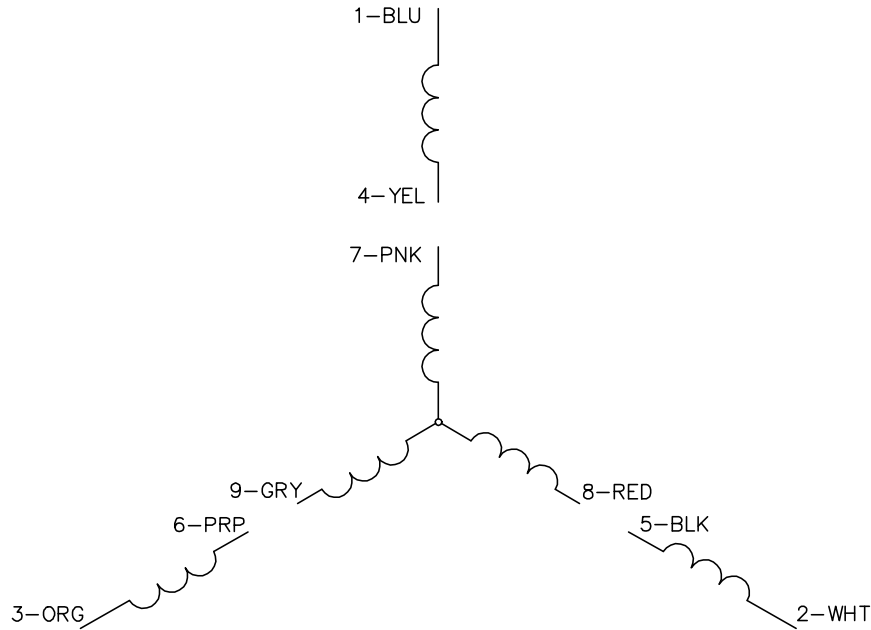
Constant Duty Operating Range



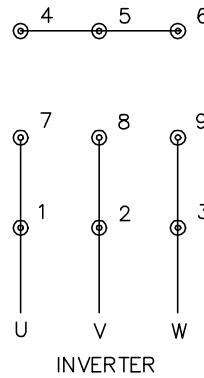
37LYQ466



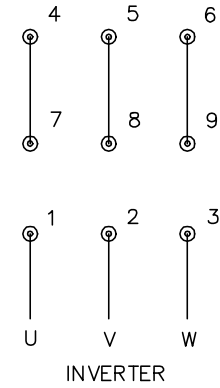
CD0005A25



LOW VOLTAGE
(2Y)



HIGH VOLTAGE
(1Y)



NOTES:

1. INTERCHANGE ANY TWO LINE LEADS TO REVERSE ROTATION.
2. ACTUAL NUMBER OF INTERNAL PARALLEL CIRCUITS MAY BE A MULTIPLE OF THOSE SHOWN ABOVE.
3. LEAD COLORS ARE OPTIONAL. LEADS MUST ALWAYS BE NUMBERED AS SHOWN.

CD0005A25

REV. DESC: NEW		
REV. LTR: -	VERSION: 00	TDR: 000001135746
FILE: \AAA\00253\082	REVISED: 01:10:57 03/30/2020	BY: ENMARSO
MTL: -	© □	

BALDOR - RELIANCE®

3PH, DV, 9 LEADS, ECS
SH 1 of 1