

BALDOR • RELIANCE

Customer information packet

ECS100T4H1DB4

1HP, 1800RPM, 3PH, 60HZ, 145TC, TEFC, TOP

Class - None

Division - Not Applicable

Specifications

| | |
|--------------------------------|---------------------------|
| Enclosure | TEFC |
| Frame | 145TC |
| Frame Material | Steel |
| Frequency | 60.00 Hz |
| Haz Area Class and Group | None |
| Haz Area Division | Not Applicable |
| Motor Letter Type | Three Phase |
| Output @ Frequency | 1.000 HP @ 60 HZ |
| Phase | 3 |
| Synchronous Speed @ Frequency | 1800 RPM @ 60 HZ |
| Voltage @ Frequency | 460.0 V @ 60 HZ |
| Agency Approvals | UL WEEE |
| Ambient Temperature | 40 °C |
| Auxillary Box | No Auxillary Box |
| Auxillary Box Lead Termination | None |
| Base Indicator | Rigid |
| Bearing Grease Type | Polyrex EM (-20F +300F) |
| Blower | None |
| Constant Torque Speed Range | 6 |
| Current @ Voltage | 1.200 A @ 460.0 V |
| Drip Cover | No Drip Cover |
| Duty Rating | CONT |
| Efficiency @ 100% Load | 89.3 % |
| Electrically Isolated Bearing | Not Electrically Isolated |
| Feedback Device | NO FEEDBACK |
| Heater Indicator | No Heater |
| High Voltage Full Load Amps | 1.2 a |
| Insulation Class | F |
| Inverter Code | Inverter Duty |
| IP Rating | NONE |
| Lifting Lugs | No Lifting Lugs |

Part detail

| | |
|--------------|---------------------|
| Revision | D |
| Type | AC |
| Mech. spec. | |
| Base | |
| Status | PRD/A |
| Elec. spec. | 35WGA0024 |
| Layout | 35LYE5291 |
| Eff. date | 05-06-2024 |
| CD Diagram | CD0006B03 |
| Poles | 04 |
| Leads | 3#18 13" LONG LEADS |
| Proprietary | False |
| Created date | 08-31-2020 |

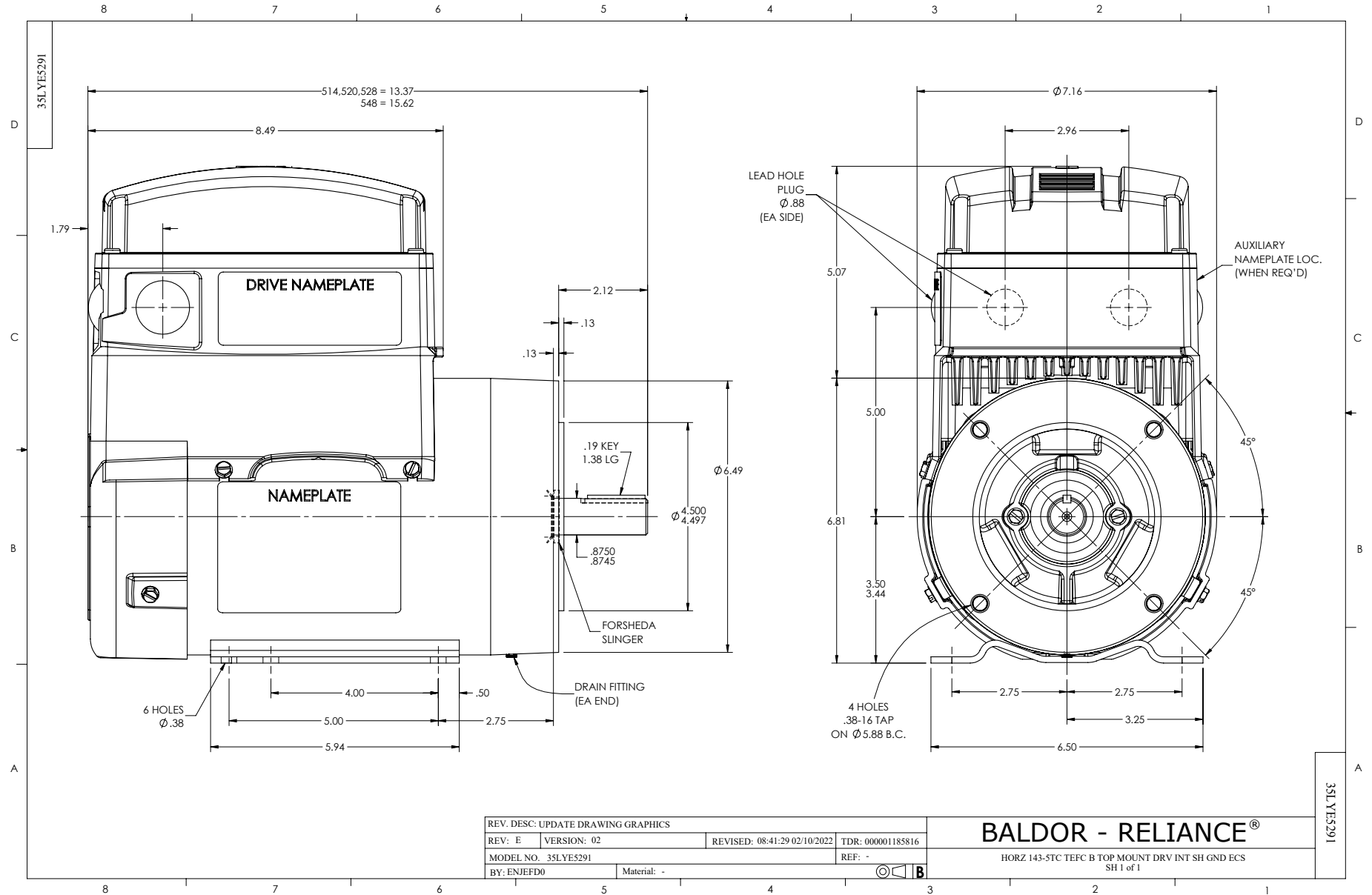
| | |
|-----------------------------------|---------------------|
| Locked Bearing Indicator | Locked Bearing |
| Motor Lead Termination | Flying Leads |
| Motor Standards | NEMA |
| Motor Type | 3514B |
| Mounting Arrangement | F1 |
| Number of Poles | 4 |
| Overall Length | 13.37 IN |
| Power Factor | 97 |
| Product Family | General Purpose |
| Pulley Face Code | C-Face |
| Rodent Screen | None |
| Service Factor | 1.00 |
| Shaft Diameter | 0.875 IN |
| Shaft Ground Indicator | Shaft Grounding |
| Shaft Rotation | Reversible |
| Speed | 1800 rpm |
| Speed Code | Single Speed |
| Starting Method | Direct on line |
| Thermal Device - Bearing | None |
| Thermal Device - Winding | None |
| Vibration Sensor Indicator | No Vibration Sensor |
| Winding Thermal 1 | None |
| Winding Thermal 2 | None |

Nameplate

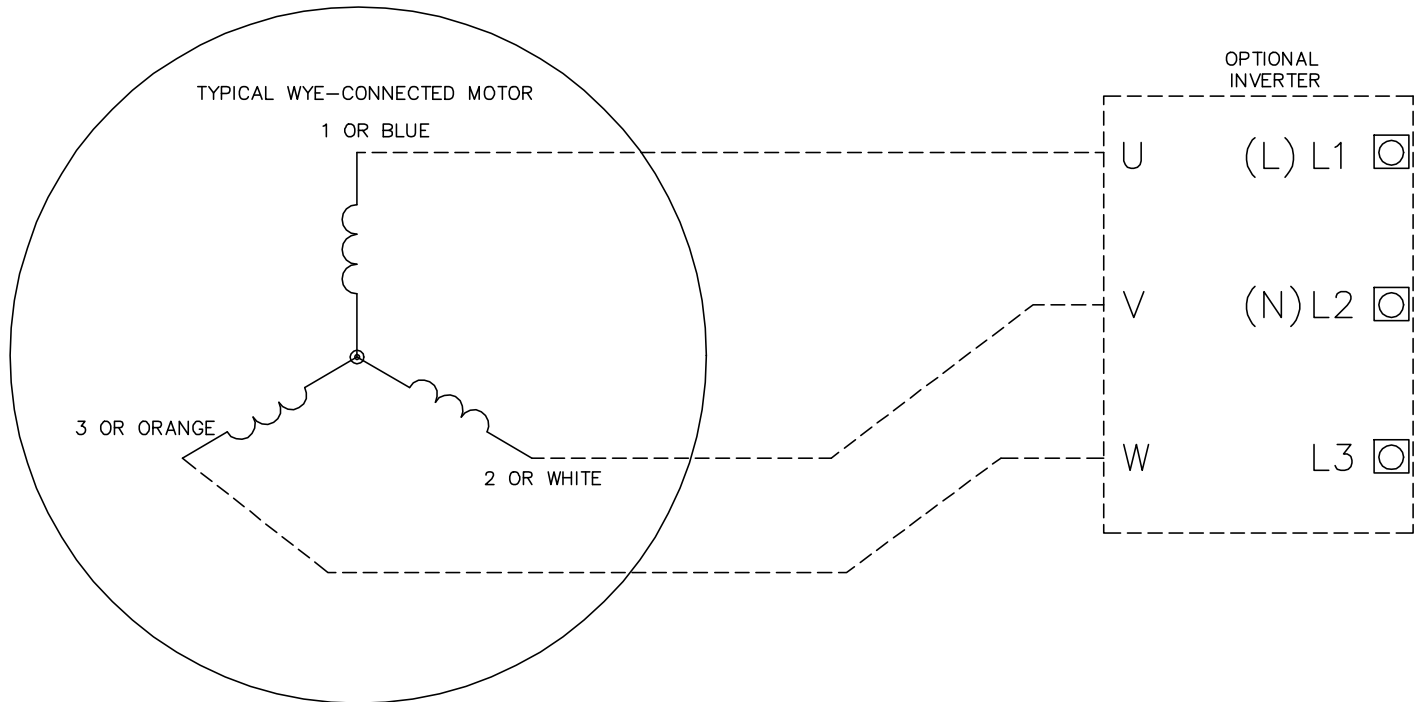
| | | | | | | |
|------------------|----------|---------------------|---|-----------|-----|--|
| NP3978A01 | | | | | | |
| PART NO. | ECI4A2P2 | | | | | |
| U1 | 480 | PH | 3 | HZ | 60 | |
| I1 | 1.8 | W/EXT. CHOKE | | | 1.5 | |
| SERIAL # | | | | | | |

NP3968A01A01

| | | | | | | | |
|--------------------|---------------|--------------|------------------|-----------|--------------|-----------|-----|
| CAT.NO. | ECS100T4H1DB4 | | | | | | |
| SPEC. | 35-0001552 | | | | | | |
| FRAME | 145TC | ENCL. | TEFC | IP | 54 | | |
| HP | 1 | 40 | C AMB | CONT | | | |
| NOM. EFF. | 89.3 | PF | 97 | SF | 1 | | |
| VOLTS | 460 | | FLA | 1.2 | | | |
| RPM | 1800 | | RPM-MAX | 4000 | | | |
| HZ | 60 | | PH. | 3 | CLASS | F | |
| BEMF (V) | 248 | | RS (OHMS) | 23.2 | | | |
| LD (MH) | 194 | | LQ (MH) | 721 | | | |
| VPWM | CHP | 60 | TO | 133 | | | |
| CT | 6 | TO | 60 | VT | 1 | TO | 133 |
| MATCHED INV | ECI4A2P2 | | | | | | |
| DE | 6205 | | ODE | 6203 | | | |
| SERIAL # | | | | | | | |



CD0006B03



NOTES:

1. INTERCHANGE ANY TWO LINE LEADS TO REVERSE ROTATION.
2. ACTUAL NUMBER OF INTERNAL PARALLEL CIRCUITS MAY VARY.

CD0006B03

| | | |
|--|------------------------------|-------------------|
| REV. DESC: CHANGE LEAD COLORS TO BLUE WHITE ORANGE | | |
| REV. LTR: A | VERSION: 01 | TDR: 000001158598 |
| FILE: \AAA\00252\917 | REVISED: 11:01:03 01/19/2021 | BY: ENMARSO |
| MTL: - | © □ | |

BALDOR - RELIANCE®

3PH, SV, 3 LEADS, WYE CONNECTED, ECS

SH 1 of 1