



Customer information packet

ECS100A8H2DC4

2HP, 1800RPM, 3PH, 60HZ, 143TC, 3524B, TEFC, F1

Class - None

Division - Not Applicable

Specifications

Enclosure	TEFC
Frame	143TC
Frame Material	Steel
Frequency	60.00 Hz
Haz Area Class and Group	None
Haz Area Division	Not Applicable
Motor Letter Type	Brushless Wound Field PM Rotor
Output @ Frequency	2.000 HP @ 60 HZ
Phase	3
Synchronous Speed @ Frequency	1800 RPM @ 60 HZ
Voltage @ Frequency	230.0 V @ 60 HZ
Agency Approvals	BLUETOOTH CULUS WEEE
Ambient Temperature	40 °C
Auxillary Box	No Auxillary Box
Auxillary Box Lead Termination	None
Base Indicator	No Mounting
Bearing Grease Type	Polyrex EM (-20F +300F)
Blower	None
Constant Torque Speed Range	6
Current @ Voltage	4.800 A @ 230.0 V
Design Code	-
Drip Cover	No Drip Cover
Duty Rating	CONT
Efficiency @ 100% Load	91.3 %
Electrically Isolated Bearing	Not Electrically Isolated
Feedback Device	NO FEEDBACK
Heater Indicator	No Heater
High Voltage Full Load Amps	4.8 a
Insulation Class	F
Inverter Code	03

Part detail

Revision	C
Type	AC
Mech. spec.	35E5253
Base	
Status	PRD/A
Elec. spec.	35WGG964
Layout	35LYE5253
Eff. date	10-31-2024
CD Diagram	CD0006B03
Poles	04
Leads	3#16 13" LONG LEADS Y
Proprietary	False
Created date	05-10-2024

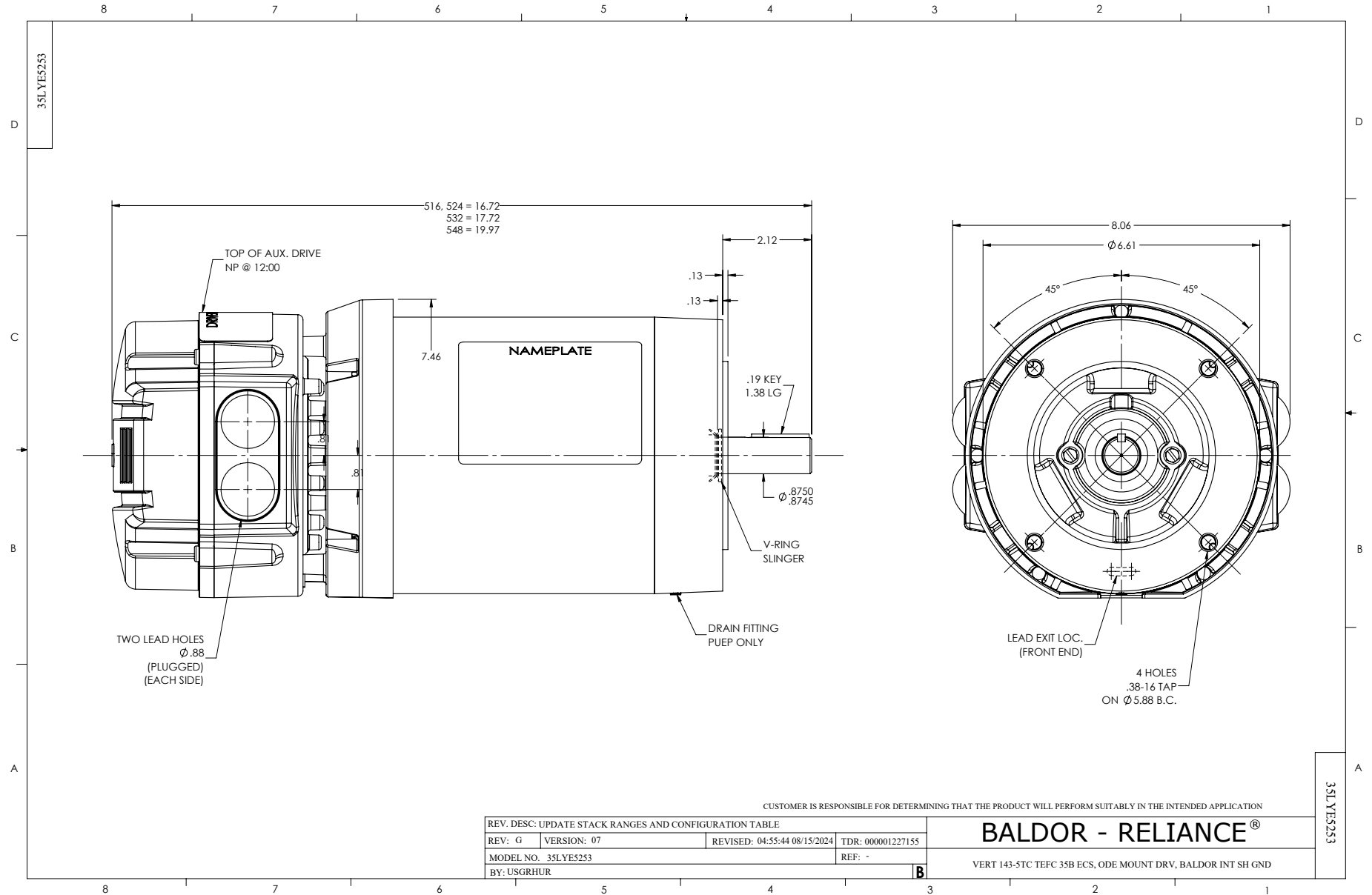
KVA Code	-
Lifting Lugs	No Lifting Lugs
Locked Bearing Indicator	Locked Bearing
Motor Lead Quantity/Wire Size	3 @ 16 AWG
Motor Lead Termination	Flying Leads
Motor Standards	NEMA
Motor Type	3524B
Mounting Arrangement	F1
Number of Poles	4
Overall Length	17.72 IN
Power Factor	93
Product Family	General Purpose
Pulley Face Code	C-Face
Rodent Screen	None
Service Factor	1.00
Shaft Diameter	0.875 IN
Shaft Ground Indicator	Shaft Grounding
Shaft Rotation	Reversible
Speed	1800 rpm
Speed Code	Single Speed
Starting Method	Direct on line
Thermal Device - Bearing	None
Thermal Device - Winding	None
Vibration Sensor Indicator	No Vibration Sensor
Winding Thermal 1	None
Winding Thermal 2	None

Nameplate

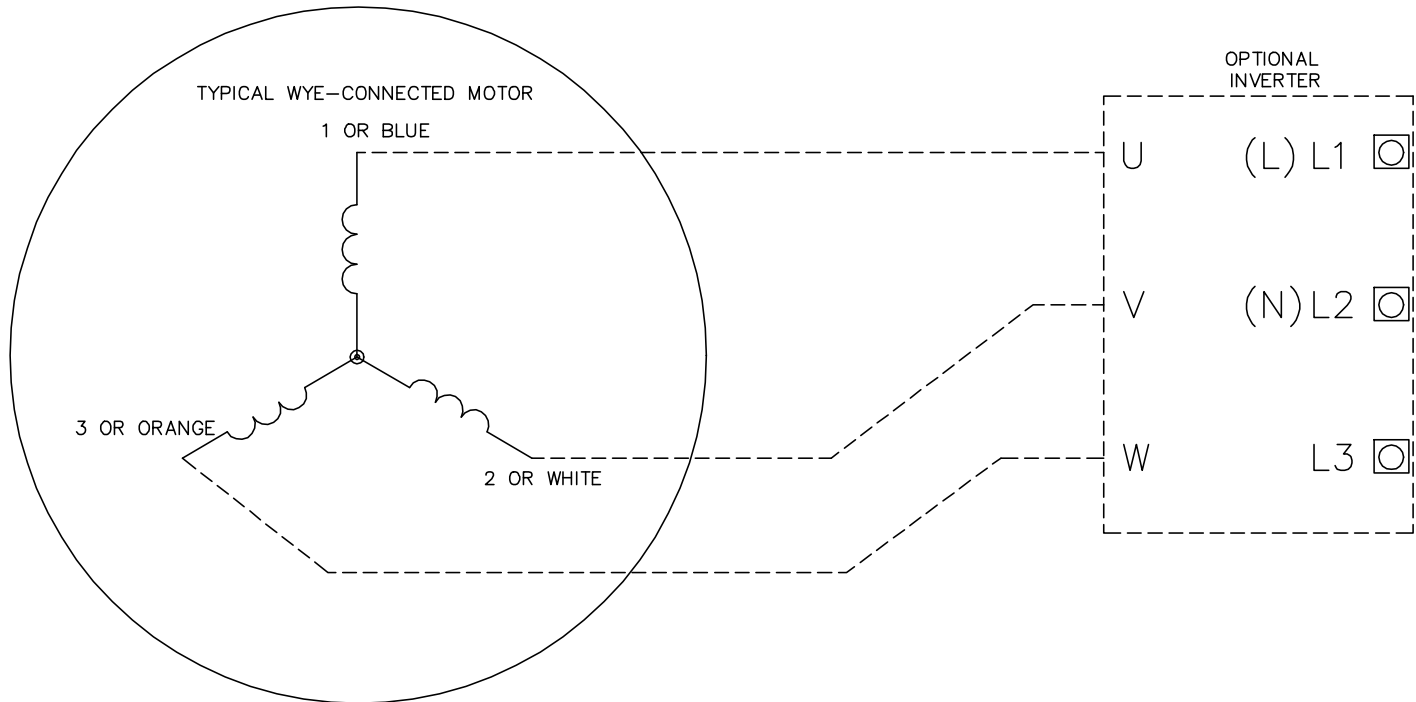
NP3968A01A01									
CAT.NO.	ECS100A8H2DC4								
SPEC.	35E5253G964G1								
FRAME	143TC		ENCL.	TEFC	IP	54			
HP	2	40	C AMB		CONT				
NOM. EFF.	91.3	PF	93	SF	1				
VOLTS	230		FLA	4.8					
RPM	1800		RPM-MAX	4000					
HZ	60	PH.	3	CLASS	F				
BEMF (V)	148		RS (OHMS)	2.94					
LD (MH)	22.1		LQ (MH)	97.1					
VPWM	CHP	60	TO	133					
CT	6	TO	60	VT	6	TO	60		
MATCHED INV	ECI8A7P0								
DE	6205		ODE	6203					
SERIAL #									

NP3978A01

PART NO.	ECI8A7P0				
U1	240	PH	1	HZ	60
I1	12.5	W/EXT. CHOKE		10.2	
SERIAL #					



CD0006B03



NOTES:

1. INTERCHANGE ANY TWO LINE LEADS TO REVERSE ROTATION.
2. ACTUAL NUMBER OF INTERNAL PARALLEL CIRCUITS MAY VARY.

CD0006B03

REV. DESC: CHANGE LEAD COLORS TO BLUE WHITE ORANGE		
REV. LTR: A	VERSION: 01	TDR: 000001158598
FILE: \AAA\00252\917	REVISED: 11:01:03 01/19/2021	BY: ENMARSO
MTL: -	© □	

BALDOR - RELIANCE®

3PH, SV, 3 LEADS, WYE CONNECTED, ECS

SH 1 of 1