

ABB BALDOR RELIANCE III



Customer information packet

ECS100A4H3EB4

3HP, 1800RPM, 3PH, 60HZ, 182TC, TEFC, AXIAL

Class - None

Division - Not Applicable

Specifications

Enclosure	TEFC
Frame	182TC
Frame Material	Steel
Frequency	60.00 Hz
Haz Area Class and Group	None
Haz Area Division	Not Applicable
Motor Letter Type	Three Phase
Output @ Frequency	3.000 HP @ 60 HZ
Phase	3
Synchronous Speed @ Frequency	1800 RPM @ 60 HZ
Voltage @ Frequency	460.0 V @ 60 HZ
Agency Approvals	UL WEEE
Ambient Temperature	40 °C
Auxiliary Box	NO AUXILLARY BOX
Auxiliary Box Lead Termination	None
Base Indicator	No Mounting
Bearing Grease Type	Polyrex EM (-20F +300F)
Blower	None
Constant Torque Speed Range	6
Current @ Voltage	3.700 A @ 460.0 V
Drip Cover	No Drip Cover
Duty Rating	CONT
Efficiency @ 100% Load	92.8 %
Electrically Isolated Bearing	Not Electrically Isolated
Feedback Device	NO FEEDBACK
Heater Indicator	No Heater
High Voltage Full Load Amps	3.7 a
Insulation Class	F
Inverter Code	Inverter Duty
IP Rating	NONE
Lifting Lugs	Standard Lifting Lugs

Part Detail

Revision	H
Type	AC
Mech. spec.	
Base	
Status	PRD/A
Elec. spec.	36WGA0025
Layout	36LYT292
Eff. date	01-16-2026
CD Diagram	CD0006B03
Poles	04
Leads	3#16 15" LONG LEADS
Proprietary	False
Created date	08-31-2020

Locked Bearing Indicator	Locked Bearing
Motor Lead Termination	Flying Leads
Motor Standards	NEMA
Motor Type	3624B
Mounting Arrangement	F1
Number of Poles	4
Overall Length	22.25 IN
Power Factor	97
Product Family	General Purpose
Pulley Face Code	C-Face
Rodent Screen	None
Service Factor	1.00
Shaft Diameter	1.125 IN
Shaft Ground Indicator	Shaft Grounding
Shaft Rotation	Reversible
Speed	1800 rpm
Speed Code	Single Speed
Starting Method	Direct on line
Thermal Device - Bearing	None
Thermal Device - Winding	None
Vibration Sensor Indicator	No Vibration Sensor
Winding Thermal 1	None
Winding Thermal 2	None

Volts	460	Max RPM	3000	Conn Diag.	CD0006B03	Leads	3
Amps	3.7	Max Amps		Cs Diagram	CS1126	BEMF	172
HP	3	VFD#	ECI4A4P1			LD	51
RPM	1800	S.F.	1.00			LQ	177
Phase/Hz	3/60	Rating	40C AMB CONT			Rs	3.8460 Meas. L-L

60034-2-3 Motor Performance at Standardized Operating Points

	RPM	% Speed	LB-FT	% Torque	HP	Efficiency	Loss (% FL)	Watts Loss (W)
P1	1627	90%	8.8	100%	2.7	91.3	8.59%	194
P2	904	50%	8.8	100%	1.5	89.3	6.00%	136
P3	452	25%	8.8	100%	0.8	83.4	4.94%	112
P4	1628	90%	4.4	50%	1.4	91.8	3.99%	90
P5	904	50%	4.4	50%	0.8	89.9	2.80%	63
P6	904	50%	2.2	25%	0.4	87.9	1.70%	39
P7	452	25%	2.2	25%	0.2	83.7	1.21%	27

61800-9-2 PDS Performance at Reference Operating Points

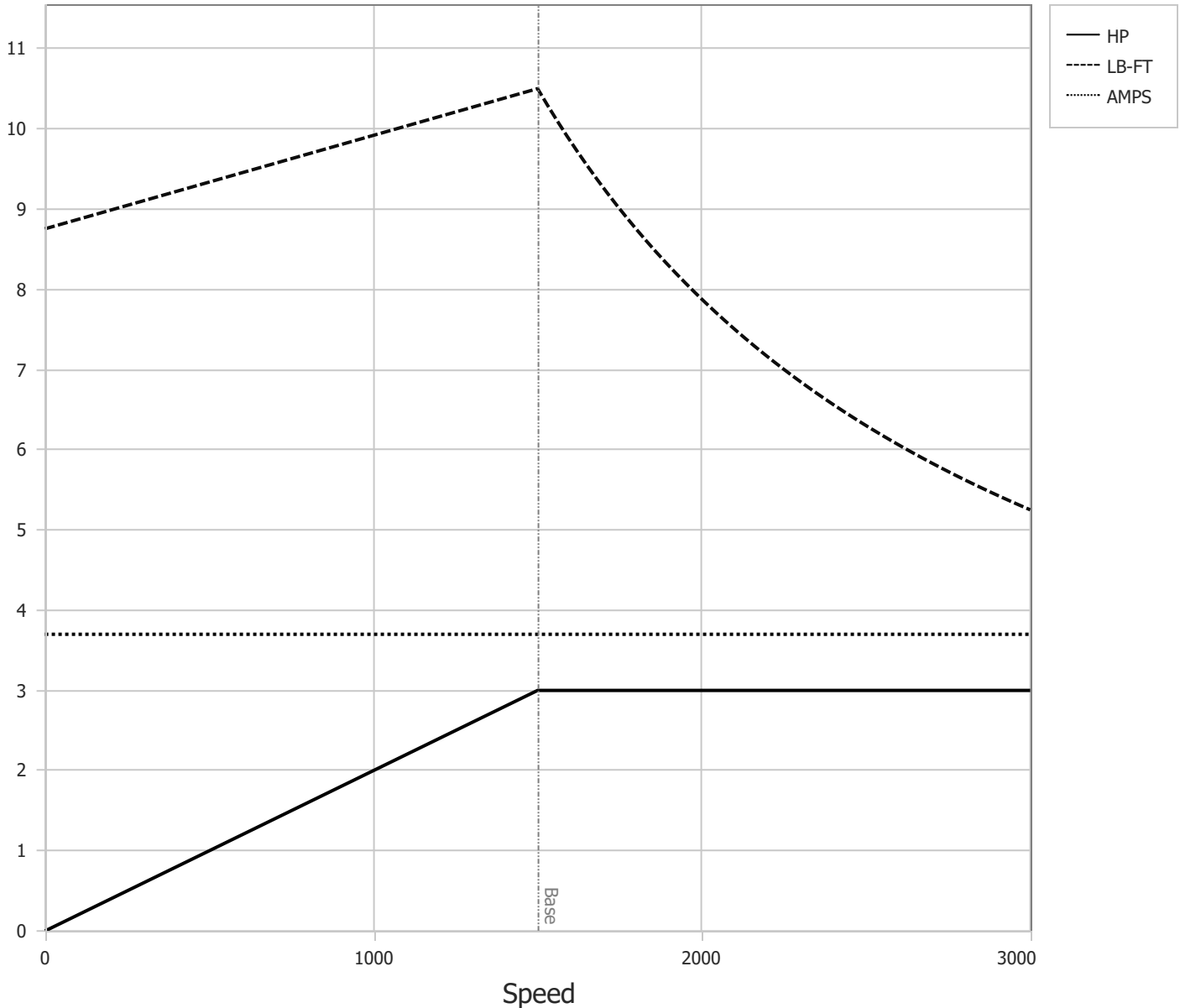
	RPM	% Speed	LB-FT	% Torque	HP	System Efficiency	Loss (% FL)	Watts Loss (W)
P1	1804	100%	8.8	100%	3.0	89.8	11.23%	254
P2	904	50%	8.8	100%	1.5	84.8	8.87%	201
P3	301	17%	8.8	100%	0.5	69.2	7.37%	167
P4	1809	100%	4.4	50%	1.5	88.5	6.44%	146
P5	904	50%	4.4	50%	0.8	84.1	4.70%	106
P6	301	17%	4.4	50%	0.3	68.2	3.86%	87
P7	904	50%	2.2	25%	0.4	80.2	3.06%	69
P8	301	17%	2.2	25%	0.1	62.6	2.46%	56

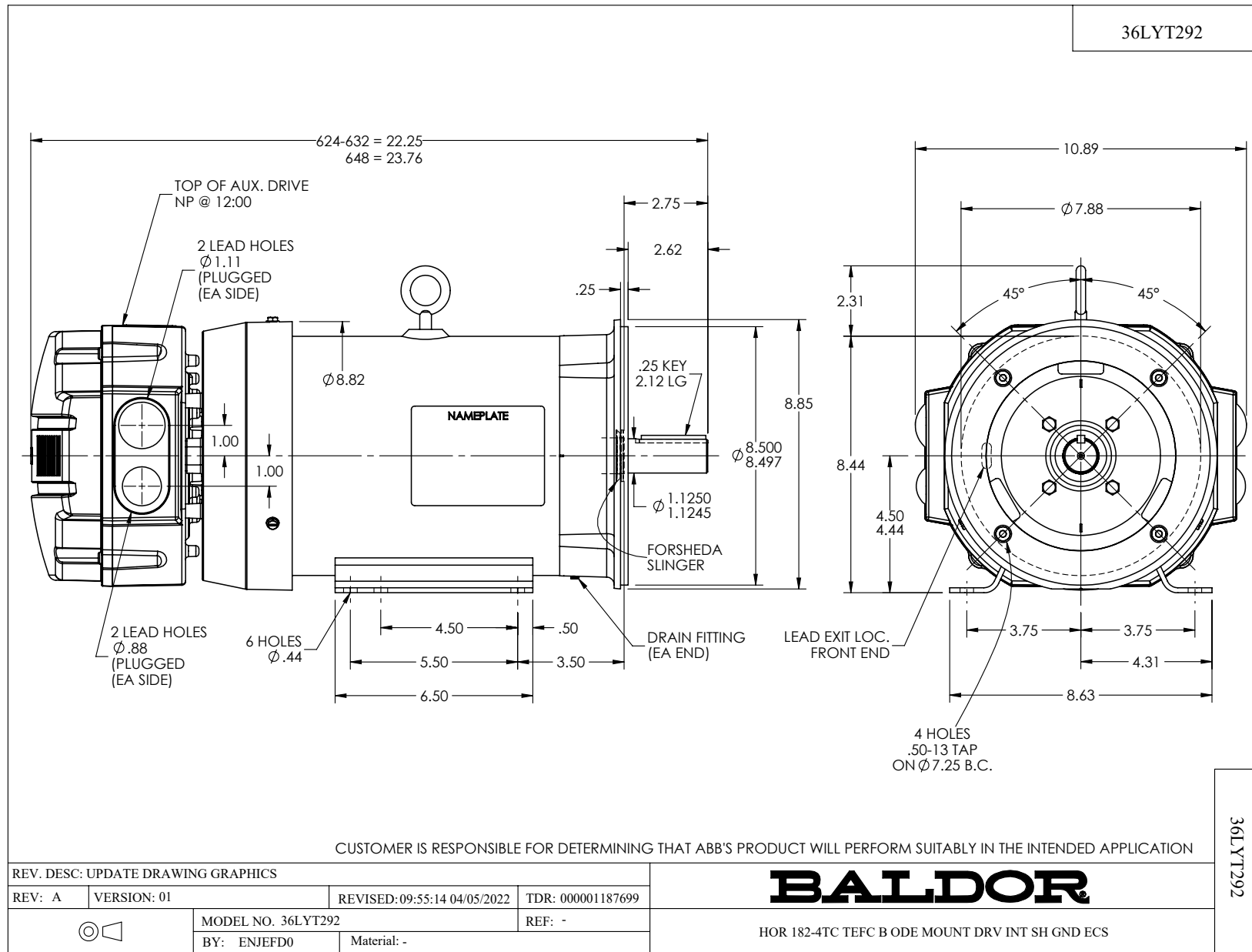
Points not taken in certified order.

BALDOR • RELIANCE	DR By:	<u>R & D</u>	AC MOTOR PERFORMANCE CURVES	36WGA0025 36-0000-3655 Test - 111781
	CK By:	<u>USBIBAK</u>		
	APP By:	<u>USJAROB1</u>		
	Date:	<u>01/09/2025</u>		

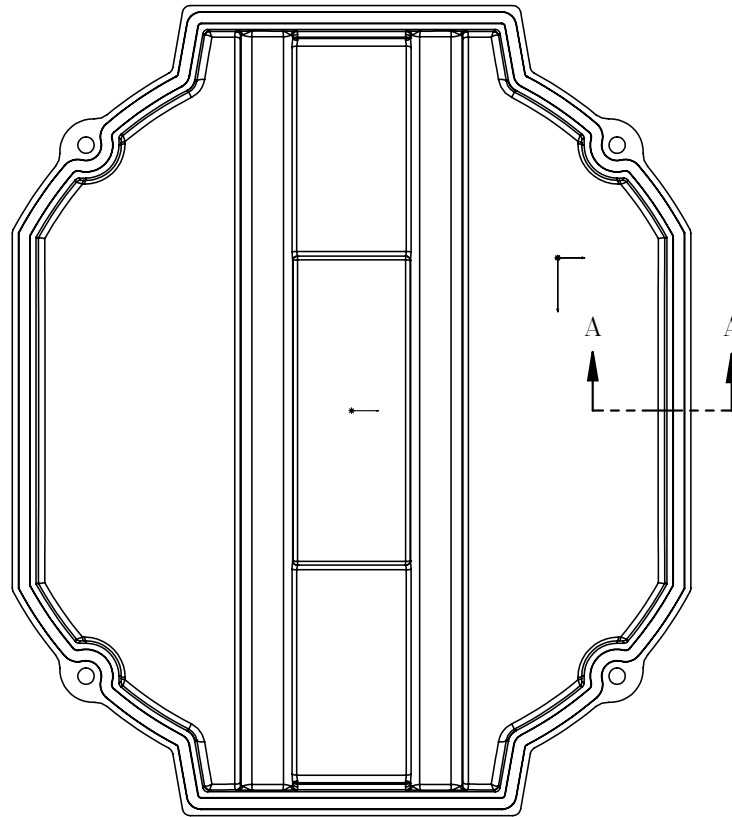
Volts	460	Max RPM	3000	Conn Diag.	CD0006B03	Leads	3
Amps	3.7	Max Amps		Cs Diagram	CS1126	BEMF	172
HP	3	VFD #	ECI4A4P1			LD	51
RPM	1800	S.F.	1.00			LQ	177
Phase/Hz	3/60	Rating	40C AMB CONT			Rs	3.8460 Meas L-L

Constant Duty Operating Range

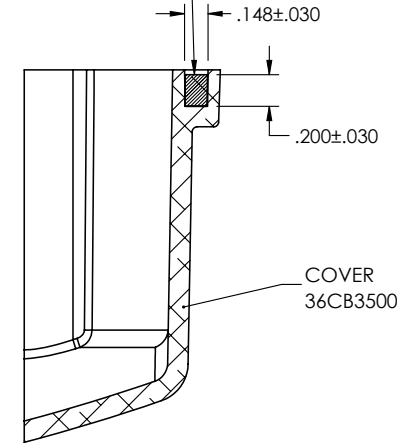




36CB3500A00



MATERIAL: RAMPF, RAKU-PUR 32-3280-51L



SECTION A-A

36CB3500A00

REV. DESC: UPDATE MATERIAL

REV: A	VERSION: 01	REVISED: 10:45:08 03/29/2019	TDR: 000001101646
--------	-------------	------------------------------	-------------------



MODEL NO. 36CB3500A00

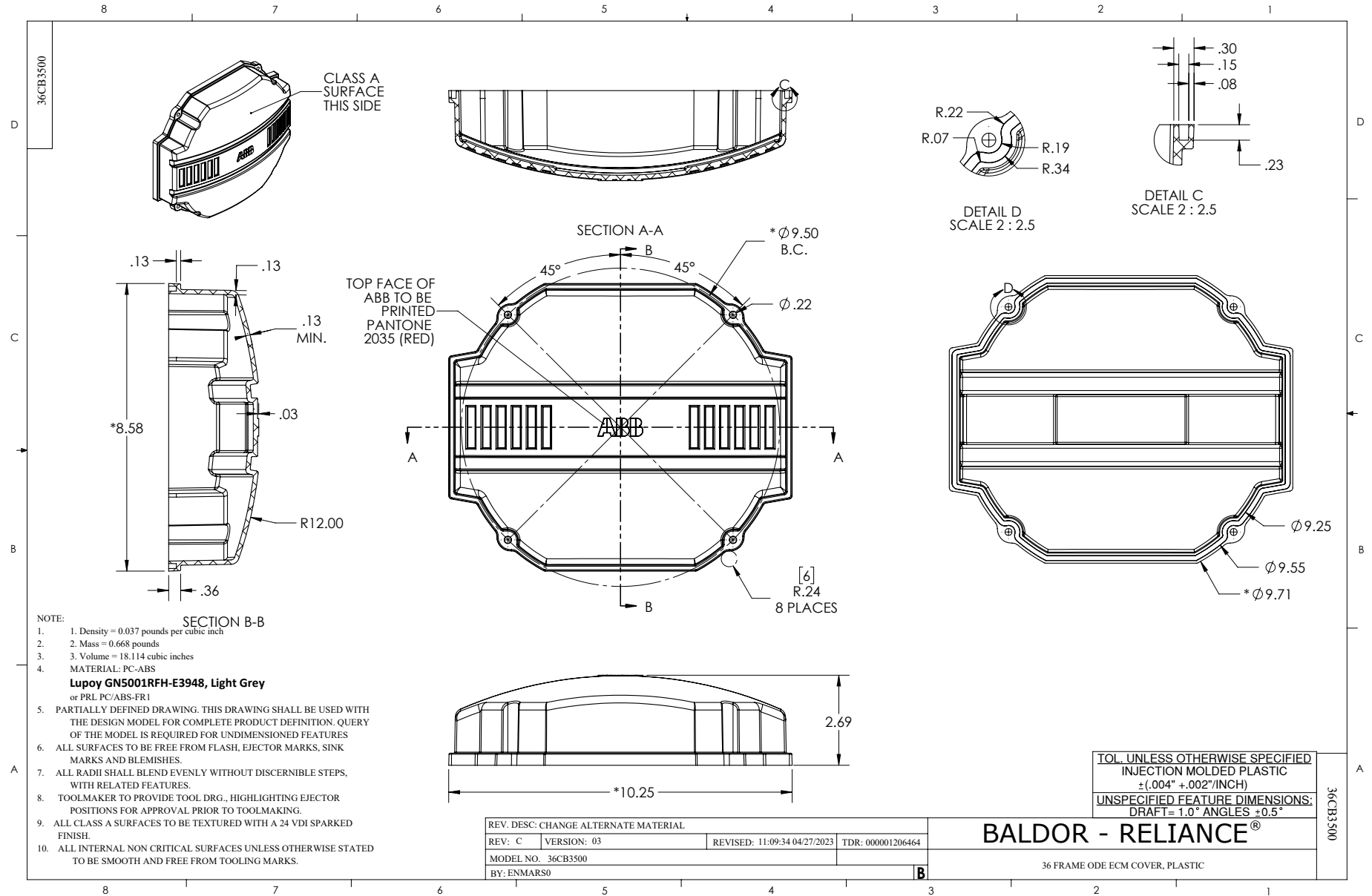
REF: -

BY: ENMARS0

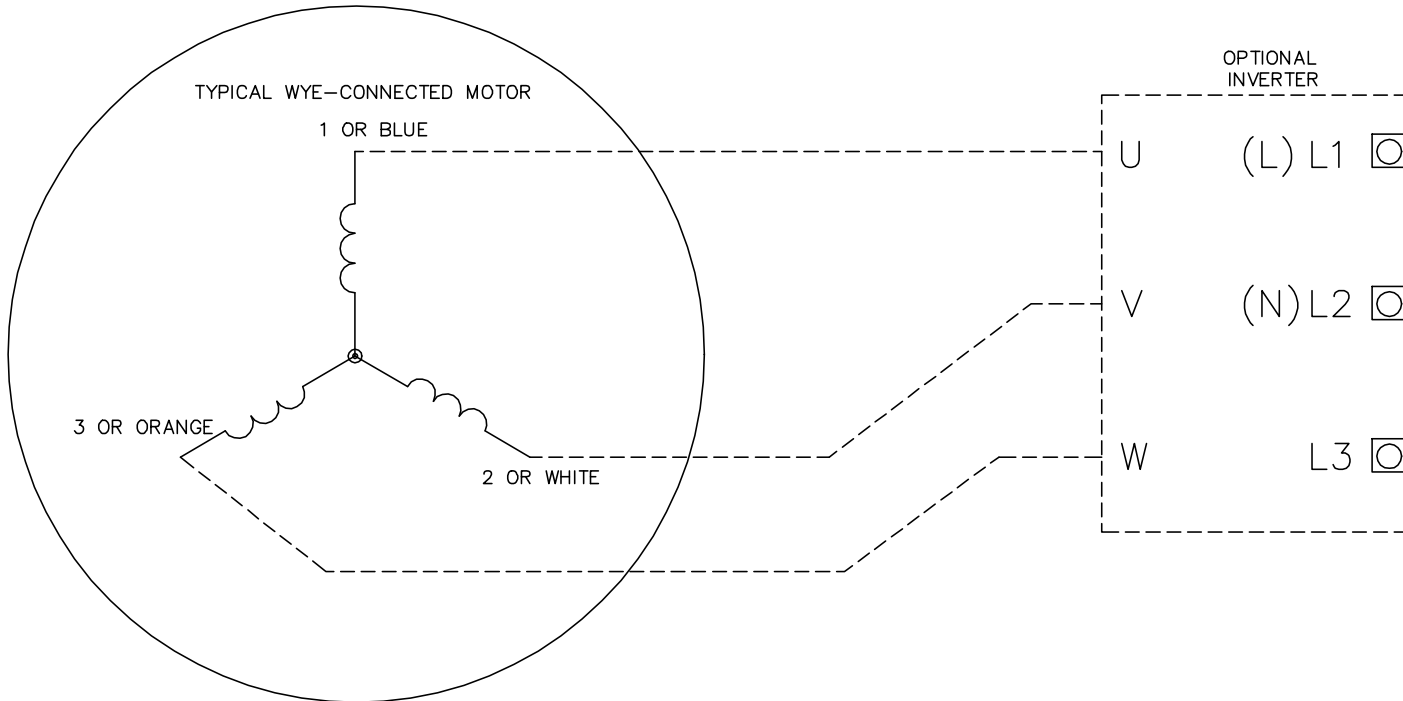
Material: -

BALDOR - RELIANCE®

36 FRAME ODE ECM COVER WITH FOAM SEAL



CD0006B03



NOTES:

1. INTERCHANGE ANY TWO LINE LEADS TO REVERSE ROTATION.
2. ACTUAL NUMBER OF INTERNAL PARALLEL CIRCUITS MAY VARY.

CD0006B03

REV. DESC: CHANGE LEAD COLORS TO BLUE WHITE ORANGE		
REV. LTR: A	VERSION: 01	TDR: 000001158598
FILE: \AAA\00252\917	REVISED: 11:01:03 01/19/2021	BY: ENMARSO
MTL: -	© □	

BALDOR - RELIANCE®

3PH, SV, 3 LEADS, WYE CONNECTED, ECS

SH 1 of 1