

BALDOR • RELIANCE

Customer information packet

ECS100A4H3DB4

3HP, 1800RPM, 3PH, 60HZ, 145TC, 3532B, TEFC, F1

Part detail

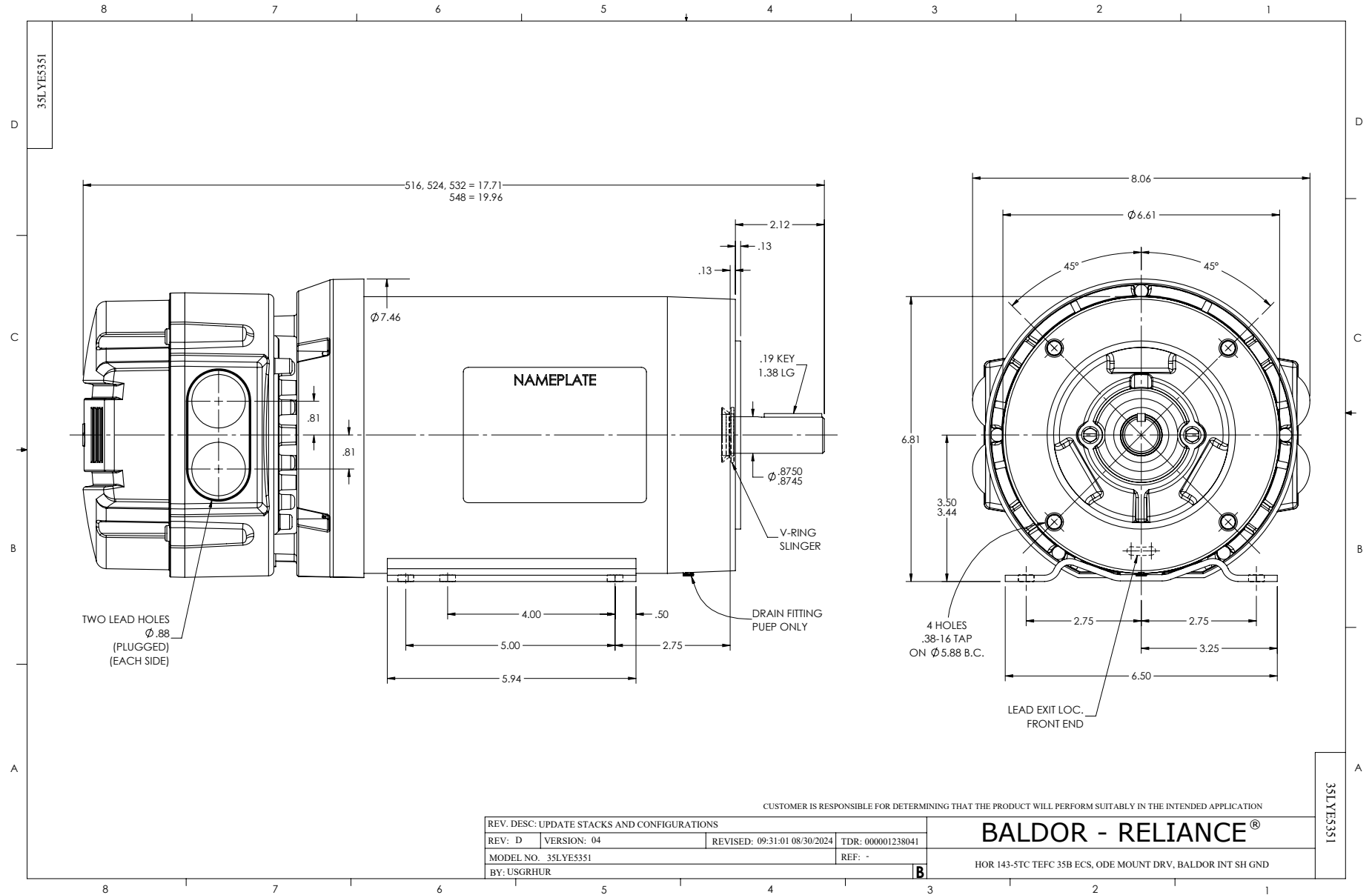
Revision	C
Type	AC
Mech. spec.	35E5351
Base	
Status	PRD/A
Elec. spec.	35WGG943
Layout	35LYE5351
Eff. date	10-31-2024
CD Diagram	CD0006B03
Poles	04
Leads	3#116 13" LONG LEADS Y
Proprietary	False
Created date	05-09-2024

Nameplate

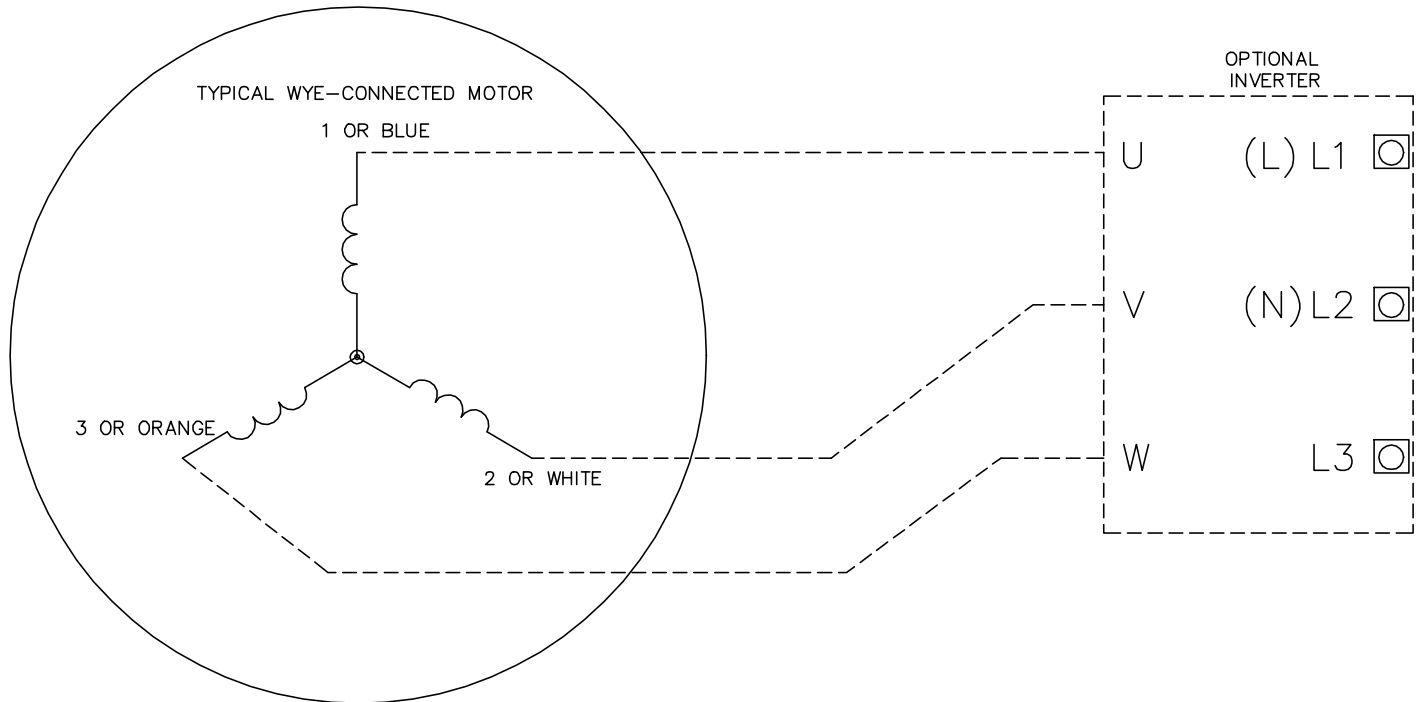
NP3968A01A01									
CAT.NO.	ECS100A4H3DB4								
SPEC.	35E5351G943								
FRAME	145TC		ENCL.	TEFC	IP	54			
HP	3	40	C AMB		CONT				
NOM. EFF.	91	PF	97	SF	1.15				
VOLTS	460		FLA	3.5					
RPM	1800		RPM-MAX	4000					
HZ	60	PH.	3	CLASS	F				
BEMF (V)	267		RS (OHMS)	6.72					
LD (MH)	57.9		LQ (MH)	218					
VPWM	CHP	60	TO	133					
CT	6	TO	60	VT	6	TO	60		
MATCHED INV	ECI4A4P1								
DE	6205		ODE	6203					
SERIAL #									

NP3978A01

PART NO.	ECI4A4P1				
U1	480	PH	3	HZ	60
I1	4.8	W/EXT. CHOKE			4.5
SERIAL #					



CD0006B03



NOTES:

1. INTERCHANGE ANY TWO LINE LEADS TO REVERSE ROTATION.
2. ACTUAL NUMBER OF INTERNAL PARALLEL CIRCUITS MAY VARY.

CD0006B03

REV. DESC: CHANGE LEAD COLORS TO BLUE WHITE ORANGE		
REV. LTR: A	VERSION: 01	TDR: 000001158598
FILE: \AAA\00252\917	REVISED: 11:01:03 01/19/2021	BY: ENMARSO
MTL: -	© □	

BALDOR - RELIANCE®

3PH, SV, 3 LEADS, WYE CONNECTED, ECS

SH 1 of 1