

ABB BALDOR RELIANCE III

Customer information packet

ECS100A4H2DC4

2HP, 1800RPM, 3PH, 60HZ, 143TC, 3524B, TEFC, F1

Class - None

Division - Not Applicable

Specifications

Enclosure	TEFC
Frame	143TC
Frame Material	Steel
Frequency	60.00 Hz
Haz Area Class and Group	None
Haz Area Division	Not Applicable
Motor Letter Type	Brushless Wound Field PM Rotor
Output @ Frequency	2.000 HP @ 60 HZ
Phase	3
Synchronous Speed @ Frequency	1800 RPM @ 60 HZ
Voltage @ Frequency	460.0 V @ 60 HZ
Agency Approvals	BLUETOOTH CULUS WEEE
Ambient Temperature	40 °C
Auxiliary Box	NO AUXILLARY BOX
Auxiliary Box Lead Termination	None
Base Indicator	No Mounting
Bearing Grease Type	Polyrex EM (-20F +300F)
Blower	None
Constant Torque Speed Range	6
Current @ Voltage	2.200 A @ 460.0 V
Design Code	-
Drip Cover	No Drip Cover
Duty Rating	CONT
Efficiency @ 100% Load	91.9 %
Electrically Isolated Bearing	Not Electrically Isolated
Feedback Device	NO FEEDBACK
Heater Indicator	No Heater
High Voltage Full Load Amps	2.2 a
Insulation Class	F
Inverter Code	03

Part Detail

Revision	C
Type	AC
Mech. spec.	35E5253
Base	
Status	PRD/A
Elec. spec.	35WGG963
Layout	35LYE5253
Eff. date	10-31-2024
CD Diagram	CD0006B03
Poles	04
Leads	3#16 13" LONG LEADS Y
Proprietary	False
Created date	05-07-2024

KVA Code	-
Lifting Lugs	No Lifting Lugs
Locked Bearing Indicator	Locked Bearing
Motor Lead Quantity/Wire Size	3 @ 16 AWG
Motor Lead Termination	Flying Leads
Motor Standards	NEMA
Motor Type	3524B
Mounting Arrangement	F1
Number of Poles	4
Overall Length	17.72 IN
Power Factor	93
Product Family	General Purpose
Pulley Face Code	C-Face
Rodent Screen	None
Service Factor	1.00
Shaft Diameter	0.875 IN
Shaft Ground Indicator	Shaft Grounding
Shaft Rotation	Reversible
Speed	1800 rpm
Speed Code	Single Speed
Starting Method	Direct on line
Thermal Device - Bearing	None
Thermal Device - Winding	None
Vibration Sensor Indicator	No Vibration Sensor
Winding Thermal 1	None
Winding Thermal 2	None

Nameplate

NP3968A01A01									
CAT.NO.	ECS100A4H2DC4								
SPEC.	35E5253G963								
FRAME	143TC		ENCL.	TEFC	IP	54			
HP	2	40	C AMB	CONT					
NOM. EFF.	91.9	PF	93	SF	1				
VOLTS	460		FLA	2.2					
RPM	1800		RPM-MAX	4000					
HZ	60		PH.	3	CLASS	F			
BEMF (V)	296		RS (OHMS)	11.7					
LD (MH)	78.9		LQ (MH)	406					
VPWM	CHP	60	TO	133					
CT	6	TO	60	VT	6	TO	60		
MATCHED INV	ECI4A4P1								
DE	6205		ODE	6203					
SERIAL #									

NP3978A01

PART NO.	ECI4A4P1				
U1	480	PH	3	HZ	60
I1	2.9	W/EXT. CHOKE			2.7
SERIAL #					

Volts	460	Max RPM	4000	Conn Diag.	CD0006B03	Leads	3
Amps	2.4	Max Amps		Cs Diagram	CS1126	BEMF	296
HP	2	VFD#	ECIN4A2P2			LD	78.9
RPM	1800	S.F.	1.00			LQ	406
Phase/Hz	3/60	Rating	40C AMB-CONT			Rs	11.7433 Meas. L-L

60034-2-3 Motor Performance at Standardized Operating Points

	RPM	% Speed	LB-FT	% Torque	HP	Efficiency	Loss (% FL)	Watts Loss (W)
P1	1627	90%	5.8	100%	1.8	91.9	7.92%	120
P2	903	50%	5.8	100%	1.0	88.1	6.71%	101
P3	453	25%	5.8	100%	0.5	81.6	5.62%	85
P4	1624	90%	2.9	50%	0.9	92.2	3.77%	57
P5	903	50%	2.9	50%	0.5	90.5	2.61%	39
P6	903	50%	1.5	25%	0.3	91.1	1.22%	18
P7	454	25%	1.5	25%	0.1	88.8	0.79%	12

61800-9-2 PDS Performance at Reference Operating Points

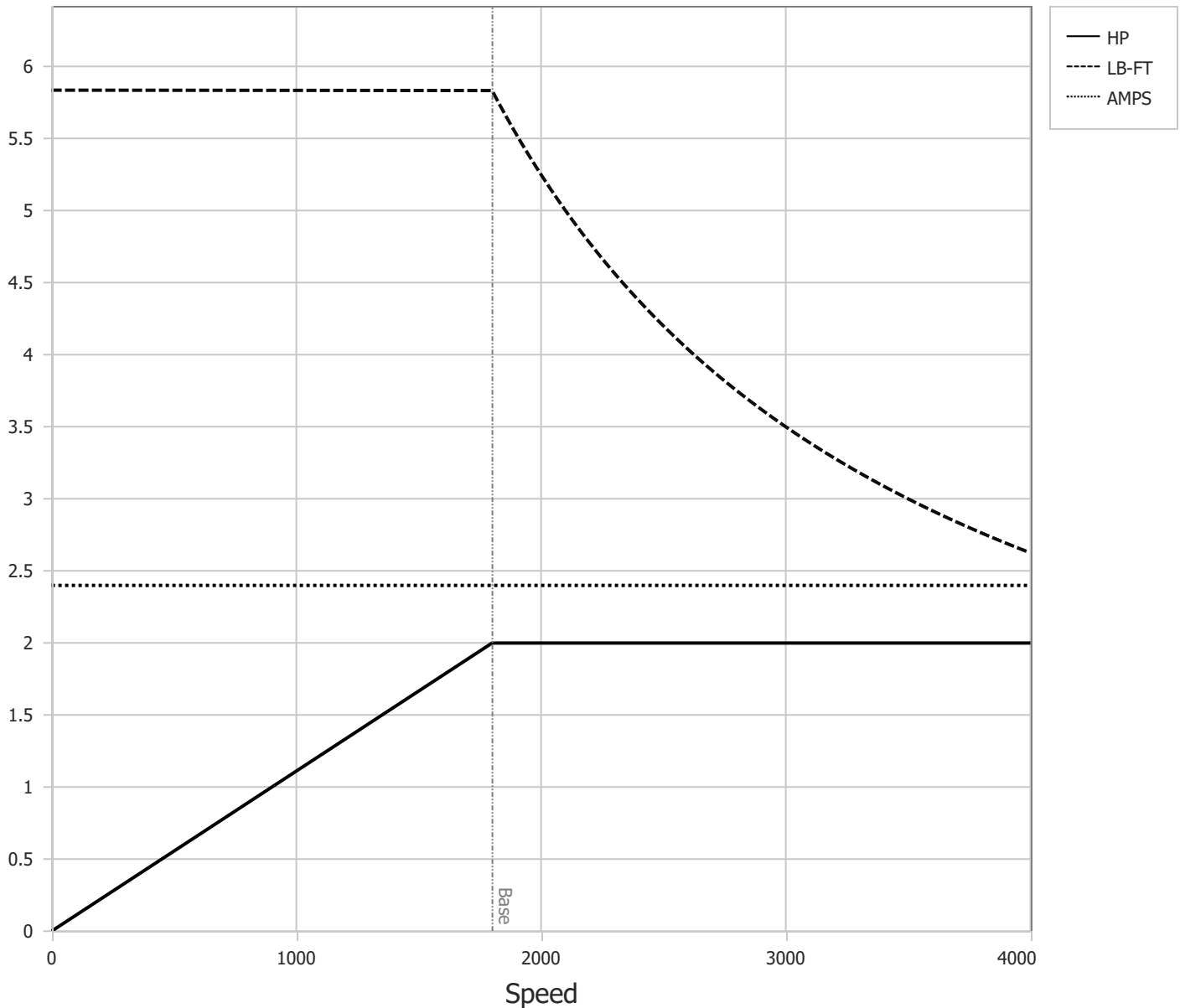
	RPM	% Speed	LB-FT	% Torque	HP	System Efficiency	Loss (% FL)	Watts Loss (W)
P1	1812	100%	5.8	100%	2.0	89.2	12.04%	182
P2	903	50%	5.8	100%	1.0	84.1	9.39%	142
P3	302	17%	5.8	100%	0.3	68.1	7.78%	117
P4	1804	100%	2.9	50%	1.0	89.1	6.06%	91
P5	903	50%	2.9	50%	0.5	84.6	4.53%	68
P6	302	17%	2.9	50%	0.2	69.3	3.67%	55
P7	903	50%	1.5	25%	0.3	81.9	2.75%	42
P8	302	17%	1.5	25%	0.1	65.2	2.21%	33

Points not taken in certified order.

BALDOR • RELIANCE	DR By: <u>R & D</u>	AC MOTOR PERFORMANCE CURVES	35WGG963 35E5209G963 Test - 110893
	CK By: <u>USTOSAN</u>		
	APP By: <u>USJAROB1</u>		
	Date: <u>07/03/2024</u>		

Volts	460	Max RPM	4000	Conn Diag.	CD0006B03	Leads	3
Amps	2.4	Max Amps		Cs Diagram	CS1126	BEMF	296
HP	2	VFD #	ECIN4A2P2			LD	78.9
RPM	1800	S.F.	1.00			LQ	406
Phase/Hz	3/60	Rating	40C AMB-CONT			Rs	11.7433 Meas L-L

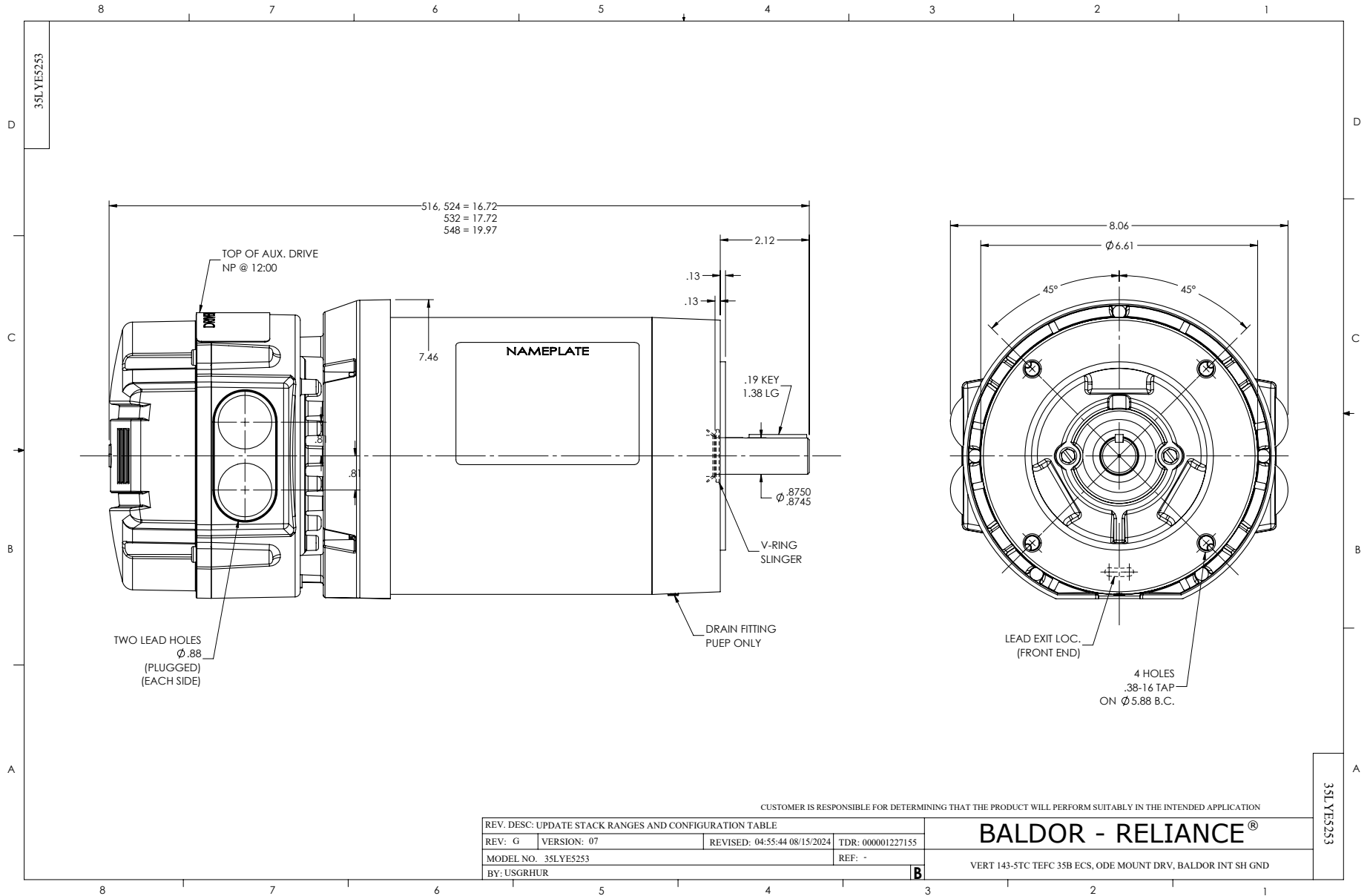
Constant Duty Operating Range



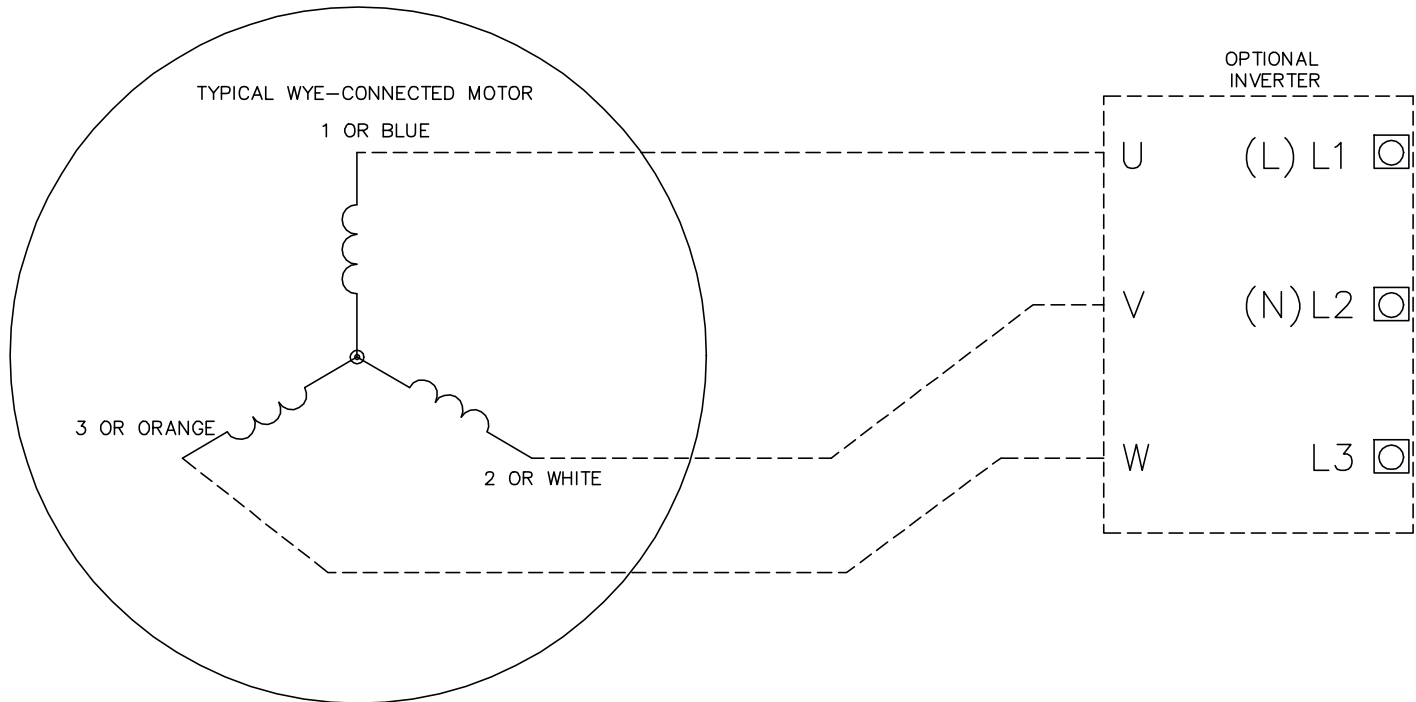
DR By: R & D
 CK By: USTOSAN
 APP By: USJAROB1
 Date: 07/03/2024

**AC MOTOR
PERFORMANCE
CURVES**

35WGG963
 35E5209G963
 Test - 110893



CD0006B03



NOTES:

1. INTERCHANGE ANY TWO LINE LEADS TO REVERSE ROTATION.
2. ACTUAL NUMBER OF INTERNAL PARALLEL CIRCUITS MAY VARY.

CD0006B03

REV. DESC: CHANGE LEAD COLORS TO BLUE WHITE ORANGE		
REV. LTR: A	VERSION: 01	TDR: 000001158598
FILE: \AAA\00252\917	REVISED: 11:01:03 01/19/2021	BY: ENMARSO
MTL: -	© □	

BALDOR - RELIANCE®

3PH, SV, 3 LEADS, WYE CONNECTED, ECS

SH 1 of 1