

# **ABB BALDOR RELIANCE III**

---

## **Customer information packet** ECS100A2H5EC4

5HP, 1800RPM, 3PH, 60HZ, 184TC, 3632B, TEFC, F1

Class - None

Division - Not Applicable

**Specifications**

<b>Enclosure</b>	TEFC
<b>Frame</b>	184TC
<b>Frame Material</b>	Steel
<b>Frequency</b>	60.00 Hz
<b>Haz Area Class and Group</b>	None
<b>Haz Area Division</b>	Not Applicable
<b>Motor Letter Type</b>	Three Phase
<b>Output @ Frequency</b>	5.000 HP @ 60 HZ
<b>Phase</b>	3
<b>Synchronous Speed @ Frequency</b>	1800 RPM @ 60 HZ
<b>Voltage @ Frequency</b>	230.0 V @ 60 HZ
<b>Agency Approvals</b>	UL WEEE
<b>Ambient Temperature</b>	40 °C
<b>Auxiliary Box</b>	NO AUXILLARY BOX
<b>Auxiliary Box Lead Termination</b>	None
<b>Base Indicator</b>	No Mounting
<b>Bearing Grease Type</b>	Polyrex EM (-20F +300F)
<b>Blower</b>	None
<b>Constant Torque Speed Range</b>	6
<b>Current @ Voltage</b>	10.500 A @ 230.0 V
<b>Drip Cover</b>	No Drip Cover
<b>Duty Rating</b>	CONT
<b>Efficiency @ 100% Load</b>	93.7 %
<b>Electrically Isolated Bearing</b>	Not Electrically Isolated
<b>Feedback Device</b>	NO FEEDBACK
<b>Heater Indicator</b>	No Heater
<b>High Voltage Full Load Amps</b>	10.5 a
<b>Insulation Class</b>	F
<b>Inverter Code</b>	Inverter Duty
<b>IP Rating</b>	NONE
<b>Lifting Lugs</b>	Standard Lifting Lugs

**Part Detail**

<b>Revision</b>	H
<b>Type</b>	AC
<b>Mech. spec.</b>	
<b>Base</b>	
<b>Status</b>	PRD/A
<b>Elec. spec.</b>	36WGA0024
<b>Layout</b>	36LYT290
<b>Eff. date</b>	01-16-2026
<b>CD Diagram</b>	CD0006B03
<b>Poles</b>	04
<b>Leads</b>	3#14 15" LONG LEADS
<b>Proprietary</b>	False
<b>Created date</b>	09-28-2020

<b>Locked Bearing Indicator</b>	Locked Bearing
<b>Motor Lead Termination</b>	Flying Leads
<b>Motor Standards</b>	NEMA
<b>Motor Type</b>	3632B
<b>Mounting Arrangement</b>	F1
<b>Number of Poles</b>	4
<b>Overall Length</b>	22.25 IN
<b>Power Factor</b>	97
<b>Product Family</b>	General Purpose
<b>Pulley Face Code</b>	C-Face
<b>Rodent Screen</b>	None
<b>Service Factor</b>	1.00
<b>Shaft Diameter</b>	1.125 IN
<b>Shaft Ground Indicator</b>	Shaft Grounding
<b>Shaft Rotation</b>	Reversible
<b>Speed</b>	1800 rpm
<b>Speed Code</b>	Single Speed
<b>Starting Method</b>	Direct on line
<b>Thermal Device - Bearing</b>	None
<b>Thermal Device - Winding</b>	None
<b>Vibration Sensor Indicator</b>	No Vibration Sensor
<b>Winding Thermal 1</b>	None
<b>Winding Thermal 2</b>	None

Volts	230	Max RPM	4000	Conn Diag.	CD0006B03	Leads	3
Amps	10.5	Max Amps		Cs Diagram	CS1127	BEMF	126
HP	5	VFD#	ECIN2A10P5			LD	13.5
RPM	1800	S.F.	1.00			LQ	47.8
Phase/Hz	3/60	Rating	40C AMB-CONT			Rs	0.8309 Meas. L-L

**60034-2-3 Motor Performance at Standardized Operating Points**

	RPM	% Speed	LB-FT	% Torque	HP	Efficiency	Loss (% FL)	Watts Loss (W)
P1	1630	90%	14.6	100%	4.5	93.3	6.49%	245
P2	904	50%	14.6	100%	2.5	90.6	5.17%	195
P3	452	25%	14.6	100%	1.3	85.0	4.39%	166
P4	1628	90%	7.3	50%	2.3	93.3	3.24%	122
P5	905	50%	7.3	50%	1.3	91.7	2.26%	85
P6	905	50%	3.7	25%	0.6	91.3	1.19%	45
P7	453	25%	3.6	25%	0.3	88.6	0.80%	30

**61800-9-2 PDS Performance at Reference Operating Points**

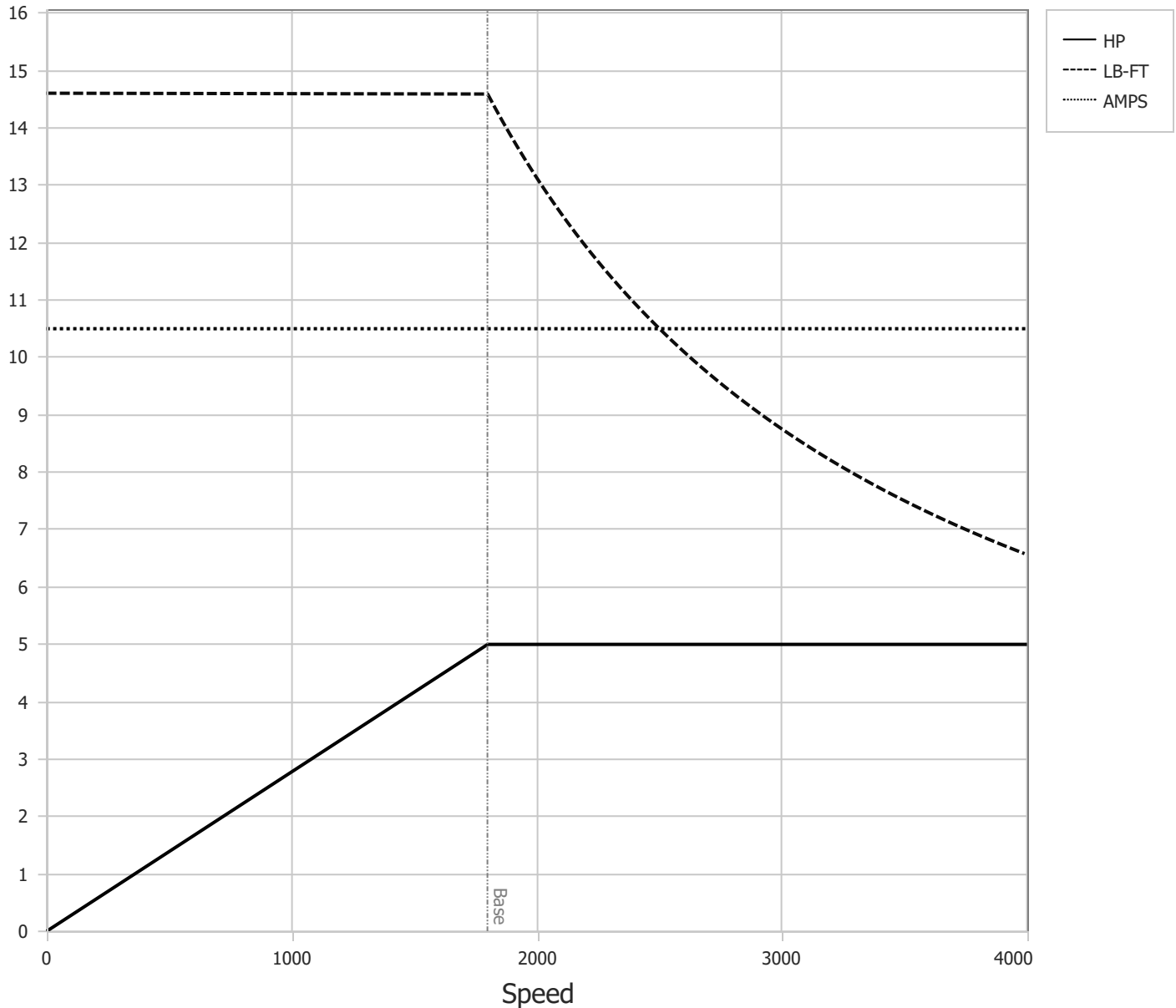
	RPM	% Speed	LB-FT	% Torque	HP	System Efficiency	Loss (% FL)	Watts Loss (W)
P1	1810	100%	14.6	100%	5.0	90.8	10.11%	382
P2	904	50%	14.6	100%	2.5	86.0	8.09%	305
P3	301	17%	14.6	100%	0.8	70.7	6.86%	259
P4	1811	100%	7.3	50%	2.5	90.8	5.06%	191
P5	905	50%	7.3	50%	1.3	86.6	3.85%	145
P6	301	17%	7.3	50%	0.4	73.0	3.06%	115
P7	905	50%	3.7	25%	0.6	85.2	2.16%	82
P8	302	17%	3.6	25%	0.2	72.2	1.59%	60

Points not taken in certified order.

<b>BALDOR • RELIANCE</b>	DR By:	<u>R &amp; D</u>	<b>AC MOTOR PERFORMANCE CURVES</b>	<b>36WGA0024</b> 36-0000-0618 Test - 111814
	CK By:	<u>USTOSAN</u>		
	APP By:	<u>USWEQUA1</u>		
	Date:	<u>01/17/2025</u>		

Volts	230	Max RPM	4000	Conn Diag.	CD0006B03	Leads	3
Amps	10.5	Max Amps		Cs Diagram	CS1127	BEMF	126
HP	5	VFD #	ECIN2A10P5			LD	13.5
RPM	1800	S.F.	1.00			LQ	47.8
Phase/Hz	3/60	Rating	40C AMB-CONT			Rs	0.8309 Meas L-L

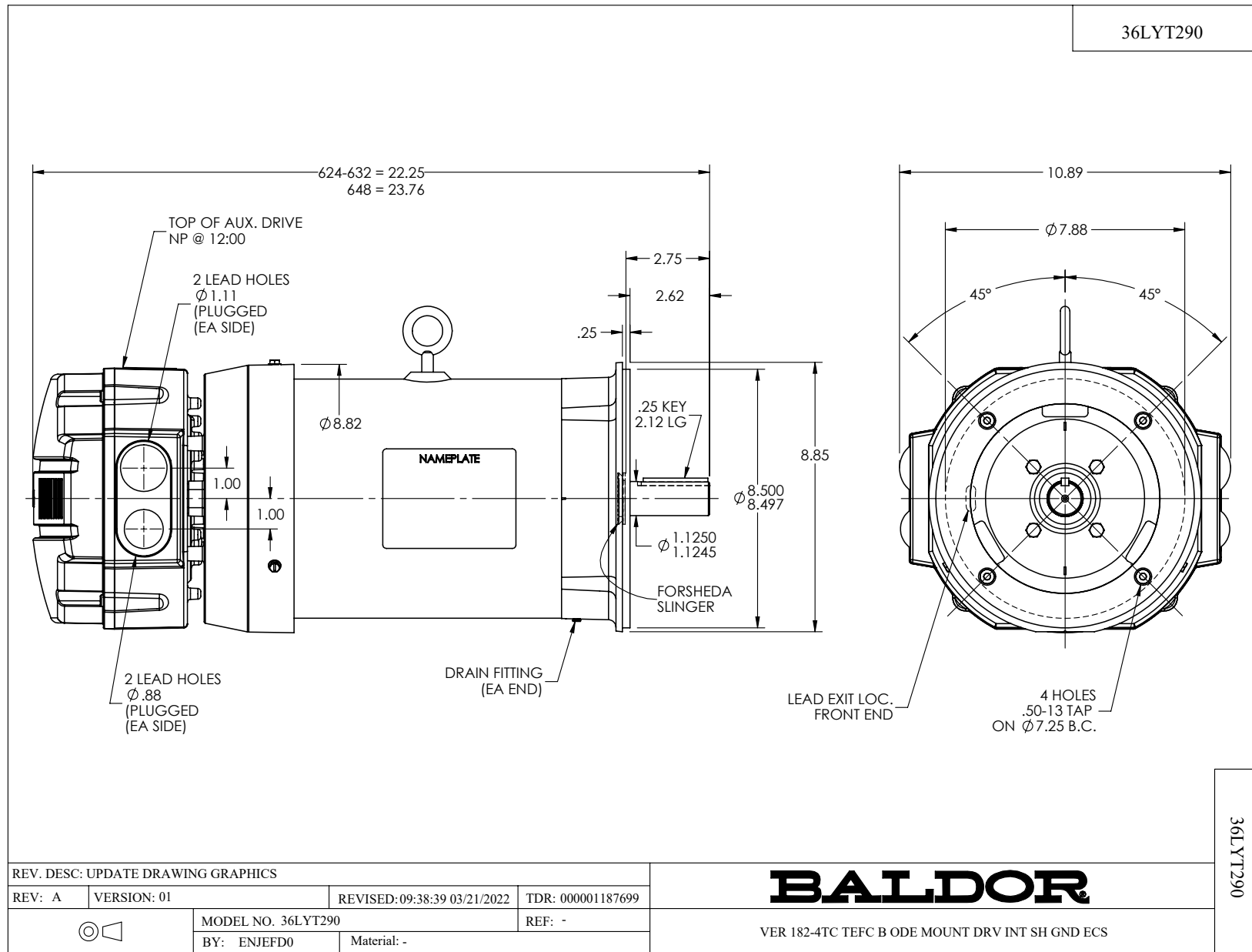
Constant Duty Operating Range



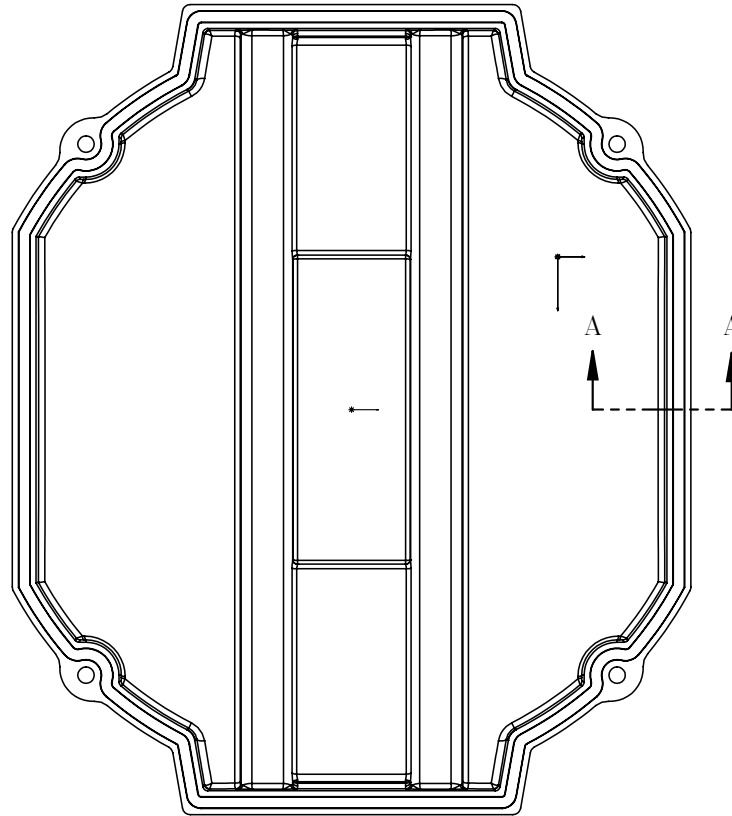
DR By: R & D  
 CK By: USTOSAN  
 APP By: USWEQUA1  
 Date: 01/17/2025

**AC MOTOR  
PERFORMANCE  
CURVES**

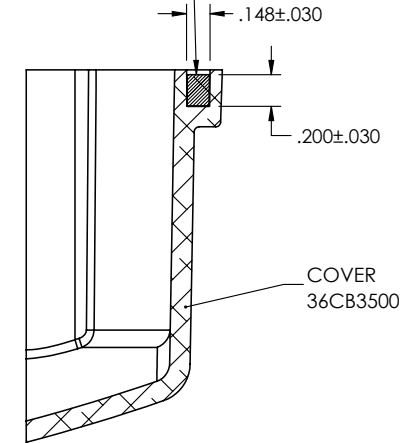
**36WGA0024**  
 36-0000-0618  
 Test - 111814



36CB3500A00



MATERIAL: RAMPF, RAKU-PUR 32-3280-51L



SECTION A-A

36CB3500A00

REV. DESC: UPDATE MATERIAL

REV: A	VERSION: 01	REVISED: 10:45:08 03/29/2019	TDR: 000001101646
--------	-------------	------------------------------	-------------------



MODEL NO. 36CB3500A00

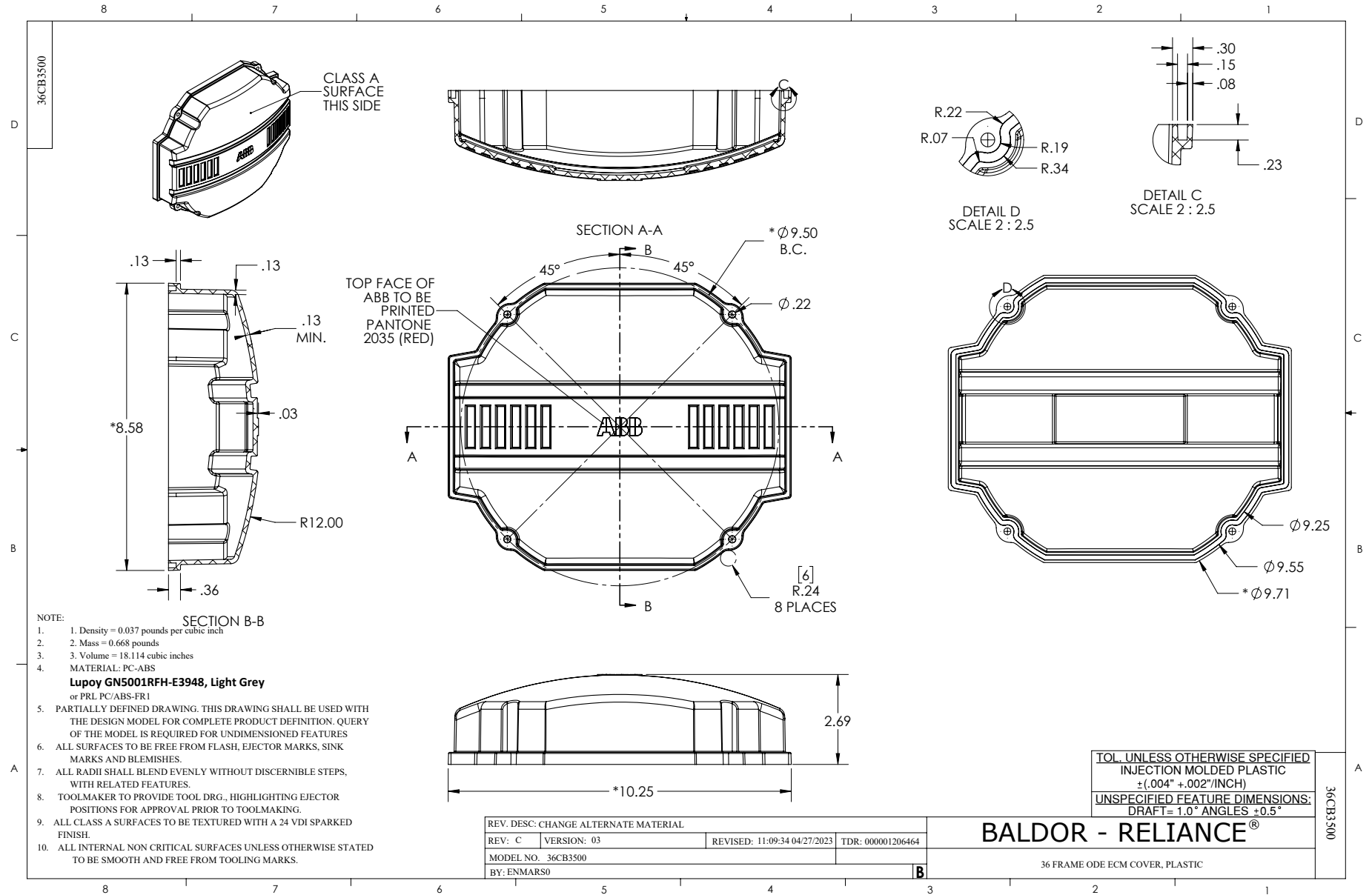
REF: -

BY: ENMARS0

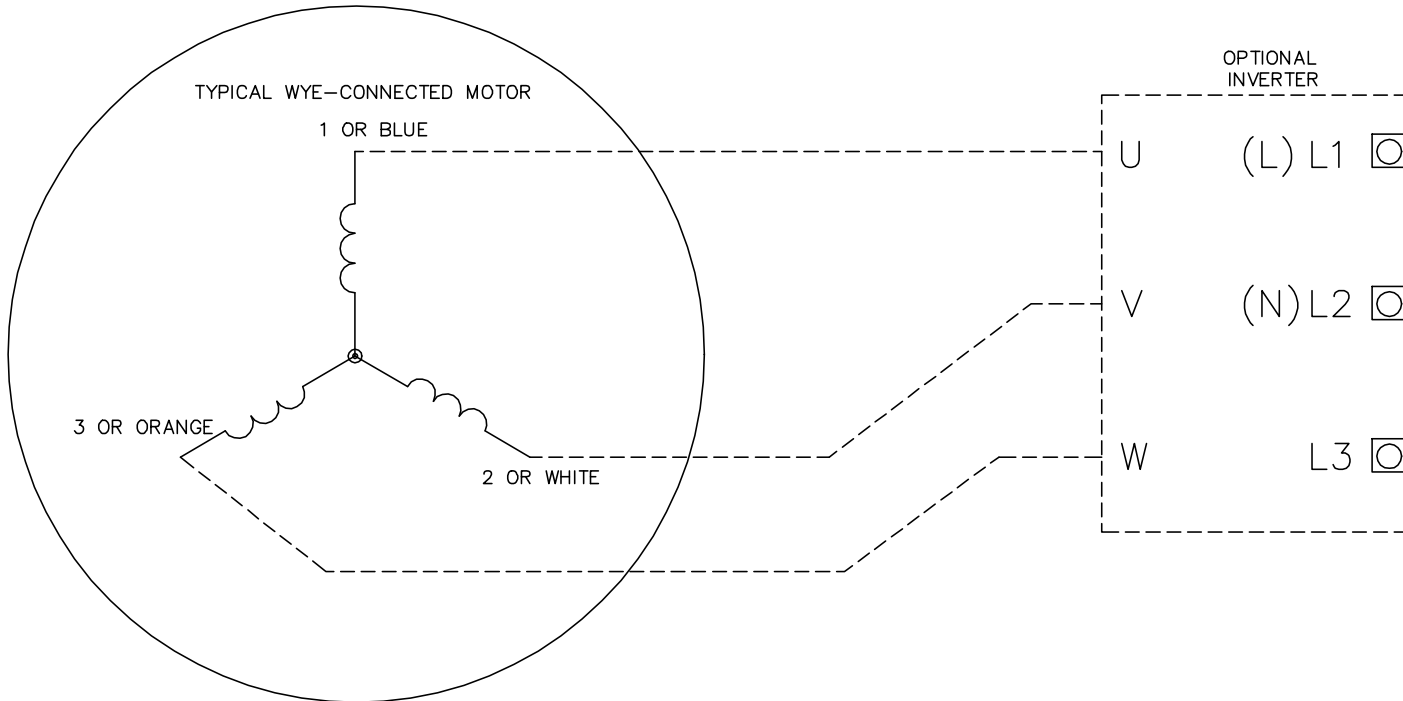
Material: -

**BALDOR - RELIANCE®**

36 FRAME ODE ECM COVER WITH FOAM SEAL



CD0006B03



**NOTES:**

1. INTERCHANGE ANY TWO LINE LEADS TO REVERSE ROTATION.
2. ACTUAL NUMBER OF INTERNAL PARALLEL CIRCUITS MAY VARY.

REV. DESC: CHANGE LEAD COLORS TO BLUE WHITE ORANGE		
REV. LTR: A	VERSION: 01	TDR: 000001158598
FILE: \AAA\00252\917	REVISED: 11:01:03 01/19/2021	BY: ENMARSO
MTL: -	© □	

**BALDOR - RELIANCE®**

3PH, SV, 3 LEADS, WYE CONNECTED, ECS

SH 1 of 1

CD0006B03