

ABB BALDOR RELIANCE III

Customer information packet

ECS100A1H1DB4

1HP, 1800RPM, 3PH, 60HZ, 145TC, 3516B, TEFC, F1

Class - None

Division - Not Applicable

Specifications

Enclosure	TEFC
Frame	145TC
Frame Material	Steel
Frequency	60.00 Hz
Haz Area Class and Group	None
Haz Area Division	Not Applicable
Motor Letter Type	Brushless Wound Field PM Rotor
Output @ Frequency	1.000 HP @ 60 HZ
Phase	3
Synchronous Speed @ Frequency	1800 RPM @ 60 HZ
Voltage @ Frequency	230.0 V @ 60 HZ
Agency Approvals	BLUETOOTH CULUS WEEE
Ambient Temperature	40 °C
Auxiliary Box	NO AUXILLARY BOX
Auxiliary Box Lead Termination	None
Base Indicator	Rigid
Bearing Grease Type	Polyrex EM (-20F +300F)
Blower	None
Constant Torque Speed Range	6
Current @ Voltage	2.500 A @ 230.0 V
Design Code	-
Drip Cover	No Drip Cover
Duty Rating	CONT
Efficiency @ 100% Load	91.0 %
Electrically Isolated Bearing	Not Electrically Isolated
Feedback Device	NO FEEDBACK
Heater Indicator	No Heater
High Voltage Full Load Amps	2.5 a
Insulation Class	F
Inverter Code	03

Part Detail

Revision	C
Type	AC
Mech. spec.	35E5351
Base	
Status	PRD/A
Elec. spec.	35WGG932
Layout	35LYE5351
Eff. date	10-31-2024
CD Diagram	CD0006B03
Poles	04
Leads	3#14 13" LONG LEADS Y
Proprietary	False
Created date	05-10-2024

KVA Code	-
Lifting Lugs	No Lifting Lugs
Locked Bearing Indicator	Locked Bearing
Motor Lead Quantity/Wire Size	3 @ 14 AWG
Motor Lead Termination	Flying Leads
Motor Standards	NEMA
Motor Type	3516B
Mounting Arrangement	F1
Number of Poles	4
Overall Length	17.71 IN
Power Factor	98
Product Family	General Purpose
Pulley Face Code	C-Face
Rodent Screen	None
Service Factor	1.00
Shaft Diameter	0.875 IN
Shaft Ground Indicator	Shaft Grounding
Shaft Rotation	Reversible
Speed	1800 rpm
Speed Code	Single Speed
Starting Method	Direct on line
Thermal Device - Bearing	None
Thermal Device - Winding	None
Vibration Sensor Indicator	No Vibration Sensor
Winding Thermal 1	None
Winding Thermal 2	None

Nameplate

NP3968A01A01									
CAT.NO.	ECS100A1H1DB4								
SPEC.	35E5351G932G2								
FRAME	145TC		ENCL.	TEFC	IP	54			
HP	1	40	C AMB		CONT				
NOM. EFF.	91	PF	98	SF	1				
VOLTS	230		FLA	2.5					
RPM	1800		RPM-MAX	3000					
HZ	60		PH.	3	CLASS	F			
BEMF (V)	135		RS (OHMS)	4.9					
LD (MH)	30.8		LQ (MH)	135					
VPWM	CHP	60	TO	133					
CT	6	TO	60	VT	6	TO	60		
MATCHED INV	ECI1A3P2								
DE	6205		ODE	6203					
SERIAL #									

NP3978A01

PART NO.	ECI1A3P2				
U1	120	PH	1	HZ	60
I1	9.6	W/EXT. CHOKE			9
SERIAL #					

Volts	120	Max RPM	4000	Conn Diag.	CD0006B03	Leads	3
Amps	2.4	Max Amps		Cs Diagram	CS1127	BEMF	135
HP	1	VFD#	ECIN1A3P2			LD	29.3
RPM	1800	S.F.	1.00			LQ	136
Phase/Hz	3/60	Rating	40C AMB-CONT			Rs	4.8894 Meas. L-L

60034-2-3 Motor Performance at Standardized Operating Points

	RPM	% Speed	LB-FT	% Torque	HP	Efficiency	Loss (% FL)	Watts Loss (W)
P1	1618	90%	2.9	100%	0.9	89.8	10.17%	77
P2	900	50%	2.9	100%	0.5	85.4	8.48%	64
P3	450	25%	2.9	100%	0.2	78.7	6.68%	50
P4	1620	90%	1.5	50%	0.5	89.3	5.36%	40
P5	900	50%	1.5	50%	0.2	87.3	3.61%	27
P6	900	50%	0.7	25%	0.1	86.0	2.03%	15
P7	450	25%	0.7	25%	0.1	83.2	1.24%	9

61800-9-2 PDS Performance at Reference Operating Points

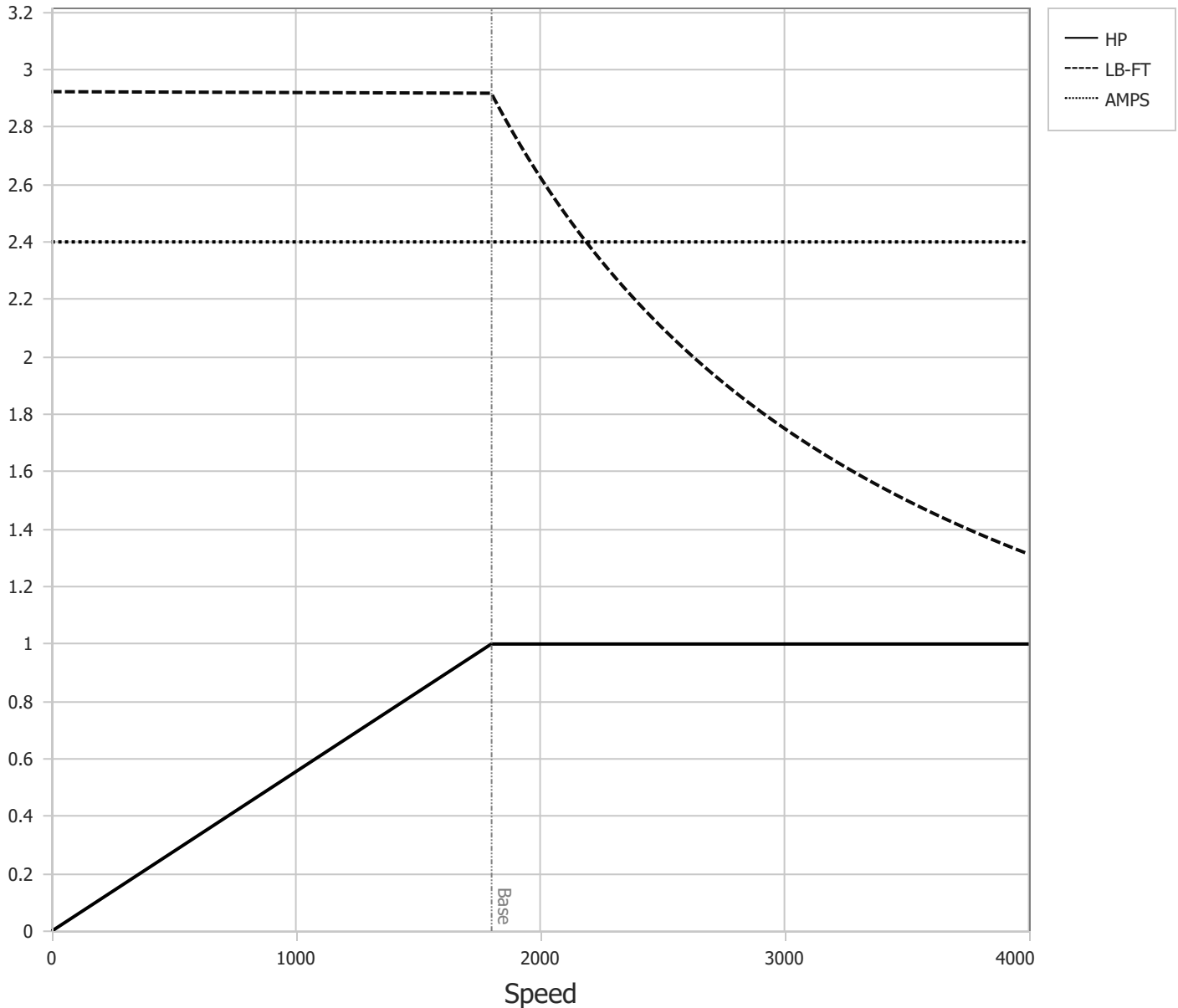
	RPM	% Speed	LB-FT	% Torque	HP	System Efficiency	Loss (% FL)	Watts Loss (W)
P1	1801	100%	2.9	100%	1.0	86.8	15.08%	114
P2	900	50%	2.9	100%	0.5	81.0	11.57%	87
P3	299	17%	2.9	100%	0.2	65.1	8.79%	66
P4	1799	100%	1.5	50%	0.5	85.7	8.23%	62
P5	900	50%	1.5	50%	0.2	82.0	5.43%	41
P6	300	17%	1.5	50%	0.1	67.1	4.03%	30
P7	900	50%	0.7	25%	0.1	78.9	3.32%	25
P8	300	17%	0.7	25%	0.0	64.6	2.25%	17

Points not taken in certified order.

BALDOR • RELIANCE	DR By:	<u>R & D</u>	AC MOTOR PERFORMANCE CURVES	35WGG932 35-0000-1616 Test - 111671
	CK By:	<u>USBIBAK</u>		
	APP By:	<u>USWEQUA1</u>		
	Date:	<u>12/07/2024</u>		

Volts	120	Max RPM	4000	Conn Diag.	CD0006B03	Leads	3
Amps	2.4	Max Amps		Cs Diagram	CS1127	BEMF	135
HP	1	VFD #	ECIN1A3P2			LD	29.3
RPM	1800	S.F.	1.00			LQ	136
Phase/Hz	3/60	Rating	40C AMB-CONT			Rs	4.8894 Meas L-L

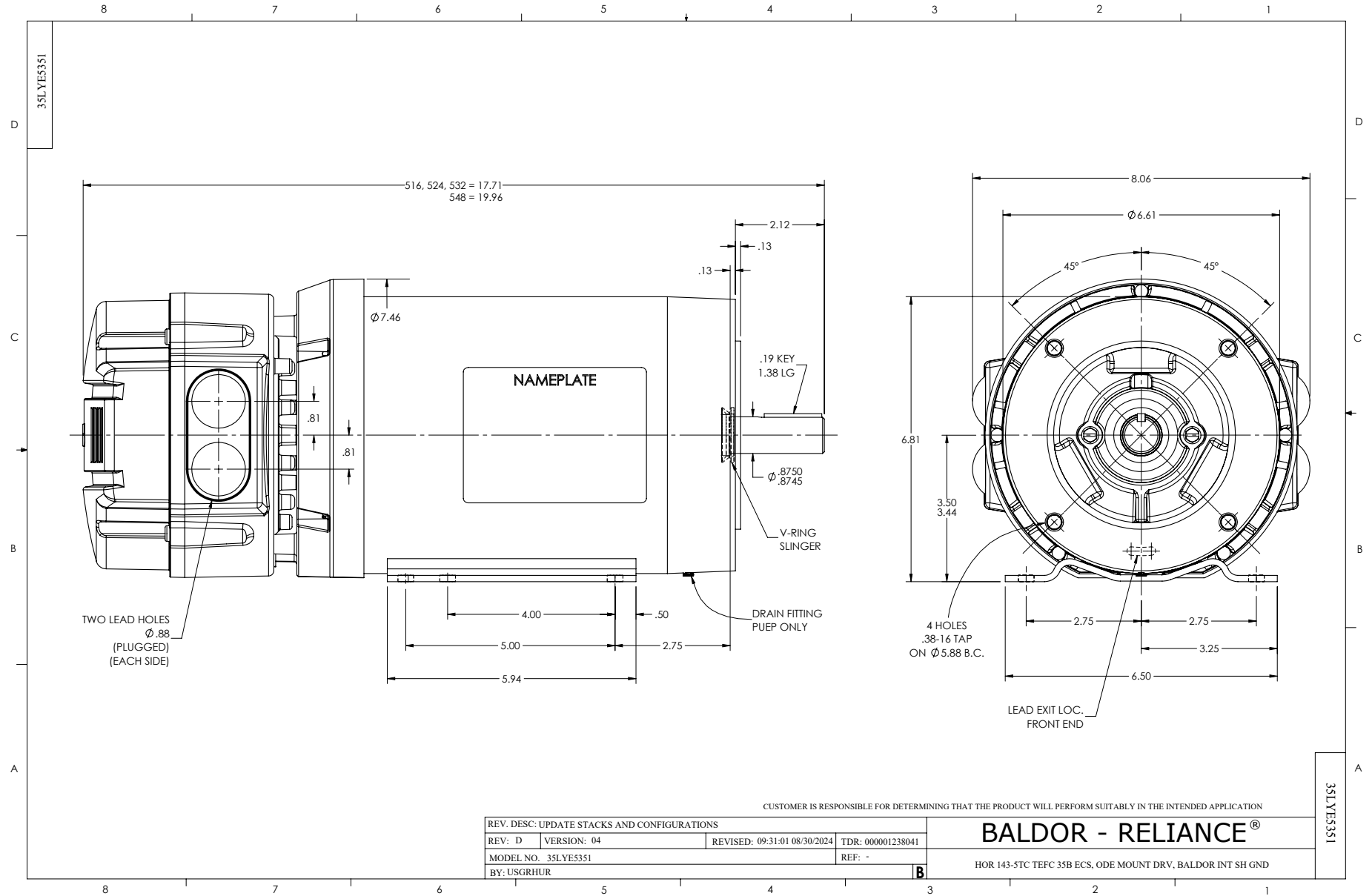
Constant Duty Operating Range



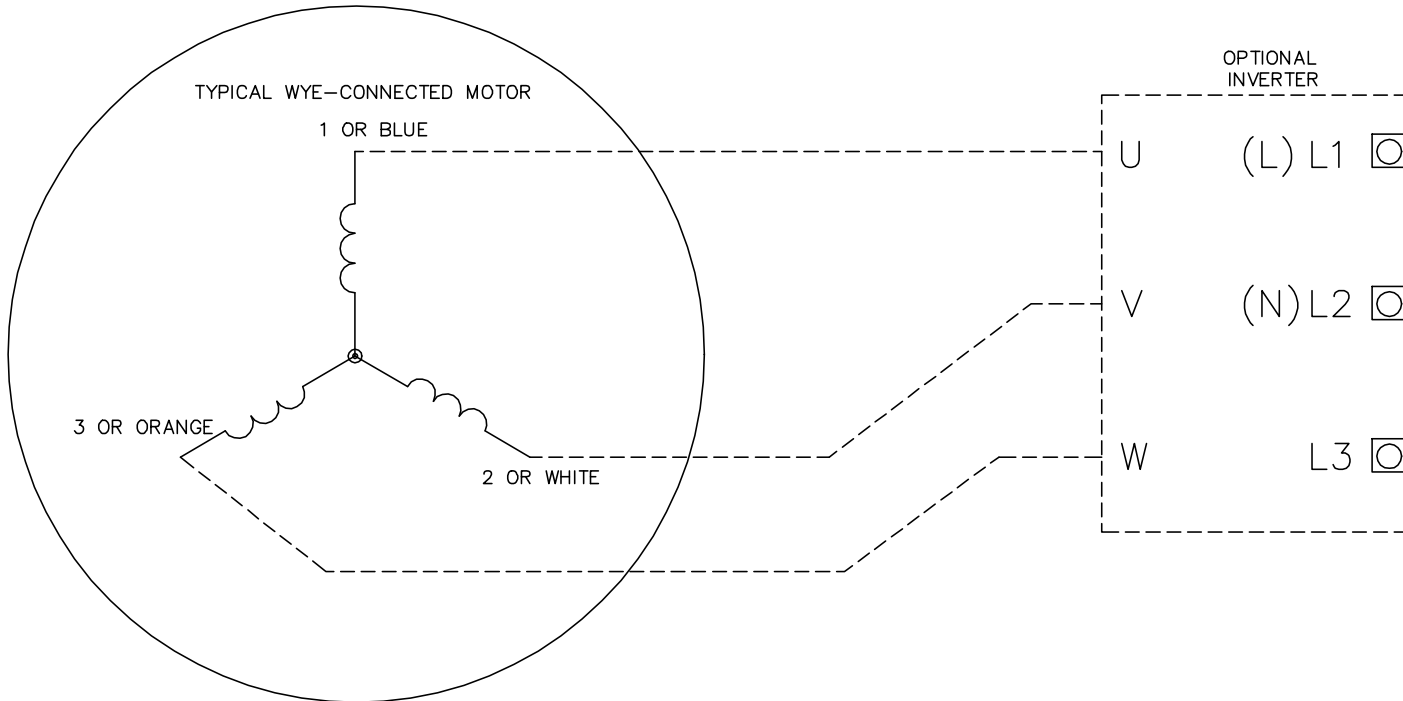
DR By: R & D
 CK By: USBIBAK
 APP By: USWEQUA1
 Date: 12/07/2024

**AC MOTOR
PERFORMANCE
CURVES**

35WGG932
 35-0000-1616
 Test - 111671



CD0006B03



NOTES:

1. INTERCHANGE ANY TWO LINE LEADS TO REVERSE ROTATION.
2. ACTUAL NUMBER OF INTERNAL PARALLEL CIRCUITS MAY VARY.

REV. DESC: CHANGE LEAD COLORS TO BLUE WHITE ORANGE		
REV. LTR: A	VERSION: 01	TDR: 000001158598
FILE: \AAA\00252\917	REVISED: 11:01:03 01/19/2021	BY: ENMARSO
MTL: -	© □	

BALDOR - RELIANCE®

3PH, SV, 3 LEADS, WYE CONNECTED, ECS

SH 1 of 1

CD0006B03