

BALDOR • RELIANCE

Customer information packet

ECR9604TR

60HP, 1785RPM, 3PH, 60HZ, 364T, A3662M, TEFC, F

Class - None

Division - Not Applicable

Specifications

| | |
|-------------------------------|---|
| Enclosure | TEFC |
| Frame | 364T |
| Frame Material | Iron |
| Frequency | 60.00 Hz |
| Haz Area Class and Group | None |
| Haz Area Division | Not Applicable |
| Motor Letter Type | Three Phase |
| Output @ Frequency | 60.000 HP @ 60 HZ |
| Phase | 3 |
| Synchronous Speed @ Frequency | 1800 RPM @ 60 HZ |
| Voltage @ Frequency | 230.0 V @ 60 HZ 460.0 V @ 60 HZ |
| Agency Approvals | CCSAUSEEV NEMA PREMIUM NEMA_PREMIUM UR |
| Ambient Temperature | 40 °C |
| Auxiliary Box | NO AUXILLARY BOX |
| Base Indicator | Rigid |
| Bearing Grease Type | Mobil SHC 220 (Athens Only) |
| Constant Torque Speed Range | 6-60 |
| Current @ Voltage | 71.000 A @ 460.0 V 142.000 A @ 230.0 V |
| Design Code | A |
| Drip Cover | No Drip Cover |
| Duty Rating | CONT |
| Efficiency @ 100% Load | 95.0 % |
| Feedback Device | NO FEEDBACK |
| Heater Indicator | No Heater |
| High Voltage Full Load Amps | 71.0 a |
| Insulation Class | F |
| Inverter Code | Inverter Ready |

Part detail

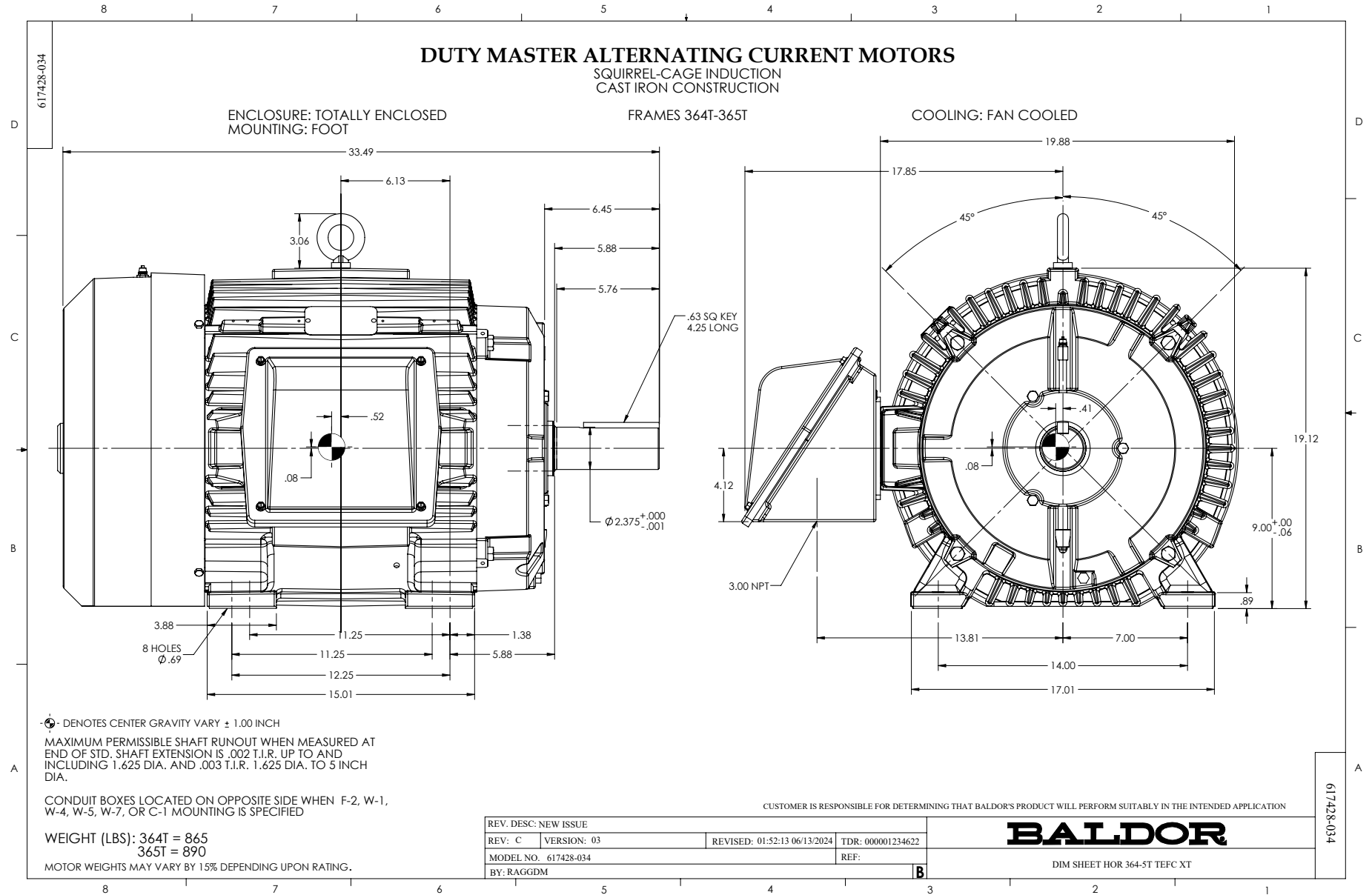
| | |
|--------------|------------|
| Revision | R |
| Type | AC |
| Mech. spec. | |
| Base | |
| Status | PRD/A |
| Elec. spec. | A36WG4074 |
| Layout | 617428-034 |
| Eff. date | 02-09-2026 |
| CD Diagram | 416820-002 |
| Poles | 04 |
| Leads | 3#4,6#6 |
| Proprietary | False |
| Created date | 02-03-2015 |

| | |
|--------------------------------------|--------------------|
| KVA Code | H |
| Lifting Lugs | No Lifting Lugs |
| Max Speed | 2700 rpm |
| Motor Lead Quantity/Wire Size | 3 @ 4 AWG |
| Motor Standards | NEMA |
| Motor Type | A3662M |
| Mounting Arrangement | F1 |
| Number of Poles | 4 |
| Overall Length | 33.49 IN |
| Power Factor | 83 |
| Product Family | Crusher / Chipper |
| Pulley End Bearing Type | Ball |
| Pulley Face Code | Standard |
| Service Factor | 1.25 |
| Shaft Diameter | 2.374 IN |
| Shaft Ground Indicator | No Shaft Grounding |
| Shaft Rotation | Reversible |
| Shaft Slinger Indicator | No Slinger |
| Speed | 1785 rpm |
| Speed Code | Single Speed |
| Starting Method | Direct on line |
| Thermal Device - Bearing | None |
| Thermal Device - Winding | None |

Nameplate

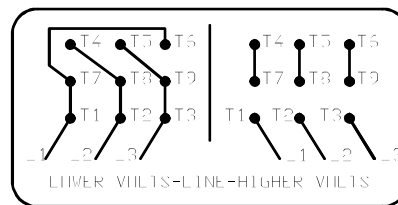
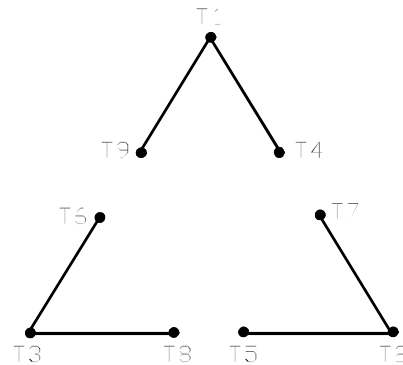
NP3980LUA

| | | | | | | | | | | | | | |
|------------------|----------------------------|-------------------|---------------|----------------------|-------------|---------------|-------------|------------|------------|------------|----------------------|-----------|-------|
| CAT # | ECR9604TR | | SER | | | CC | 010A | | | | | | |
| SPEC | P36G3503 | | RATING | 40C AMB-CONT | | | | | | | | | |
| HZ | VOLTS | | AMPS | | RPM | HP | CODE | SF | DES | PF | NEMA NOM. EFF | | |
| 60 | 230/460 | | 142/71 | | 1785 | 60 | H | 1.25 | A | 83 % | 95 % | % | |
| | - | | | | | | | | | % | | % | |
| PH | 3 | CL | F | MAX CORR KVAR | | 17.3 | | | | | | | |
| BRG | DE | NU313 | ODE | 6313 | ENCL | TEFC | FR | 364T | 55 | | | | |
| GREASE | MOBIL SHC 220 | | | | | MTR WT | 892 | LBS | | | | | |
| USABLE AT | 50HZ 50HP 190/380V 144/72A | | | | | SF1.0 | | | | | | | |
| INV READY | 1.0 SF VPWM | CT | 10-60 | HZ | 6:1 | VT | 0-60 | HZ | 1000:1 | CHP | 60-90 | HZ | 1.5:1 |
| MAX RPM | 2700 | SFA 178/89 | | | | | | | | | | | |



416820-002

A-C MOTOR
 CONNECTION DIAGRAM
 STANDARD 9 LEAD DELTA-CONNECTED



(N.P. 1575-B)

416820-002

| | | |
|---|------------------------------|-------------------|
| REV. DESC: FONT CHANGE FOR PDF SEARCHABLE | | |
| REV. LTR: A | VERSION: 01 | TDR: 000001009382 |
| FILE: \MGA\00000\661 | REVISED: 02:46:19 02/13/2020 | BY: MGHMTT |
| MTL: - | © □ | |

BALDOR - RELIANCE®

CONN DIAG - STANDARD 9 LEAD, DELTA-CONNECTED

SH 1 of 1