

# ABB BALDOR RELIANCE III

---

## Customer information packet

### ECR9254T

25HP, 1770RPM, 3PH, 60HZ, 284T, 1072M, TEFC, F1

Class - None

Division - Not Applicable

**Specifications**

<b>Enclosure</b>	TEFC
<b>Frame</b>	284T
<b>Frame Material</b>	Iron
<b>Frequency</b>	60.00 Hz
<b>Haz Area Class and Group</b>	None
<b>Haz Area Division</b>	Not Applicable
<b>Motor Letter Type</b>	Three Phase
<b>Output @ Frequency</b>	25.000 HP @ 60 HZ
<b>Phase</b>	3
<b>Synchronous Speed @ Frequency</b>	1800 RPM @ 60 HZ
<b>Voltage @ Frequency</b>	460.0 V @ 60 HZ 230.0 V @ 60 HZ
<b>Agency Approvals</b>	CCSA US CSA EEV NEMA PREMIUM NEMA_PREMIUM UR
<b>Ambient Temperature</b>	40 °C
<b>Auxiliary Box</b>	NO AUXILLARY BOX
<b>Auxiliary Box Lead Termination</b>	None
<b>Base Indicator</b>	Rigid
<b>Bearing Grease Type</b>	Polyrex EM (-20F +300F)
<b>Blower</b>	None
<b>Constant Torque Speed Range</b>	6
<b>Current @ Voltage</b>	68.000 A @ 208.0 V 62.000 A @ 230.0 V 31.000 A @ 460.0 V
<b>Design Code</b>	A
<b>Drip Cover</b>	No Drip Cover
<b>Duty Rating</b>	CONT
<b>Efficiency @ 100% Load</b>	93.6 %
<b>Electrically Isolated Bearing</b>	Not Electrically Isolated

**Part Detail**

<b>Revision</b>	V
<b>Type</b>	AC
<b>Mech. spec.</b>	10J907
<b>Base</b>	
<b>Status</b>	PRD/A
<b>Elec. spec.</b>	10WGZ352
<b>Layout</b>	10LYJ907
<b>Eff. date</b>	08-01-2023
<b>CD Diagram</b>	CD0180
<b>Poles</b>	04
<b>Leads</b>	9#10
<b>Proprietary</b>	False
<b>Created date</b>	01-14-2015

Enclosure Modification	Severe Duty Features
Feedback Device	NO FEEDBACK
Front Face Code	Standard
Front Shaft Indicator	None
Heater Indicator	No Heater
High Voltage Full Load Amps	31.0 a
Insulation Class	F
Inverter Code	Inverter Duty
KVA Code	G
Lifting Lugs	Standard Lifting Lugs
Locked Bearing Indicator	Locked Bearing
Max Speed	2700 rpm
Motor Lead Exit	Ko Box
Motor Lead Quantity/Wire Size	9 @ 10 AWG
Motor Lead Termination	Flying Leads
Motor Standards	NEMA
Motor Type	1072M
Mounting Arrangement	F1
Number of Poles	4
Overall Length	28.00 IN
Power Factor	81
Product Family	Super-E Chemical Processing
Pulley End Bearing Type	Ball
Pulley Face Code	Standard
Pulley Shaft Indicator	Standard
Rodent Screen	None
Service Factor	1.25
Shaft Diameter	1.875 IN
Shaft Extension Location	Pulley End
Shaft Ground Indicator	No Shaft Grounding
Shaft Rotation	Reversible
Shaft Slinger Indicator	Shaft Slinger
Speed	1770 rpm
Speed Code	Single Speed

<b>Starting Method</b>	Direct on line
<b>Thermal Device - Bearing</b>	None
<b>Thermal Device - Winding</b>	None
<b>Vibration Sensor Indicator</b>	No Vibration Sensor
<b>Winding Thermal 1</b>	None
<b>Winding Thermal 2</b>	None

**Nameplate**

**NP3293**

<b>CAT.NO.</b>	ECR9254T	<b>P/N</b>		<b>ENCLOSURE</b>	TEFC
<b>SPEC.</b>	10J907Z352G1	<b>CC</b>	010A	<b>FRAME</b>	284T
<b>HP</b>	25	<b>CLASS</b>	F	<b>HZ</b>	60
<b>RPM</b>	1770	<b>RPM MAX</b>	2700	<b>PH</b>	3
<b>VOLT</b>	230/460	<b>I.P.</b>	55	<b>KVA-CODE</b>	G
<b>AMP</b>	62/31	<b>SER.F.</b>	1.25	<b>PF</b>	81
<b>RATING</b>	40C AMB-CONT	<b>NEMA-NOM-EFF</b>	93.6	<b>ODE BRG</b>	6311
<b>HTR-VOLTS</b>	<b>HTR-AMPS</b>	<b>HTR-WATTS</b>		<b>DE BRG</b>	6312
	SFA 76/38	<b>INV.TYPE</b>			
		<b>C HP FR</b>	60	<b>C HP TO</b>	90
		<b>CT HZ FROM</b>	6	<b>CT HZ TO</b>	60
		<b>MOTOR WEIGHT</b>	380	<b>VT HZ FROM</b>	6
				<b>VT HZ TO</b>	60

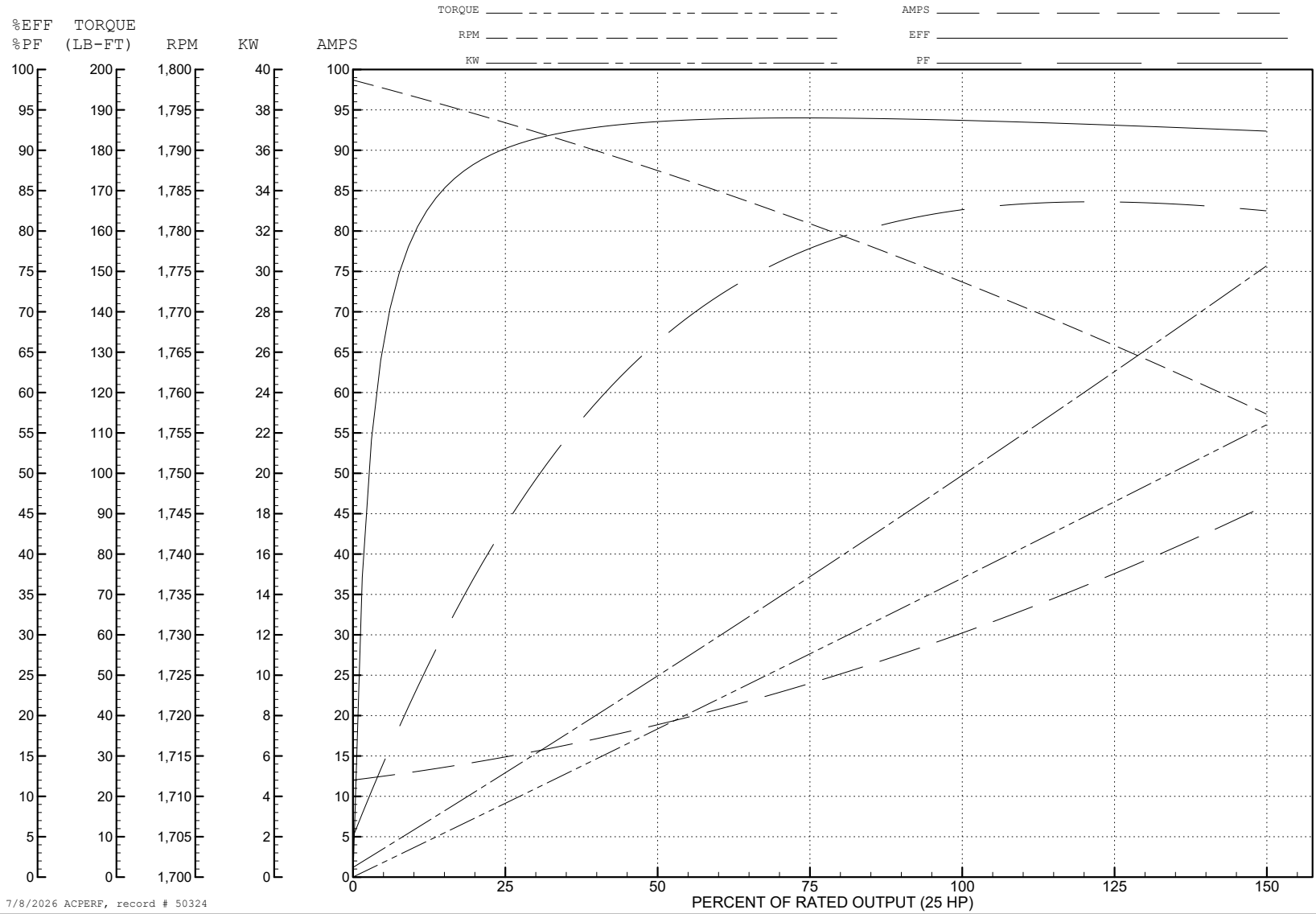
ABB Motors and Mechanical Inc.

WINDING # 10WGZ352

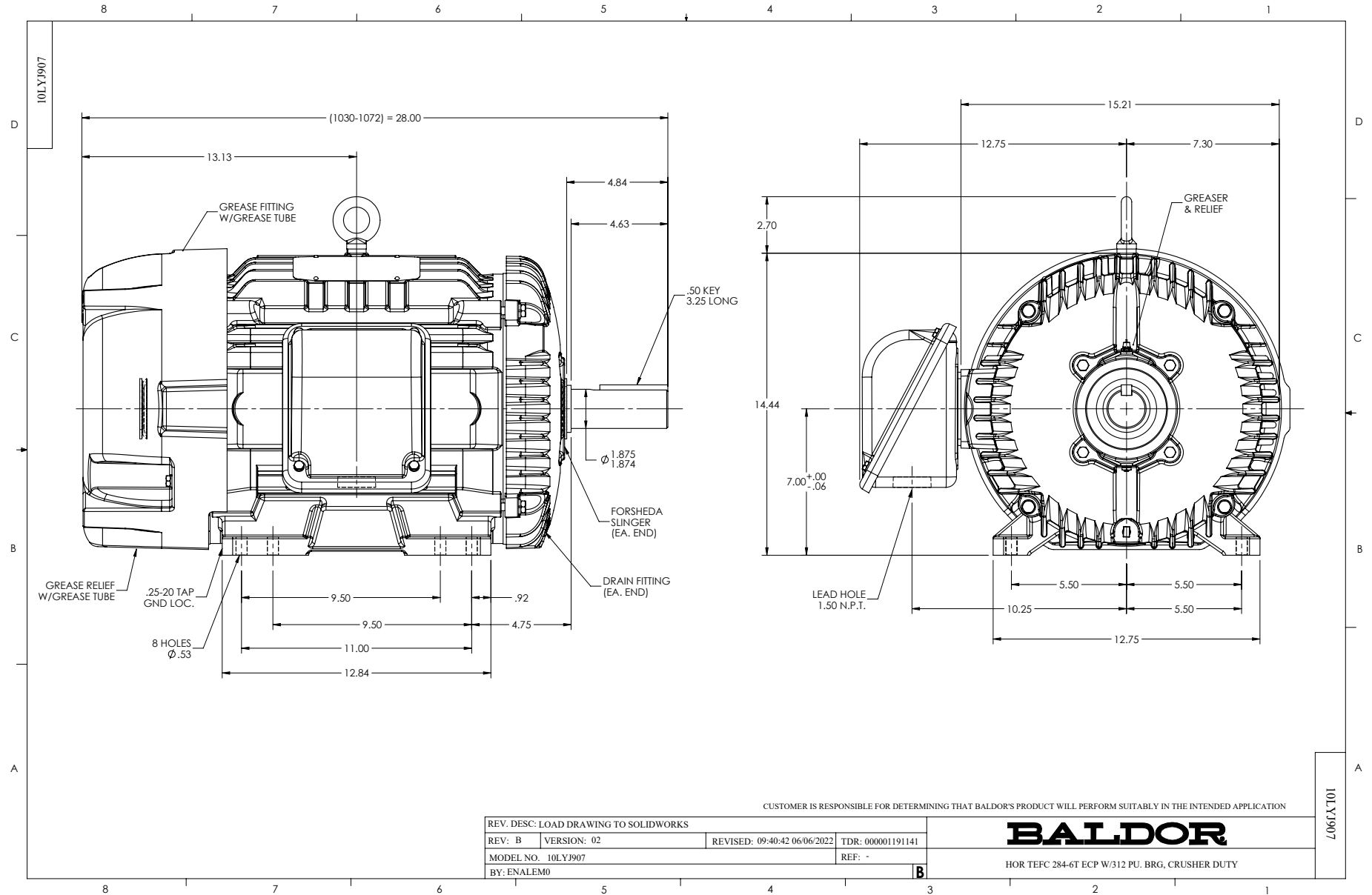
Typical performance - not guaranteed values.

25 HP 3 PH 60 HZ 1770 RPM 460 V 1072M

TORQUES (LB-FT): PO=208 PU=133 LR=187 LRA=188



7/8/2026 ACPERF, record # 50324



CD0180



LOW VOLTAGE  
(2D)



HIGH VOLTAGE  
(1D)



NOTES:

1. INTERCHANGE ANY TWO LINE LEADS TO REVERSE ROTATION.
2. OPTIONAL THERMOSTATS ARE PROVIDED WHEN SPECIFIED.
3. ACTUAL NUMBER OF INTERNAL PARALLEL CIRCUITS MAY BE A MULTIPLE OF THOSE SHOWN ABOVE.
4. LEAD COLORS ARE OPTIONAL. LEADS MUST ALWAYS BE NUMBERED AS SHOWN.

CD0180

REV. DESC: ADD CLASS CONN00000007		
REV. LTR: D	VERSION: 01	TDR: 000001099922
FILE: \AAA\00005\148	REVISED: 10: 25: 29 02/19/2019	BY: ENBRIRO
MTL: -	© □	

**BALDOR - RELIANCE®**

3PH, DV, 9 LEADS, DELTA CONNECTION

SH 1 of 1