

**BALDOR • RELIANCE**

---

# Customer information packet

## ECR9076T

7.5HP, 1180RPM, 3PH, 60HZ, 254T, 0954M, TEFC, F

Class - None

Division - Not Applicable

## Specifications

Enclosure	TEFC
Frame	254T
Frame Material	Iron
Frequency	60.00 Hz
Haz Area Class and Group	None
Haz Area Division	Not Applicable
Motor Letter Type	Three Phase
Output @ Frequency	7.500 HP @ 60 HZ
Phase	3
Synchronous Speed @ Frequency	1200 RPM @ 60 HZ
Voltage @ Frequency	460.0 V @ 60 HZ 230.0 V @ 60 HZ
Agency Approvals	CCSA US CSA EEV NEMA PREMIUM NEMA_PREMIUM UR
Ambient Temperature	40 °C
Auxiliary Box	NO AUXILLARY BOX
Auxiliary Box Lead Termination	None
Base Indicator	Rigid
Bearing Grease Type	Polyrex EM (-20F +300F)
Blower	None
Constant Torque Speed Range	6
Current @ Voltage	23.400 A @ 208.0 V 21.800 A @ 230.0 V 10.900 A @ 460.0 V
Design Code	A
Drip Cover	No Drip Cover
Duty Rating	CONT
Efficiency @ 100% Load	91.0 %
Electrically Isolated Bearing	Not Electrically Isolated

## Part detail

Revision	Q
Type	AC
Mech. spec.	09L575
Base	
Status	PRD/A
Elec. spec.	09WGT572
Layout	09LYL575
Eff. date	06-24-2024
CD Diagram	CD0005
Poles	06
Leads	9#12 Y
Proprietary	False
Created date	05-17-2018

<b>Feedback Device</b>	NO FEEDBACK
<b>Front Shaft Indicator</b>	None
<b>Heater Indicator</b>	No Heater
<b>High Voltage Full Load Amps</b>	10.9 a
<b>Insulation Class</b>	F
<b>Inverter Code</b>	Inverter Duty
<b>KVA Code</b>	M
<b>Lifting Lugs</b>	Standard Lifting Lugs
<b>Locked Bearing Indicator</b>	Locked Bearing
<b>Max Speed</b>	1800 rpm
<b>Motor Lead Quantity/Wire Size</b>	9 @ 12 AWG
<b>Motor Lead Termination</b>	Flying Leads
<b>Motor Standards</b>	NEMA
<b>Motor Type</b>	0954M
<b>Mounting Arrangement</b>	F1
<b>Number of Poles</b>	6
<b>Overall Length</b>	24.77 IN
<b>Power Factor</b>	71
<b>Product Family</b>	Super-E Chemical Processing
<b>Pulley End Bearing Type</b>	Ball
<b>Pulley Face Code</b>	Standard
<b>Pulley Shaft Indicator</b>	Standard
<b>Rodent Screen</b>	None
<b>Service Factor</b>	1.25
<b>Shaft Diameter</b>	1.625 IN
<b>Shaft Ground Indicator</b>	No Shaft Grounding
<b>Shaft Rotation</b>	Reversible
<b>Shaft Slinger Indicator</b>	Shaft Slinger
<b>Speed</b>	1180 rpm
<b>Speed Code</b>	Single Speed
<b>Starting Method</b>	Direct on line
<b>Thermal Device - Bearing</b>	None
<b>Thermal Device - Winding</b>	None
<b>Vibration Sensor Indicator</b>	No Vibration Sensor

Winding Thermal 1	None
Winding Thermal 2	None

---

**Nameplate**

**NP3293**

<b>CAT.NO.</b>	ECR9076T	<b>P/N</b>		<b>ENCLOSURE</b>	TEFC				
<b>SPEC.</b>	09L575T572G1	<b>CC</b>	010A	<b>FRAME</b>	254T	<b>S/N</b>			
<b>HP</b>	7.5	<b>CLASS</b>	F	<b>HZ</b>	60	<b>DES</b>	A		
<b>RPM</b>	1180	<b>RPM MAX</b>	1800	<b>PH</b>	3	<b>KVA-CODE</b>	M		
<b>VOLT</b>	230/460	<b>I.P.</b>	55						
<b>AMP</b>	21.8/10.9	<b>SER.F.</b>	1.25	<b>PF</b>	71	<b>ODE BRG</b>	6309	<b>DE BRG</b>	6311
<b>RATING</b>	40C AMB-CONT	<b>NEMA-NOM-EFF</b>	91	<b>GREASE</b>	POLYREX EM				
<b>HTR-VOLTS</b>	<b>HTR-AMPS</b>	<b>HTR-WATTS</b>		<b>INV.TYPE</b>					
	SFA 26.4/13.2								
		<b>C HP FR</b>	60	<b>C HP TO</b>	90				
		<b>CT HZ FROM</b>	6	<b>CT HZ TO</b>	60				
		<b>MOTOR WEIGHT</b>	302	<b>VT HZ FROM</b>	6	<b>VT HZ TO</b>	60		

**AC Induction Motor Performance Data**

Record # 73415

Typical performance - not guaranteed values

<b>Winding: 09WGT572-R001</b>		<b>Type: 0954M</b>		<b>Enclosure: TEFC</b>	
<b>Nameplate Data</b>			<b>460 V, 60 Hz: High Voltage Connection</b>		
<b>Rated Output (HP)</b>	7.5	<b>Full Load Torque</b>	33.37 LB-FT		
<b>Volts</b>	230/460	<b>Start Configuration</b>	direct on line		
<b>Full Load Amps</b>	21.8/10.9	<b>Breakdown Torque</b>	135 LB-FT		
<b>R.P.M.</b>	1180	<b>Pull-up Torque</b>	64.1 LB-FT		
<b>Hz</b>	60	<b>Phase</b>	3	<b>Locked-rotor Torque</b>	107 LB-FT
<b>NEMA Design Code</b>	A	<b>KVA Code</b>	K	<b>Starting Current</b>	94.2 A
<b>Service Factor (S.F.)</b>	1.25	<b>No-load Current</b>	6.27 A		
<b>NEMA Nom. Eff.</b>	91	<b>Power Factor</b>	74	<b>Line-line Res. @ 25°C</b>	0.91046 Ω
<b>Rating - Duty</b>	40C AMB-CONT		<b>Temp. Rise @ Rated Load</b>	36°C	
<b>S.F. Amps</b>	25.6/12.8		<b>Temp. Rise @ S.F. Load</b>	46°C	
			<b>Locked-rotor Power Factor</b>	28.6	

**Load Characteristics 460 V, 60 Hz, 7.5 HP**

<b>% of Rated Load</b>	<b>25</b>	<b>50</b>	<b>75</b>	<b>100</b>	<b>125</b>	<b>150</b>	<b>S.F.</b>
<b>Power Factor</b>	32	51	64	71	76	78	76
<b>Efficiency</b>	82.2	88.9	90.7	91	90.8	90.2	90.8
<b>Speed</b>	1196.4	1193.2	1189.6	1185.7	1181.5	1177.6	1182
<b>Line amperes</b>	6.7	7.73	9.18	10.9	12.8	14.9	12.8

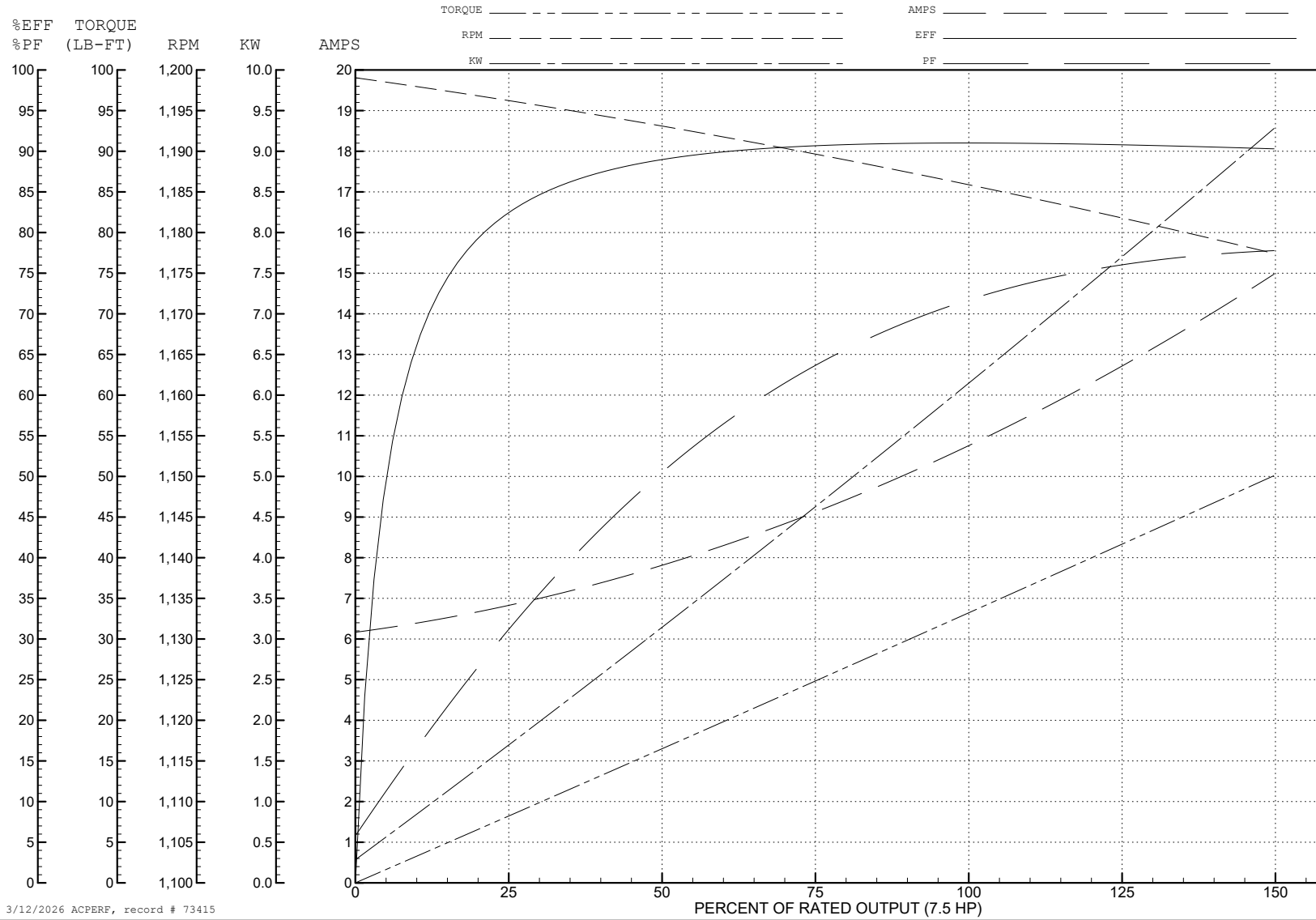
ABB Motors and Mechanical Inc.

WINDING # 09WGT572

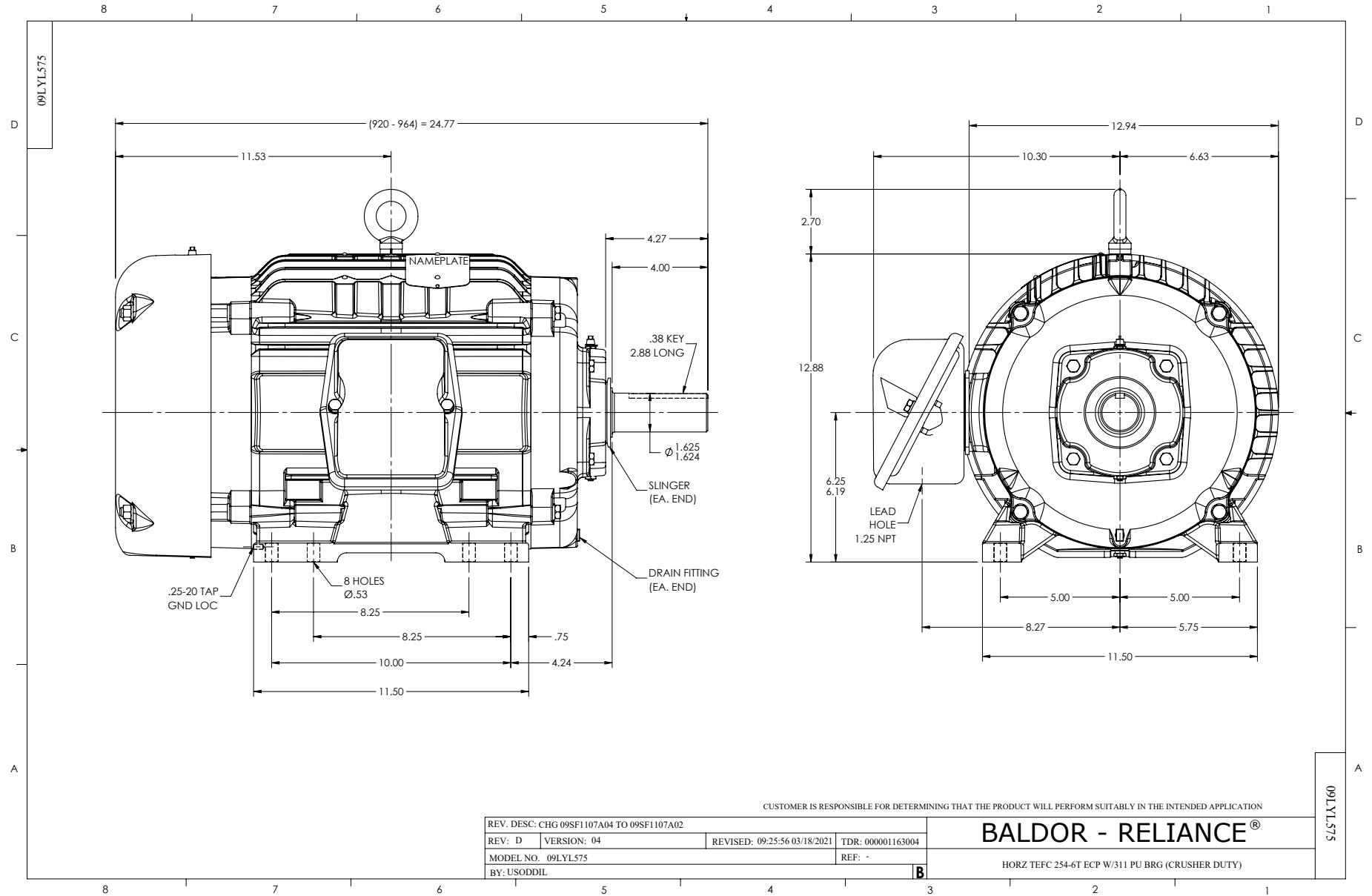
Typical performance - not guaranteed values.

7.5 HP 3 PH 60 HZ 1180 RPM 460 V 0954M

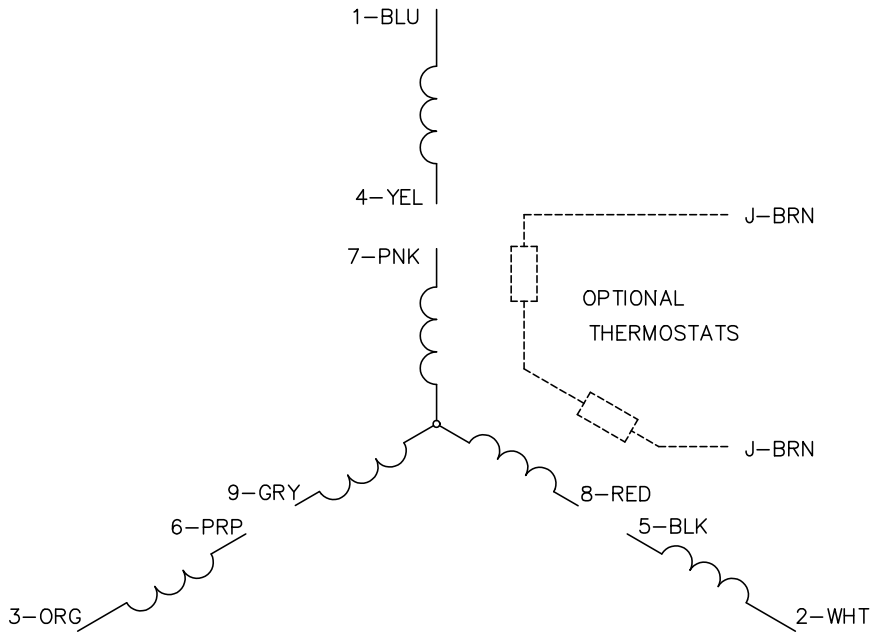
TORQUES (LB-FT): PO=135 PU=64.1 LR=107 LRA=94.2



3/12/2026 ACPERF, record # 73415



CD0005



LOW VOLTAGE  
(2Y)



LINE

HIGH VOLTAGE  
(1Y)



LINE

**NOTES:**

1. INTERCHANGE ANY TWO LINE LEADS TO REVERSE ROTATION.
2. OPTIONAL THERMOSTATS ARE PROVIDED WHEN SPECIFIED.
3. ACTUAL NUMBER OF INTERNAL PARALLEL CIRCUITS MAY BE A MULTIPLE OF THOSE SHOWN ABOVE.
4. LEAD COLORS ARE OPTIONAL. LEADS MUST ALWAYS BE NUMBERED AS SHOWN.

CD0005

REV. DESC: REVISE TO SHOW OPTIONAL COLORS			
REV. LTR: E	BY: JLP	REVISED: 01/19/99 10:15	TDR: 0171435
S00000		FILE: AAA00005140	MDL: -
		MTL: -	

**BALDOR ELECTRIC Co.**

3PH, DV, 9 LEADS