

ABB BALDOR RELIANCE III

Customer information packet

ECR9054T

5HP, 1760RPM, 3PH, 60HZ, 184T, 0642M, TEFC, F1

Class - None

Division - Not Applicable

Specifications

Enclosure	TEFC
Frame	184T
Frame Material	Iron
Frequency	60.00 Hz
Haz Area Class and Group	None
Haz Area Division	Not Applicable
Motor Letter Type	Three Phase
Output @ Frequency	5.000 HP @ 60 HZ
Phase	3
Synchronous Speed @ Frequency	1800 RPM @ 60 HZ
Voltage @ Frequency	460.0 V @ 60 HZ 230.0 V @ 60 HZ
Agency Approvals	CCSA US CSA EEV NEMA PREMIUM UR
Ambient Temperature	40 °C
Auxiliary Box	NO AUXILLARY BOX
Auxiliary Box Lead Termination	None
Base Indicator	Rigid
Bearing Grease Type	Polyrex EM (-20F +300F)
Blower	None
Constant Torque Speed Range	6
Current @ Voltage	7.200 A @ 460.0 V 14.400 A @ 230.0 V 14.400 A @ 208.0 V
Design Code	A
Drip Cover	No Drip Cover
Duty Rating	CONT
Efficiency @ 100% Load	89.5 %
Electrically Isolated Bearing	Not Electrically Isolated
Enclosure Modification	Severe Duty Features

Part Detail

Revision	A
Type	AC
Mech. spec.	06K520
Base	
Status	PRD/A
Elec. spec.	06WGX899
Layout	06LYK520
Eff. date	07-12-2023
CD Diagram	CD0005
Poles	04
Leads	9#16
Proprietary	False
Created date	03-28-2023

Feedback Device	NO FEEDBACK
Front Shaft Indicator	None
Heater Indicator	No Heater
High Voltage Full Load Amps	7.2 a
Insulation Class	F
Inverter Code	Inverter Duty
KVA Code	L
Lifting Lugs	Standard Lifting Lugs
Locked Bearing Indicator	No Locked Bearing
Max Speed	2700 rpm
Motor Lead Quantity/Wire Size	9 @ 16 AWG
Motor Lead Termination	Flying Leads
Motor Standards	NEMA
Motor Type	0642M
Mounting Arrangement	F1
Number of Poles	4
Overall Length	15.93 IN
Power Factor	73
Product Family	Super-E Chemical Processing
Pulley End Bearing Type	Ball
Pulley Face Code	Standard
Pulley Shaft Indicator	Standard
Rodent Screen	None
Service Factor	1.25
Shaft Diameter	1.125 IN
Shaft Ground Indicator	No Shaft Grounding
Shaft Rotation	Reversible
Shaft Slinger Indicator	Shaft Slinger
Speed	1760 rpm
Speed Code	Single Speed
Starting Method	Direct on line
Thermal Device - Bearing	None
Thermal Device - Winding	None
Vibration Sensor Indicator	No Vibration Sensor

Winding Thermal 1

None

Winding Thermal 2

None

Nameplate

NP3294									
CAT NO	ECR9054T								
SPEC.	06K520X899G1	ENCL		TEFC					
FRAME	184T	HP	5						
VOLTS	230/460								
FLA	13.8/6.9	I.P.		55					
RPM	1760	RPM MAX		2700					
HZ	60	PH	3	CLASS		F			
SER.F.	1.25	DES	A	CC	010A				
NEMA-NOM-EFF	89.5								
RATING	40C AMB-CONT								
DE BRG	6306	ODE BRG		6206					
GREASE	POLYREX EM								
INV.TYPE	PWM	C HP FR	60	C HP TO	90				
CT HZ FROM	6	CT HZ TO	60	VT HZ FROM	6	VT HZ TO	60		
SER.NO	SFA 17.6/8.8								

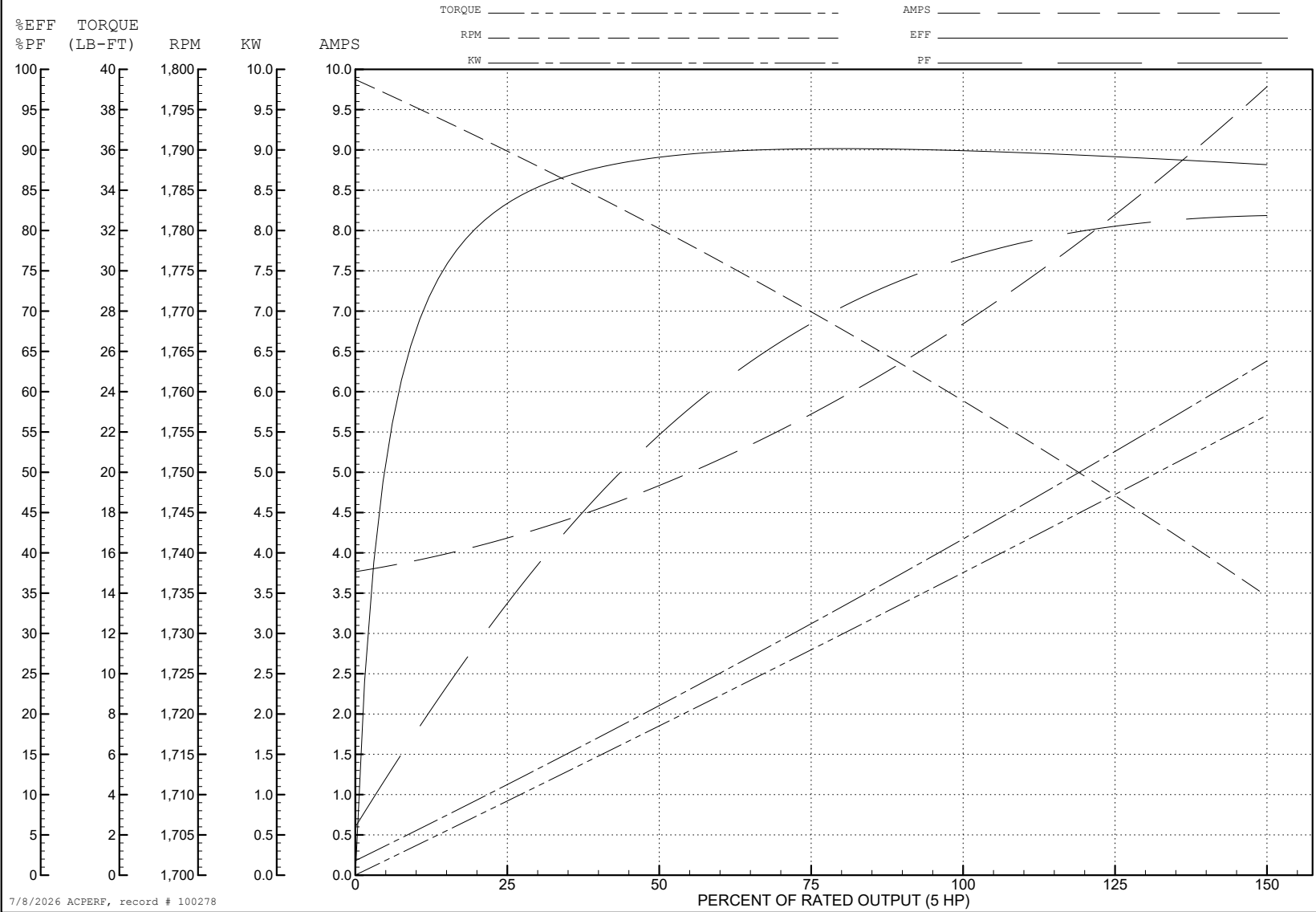
ABB Motors and Mechanical Inc.

WINDING # 06WGX899

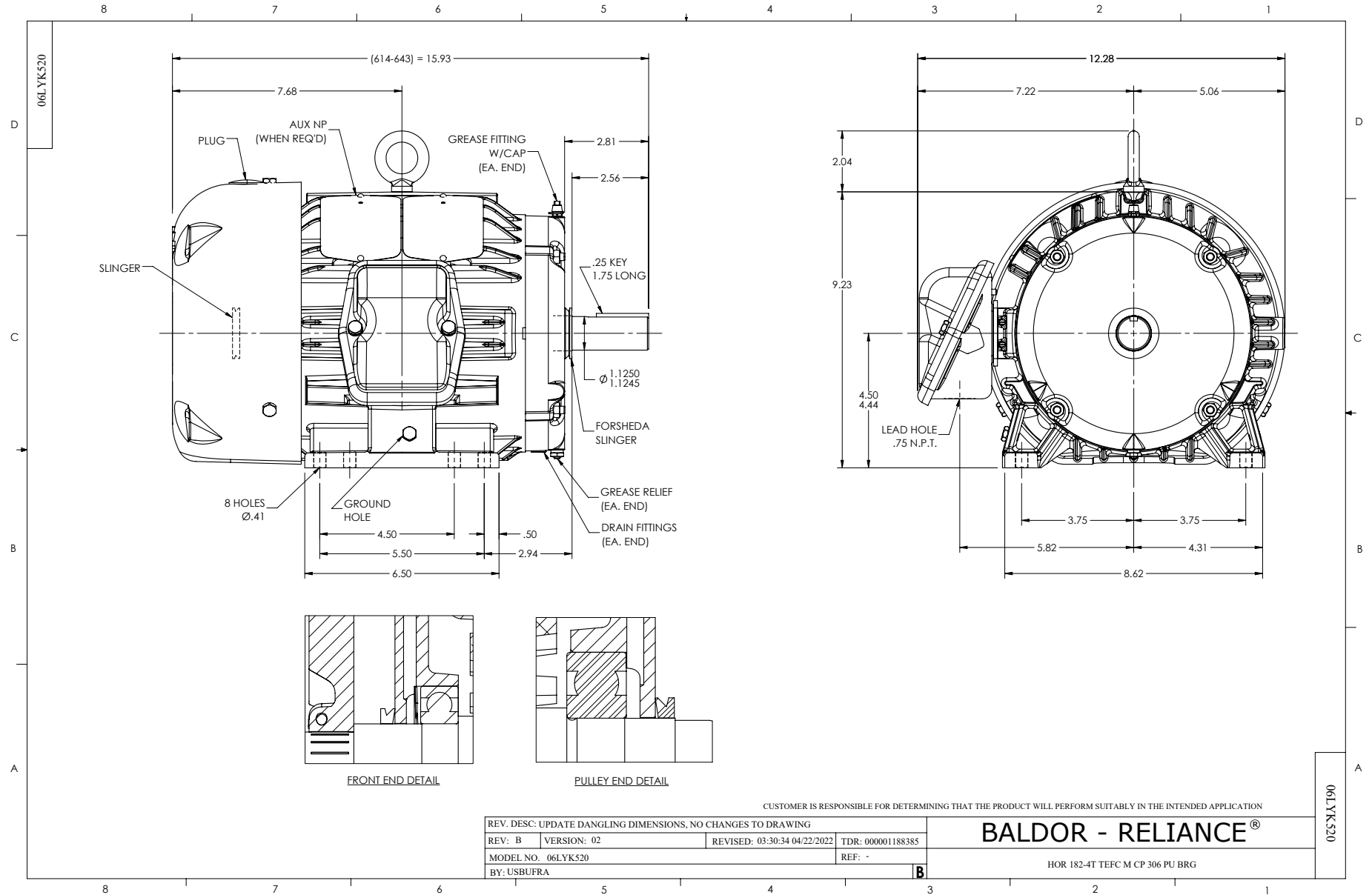
5 HP 3 PH 60 HZ 1760 RPM 460 V 0642M

Typical performance - not guaranteed values.

TORQUES (LB-FT): PO=58.8 PU=32.2 LR=38.3 LRA=56.2



7/8/2026 ACPERF, record # 100278



CD0005



LOW VOLTAGE
(2Y)



LINE

HIGH VOLTAGE
(1Y)



LINE

NOTES:

1. INTERCHANGE ANY TWO LINE LEADS TO REVERSE ROTATION.
2. OPTIONAL THERMOSTATS ARE PROVIDED WHEN SPECIFIED.
3. ACTUAL NUMBER OF INTERNAL PARALLEL CIRCUITS MAY BE A MULTIPLE OF THOSE SHOWN ABOVE.
4. LEAD COLORS ARE OPTIONAL. LEADS MUST ALWAYS BE NUMBERED AS SHOWN.

CD0005

REV. DESC: REVISE TO SHOW OPTIONAL COLORS

REV. LTR: E BY: JLP REVISED: 01/19/99 10:15 TDR: 0171435

500000

FILE: AAA00005140

MDL: -

MTL: -

BALDOR ELECTRIC Co.

3PH, DV, 9 LEADS