



DUTY MASTER ALTERNATING CURRENT MOTORS

617434-820

ENCLOSURE: TOTALLY ENCLOSED

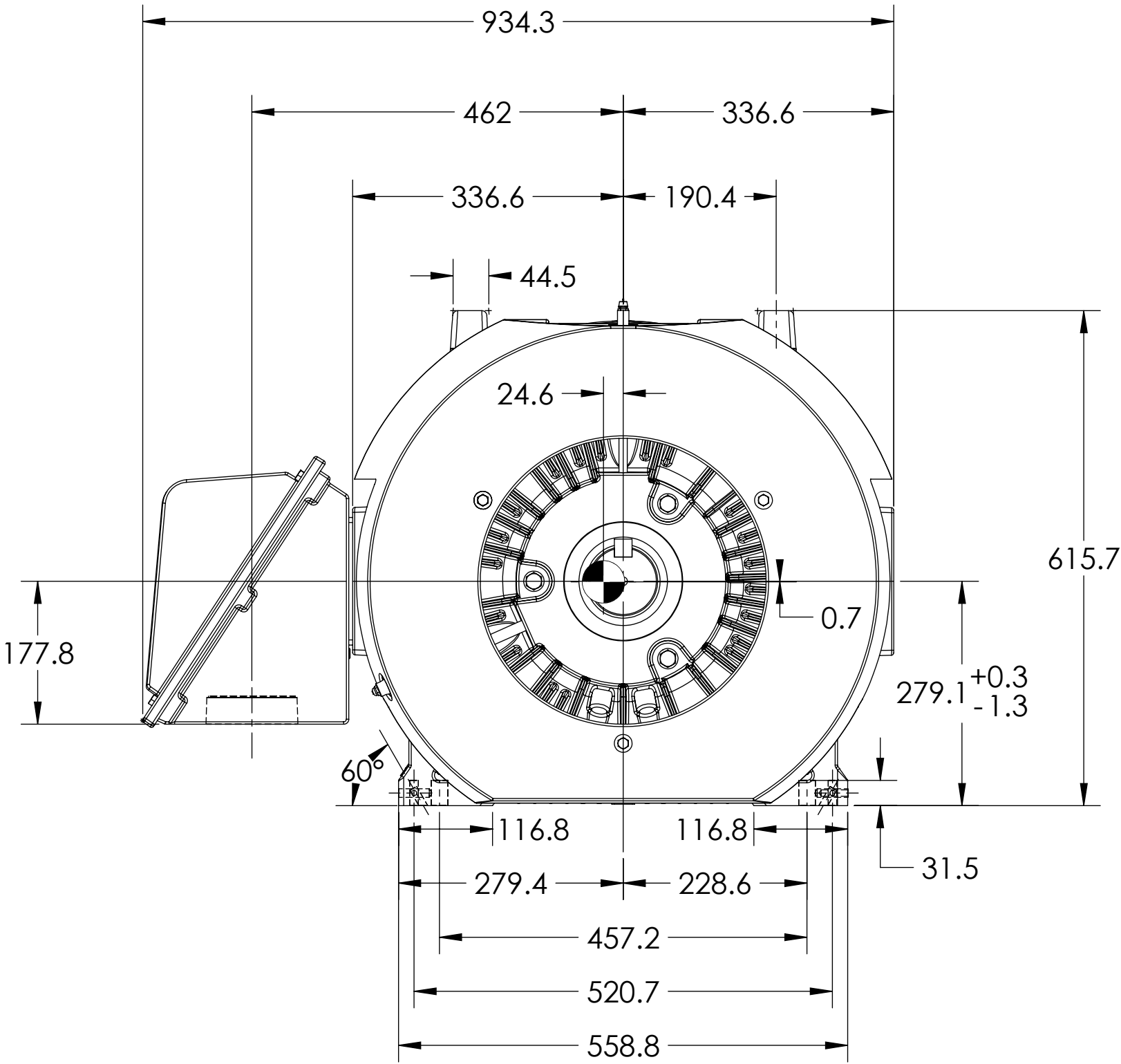
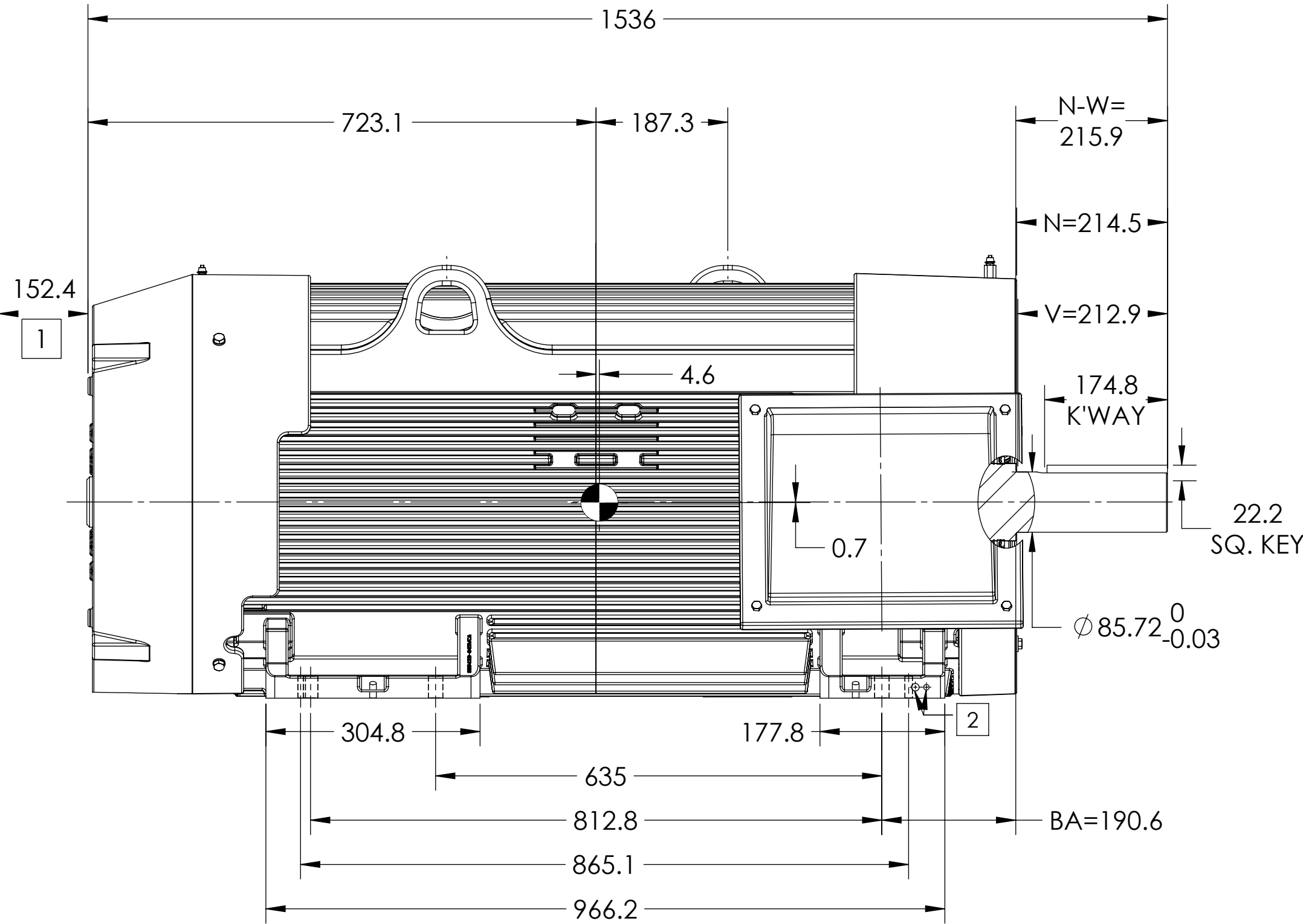
SQUIRREL-CAGE INDUCTION

COOLING: FAN COOLED

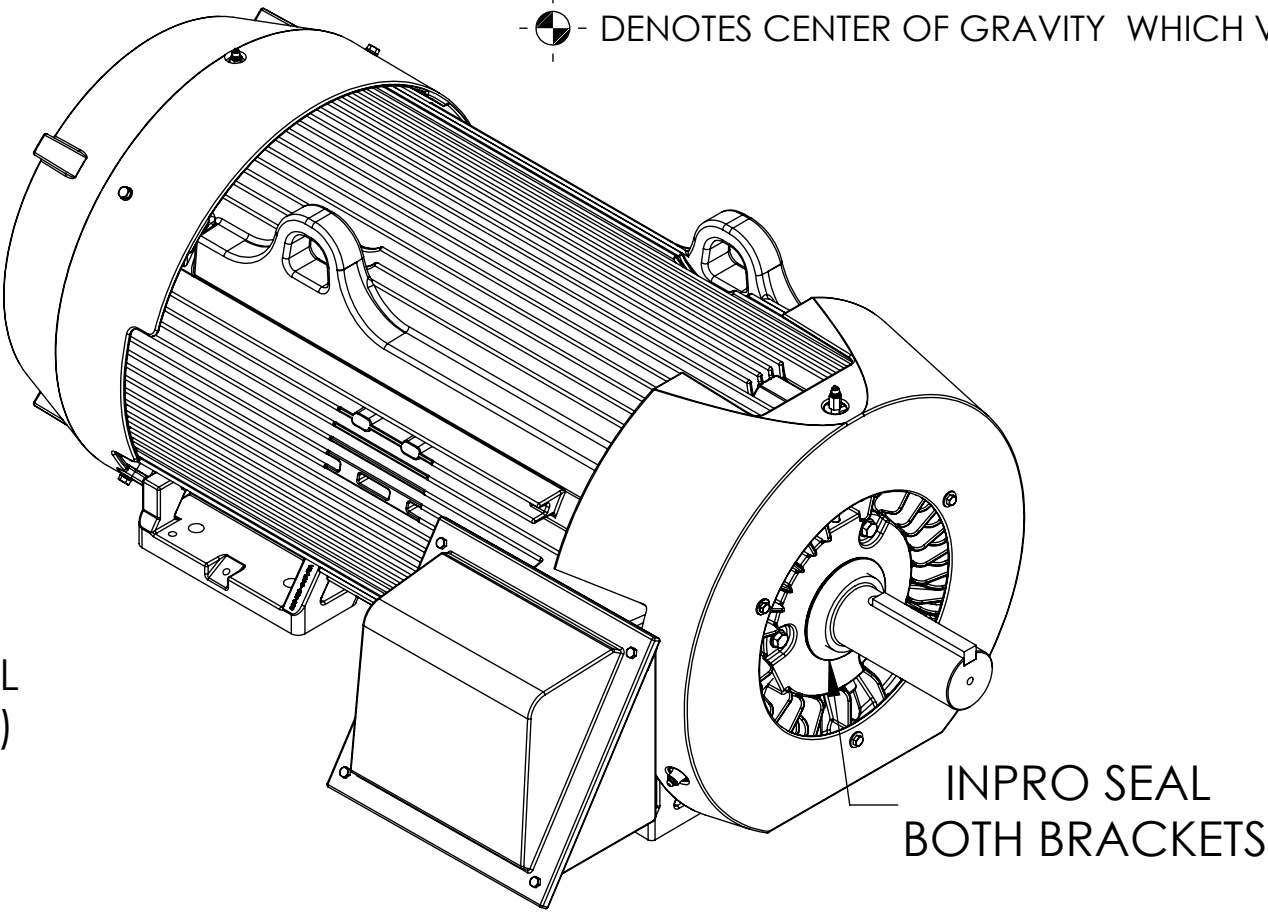
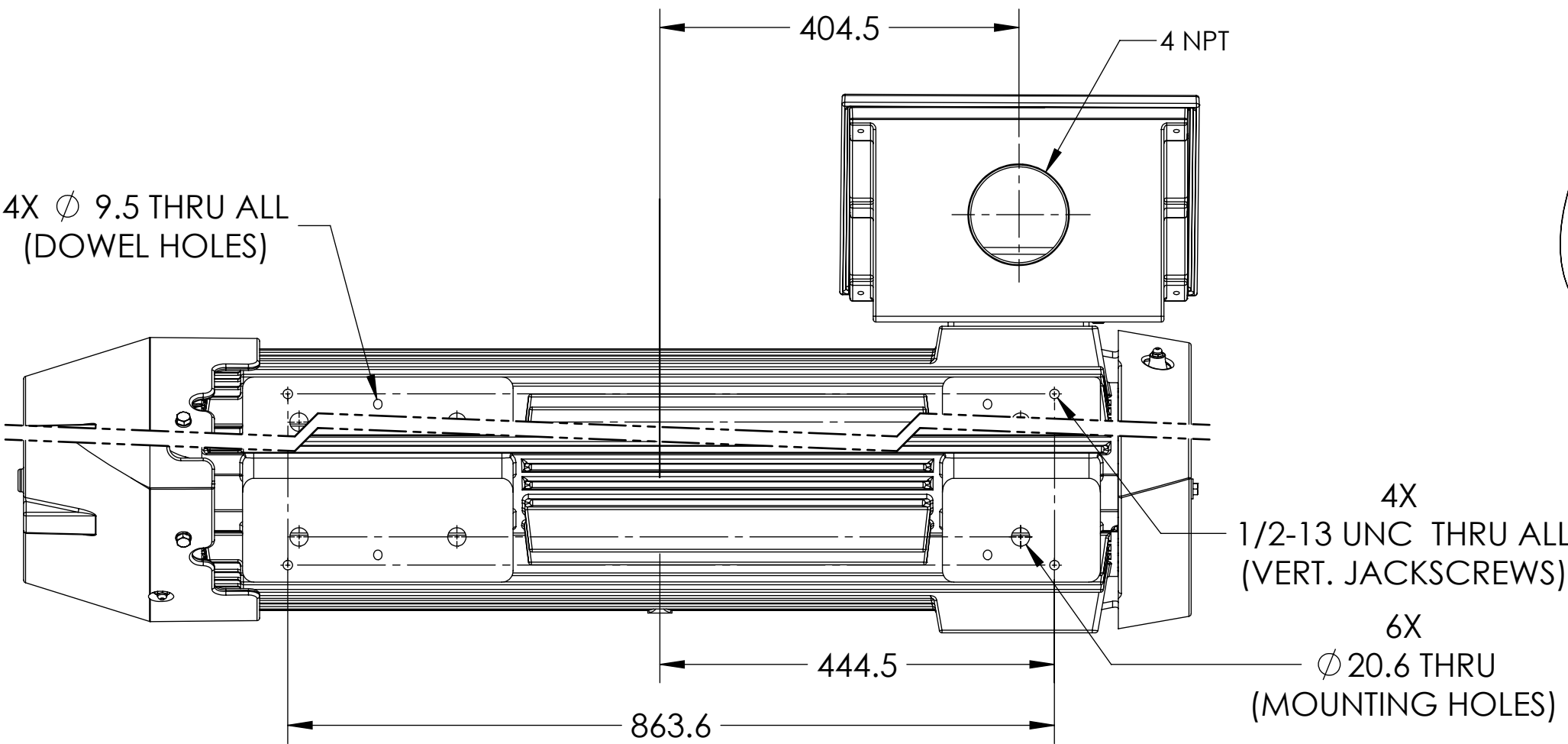
MOUNTING: FOOT, F-1

GL449T/G449T FRAME MOUNTING  
CENTER OF GRAVITY

841-XL ENHANCEMENT



⊙ DENOTES CENTER OF GRAVITY WHICH VARIES BY  $\pm 1.00$  INCH



- 1 OBSTRUCTION MUST NOT ENCROACH ON AIR INLET.
- 2 (1) 3/8-16 & (1) 1/2-13 GROUNDING TAPS (BOTH SIDES).

IF MOUNTING CLEARANCE DETAILS ARE REQUIRED, CONSULT FACTORY.  
MAX PERMISSIBLE SHAFT RUNOUT WHEN MEASURED AT END OF STANDARD  
SHAFT EXTENSION IS .04 T.I.R. FOR BALL BEARING & .051 FOR ROLLER BEARING

DIMENSIONS ARE IN INCHES.  
CUSTOMER IS RESPONSIBLE FOR DETERMINING THAT MOTOR PERFORMANCE IS SUITABLE IN THE APPLICATION.

REV. DESC: UPDATE MODEL TO ADD EXTERNAL HARDWARE PER PROD MGM			
REV: C	VERSION: 03	REVISED: 04:27:23 09/16/2022	TDR: 000001196512
MODEL NO. 617434-820			
BY: ENFRAJ0			

**BALDOR**

GL449/449T F1 TEFC FOOT SIDE CI BOX/INPROS/JACKSCREWS/DOWELS

SHEET NUMBER  
2 OF 2

617434-820

617434-820