

ABB BALDOR RELIANCE III

Customer information packet

ECP844306T-4

300HP, 1190RPM, 3PH, 60HZ, L449T, TEFC, F1

Class - None

Division - Division II

Specifications

Enclosure	TEFC
Frame	L449T
Frame Material	Iron
Frequency	60.00 Hz
Haz Area Class and Group	None
Haz Area Division	Division II
Motor Letter Type	Three Phase
Output @ Frequency	300.000 HP @ 60 HZ
Phase	3
Synchronous Speed @ Frequency	1200 RPM @ 60 HZ
Voltage @ Frequency	460.0 V @ 60 HZ
Agency Approvals	CCSAUSEEV
Ambient Temperature	40 °C
Auxiliary Box	NO AUXILLARY BOX
Base Indicator	Rigid
Bearing Grease Type	Polyrex EM (-20F +300F)
Constant Torque Speed Range	30-60
Current @ Voltage	340.000 A @ 460.0 V
Design Code	B
Drip Cover	No Drip Cover
Duty Rating	CONT
Efficiency @ 100% Load	95.8 %
Enclosure Modification	841
Feedback Device	NO FEEDBACK
Frame Prefix	L
Haz Area Temp Code	T3
Heater Indicator	No Heater
High Voltage Full Load Amps	340.0 a
Insulation Class	F
Inverter Code	Inverter Ready
IP Rating	IP56
KVA Code	G

Part Detail

Revision	D
Type	AC
Mech. spec.	
Base	
Status	PRD/A
Elec. spec.	A44WG4970
Layout	617434-820
Eff. date	03-15-2024
CD Diagram	416820-036
Poles	06
Leads	3#2/0 (02 per group)
Proprietary	False
Created date	08-20-2019

Motor Lead Quantity/Wire Size	6 @ 2/0 AWG
Motor Standards	NEMA
Motor Type	A44208M
Mounting Arrangement	F1
Number of Poles	6
Overall Length	60.47 IN
Power Factor	86
Product Family	General Industrial
Pulley End Bearing Type	Ball
Pulley Face Code	Standard
Service Factor	1.00
Shaft Diameter	3.375 IN
Shaft Ground Indicator	No Shaft Grounding
Shaft Rotation	Reversible
Shaft Slinger Indicator	No Slinger
Speed	1190 rpm
Speed Code	Single Speed
Starting Method	Direct on line
Thermal Device - Bearing	None
Thermal Device - Winding	None

Nameplate

NP2496L
MOBIL POLYREX EM

NP4566

CAT NO	ECP844306T-4	SPEC NO.	A44-8813-4970						
HP	300	AMPS	340	VOLTS	460	DESIGN	B		
FRAME SIZE	L449T	RPM	1190	HZ	60	AMB	40	SF	1.00
D.E. BRG.DATA	6222	O.D.E. BRG.DATA	6318	PH	3	DUTY	CONT	INSUL.CLASS	F
D.E. BRG.	110BC02J30X	TYPE	ENCL	TEFC	CODE	G			
O.D.E. BRG.	90BC03J30X	POWER FACTOR	86	NEMA-NOM-EFFICIENCY	95.8				
3/4 LOAD EFF.	96.3	IP	56	MAX CORR KVAR	62.2	GUARANTEED EFFICIENCY	95		
TEMP CODE	T3	TEMP =	200						
CHP HZ	60-90	CT HZ	30-60	VT HZ	0-60				
INVERTER-TEMP-CODE	T3								
SER.NO.		MOTOR WEIGHT							

REL. S.O.	FRAME	HP	TYPE	PHASE/ HERTZ	RPM	VOLTS
	L449T	300	P	3/60	1190	460
AMPS	DUTY	AMB °C/ INSUL.	S.F.	NEMA DESIGN	CODE LETTER	ENCL.
340	CONT	40/F	1.00	B	G	TEFC
E/S	ROTOR	TEST S.O.	TEST DATE	STATOR RES. @25 °C OHMS (BETWEEN LINES)		
401936	418143-087-SE	---	---	.0136		

PERFORMANCE

LOAD	HP	AMPERES	RPM	% POWER FACTOR	% EFFICIENCY
NO LOAD	0	87.9	1200	4.08	0
1/4	75.1	120	1197	62.1	94.5
2/4	150	181	1195	80.8	96.2
3/4	225	257	1192	85.2	96.3
4/4	300	340	1189	85.9	96.0
5/4	375	427	1186	86.1	95.5

SPEED TORQUE

	RPM	TORQUE % FULL LOAD	TORQUE LB.-FT.	AMPERES
LOCKED ROTOR	0	171	2269	2227
PULL UP	500	134	1769	1971
BREAKDOWN	1148	250	3309	1248
FULL LOAD	1189	100	1324	340

AMPERES SHOWN FOR 460. VOLT CONNECTION. IF OTHER VOLTAGE CONNECTIONS ARE AVAILABLE, THE AMPERES WILL VARY INVERSELY WITH THE RATED VOLTAGE

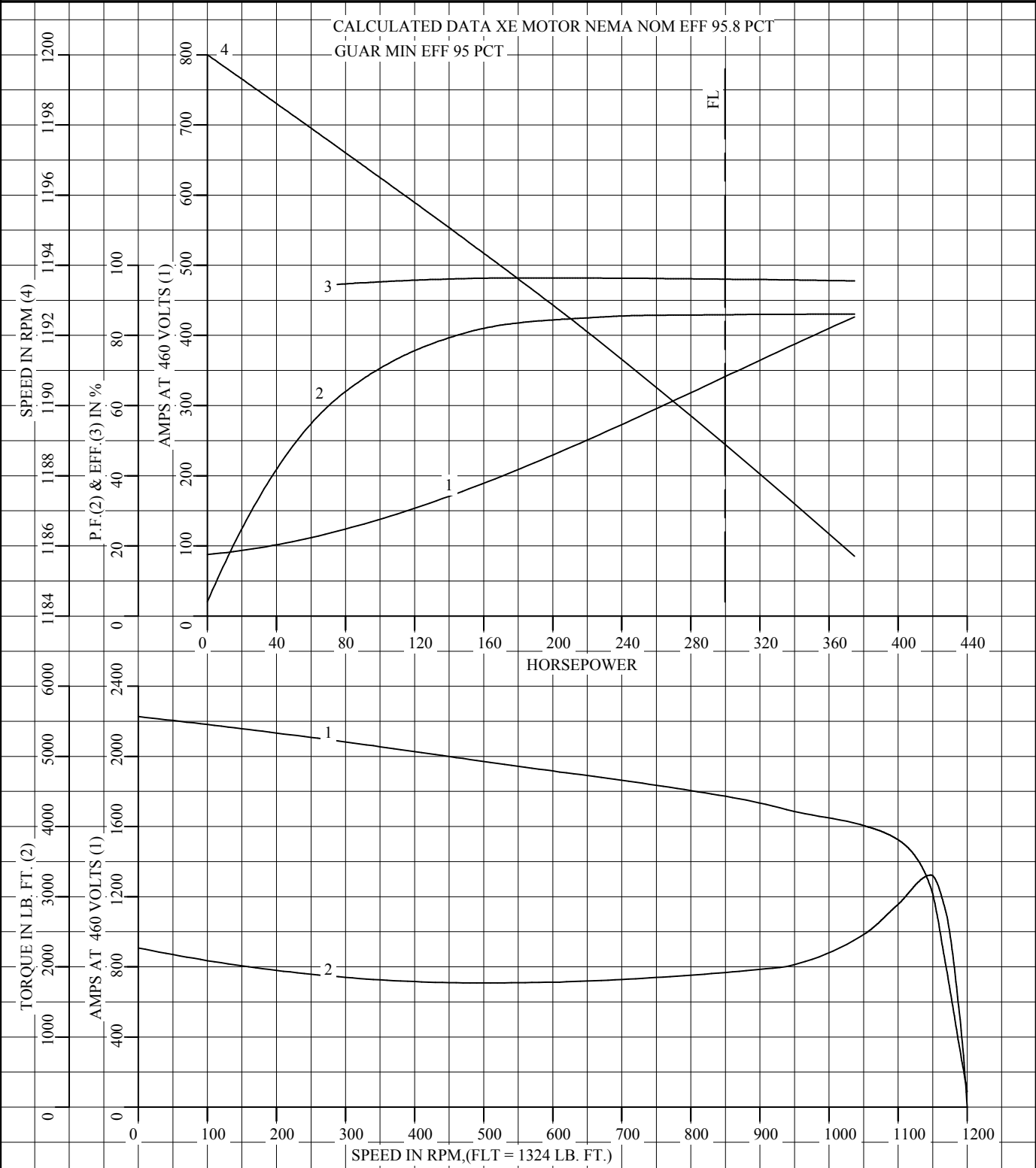
REMARKS: TYPICAL DATA
CALCULATED DATA XE MOTOR NEMA NOM EFF 95.8 PCT
GUAR MIN EFF 95 PCT



DR. BY CD
CK. BY T. KELATI
APP. BY T. KELATI
DATE 11/08/2013

**A-C MOTOR
PERFORMANCE A44WG4970-R001
DATA** ISSUE DATE 08/20/19

REL S.O.	RPM 1190	S.F. 1.00	ROTOR 418143-087-SE
FRAME L449T	VOLTS 460	NEMA DESIGN B	TEST S.O. TYPICAL DATA
HP 300	AMPS 340	CODE LETTER G	TEST DATE ---
TYPE P	DUTY CONT	ENCLOSURE TEFC	STATOR RES. @ 25 °C .0136
PHASE/HERTZ 3/60	AMB °C/INSUL 40/F	E/S 401936	OHMS (BETWEEN LINES)



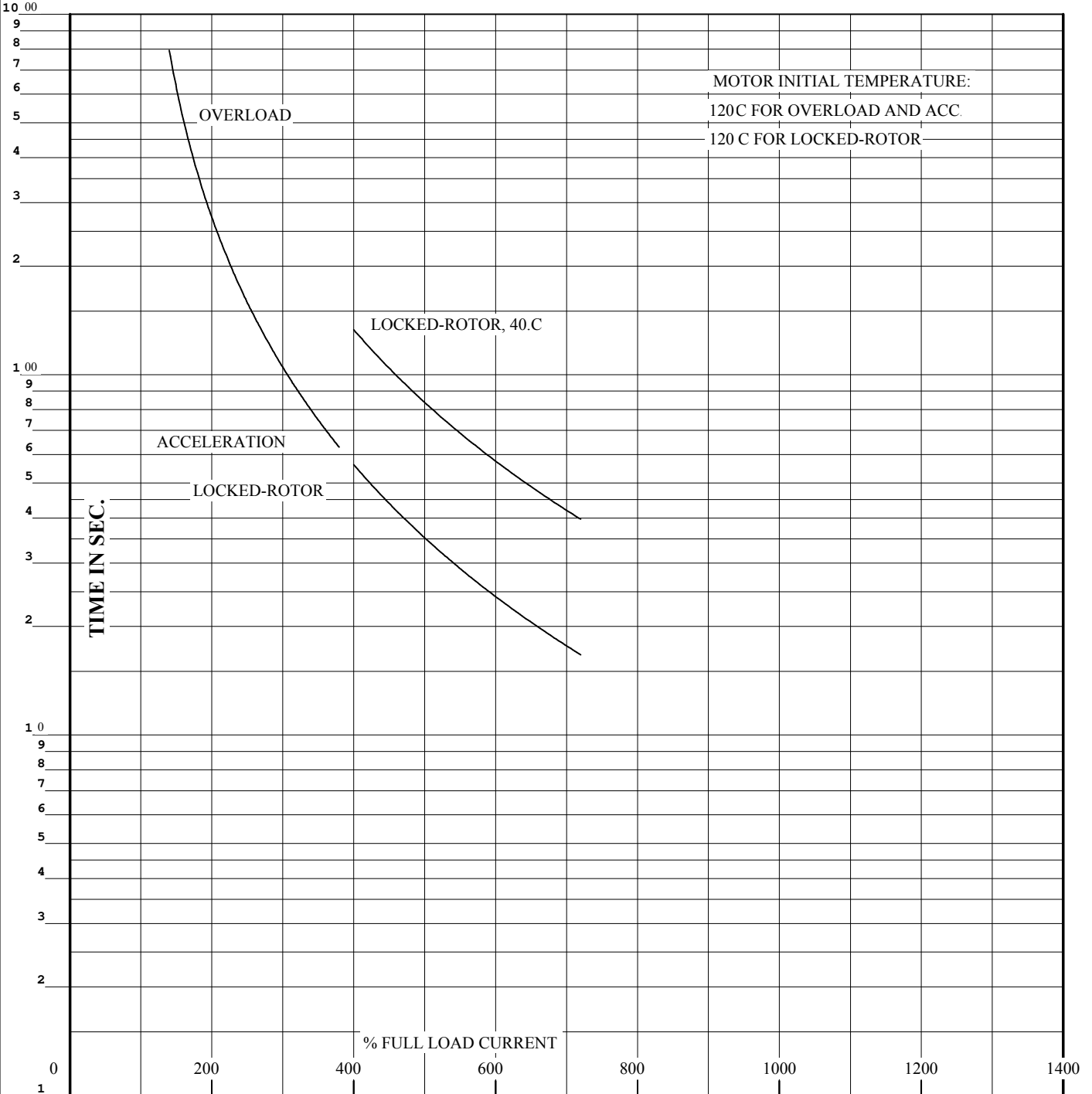
AMPERES SHOWN FOR 460 VOLT CONNECTION, IF OTHER VOLTAGE CONNECTIONS ARE AVAILABLE, THE AMPERES WILL VARY INVERSELY WITH THE RATED VOLTAGE.



DR. BY CD
CK. BY T. KELATI
APP. BY T. KELATI
DATE 11/08/2013

**A-C MOTOR
PERFORMANCE** A44WG4970-R001
CURVES ISSUE DATE 08/20/19

REL. S.O.	RPM 1190	S.F. 1.00	ROTOR 418143-087-SE
FRAME L449T	VOLTS 460	NEMA DESIGN B	TEST S.O. TYPICAL DATA
HP 300	AMPS 340	CODE LETTER G	TEST DATE ---
TYPE P	DUTY CONT	ENCLOSURE TEFC	STATOR RES. @ 25 °C .0136
PHASE/HERTZ 3/60	AMB °C/INSUL 40/F	E/S 401936	OHMS (BETWEEN LINES)



THERMAL LIMIT CURVE

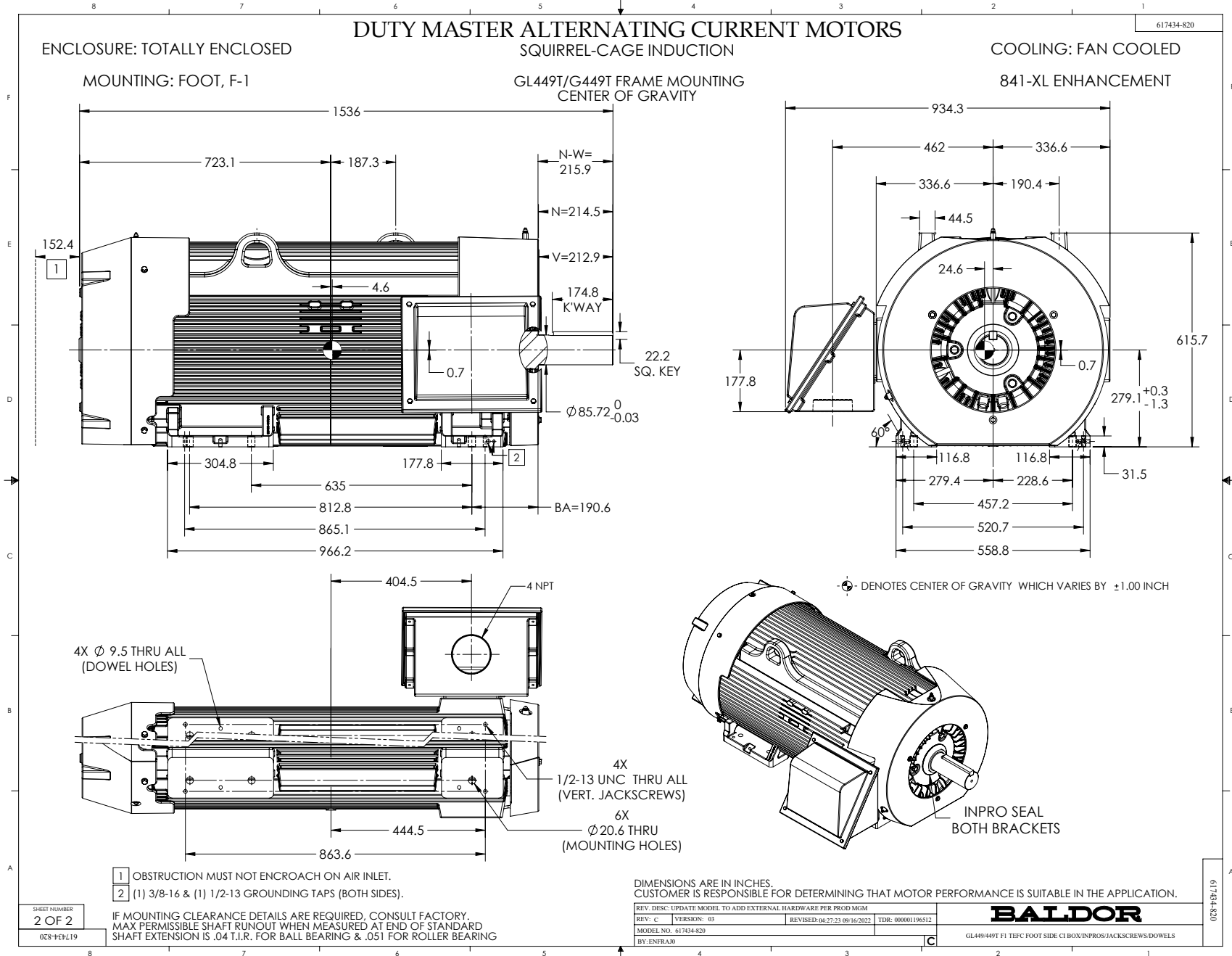
REMARKS: CALCULATED DATA XE MOTOR NEMA NOM EFF 95.8 PCT
GUAR MIN EFF 95 PCT

AMPERES SHOWN FOR 460 VOLT CONNECTION, IF OTHER VOLTAGE CONNECTIONS ARE AVAILABLE, THE AMPERES WILL VARY INVERSELY WITH THE RATED VOLTAGE.



DR. BY CD
CK. BY T. KELATI
APP. BY T. KELATI
DATE 11/08/2013

**A-C MOTOR
PERFORMANCE CURVES** **A44WG4970-R001**
ISSUE DATE 08/20/19 Page 8 of 11



416820-036

**A-C MOTOR
CONNECTION DIAGRAM
STANDARD 3 LEAD CONNECTED**



(N.P. 1575-BA)

REV. DESC: LOADED TO BUS, C/R 335225

REV. LTR: -

VERSION: 00

TDR: 000000538207

FILE: \MGA\00000\682

REVISED: 11: 54: 06 04/30/2010

MTL: -

BY: RAGRA

BALDOR

CONN DIAG - STANDARD 3 LEAD

SH 1 of 1

416820-036