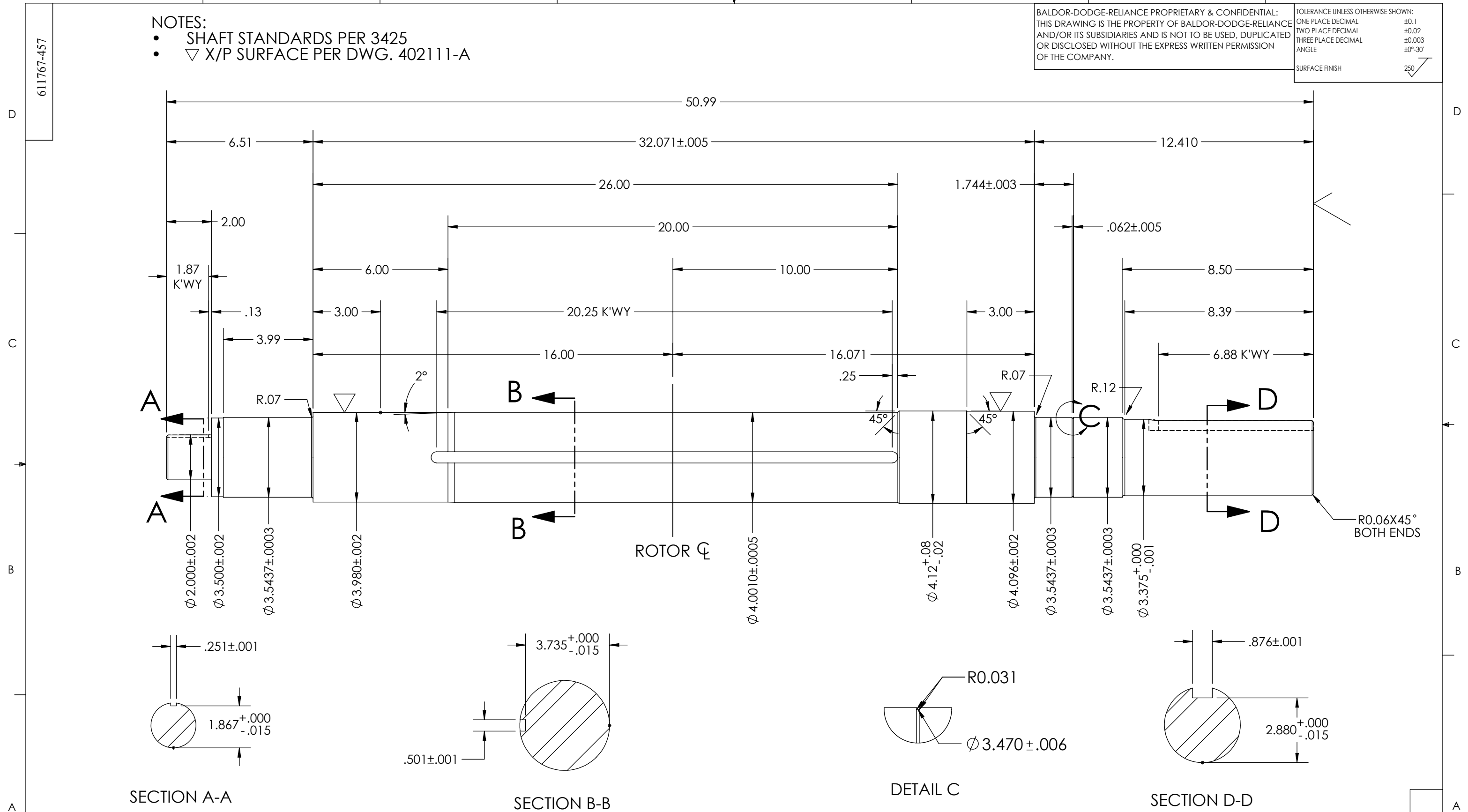


8 7 6 5 4 3 2 1

- NOTES:
- SHAFT STANDARDS PER 3425
 - ▽ X/P SURFACE PER DWG. 402111-A

BALDOR-DODGE-RELIANCE PROPRIETARY & CONFIDENTIAL:
THIS DRAWING IS THE PROPERTY OF BALDOR-DODGE-RELIANCE
AND/OR ITS SUBSIDIARIES AND IS NOT TO BE USED, DUPLICATED
OR DISCLOSED WITHOUT THE EXPRESS WRITTEN PERMISSION
OF THE COMPANY.

TOLERANCE UNLESS OTHERWISE SHOWN:	
ONE PLACE DECIMAL	±0.1
TWO PLACE DECIMAL	±0.02
THREE PLACE DECIMAL	±0.003
ANGLE	±0°-30'
SURFACE FINISH	250



SECTION A-A

SECTION B-B

DETAIL C

SECTION D-D

1	CORE KEY	34180-160	GA		
1	FINISHED SHAFT	4.25 X 50.99		FSCL1	160.5
RA	NAME	SIZE OR CASTING	SYM	46024-	WT. (LB.)

REV. DESC: UPDATING SNAP RING DIMENSIONS			
REV: A	VERSION: 01	REVISED: 01:15:16 07/18/2017	TDR: 000001036194
MODEL NO. 611767-457		REF:	
BY: USJEDIL	Material: FSCL1	B	

BALDOR

G449T TEFC 6318-6318 BRGS CLASS 1/4.00" ROTOR BORE/FLG

8 7 6 5 4 3 2 1

611767-457

611767-457