

ABB BALDOR RELIANCE III

Customer information packet

ECP844156T-4

150HP, 1190RPM, 3PH, 60HZ, 447T, TEFC, FOOT,

Class - CLI GP A,B,C,D

Division - Division II

Specifications

Enclosure	TEFC
Frame	447T
Frame Material	Iron
Frequency	60.00 Hz
Haz Area Class and Group	CLI GP A,B,C,D
Haz Area Division	Division II
Motor Letter Type	Three Phase
Output @ Frequency	150.000 HP @ 60 HZ
Phase	3
Synchronous Speed @ Frequency	1200 RPM @ 60 HZ
Voltage @ Frequency	460.0 V @ 60 HZ
Agency Approvals	UR CCSA US
Ambient Temperature	40 °C
Auxiliary Box	NO AUXILLARY BOX
Base Indicator	Rigid
Bearing Grease Type	Polyrex EM (-20F +300F)
Constant Torque Speed Range	15-60
Current @ Voltage	170.000 A @ 460.0 V
Design Code	B
Drip Cover	No Drip Cover
Duty Rating	CONT
Efficiency @ 100% Load	95.8 %
Enclosure Modification	841
Feedback Device	NO FEEDBACK
Haz Area Temp Code	T3
Heater Indicator	No Heater
High Voltage Full Load Amps	170.0 a
Insulation Class	F
Inverter Code	Inverter Ready
IP Rating	IP56
KVA Code	F

Part Detail

Revision	F
Type	AC
Mech. spec.	
Base	
Status	PRD/A
Elec. spec.	A44WG1496
Layout	617434-662
Eff. date	12-11-2023
CD Diagram	416820-036
Poles	06
Leads	3#1/0
Proprietary	False
Created date	12-11-2018

Lifting Lugs	No Lifting Lugs
Motor Lead Quantity/Wire Size	3 @ 1/0 AWG
Motor Standards	None
Motor Type	A44120M
Mounting Arrangement	F1
No Load Current	42.5 a
Number of Poles	6
Overall Length	48.47 IN
Power Factor	86
Pulley End Bearing Type	Ball
Pulley Face Code	Standard
Service Factor	1.15
Shaft Diameter	3.375 IN
Shaft Ground Indicator	No Shaft Grounding
Shaft Rotation	Phase Seq-Std Rot (CCWODE)
Shaft Slinger Indicator	No Slinger
Speed	1190 rpm
Speed Code	Single Speed
Starting Method	Direct on line
Thermal Device - Bearing	None
Thermal Device - Winding	None


Nameplate

NP4566

CAT NO	ECP844156T-4	SPEC NO.	A44-8392-1496						
HP	150	AMPS	170	VOLTS	460	DESIGN	B		
FRAME SIZE	447T	RPM	1190	HZ	60	AMB	40	SF	1.15
D.E. BRG.DATA	6318	O.D.E. BRG.DATA	6318	PH	3	DUTY	CONT	INSUL.CLASS	F
D.E. BRG.	90BC03J30X	TYPE	ENCL	TEFC	CODE	F			
O.D.E. BRG.	90BC03J30X	POWER FACTOR	86	NEMA-NOM-EFFICIENCY	95.8				
3/4 LOAD EFF.	96.2	IP	56	MAX CORR KVAR	25.0	GUARANTEED EFFICIENCY	95		
TEMP CODE	T3	TEMP =	200						
CHP HZ	60-90	CT HZ	15-60	VT HZ	0-60				
INVERTER-TEMP-CODE	T3								
SER.NO.		MOTOR WEIGHT							

000613007EX

CAT NO	ECP844156T-4	SPEC NO.	A44-8392-1496
NO. ROTOR BARS	71	GREASE TYPE	POLYREX EM
NO. SLOTS	90	NL AMPS AT RATED VOLTAGE	42.5
5 YEAR WARRANTY		WINDING RES @25 C	.03239
MFG. DATE		SER.NO	

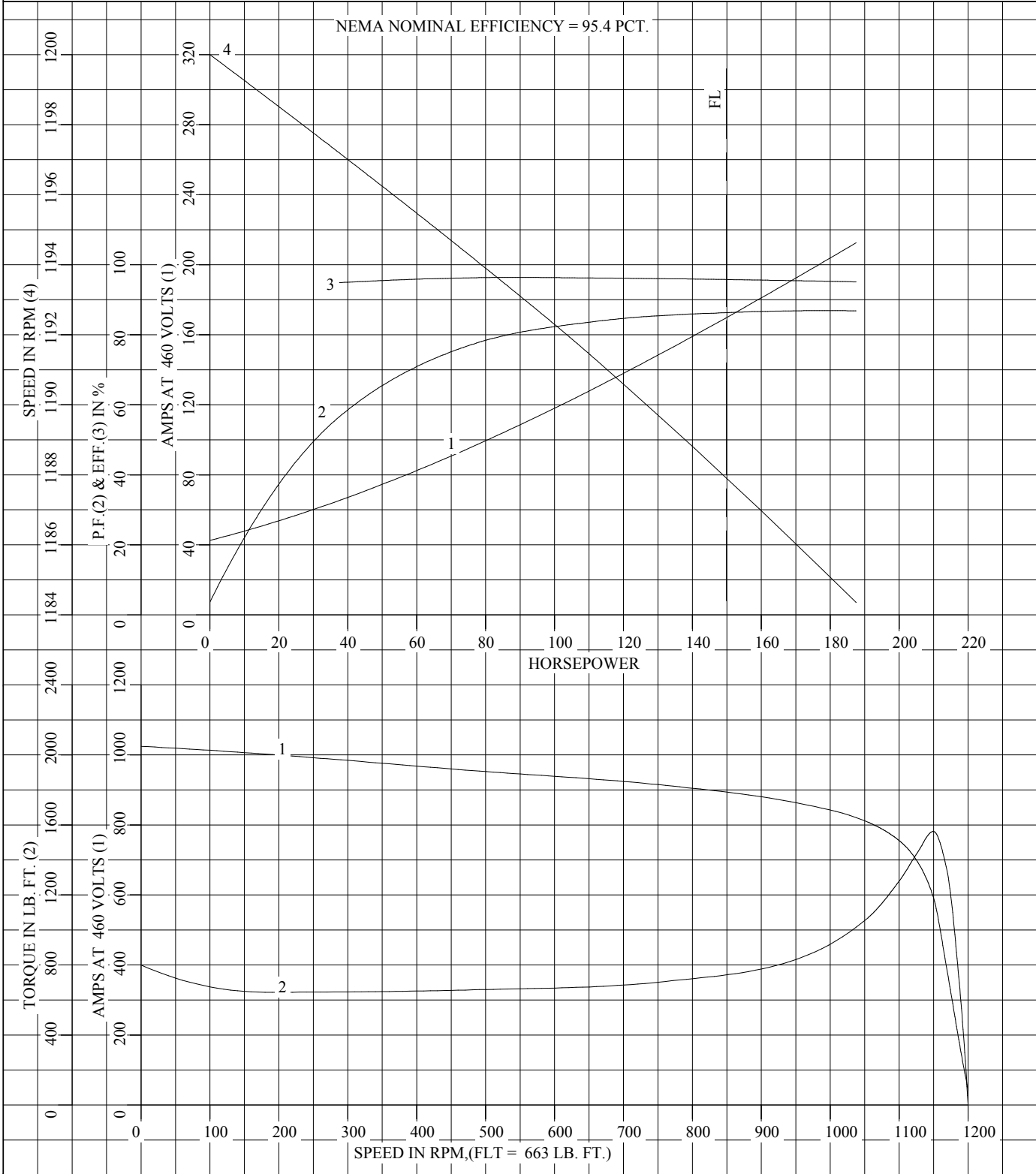
REL. S.O.	FRAME	HP	TYPE	PHASE/ HERTZ	RPM	VOLTS
	447T	150	P	3/60	1190	460
AMPS	DUTY	AMB °C/ INSUL.	S.F.	NEMA DESIGN	CODE LETTER	ENCL.
170	CONT	40/F	1.15	B	F	TEFC
E/S	ROTOR	TEST S.O.	TEST DATE	STATOR RES. @25 °C OHMS (BETWEEN LINES)		
833241	418143080ME	---	---	.0324		
PERFORMANCE						
LOAD	HP	AMPERES	RPM	% POWER FACTOR	% EFFICIENCY	
NO LOAD	0	42.5	1200	3.70	0	
1/4	37.6	65.5	1197	56.6	94.9	
2/4	75.1	94.9	1194	76.9	96.3	
3/4	112	130	1191	83.9	96.2	
4/4	150	170	1188	86.3	95.8	
5/4	188	213	1184	86.8	95.1	
SPEED TORQUE						
		RPM	TORQUE % FULL LOAD	TORQUE LB.-FT.	AMPERES	
LOCKED ROTOR		0	121	799	1025	
PULL UP		180	97.2	644	1002	
BREAKDOWN		1150	236	1563	592	
FULL LOAD		1188	100	663	170	
<p>AMPERES SHOWN FOR 460. VOLT CONNECTION. IF OTHER VOLTAGE CONNECTIONS ARE AVAILABLE, THE AMPERES WILL VARY INVERSELY WITH THE RATED VOLTAGE</p> <p>REMARKS: TYPICAL DATA NEMA NOMINAL EFFICIENCY = 95.4 PCT.</p>						
		DR. BY W. L. SMITH CK. BY J. J. HARRISON APP. BY W. L. SMITH DATE 04/27/10		A-C MOTOR PERFORMANCE A44WG1496-R001 DATA		
				ISSUE DATE 12/18/10		

FRAME 447T
HP 150
TYPE P
PHASE/HERTZ 3/60

RPM 1190
VOLTS 460
AMPS 170
DUTY CONT
AMB °C/INSUL 40/F

NEMA DESIGN B
CODE LETTER F
ENCLOSURE TEFC
E/S 833241

TEST S.O. TYPICAL DATA
TEST DATE ---
STATOR RES. @ 25 °C .0324
OHMS (BETWEEN LINES)



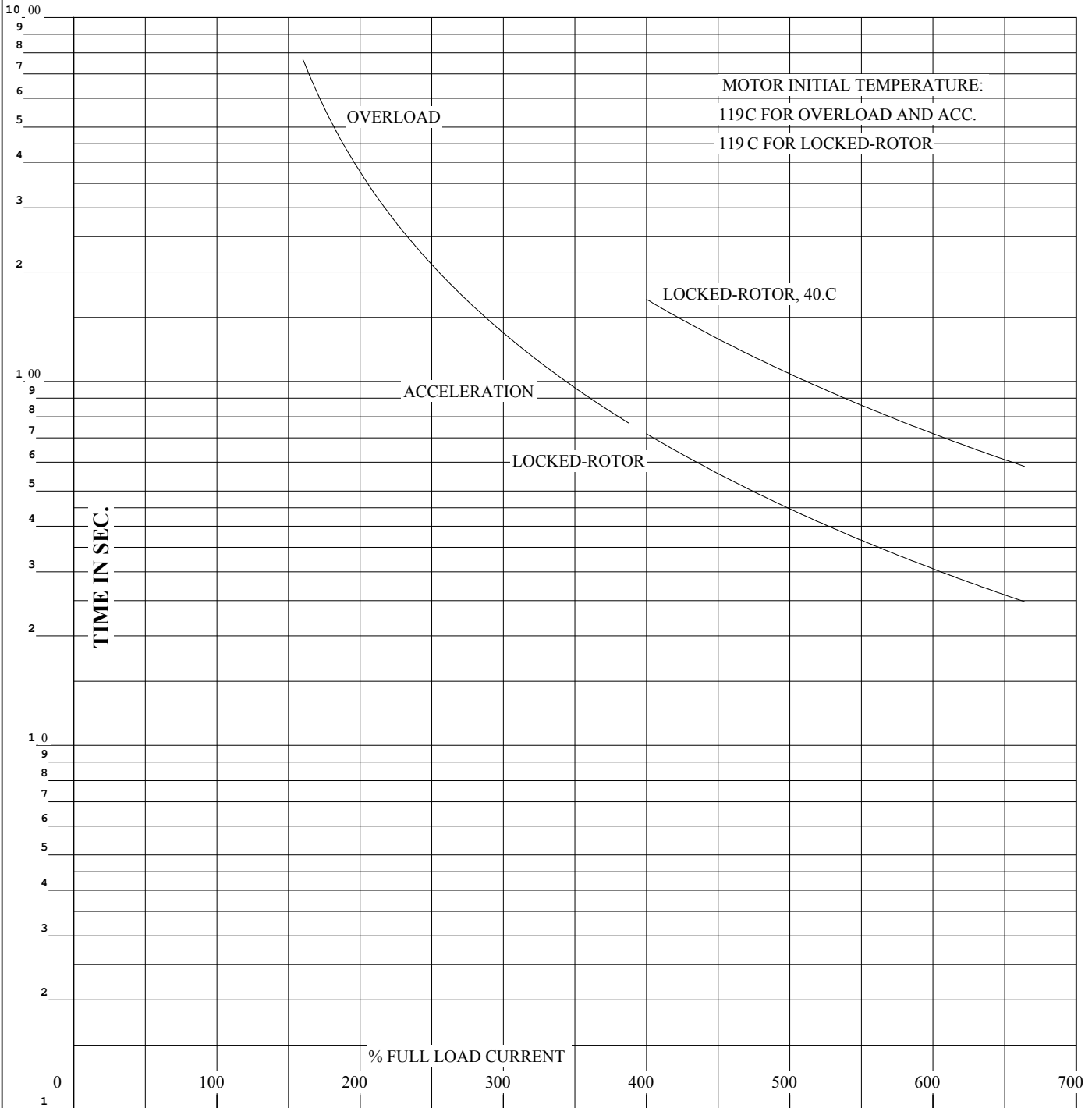
AMPERES SHOWN FOR 460 VOLT CONNECTION, IF OTHER VOLTAGE CONNECTIONS ARE AVAILABLE, THE AMPERES WILL VARY INVERSELY WITH THE RATED VOLTAGE.



DR. BY W. L. SMITH
CK. BY J.J.HARRISON
APP. BY W. L. SMITH
DATE 04/27/10

**A-C MOTOR
PERFORMANCE CURVES** A44WG1496-R001
ISSUE DATE 12/18/10

REL. S.O.	RPM 1190	S.F. 1.15	ROTOR 418143080ME
FRAME 447T	VOLTS 460	NEMA DESIGN B	TEST S.O. TYPICAL DATA
HP 150	AMPS 170	CODE LETTER F	TEST DATE ---
TYPE P	DUTY CONT	ENCLOSURE TEFC	STATOR RES. @ 25 °C .0324
PHASE/HERTZ 3/60	AMB °C/INSUL 40/F	E/S 833241	OHMS (BETWEEN LINES)



THERMAL LIMIT CURVE

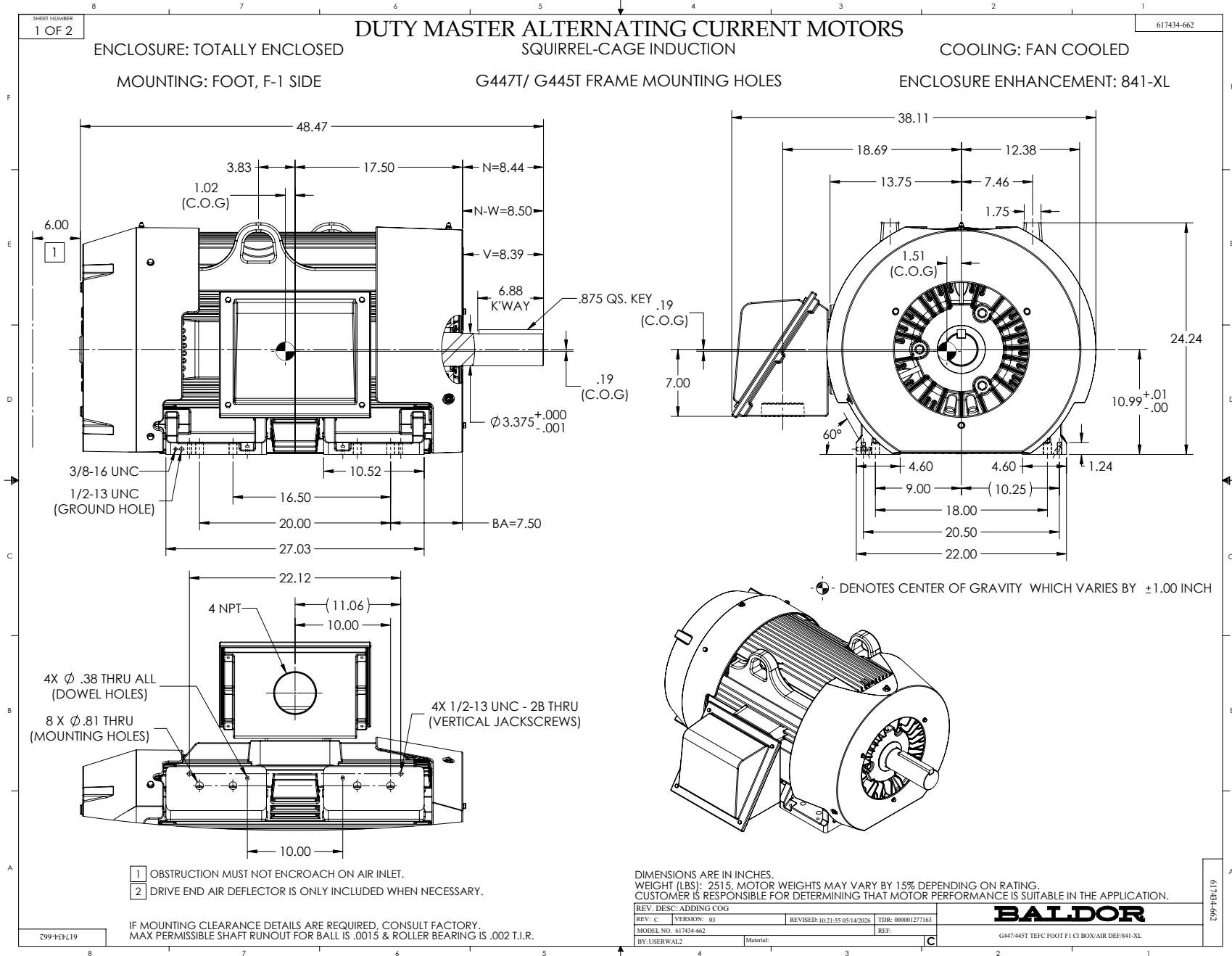
REMARKS: NEMA NOMINAL EFFICIENCY = 95.4 PCT.

AMPERES SHOWN FOR 460 VOLT CONNECTION, IF OTHER VOLTAGE CONNECTIONS ARE AVAILABLE, THE AMPERES WILL VARY INVERSELY WITH THE RATED VOLTAGE.



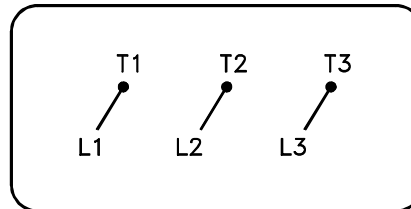
DR. BY	W. L. SMITH
CK. BY	J.J.HARRISON
APP. BY	W. L. SMITH
DATE	04/27/10

**A-C MOTOR
PERFORMANCE A44WG1496-R001
CURVES** ISSUE DATE 12/18/10



416820-036

A-C MOTOR
CONNECTION DIAGRAM
STANDARD 3 LEAD CONNECTED



(N.P. 1575-BA)

416820-036

REV. DESC: LOADED TO BUS, C/R 335225		
REV. LTR: -	VERSION: 00	TDR: 000000538207
FILE: \MGA\00000\682	REVISED: 11: 54: 06 04/30/2010	
MTL: -	BY: RAGRA	

BALDOR

CONN DIAG - STANDARD 3 LEAD
SH 1 of 1