

ABB BALDOR RELIANCE III

Customer information packet

ECP84410T-5

125HP, 1785RPM, 3PH, 60HZ, 444T, A44076M, TEFC

Class - CLI GP A,B,C,D

Division - Division II

Specifications

Enclosure	TEFC
Frame	444T
Frame Material	Iron
Frequency	60.00 Hz
Haz Area Class and Group	CLI GP A,B,C,D
Haz Area Division	Division II
Motor Letter Type	Three Phase
Output @ Frequency	125.000 HP @ 60 HZ
Phase	3
Synchronous Speed @ Frequency	1800 RPM @ 60 HZ
Voltage @ Frequency	575.0 V @ 60 HZ
Agency Approvals	CCSA US UR
Ambient Temperature	40 °C
Auxiliary Box	NO AUXILLARY BOX
Base Indicator	Rigid
Bearing Grease Type	Polyrex EM (-20F +300F)
Constant Torque Speed Range	10-60
Current @ Voltage	115.000 A @ 575.0 V
Design Code	B
Drip Cover	No Drip Cover
Duty Rating	CONT
Efficiency @ 100% Load	95.4 %
Feedback Device	NO FEEDBACK
Haz Area Temp Code	T3
Heater Indicator	No Heater
High Voltage Full Load Amps	115.0 a
Insulation Class	F
Inverter Code	Not Inverter
KVA Code	G
Lifting Lugs	Standard Lifting Lugs
Motor Lead Quantity/Wire Size	3 @ 1 AWG

Part Detail

Revision	B
Type	AC
Mech. spec.	
Base	
Status	PRD/A
Elec. spec.	A44WG3904
Layout	617434-660
Eff. date	12-10-2025
CD Diagram	416820-036
Poles	04
Leads	3#1
Proprietary	False
Created date	03-10-2022

Motor Standards	None
Motor Type	A44076M
Mounting Arrangement	F1
No Load Current	36.6 a
Number of Poles	4
Overall Length	44.97 IN
Power Factor	85
Pulley End Bearing Type	Ball
Pulley Face Code	Standard
Service Factor	1.15
Shaft Diameter	3.375 IN
Shaft Ground Indicator	No Shaft Grounding
Shaft Rotation	Phase Seq-Std Rot (CCWODE)
Shaft Slinger Indicator	No Slinger
Speed	1785 rpm
Speed Code	Single Speed
Starting Method	Direct on line
Thermal Device - Bearing	None
Thermal Device - Winding	None

Nameplate

NP4566

CAT NO	ECP84410T-5	SPEC NO.	A44-0000-3904						
HP	125	AMPS	115	VOLTS	575	DESIGN	B		
FRAME SIZE	444T	RPM	1785	HZ	60	AMB	40	SF	1.15
D.E. BRG.DATA	6318	O.D.E. BRG.DATA	6318	PH	3	DUTY	CONT	INSUL.CLASS	F
D.E. BRG.	90BC03J30X	TYPE	P	ENCL	TEFC	CODE	G		
O.D.E. BRG.	90BC03J30X	POWER FACTOR	85			NEMA-NOM-EFFICIENCY	95.4		
3/4 LOAD EFF.	95.7	IP	56	MAX CORR KVAR	27		GUARANTEED EFFICIENCY	94.5	
TEMP CODE	T3	TEMP =	200						
CHP HZ	60-90	CT HZ	10-60	VT HZ	0-60				
INVERTER-TEMP-CODE	T3								
SER.NO.				MOTOR WEIGHT					

000613007EX

CAT NO	ECP84410T-5	SPEC NO.	A44-0000-3904	
NO. ROTOR BARS	58	GREASE TYPE	POLYREX EM	
NO. SLOTS	72	NL AMPS AT RATED VOLTAGE	36.6	
5 YEAR WARRANTY		WINDING RES @25 C	0.0593	OHMS
MFG. DATE		SER.NO		

CUSTOMER INFORMATION PACKET		ECP84410T-5 - 125HP, 1785RPM, 3PH, 60HZ, 444T, A44076M, TEFC				
FRAME	HP	TYPE	PHASE/ HERTZ	RPM	VOLTS	
445	125	P	3/60	1785	575	

AMPS	DUTY	AMB °C/ INSUL	S.F.	NEMA DESIGN	CODE LETTER	ENCLOSURE
115	CONT	40/F	1.15	B	G	TEFC

E/S	ROTOR	TEST S.O.	TEST DATE	STATOR RES. @25 °C OHMS (BETWEEN LINES)	
498874	418143052KE	---	---	.0599	

PERFORMANCE


LOAD	HP	AMPERES	RPM	% POWER FACTOR	% EFFICIENCY
NO LOAD	0	35.8	1800	4.44	0
1/4	31.3	49.4	1796	51.1	92.8
2/4	62.5	67.3	1792	73.0	95.3
3/4	93.7	89.8	1788	81.7	95.7
4/4	125	115	1784	85.3	95.5
5/4	156	142	1780	86.6	95.1

SPEED TORQUE

	RPM	TORQUE % FULL LOAD	TORQUE LB.-FT.	AMPERES
LOCKED ROTOR	0	133	489	713
PULL UP	270	114	420	700
BREAKDOWN	1729	290	1067	400
FULL LOAD	1784	100	368	115

AMPERES SHOWN FOR 575 VOLT CONNECTION. IF OTHER CONNECTIONS ARE AVAILABLE, THE AMPERES WILL VARY INVERSELY WITH THE RATED VOLTAGE.

CALCULATED DATA
NEMA NOMINAL EFFICIENCY = 95.4PCT.

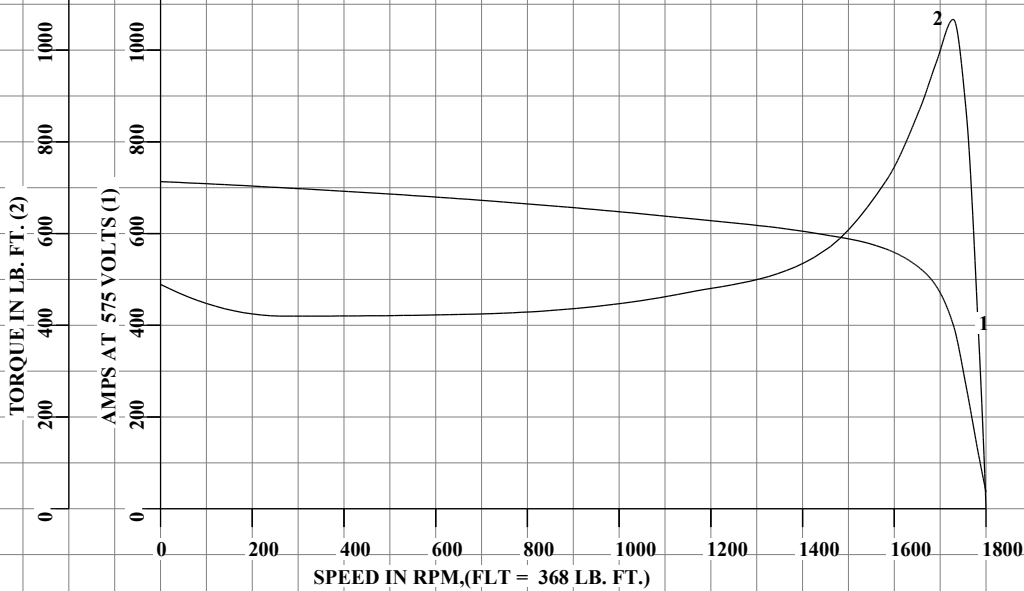
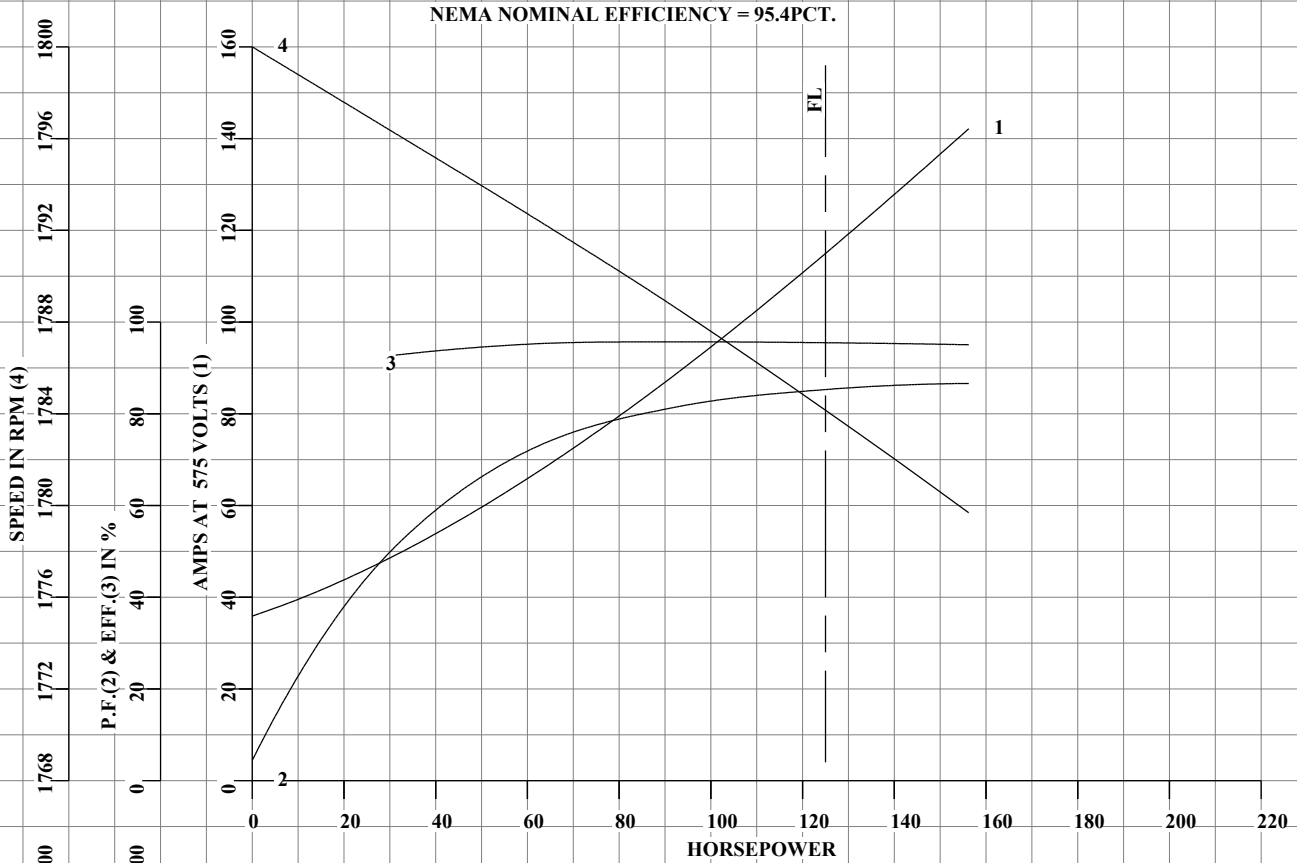
	DRAWN BY: <u>C. JAMISON</u>	AC MOTOR PERFORMANCE DATA	A44WG3904-R001
	CHECKED BY: <u>W. SMITH</u> APPROVED BY: <u>W. SMITH</u> DATE: <u>04/09/12</u>		

FRAME 445
HP 125
TYPE P
PHASE / HERTZ 3/60

RPM 1785
VOLTS 575
AMPS 115
DUTY CONT
AMB °C / INSUL 40/F

S.F. 1.15
NEMA DESIGN B
CODE LETTER G
ENCLOSURE TEFC
E/S 498874

ROTOR 418143052KE
TEST S.O. CALCULATED DATA
TEST DATE ---
STATOR RES. @ 25°C .0599
OHMS (BETWEEN LINES)



AMPERES SHOWN FOR 575 VOLT CONNECTION, IF OTHER VOLTAGE CONNECTIONS ARE AVAILABLE, THE AMPERES WILL VARY INVERSELY WITH THE RATED VOLTAGE.



DRAWN BY: C. JAMISON
 CHECKED BY: W. SMITH
 APPROVED BY: W. SMITH
 DATE: 04/09/12

AC MOTOR
PERFORMANCE
DATA

A44WG3904-R001

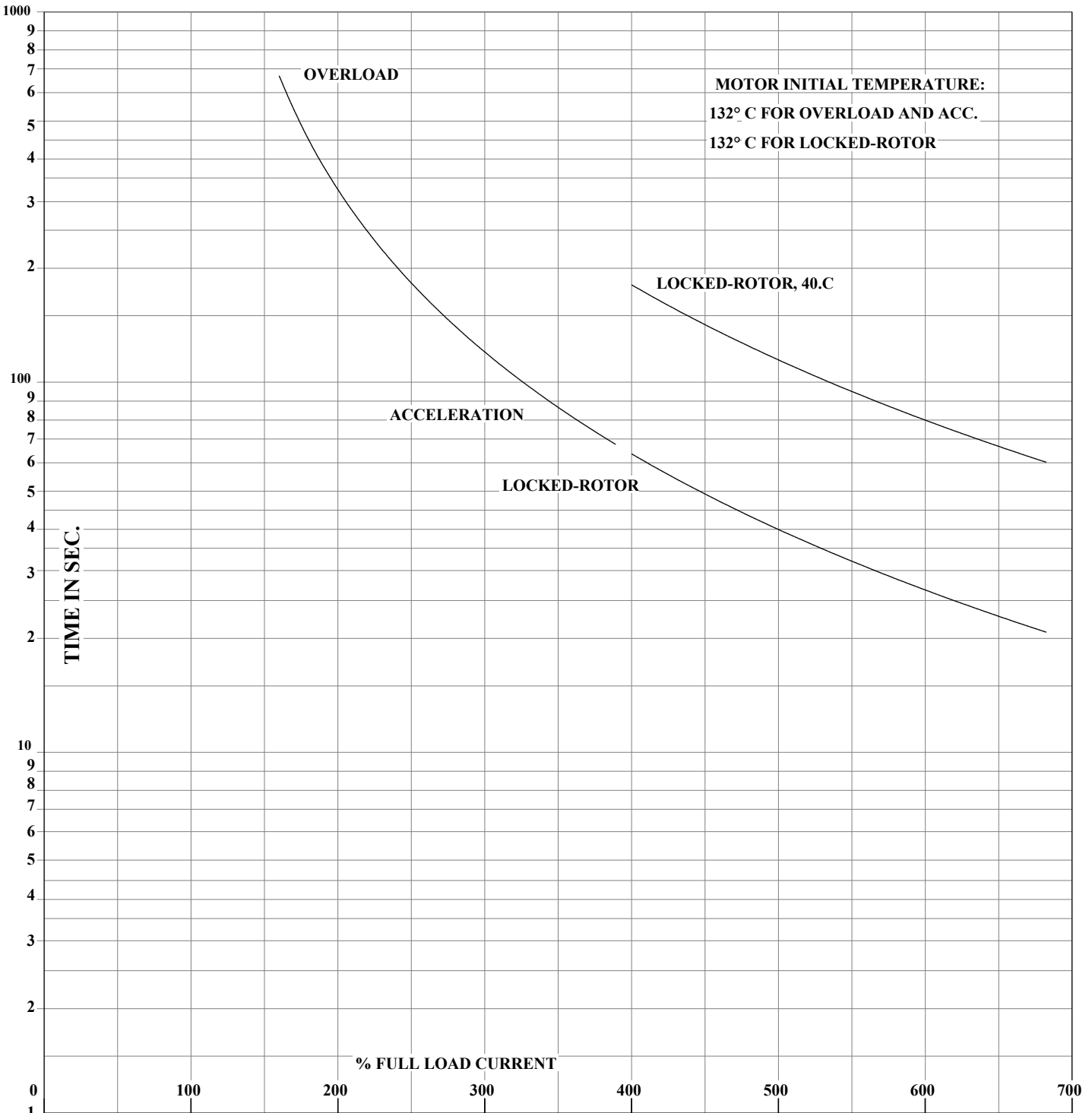
ISSUE DATE 04/09/12

FRAME 445
HP 125
TYPE P
PHASE / HERTZ 3/60

RPM 1785
VOLTS 575
AMPS 115
DUTY CONT
AMB °C / INSUL 40/F

S.F. 1.15
NEMA DESIGN B
CODE LETTER G
ENCLOSURE TEFC
E/S 498874

ROTOR 418143052KE
TEST S.O. CALCULATED DATA
TEST DATE ---
STATOR RES. @ 25°C .0599
OHMS (BETWEEN LINES)



THERMAL LIMIT CURVE
NEMA NOMINAL EFFICIENCY = 95.4PCT.

AMPERES SHOWN FOR 575 VOLT CONNECTION, IF OTHER VOLTAGE CONNECTIONS ARE AVAILABLE, THE AMPERES WILL VARY INVERSELY WITH THE RATED VOLTAGE.

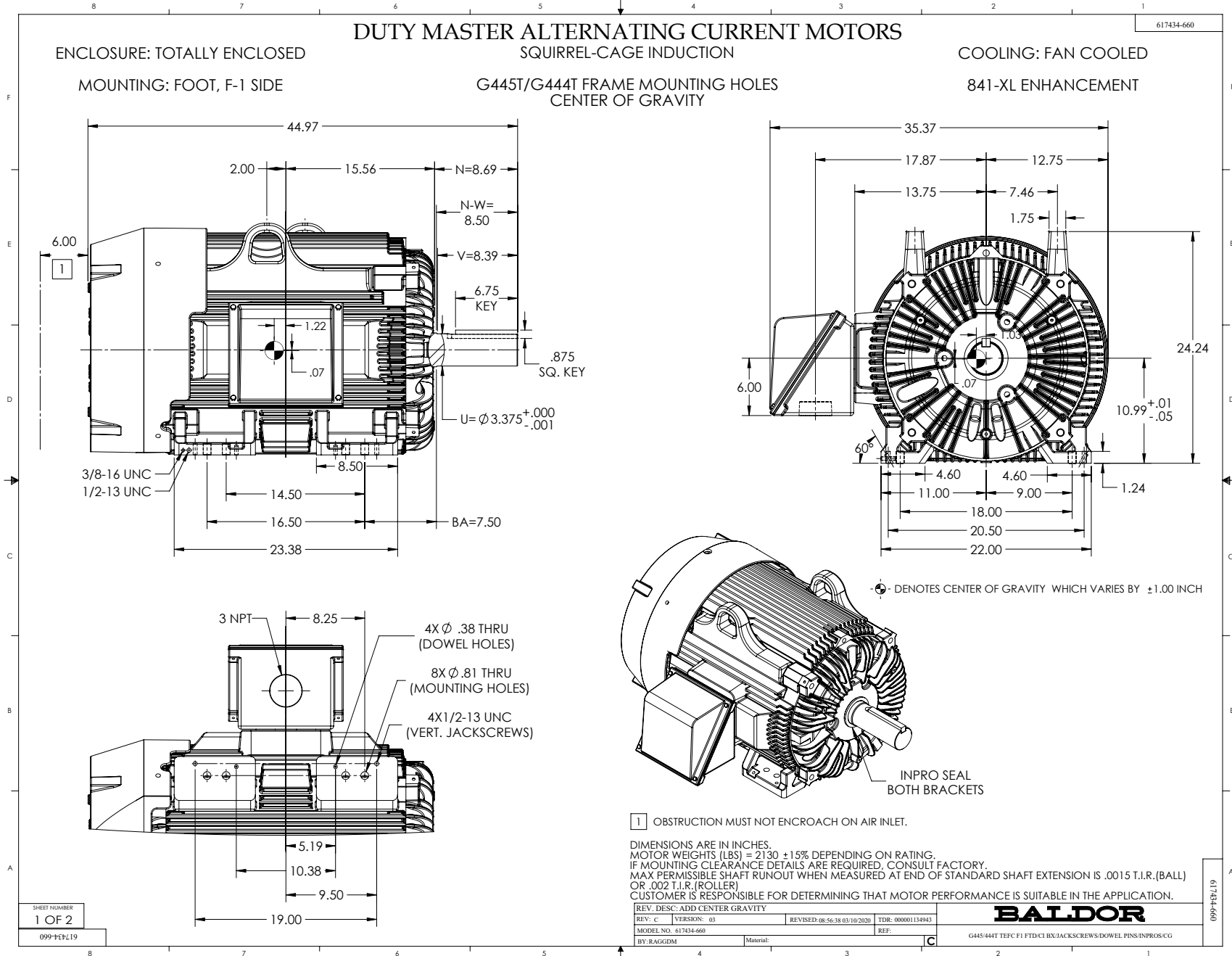


DRAWN BY: C. JAMISON
CHECKED BY: W. SMITH
APPROVED BY: W. SMITH
DATE: 04/09/12

**AC MOTOR
PERFORMANCE
DATA**

A44WG3904-R001

ISSUE DATE 04/09/12



617434-660

ENCLOSURE: TOTALLY ENCLOSED

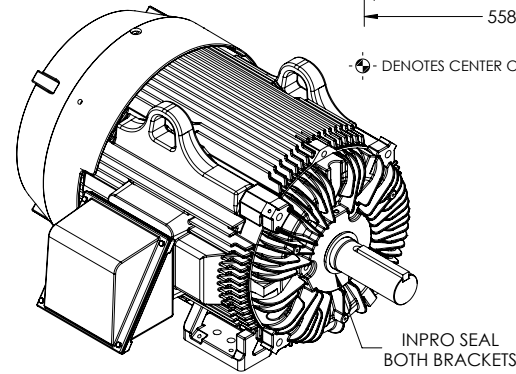
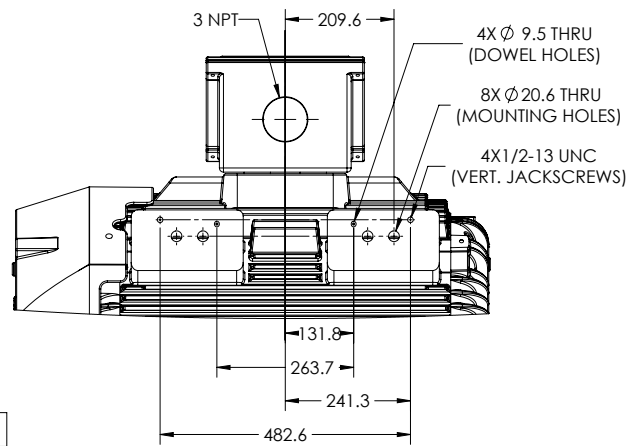
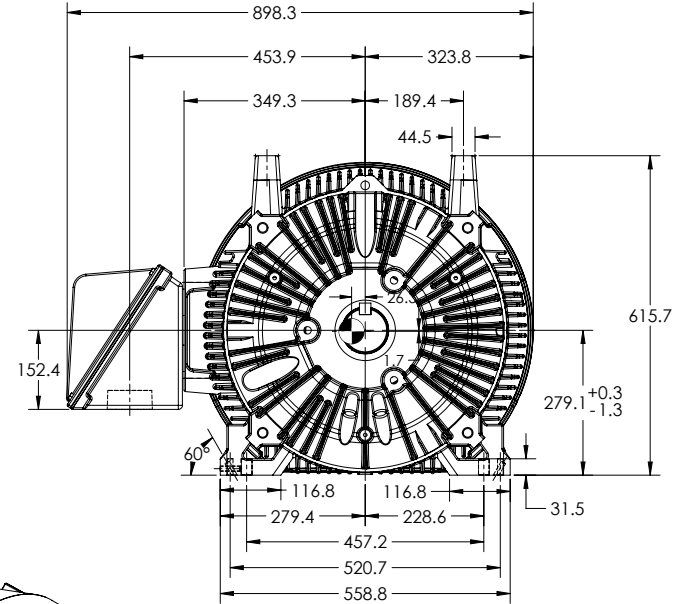
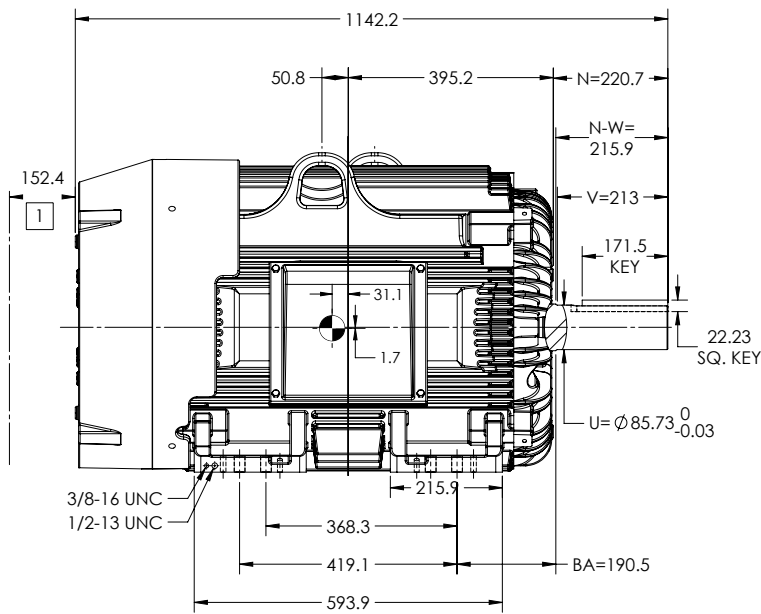
DUTY MASTER ALTERNATING CURRENT MOTORS
SQUIRREL-CAGE INDUCTION

COOLING: FAN COOLED

MOUNTING: FOOT, F-1 SIDE

G445T/G444T FRAME MOUNTING HOLES
CENTER OF GRAVITY

841-XL ENHANCEMENT



⊙ DENOTES CENTER OF GRAVITY WHICH VARIES BY ±1.00 INCH

1 OBSTRUCTION MUST NOT ENCR OACH ON AIR INLET.

DIMENSIONS ARE IN MILLIMETERS.
MOTOR WEIGHTS (KGS) = 970 ±15% DEPENDING ON RATING.
IF MOUNTING CLEARANCE DETAILS ARE REQUIRED, CONSULT FACTORY.
MAX PERMISSIBLE SHAFT RUNOUT WHEN MEASURED AT END OF STANDARD SHAFT EXTENSION IS .04 T.I.R.(BALL)
OR .05 T.I.R.(ROLLER)
CUSTOMER IS RESPONSIBLE FOR DETERMINING THAT MOTOR PERFORMANCE IS SUITABLE IN THE APPLICATION.

SHEET NUMBER
2 OF 2

099-F72-119

REV. DESC: ADD CENTER GRAVITY			
REV: c	VERSION: 03	REVISED: 08-56-38 03/10/2020	TDR: 000001134943
MODEL NO. 617434-660		REF:	
BY: RAGGDM	Material:	C	

BALDOR

G445/444T TEFC F1 FTD C1 BX JACKSCREWS/DOWEL PINS-INPRO/CG

617434-660

416820-036

A-C MOTOR
CONNECTION DIAGRAM
STANDARD 3 LEAD CONNECTED



(N.P. 1575-BA)

416820-036

REV. DESC: LOADED TO BUS, C/R 335225		
REV. LTR: -	VERSION: 00	TDR: 000000538207
FILE: \MGA\00000\682	REVISED: 11: 54: 06 04/30/2010	
MTL: -	BY: RAGRA	

BALDOR
CONN DIAG - STANDARD 3 LEAD
SH 1 of 1