

ABB BALDOR RELIANCE III

Customer information packet

ECP84408T-4

250HP, 1785RPM, 3PH, 60HZ, 449T, A44160M, TEFC

Class - CLI GP A,B,C,D

Division - Division II

Specifications

Enclosure	TEFC
Frame	449T
Frame Material	Iron
Frequency	60.00 Hz
Haz Area Class and Group	CLI GP A,B,C,D
Haz Area Division	Division II
Motor Letter Type	Three Phase
Output @ Frequency	250.000 HP @ 60 HZ
Phase	3
Synchronous Speed @ Frequency	1800 RPM @ 60 HZ
Voltage @ Frequency	460.0 V @ 60 HZ
Agency Approvals	C UR US CCSA US CCSAUSEEV CURUS
Ambient Temperature	40 °C
Auxiliary Box	NO AUXILLARY BOX
Base Indicator	Rigid
Bearing Grease Type	Polyrex EM (-20F +300F)
Constant Torque Speed Range	30-60
Current @ Voltage	274.000 A @ 460.0 V
Design Code	B
Drip Cover	No Drip Cover
Duty Rating	CONT
Efficiency @ 100% Load	96.2 %
Feedback Device	NO FEEDBACK
Haz Area Temp Code	T3
Heater Indicator	No Heater
High Voltage Full Load Amps	274.0 a
Insulation Class	F
Inverter Code	Inverter Ready
KVA Code	G

Part Detail

Revision	A
Type	AC
Mech. spec.	
Base	
Status	PRD/A
Elec. spec.	A44WG5175
Layout	617434-665
Eff. date	07-14-2025
CD Diagram	416820-036
Poles	04
Leads	3#2/0 (02 per group)
Proprietary	False
Created date	05-20-2025

Lifting Lugs	No Lifting Lugs
Motor Lead Quantity/Wire Size	6 @ 2/0 AWG
Motor Standards	None
Motor Type	A44160M
Mounting Arrangement	F1
No Load Current	79.3 a
Number of Poles	4
Overall Length	53.47 IN
Power Factor	88
Pulley End Bearing Type	Ball
Pulley Face Code	Standard
Service Factor	1.15
Shaft Diameter	3.375 IN
Shaft Ground Indicator	No Shaft Grounding
Shaft Rotation	Phase Seq-Std Rot (CCWODE)
Shaft Slinger Indicator	No Slinger
Speed	1785 rpm
Speed Code	Single Speed
Starting Method	Direct on line
Thermal Device - Bearing	None
Thermal Device - Winding	None

Nameplate

NP4566

CAT NO	ECP84408T-4	SPEC NO.	A44-0001-5175						
HP	250	AMPS	274	VOLTS	460	DESIGN	B		
FRAME SIZE	449T	RPM	1785	HZ	60	AMB	40	SF	1.15
D.E. BRG.DATA	6318	O.D.E. BRG.DATA	6318	PH	3	DUTY	CONT	INSUL.CLASS	F
D.E. BRG.	90BC03J30X	TYPE	ENCL	TEFC	CODE	G			
O.D.E. BRG.	90BC03J30X	POWER FACTOR	88	NEMA-NOM-EFFICIENCY	96.2				
3/4 LOAD EFF.	96.5	IP	56	MAX CORR KVAR	38	GUARANTEED EFFICIENCY	95.4		
TEMP CODE	T3	TEMP =	200						
CHP HZ	60-90	CT HZ	30-60	VT HZ	0-60				
INVERTER-TEMP-CODE	T3								
SER.NO.		MOTOR WEIGHT							

000613007EX

CAT NO	ECP84408T-4	SPEC NO.	A44-0001-5175	
NO. ROTOR BARS	58	GREASE TYPE	POLYREX EM	
NO. SLOTS	72	NL AMPS AT RATED VOLTAGE	79.3	
5 YEAR WARRANTY		WINDING RES @25 C	.0114	OHMS
MFG. DATE		SER.NO		

CUSTOMER INFORMATION PACKET ECP84408T-4 - 250HP, 1785RPM, 3PH, 60HZ, 449T, A44160M, TEFC						
FRAME	HP	TYPE	PHASE/ HERTZ	RPM	VOLTS	
449T	250	P	3/60	1785	460	

AMPS	DUTY	AMB °C/ INSUL	S.F.	NEMA DESIGN	CODE LETTER	ENCLOSURE
274	CONT	40/F	1.15	B	G	TEFC

E/S	ROTOR	TEST S.O.	TEST DATE	STATOR RES. @25 °C OHMS (BETWEEN LINES)	
445175	418143052ZE	---	---	.0114	

PERFORMANCE


LOAD	HP	AMPERES	RPM	% POWER FACTOR	% EFFICIENCY
NO LOAD	0	79.3	1800	4.00	0
1/4	62.5	103	1796	60.2	94.3
2/4	125	151	1793	80.6	96.3
3/4	187	210	1789	86.6	96.5
4/4	250	274	1785	88.4	96.4
5/4	313	342	1781	89.1	96.0

SPEED TORQUE

	RPM	TORQUE % FULL LOAD	TORQUE LB.-FT.	AMPERES
LOCKED ROTOR	0	163	1195	1825
PULL UP	1200	134	988	1536
BREAKDOWN	1726	276	2029	952
FULL LOAD	1785	100	735	274

AMPERES SHOWN FOR 460 VOLT CONNECTION. IF OTHER CONNECTIONS ARE AVAILABLE, THE AMPERES WILL VARY INVERSELY WITH THE RATED VOLTAGE.

TYPICAL DATA
XE MOTOR-NEMA NOM. EFF. 96.2 PCT.

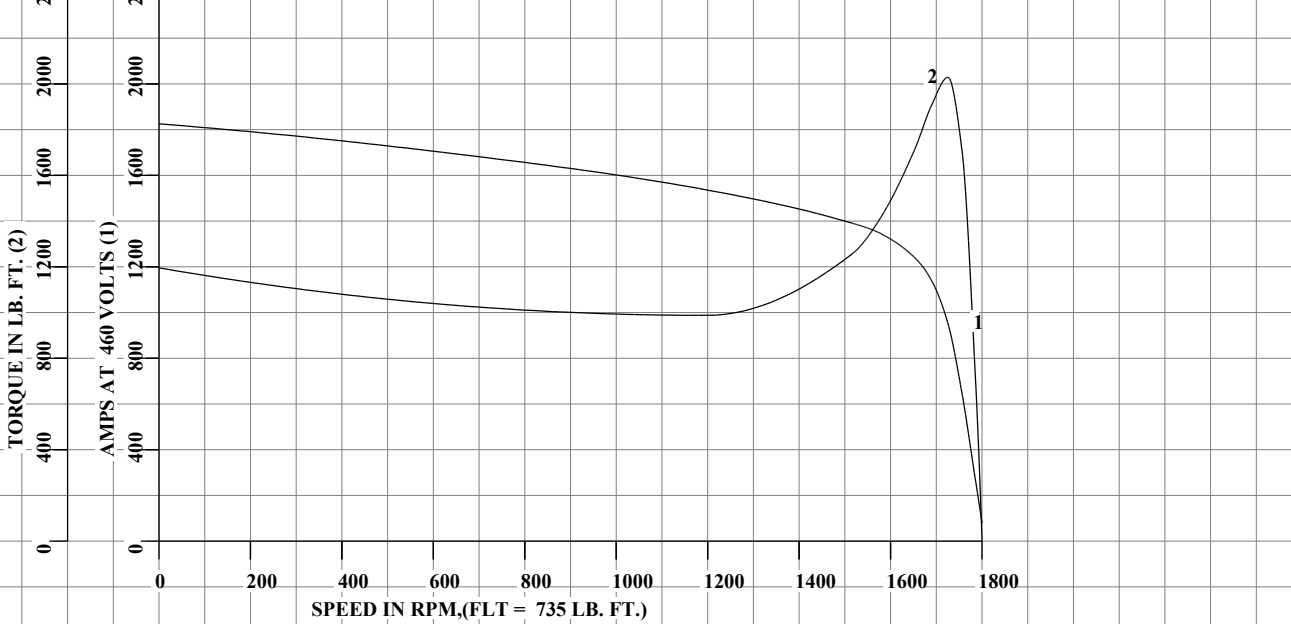
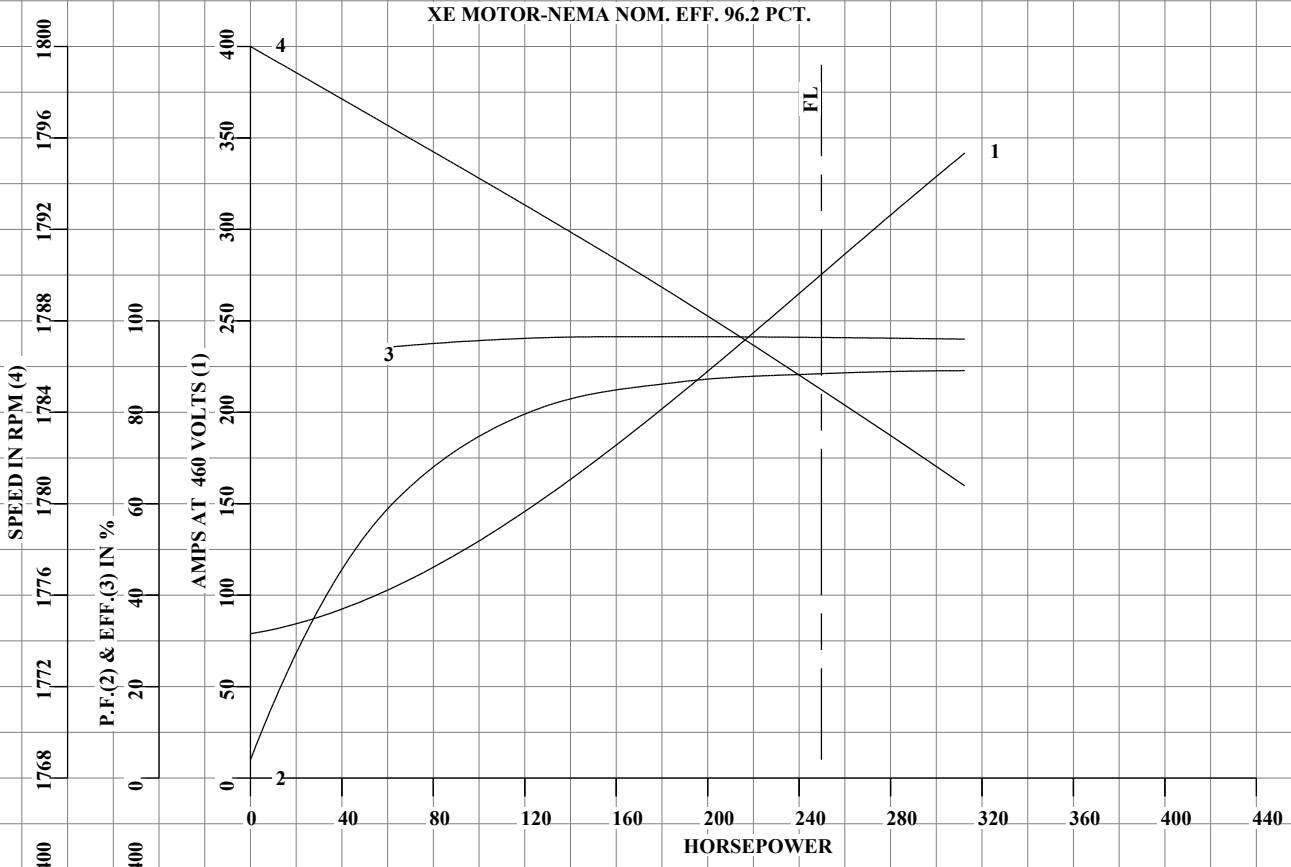
	DRAWN BY: <u>G. R. WEBB</u>	AC MOTOR PERFORMANCE DATA	A44WG5175-R002
	CHECKED BY: <u>C. E. JAMISON</u>		
	APPROVED BY: <u>W. L. SMITH</u>		DATE ISSUED 04/08/26
	DATE: <u>07/17/15</u>		

FRAME 449T
HP 250
TYPE P
PHASE / HERTZ 3/60

RPM 1785
VOLTS 460
AMPS 274
DUTY CONT
AMB °C / INSUL 40/F

S.F. 1.15
NEMA DESIGN B
CODE LETTER G
ENCLOSURE TEFC
E/S 445175

ROTOR 418143052ZE
TEST S.O. TYPICAL DATA
TEST DATE ---
STATOR RES. @ 25°C .0114
OHMS (BETWEEN LINES)



AMPERES SHOWN FOR 460 VOLT CONNECTION, IF OTHER VOLTAGE CONNECTIONS ARE AVAILABLE, THE AMPERES WILL VARY INVERSELY WITH THE RATED VOLTAGE.



DRAWN BY: G. R. WEBB
 CHECKED BY: C. E. JAMISON
 APPROVED BY: W. L. SMITH
 DATE: 07/17/15

**AC MOTOR
PERFORMANCE
DATA**

A44WG5175-R002

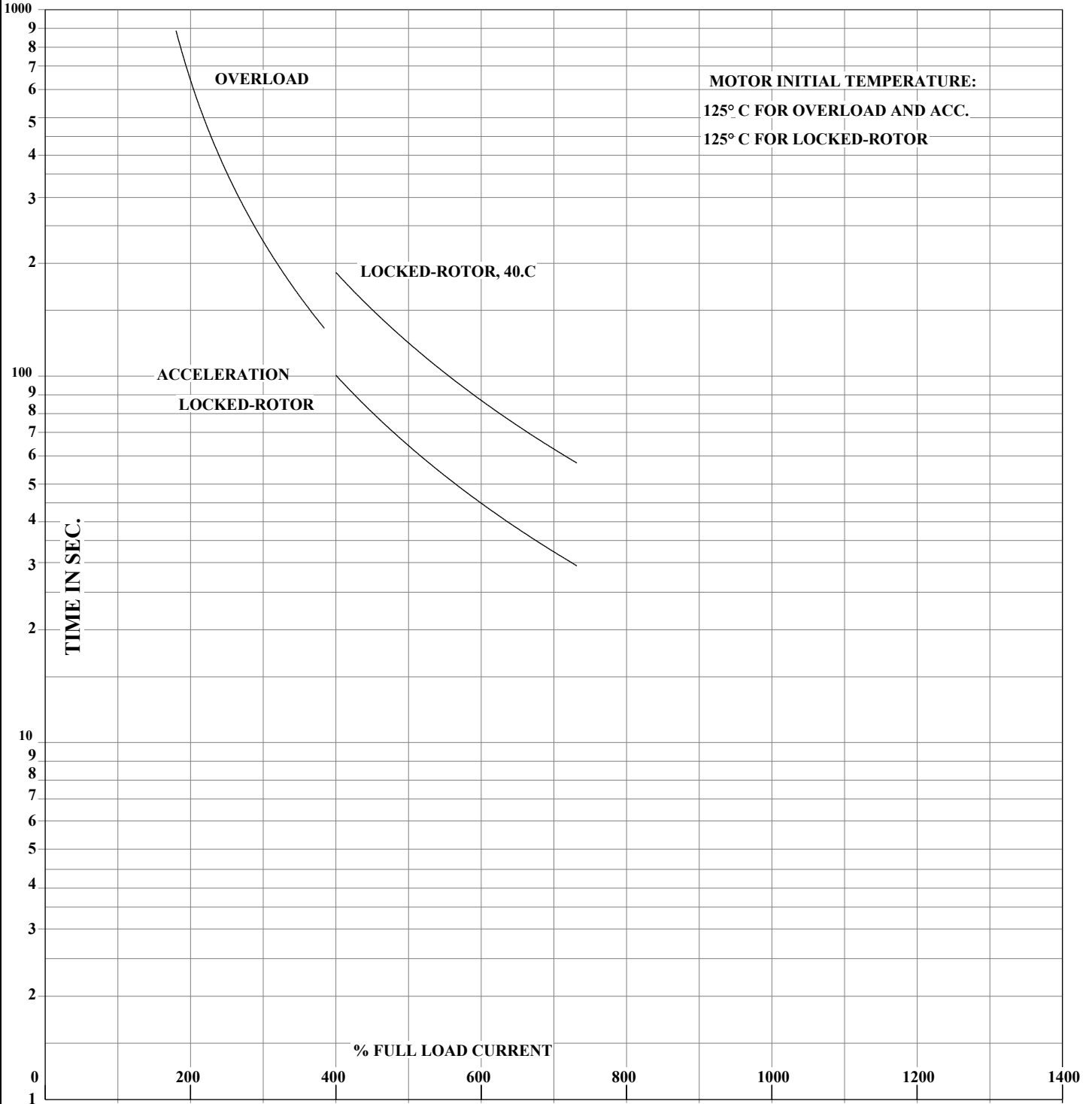
ISSUE DATE 04/08/26

FRAME 449T
HP 250
TYPE P
PHASE / HERTZ 3/60

RPM 1785
VOLTS 460
AMPS 274
DUTY CONT
AMB °C / INSUL 40/F

S.F. 1.15
NEMA DESIGN B
CODE LETTER G
ENCLOSURE TEFC
E/S 445175

ROTOR 418143052ZE
TEST S.O. TYPICAL DATA
TEST DATE ---
STATOR RES. @ 25°C .0114
OHMS (BETWEEN LINES)



THERMAL LIMIT CURVE
XE MOTOR-NEMA NOM. EFF. 96.2 PCT.

AMPERES SHOWN FOR 460 VOLT CONNECTION, IF OTHER VOLTAGE CONNECTIONS ARE AVAILABLE, THE AMPERES WILL VARY INVERSELY WITH THE RATED VOLTAGE.

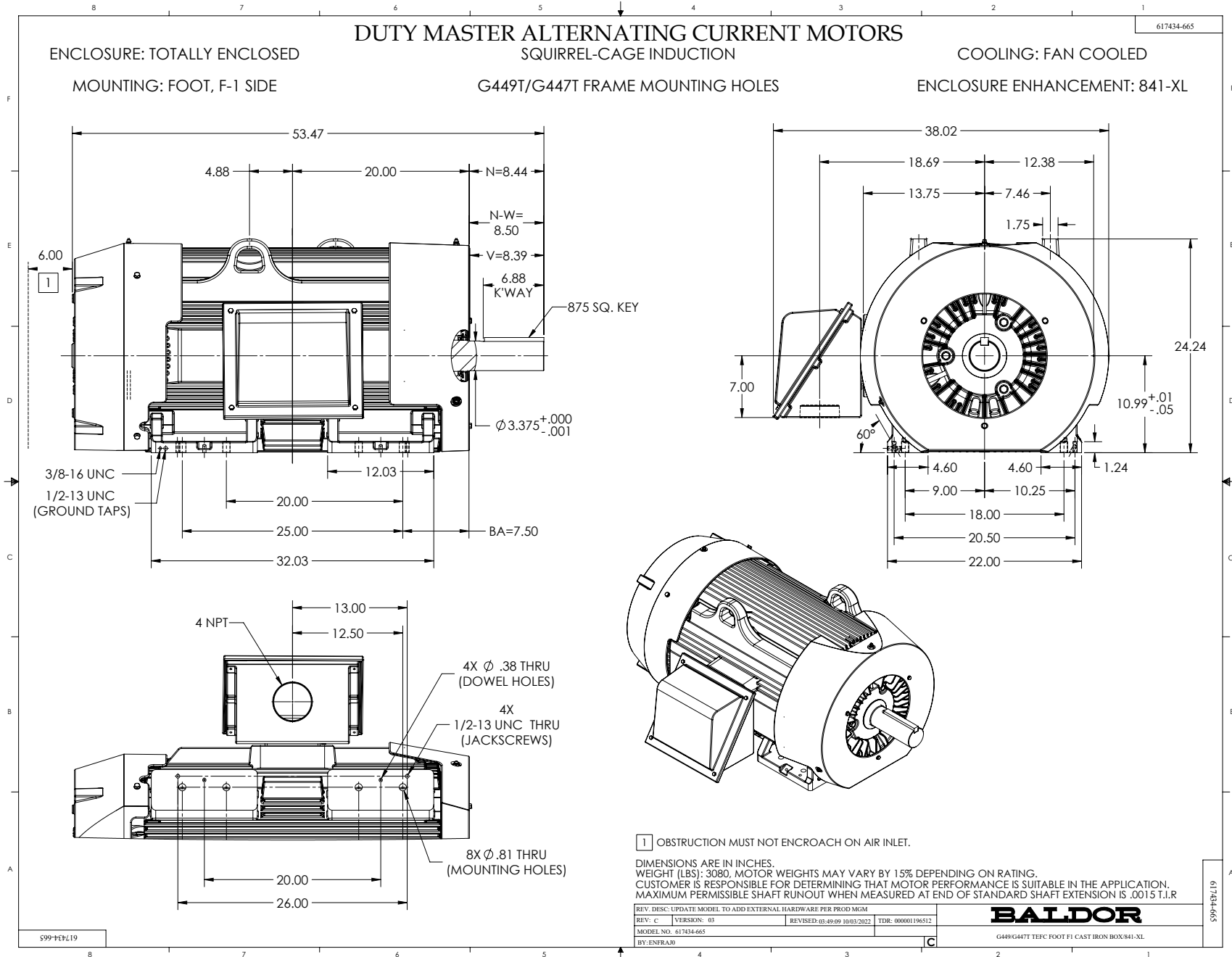


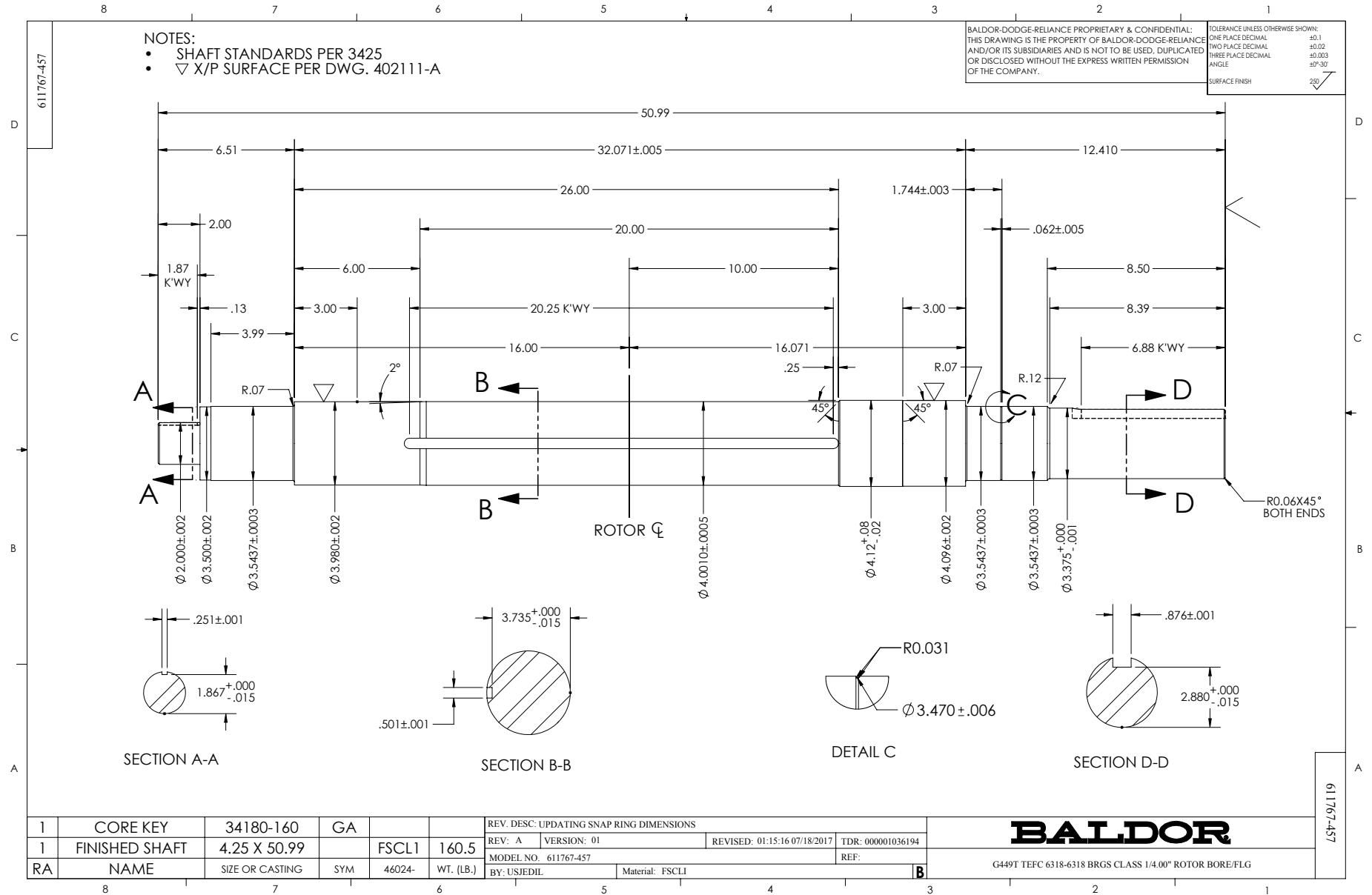
DRAWN BY: G. R. WEBB
CHECKED BY: C. E. JAMISON
APPROVED BY: W. L. SMITH
DATE: 07/17/15

AC MOTOR
PERFORMANCE
DATA

A44WG5175-R002

ISSUE DATE 04/08/26





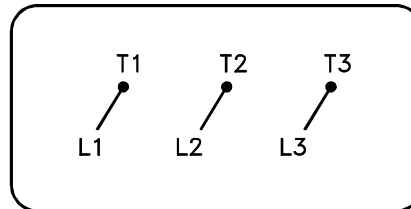
1	CORE KEY	34180-160	GA			REV. DESC: UPDATING SNAP RING DIMENSIONS
1	FINISHED SHAFT	4.25 X 50.99	FSCL1	160.5		REV: A VERSION: 01 REVISED: 01:15:16 07/18/2017 TDR: 000001036194
RA	NAME	SIZE OR CASTING	SYM	46024-	WT. (LB.)	MODEL NO. 611767-457 REF: BY: USJEDIL Material: FSCL1

BALDOR

G449T TEFC 6318-6318 BRGS CLASS 1/4.00" ROTOR BORE/FLG

416820-036

**A-C MOTOR
CONNECTION DIAGRAM
STANDARD 3 LEAD CONNECTED**



(N.P. 1575-BA)

REV. DESC: LOADED TO BUS, C/R 335225		
REV. LTR: -	VERSION: 00	TDR: 000000538207
FILE: \MGA\00000\682	REVISED: 11: 54: 06 04/30/2010	
MTL: -	BY: RAGRA	

BALDOR

CONN DIAG - STANDARD 3 LEAD
SH 1 of 1

416820-036