

DUTY MASTER ALTERNATING CURRENT MOTORS

ENCLOSURE: TOTALLY ENCLOSED

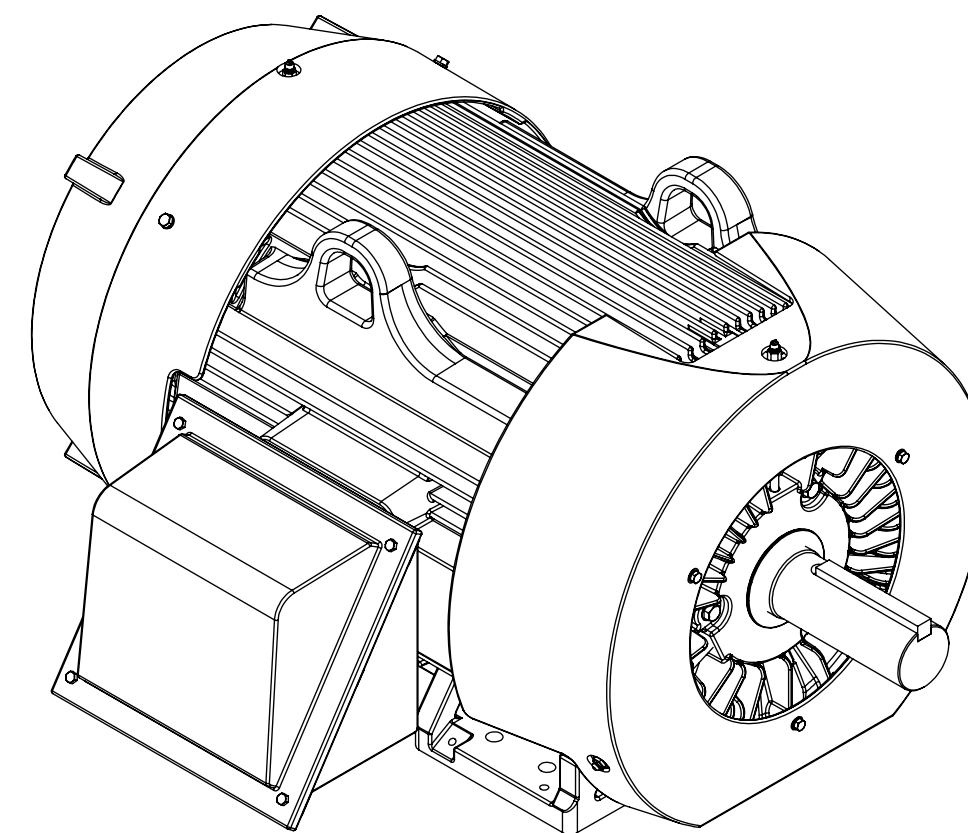
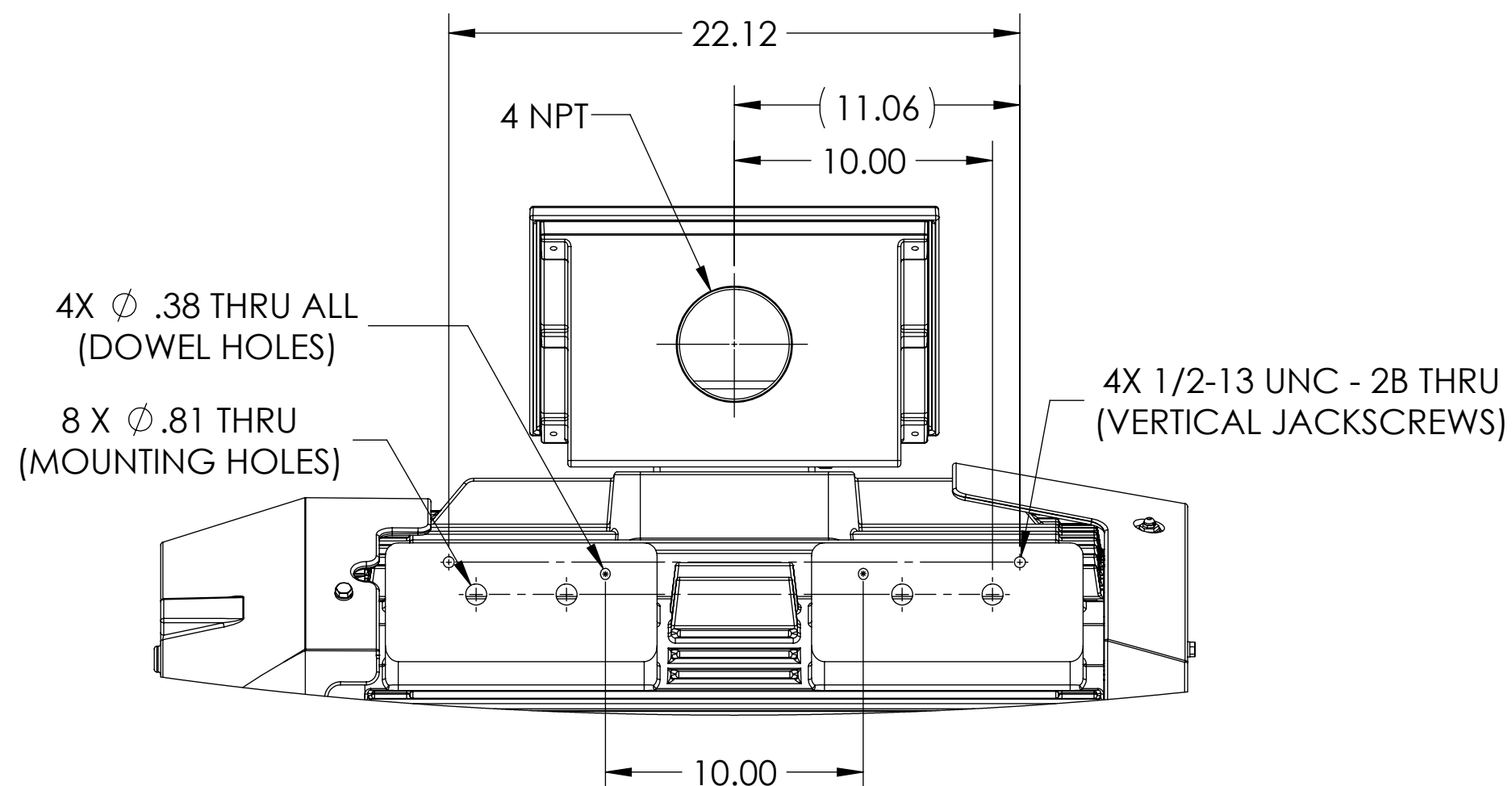
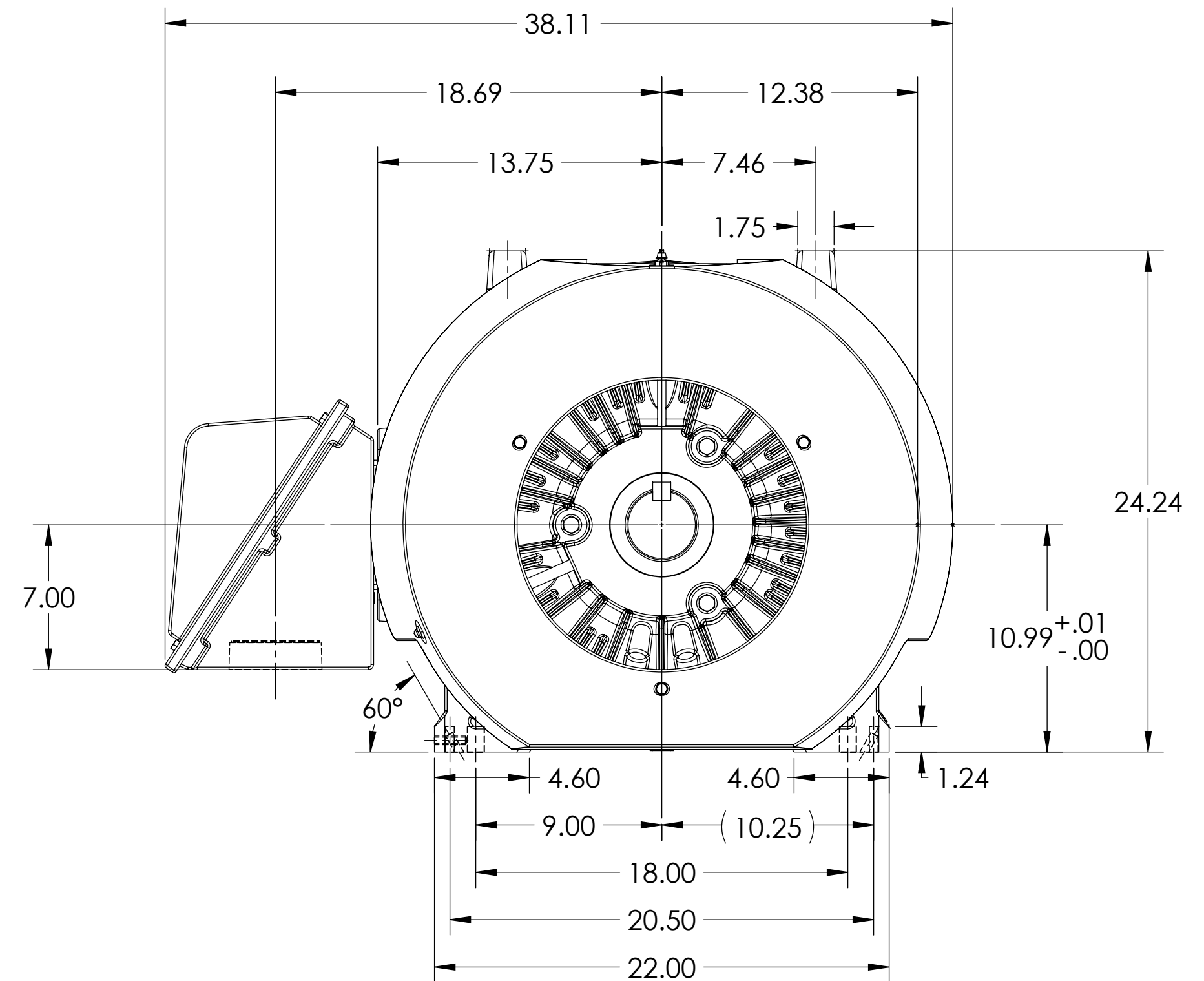
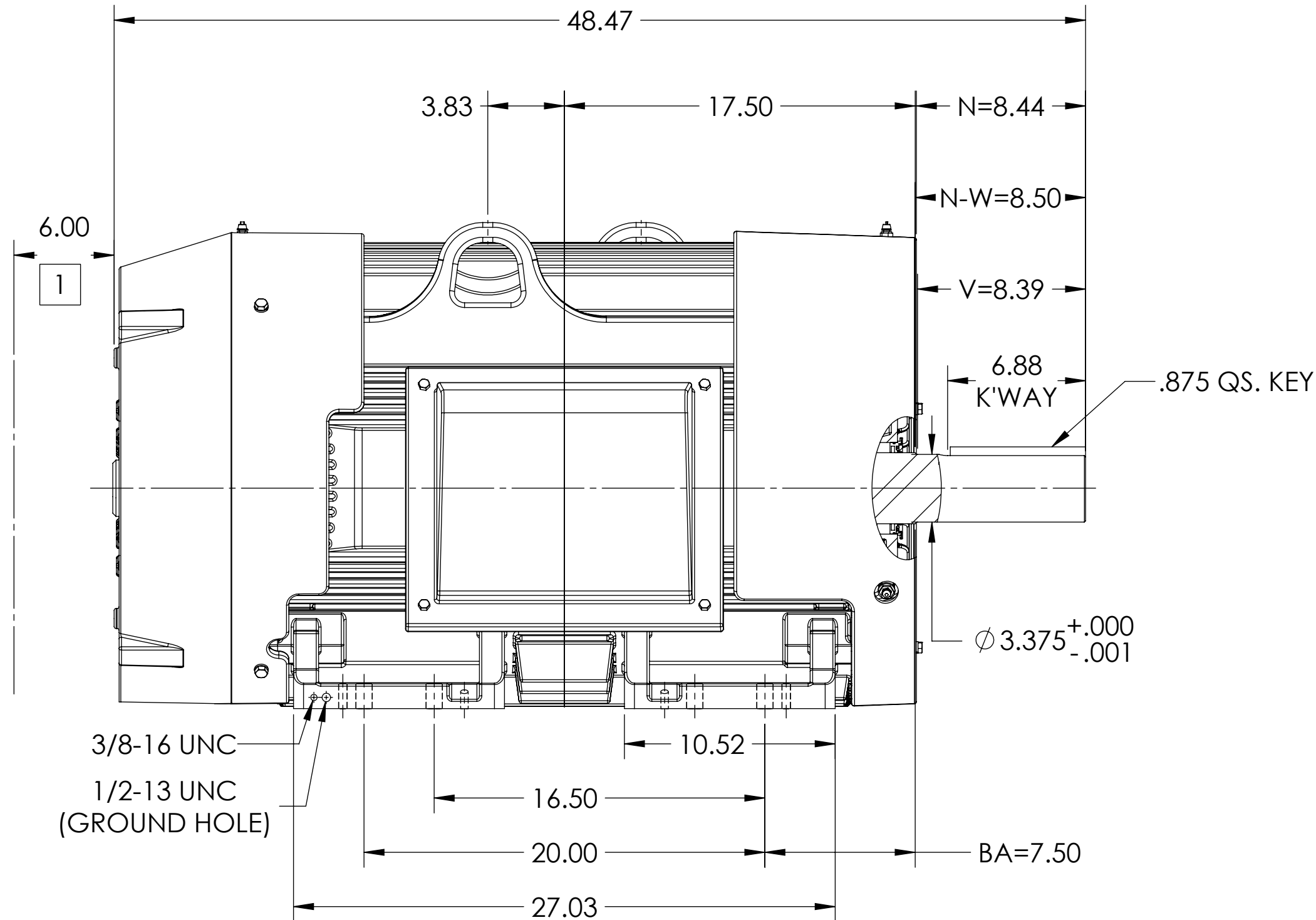
SQUIRREL-CAGE INDUCTION

COOLING: FAN COOLED

MOUNTING: FOOT, F-1 SIDE

G447T/ G445T FRAME MOUNTING HOLES

ENCLOSURE ENHANCEMENT: 841-XL



- 1 OBSTRUCTION MUST NOT ENCROACH ON AIR INLET.
- 2 DRIVE END AIR DEFLECTOR IS ONLY INCLUDED WHEN NECESSARY.

IF MOUNTING CLEARANCE DETAILS ARE REQUIRED, CONSULT FACTORY.
MAX PERMISSIBLE SHAFT RUNOUT FOR BALL IS .0015 & ROLLER BEARING IS .002 T.I.R.

DIMENSIONS ARE IN INCHES.
WEIGHT (LBS): 2515, MOTOR WEIGHTS MAY VARY BY 15% DEPENDING ON RATING.
CUSTOMER IS RESPONSIBLE FOR DETERMINING THAT MOTOR PERFORMANCE IS SUITABLE IN THE APPLICATION.

REV. DESC: UPDATE MODEL TO ADD EXTERNAL HARDWARE PER PROD MGM			
REV: B	VERSION: 02	REVISED: 08:09:50 10/26/2022	TDR: 000001196512
MODEL NO. 617434-662			REF:
BY: ENFRAJ0		Material:	

BALDOR

G447/445T TEFC FOOT F1 CI BOX/AIR DEF/841-XL

ENCLOSURE: TOTALLY ENCLOSED

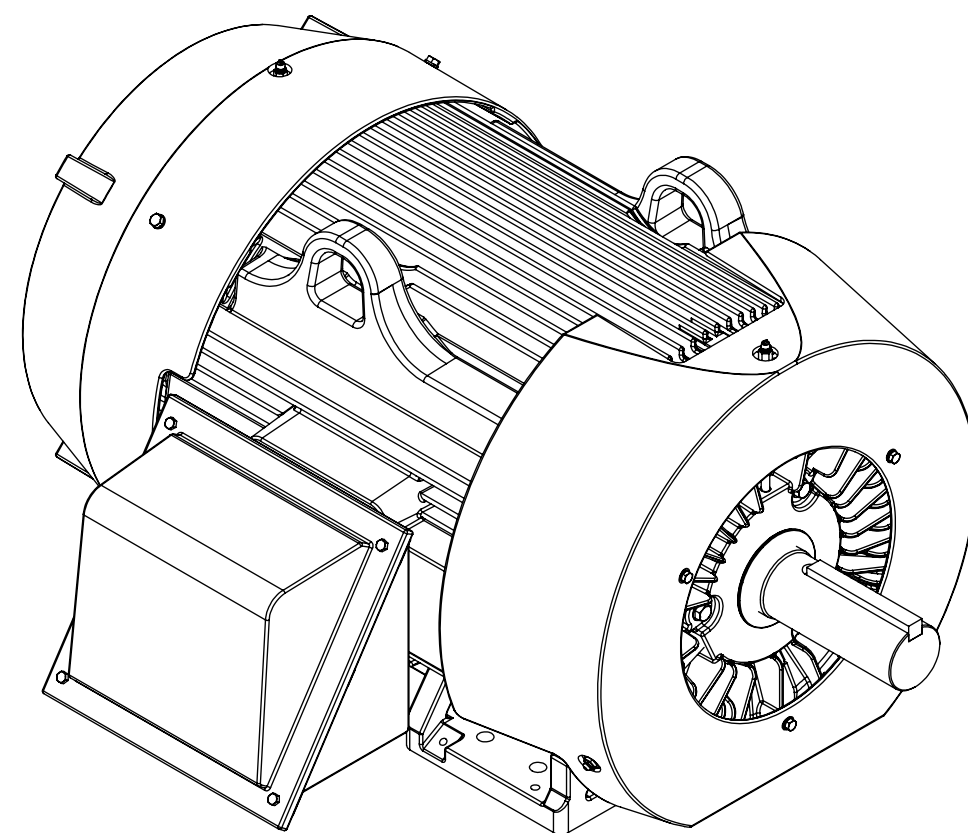
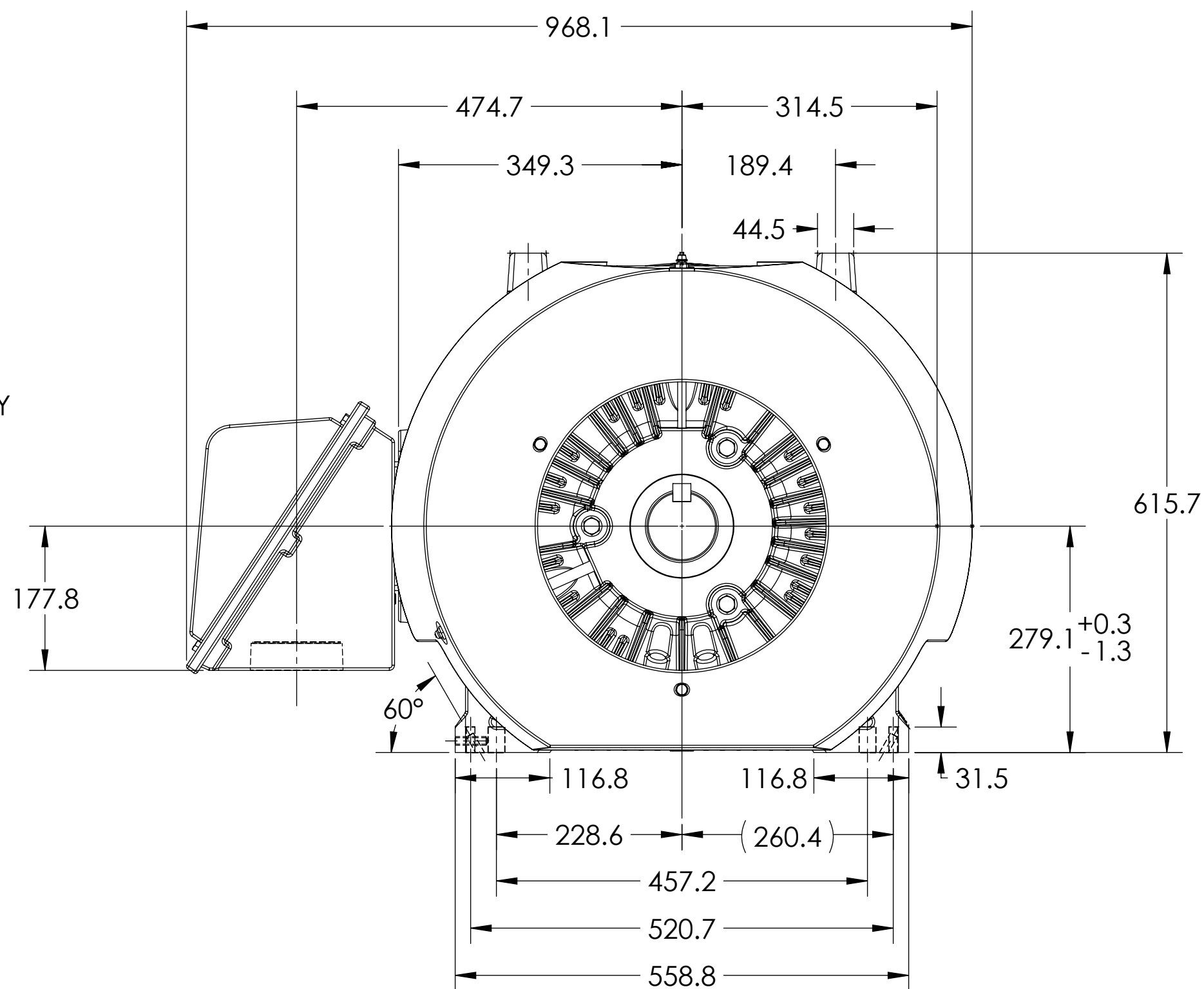
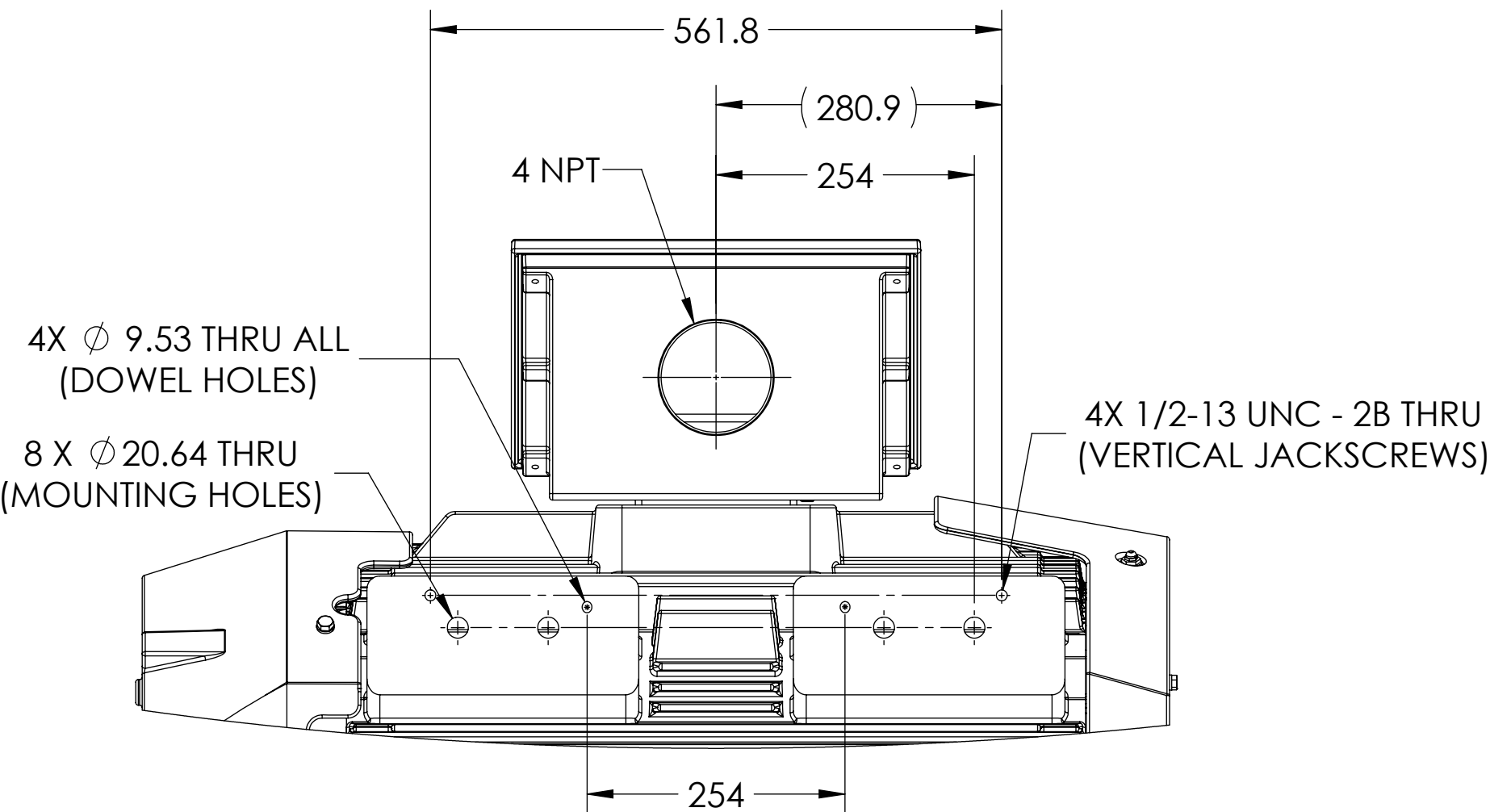
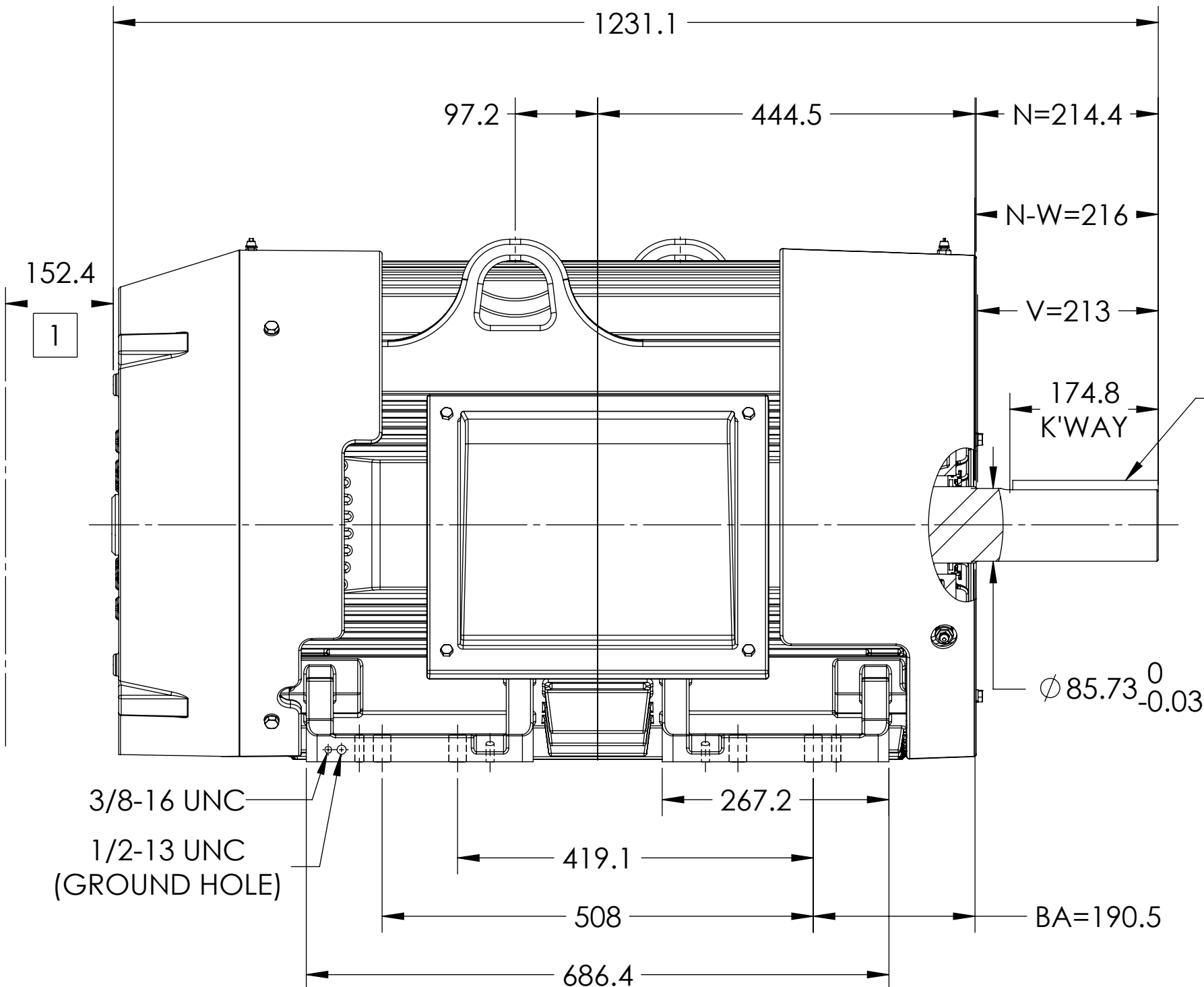
SQUIRREL-CAGE INDUCTION

COOLING: FAN COOLED

MOUNTING: FOOT, F-1 SIDE

G447T/ G445T FRAME MOUNTING HOLES

ENCLOSURE ENHANCEMENT: 841-XL



- 1 OBSTRUCTION MUST NOT ENCROACH ON AIR INLET.
- 2 DRIVE END AIR DEFLECTOR IS ONLY INCLUDED WHEN NECESSARY.

IF MOUNTING CLEARANCE DETAILS ARE REQUIRED, CONSULT FACTORY.
MAX PERMISSIBLE SHAFT RUNOUT FOR BALL IS .0015 & ROLLER BEARING IS .002 T.I.R.

DIMENSIONS ARE IN MILLIMETERS.
WEIGHT (KGS): 1141, MOTOR WEIGHTS MAY VARY BY 15% DEPENDING ON RATING.
CUSTOMER IS RESPONSIBLE FOR DETERMINING THAT MOTOR PERFORMANCE IS SUITABLE IN THE APPLICATION.

REV. DESC: UPDATE MODEL TO ADD EXTERNAL HARDWARE PER PROD MGM			
REV: B	VERSION: 02	REVISED: 08:09:50 10/26/2022	TDR: 000001196512
MODEL NO. 617434-662		REF:	
BY: ENFRAJ0		Material:	C

BALDOR

G447/445T TEFC FOOT F1 CI BOX/AIR DEF/841-XL