

DUTY MASTER ALTERNATING CURRENT MOTORS

SQUIRREL-CAGE INDUCTION

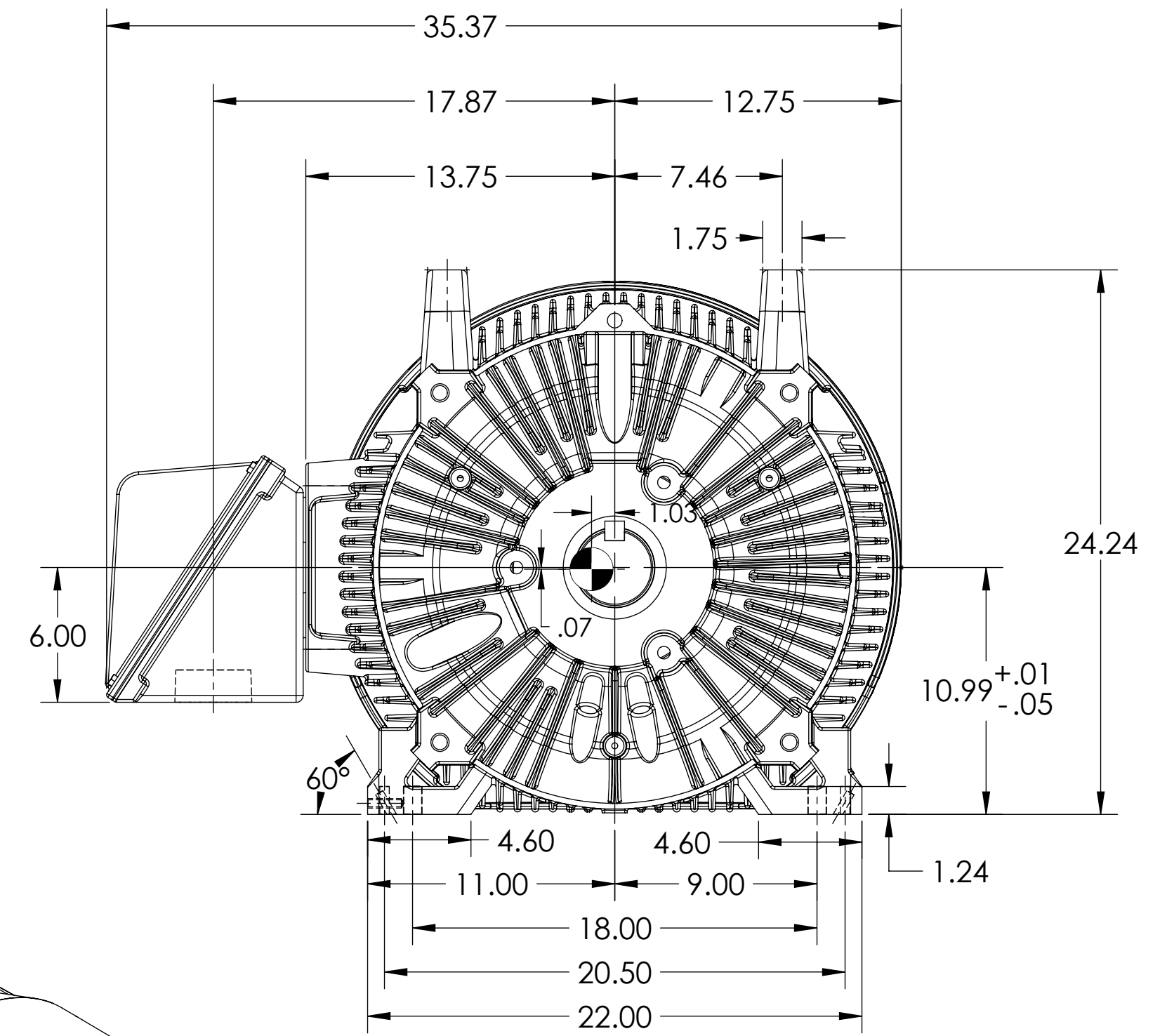
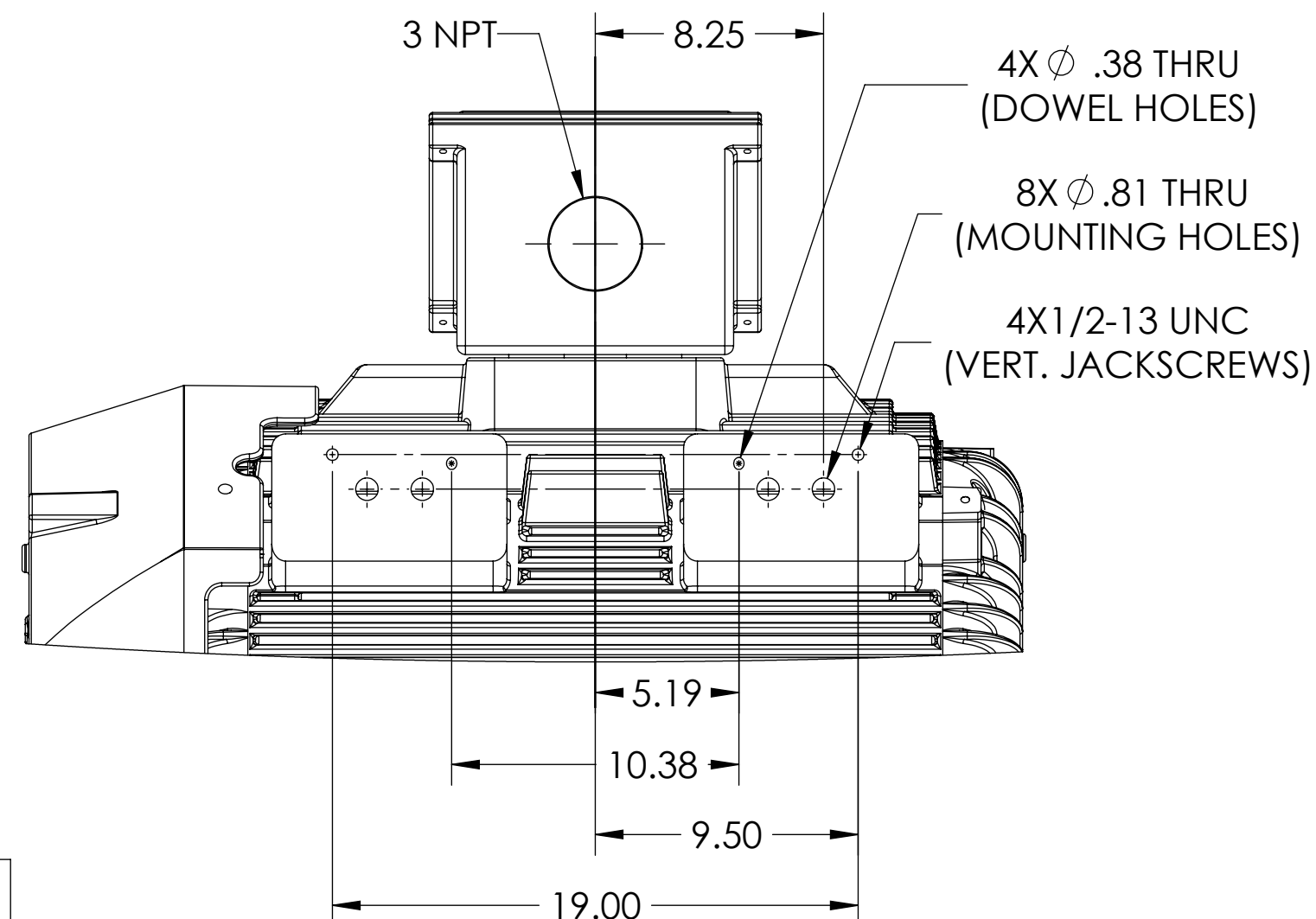
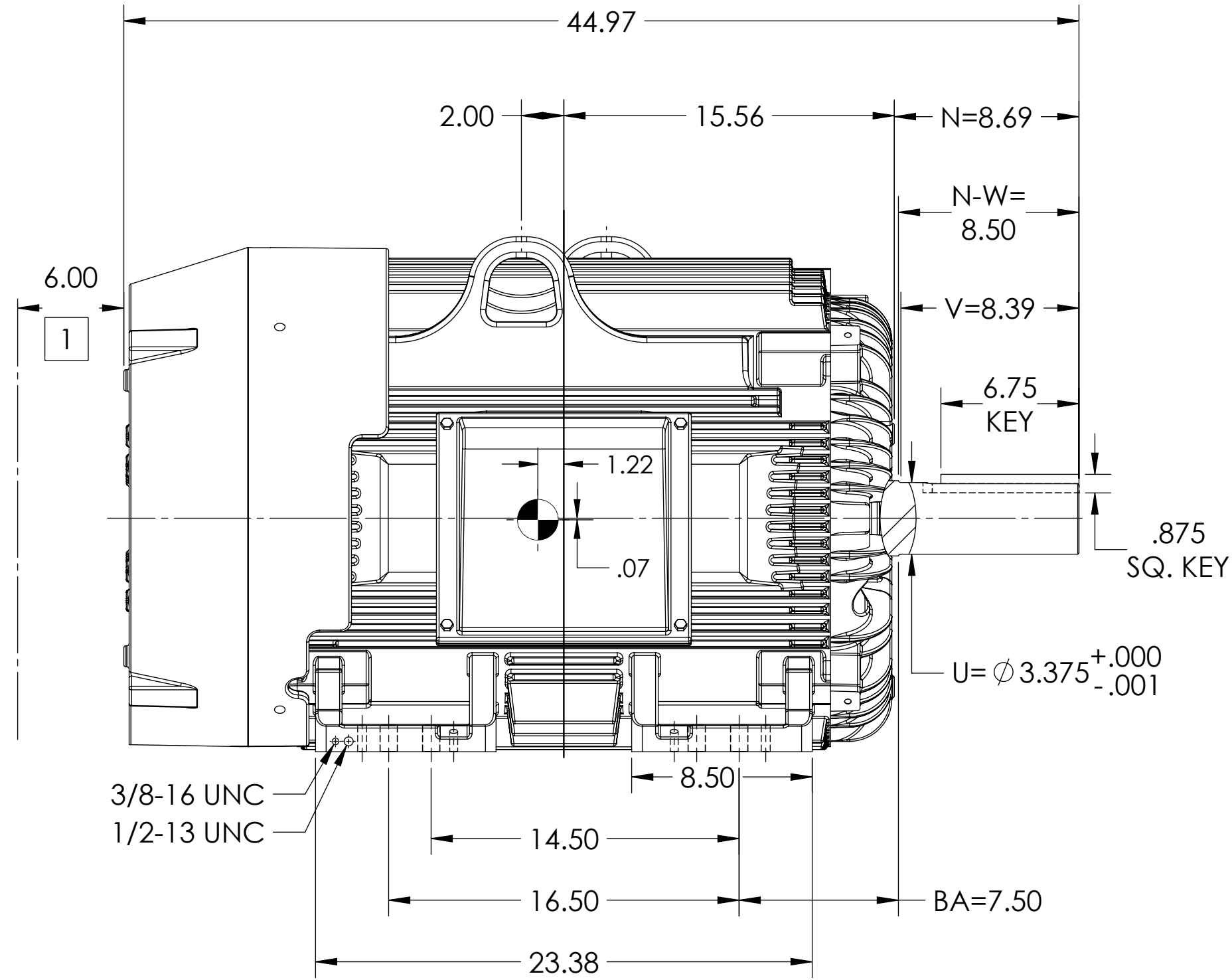
ENCLOSURE: TOTALLY ENCLOSED

COOLING: FAN COOLED

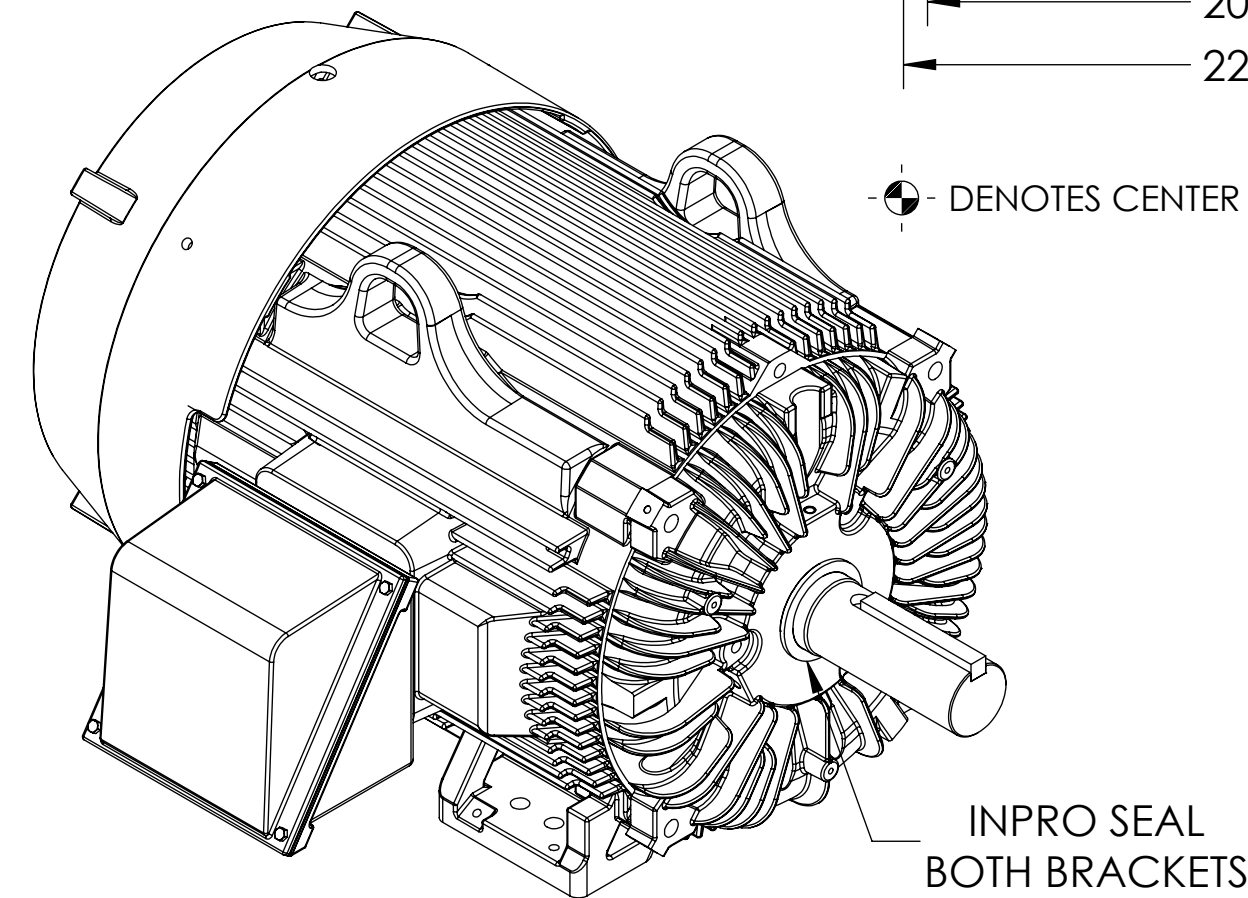
MOUNTING: FOOT, F-1 SIDE

G445T/G444T FRAME MOUNTING HOLES CENTER OF GRAVITY

841-XL ENHANCEMENT



-  - DENOTES CENTER OF GRAVITY WHICH VARIES BY ± 1.00 INCH



1 OBSTRUCTION MUST NOT ENCROACH ON AIR INLET.

DIMENSIONS ARE IN INCHES.
MOTOR WEIGHTS (LBS) = 2130 ±15% DEPENDING ON RATING.
IF MOUNTING CLEARANCE DETAILS ARE REQUIRED, CONSULT FACTORY.
MAX PERMISSIBLE SHAFT RUNOUT WHEN MEASURED AT END OF STANDARD SHAFT EXTENSION IS .0015 T.I.R.(BALL)
OR .002 T.I.R.(ROLLER)
CUSTOMER IS RESPONSIBLE FOR DETERMINING THAT MOTOR PERFORMANCE IS SUITABLE IN THE APPLICATION.

REV. DESC: ADD CENTER GRAVITY			
REV: C	VERSION: 03	REVISED: 08:56:38 03/10/2020	TDR: 000001134943
MODEL NO. 617434-660			REF:
BY: RAGGDM		Material:	C

BALDOR

G445/444T TEFC F1 FTD/CI BX/JACKSCREWS/DOWEL PINS/INPROS/CG

DUTY MASTER ALTERNATING CURRENT MOTORS
SQUIRREL-CAGE INDUCTION

617434-660

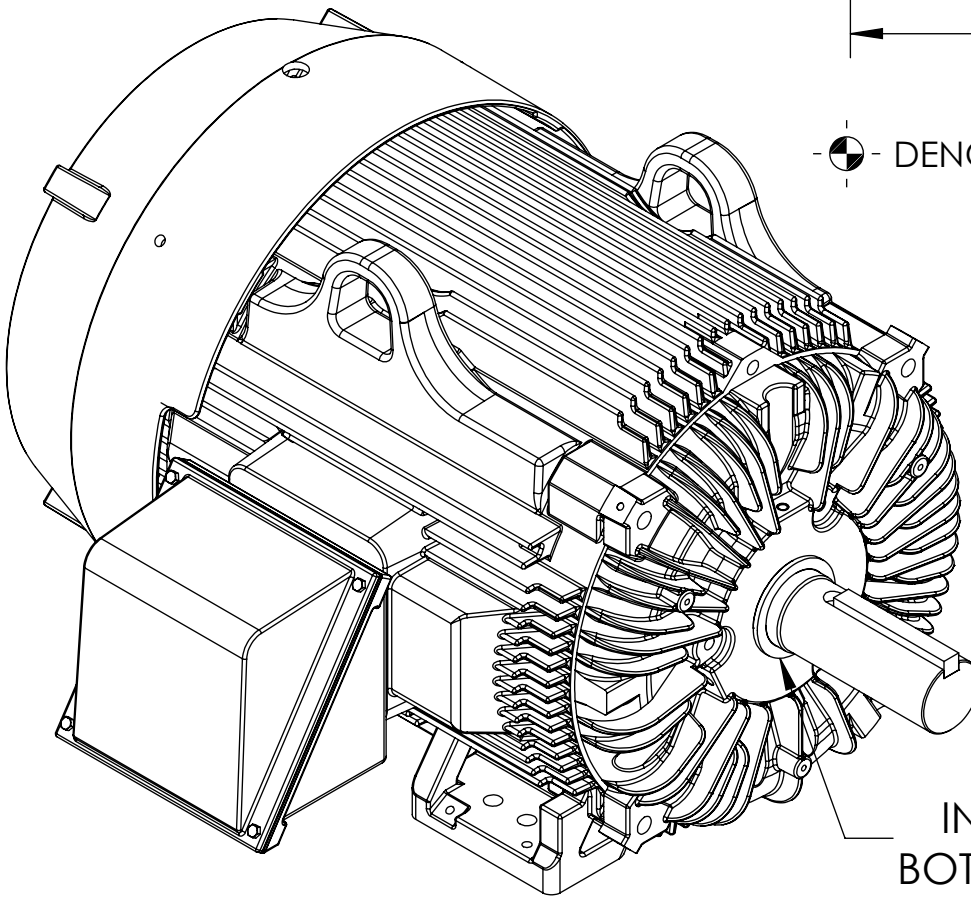
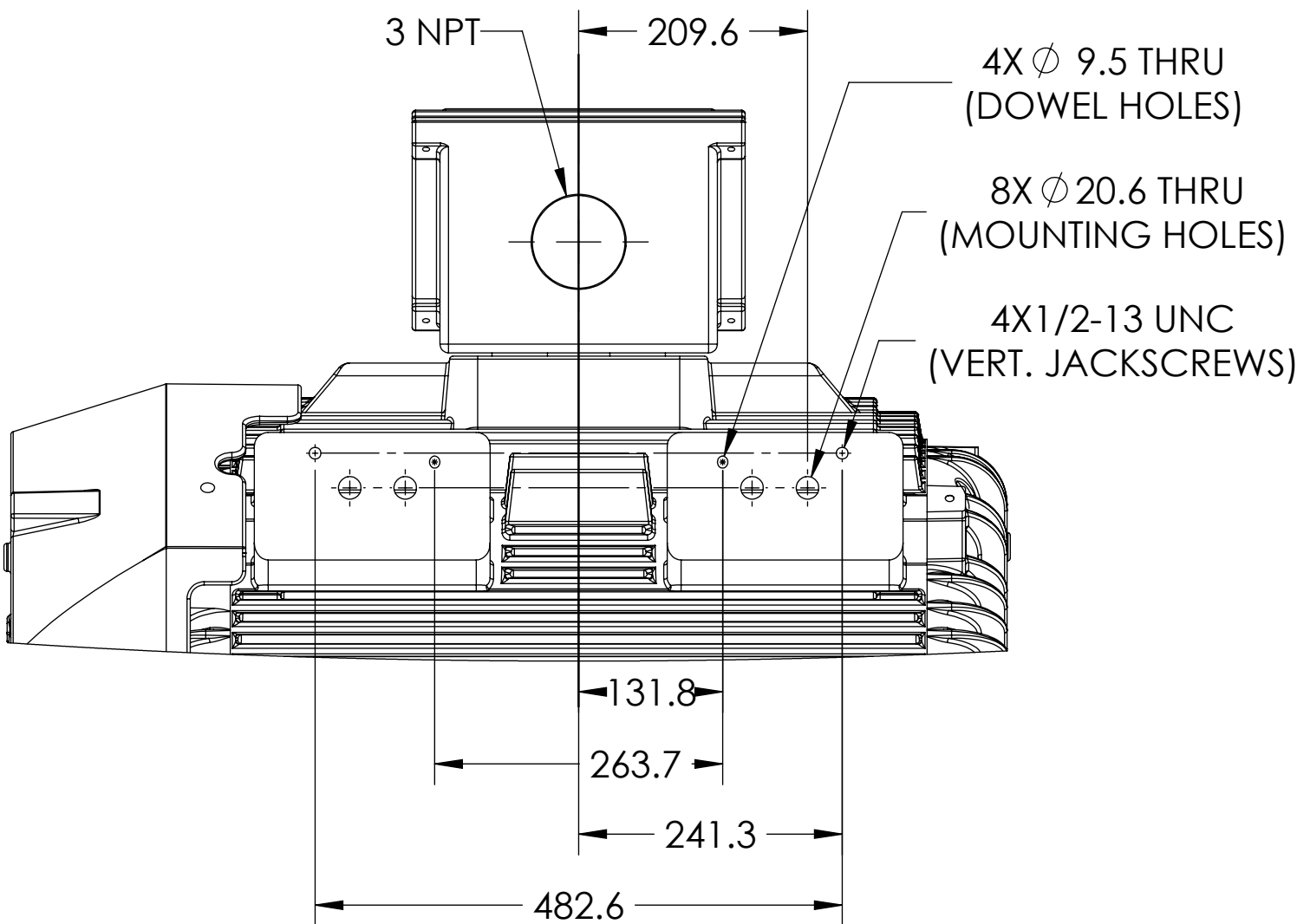
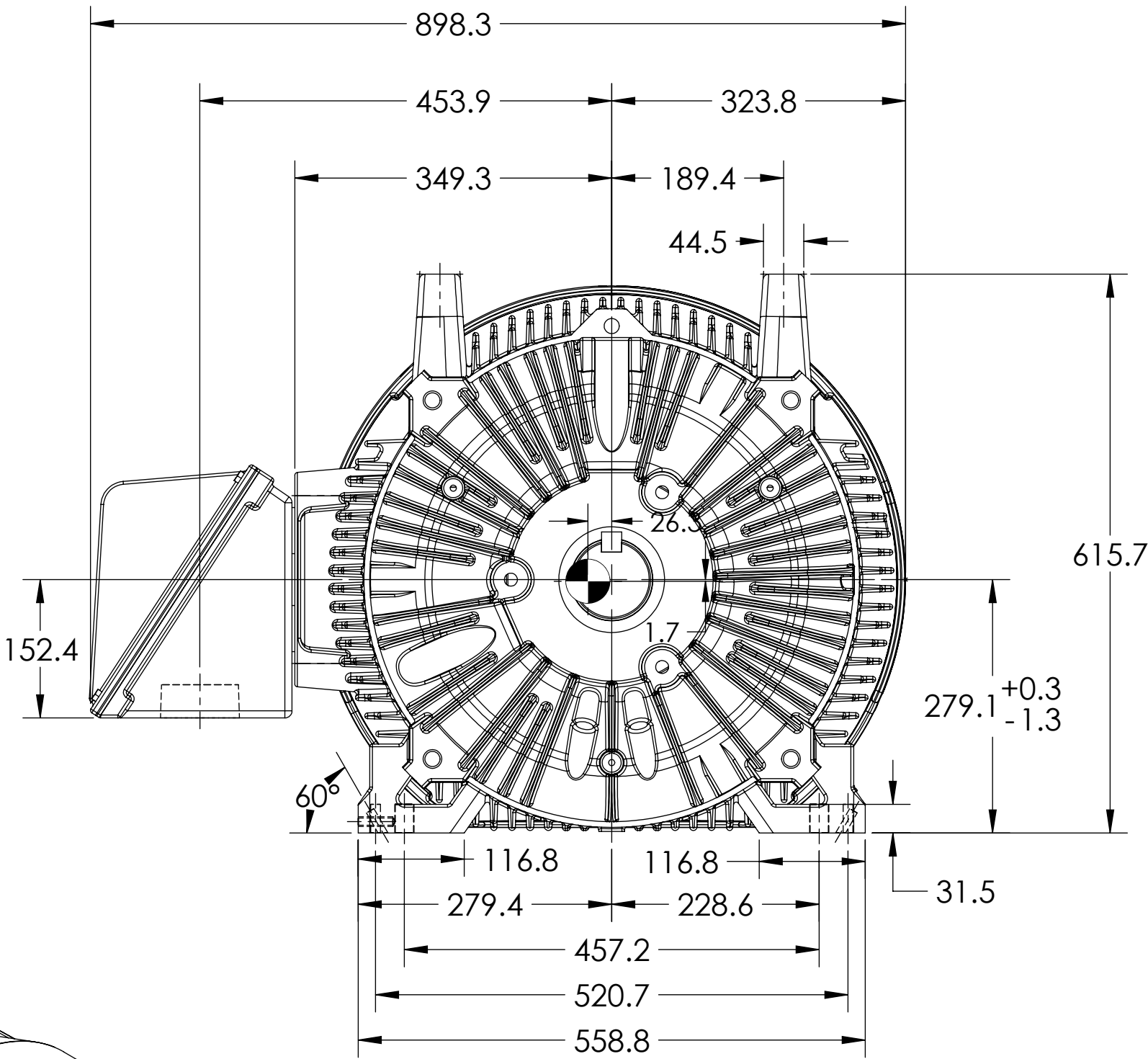
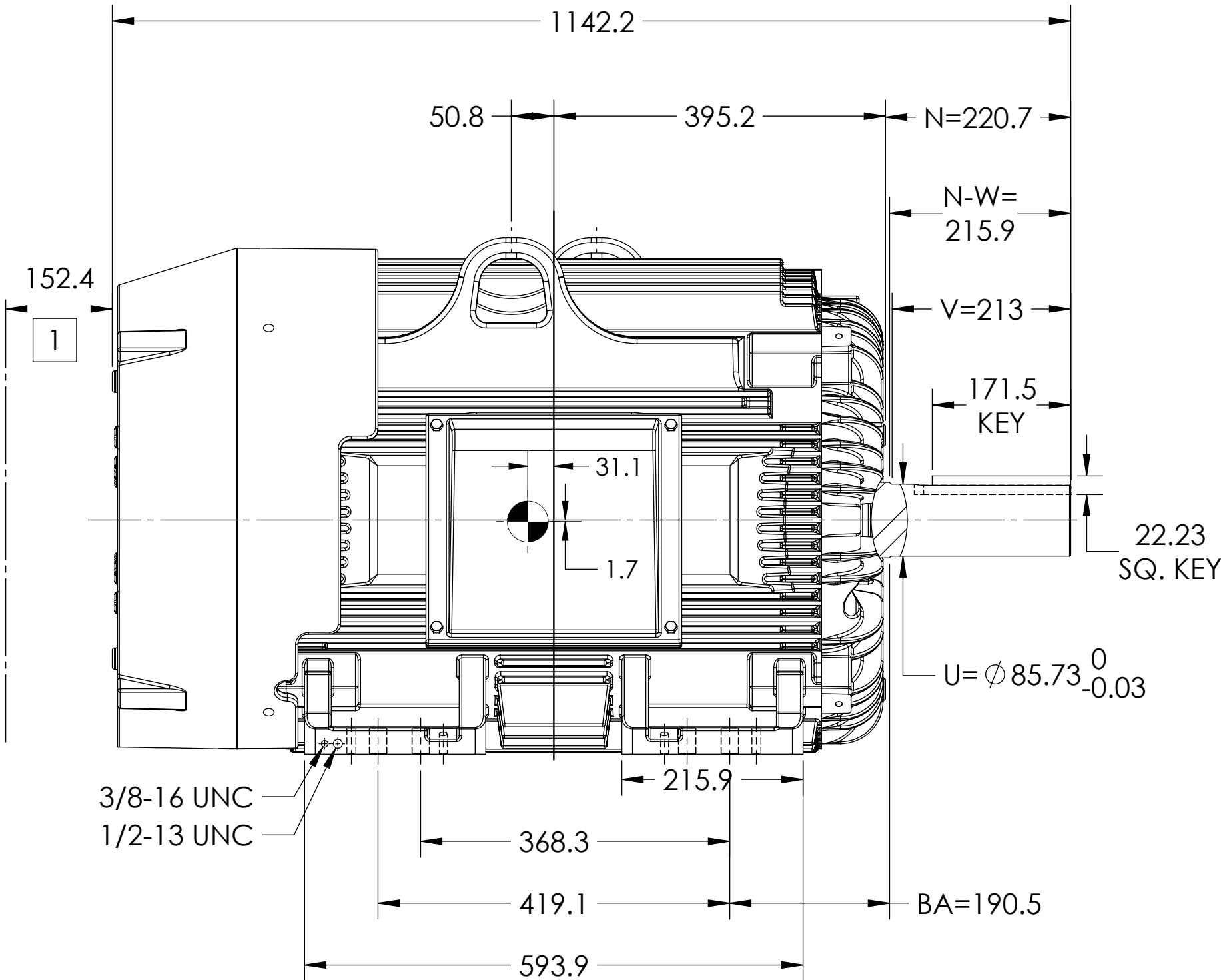
ENCLOSURE: TOTALLY ENCLOSED

COOLING: FAN COOLED

MOUNTING: FOOT, F-1 SIDE

G445T/G444T FRAME MOUNTING HOLES
CENTER OF GRAVITY

841-XL ENHANCEMENT



INPRO SEAL
BOTH BRACKETS

⊙ DENOTES CENTER OF GRAVITY WHICH VARIES BY ±1.00 INCH

1 OBSTRUCTION MUST NOT ENCROACH ON AIR INLET.

DIMENSIONS ARE IN MILLIMETERS.
MOTOR WEIGHTS (KGS) = 970 ±15% DEPENDING ON RATING.
IF MOUNTING CLEARANCE DETAILS ARE REQUIRED, CONSULT FACTORY.
MAX PERMISSIBLE SHAFT RUNOUT WHEN MEASURED AT END OF STANDARD SHAFT EXTENSION IS .04 T.I.R.(BALL)
OR .05 T.I.R.(ROLLER)
CUSTOMER IS RESPONSIBLE FOR DETERMINING THAT MOTOR PERFORMANCE IS SUITABLE IN THE APPLICATION.

REV. DESC: ADD CENTER GRAVITY			
REV: C	VERSION: 03	REVISED: 08:56:38 03/10/2020	TDR: 000001134943
MODEL NO. 617434-660		REF:	
BY: RAGGDM		Material:	

BALDOR

G445/444T TEFC F1 FTD/CI BX/JACKSCREWS/DOWEL PINS/INPROS/CG

SHEET NUMBER
2 OF 2

617434-660

617434-660