



Customer information packet

ECP84402T-4

100HP, 3565RPM, 3PH, 60HZ, 405TS, A40066M, TEF

Class - CLI GP A,B,C,D

Division - Division II

Specifications

Enclosure	TEFC
Frame	405TS
Frame Material	Iron
Frequency	60.00 Hz
Haz Area Class and Group	CLI GP A,B,C,D
Haz Area Division	Division II
Motor Letter Type	Three Phase
Output @ Frequency	100.000 HP @ 60 HZ
Phase	3
Synchronous Speed @ Frequency	3600 RPM @ 60 HZ
Voltage @ Frequency	460.0 V @ 60 HZ
Agency Approvals	C UR US CCSA US CCSAUSEEV CURUS
Ambient Temperature	40 °C
Auxiliary Box	NO AUXILLARY BOX
Base Indicator	Rigid
Bearing Grease Type	Polyrex EM (-20F +300F)
Constant Torque Speed Range	10-60
Current @ Voltage	110.000 A @ 460.0 V
Design Code	B
Drip Cover	No Drip Cover
Duty Rating	CONT
Efficiency @ 100% Load	94.1 %
Feedback Device	NO FEEDBACK
Haz Area Temp Code	T3
Heater Indicator	No Heater
High Voltage Full Load Amps	110.0 a
Insulation Class	F
Inverter Code	Inverter Ready
KVA Code	G

Part detail

Revision	-
Type	AC
Mech. spec.	
Base	
Status	PRD/A
Elec. spec.	A40WG1242
Layout	617429-791
Eff. date	06-19-2025
CD Diagram	416820-036
Poles	02
Leads	3#2
Proprietary	False
Created date	05-14-2025

Lifting Lugs	Standard Lifting Lugs
Motor Lead Quantity/Wire Size	3 @ 2 AWG
Motor Standards	None
Motor Type	A40066M
Mounting Arrangement	F1
No Load Current	26.3 a
Number of Poles	2
Overall Length	35.19 IN
Power Factor	90
Pulley End Bearing Type	Ball
Pulley Face Code	Standard
Service Factor	1.15
Shaft Diameter	2.125 IN
Shaft Ground Indicator	No Shaft Grounding
Shaft Rotation	Reversible
Shaft Slinger Indicator	No Slinger
Speed	3565 rpm
Speed Code	Single Speed
Starting Method	Direct on line
Thermal Device - Bearing	None
Thermal Device - Winding	None

Nameplate

NP4566

CAT NO	ECP84402T-4	SPEC NO.	A40-0005-1242						
HP	100	AMPS	110	VOLTS	460	DESIGN	B		
FRAME SIZE	405TS	RPM	3565	HZ	60	AMB	40	SF	1.15
D.E. BRG.DATA	6313	O.D.E. BRG.DATA	6313	PH	3	DUTY	CONT	INSUL.CLASS	F
D.E. BRG.	65BC03J30X	TYPE	ENCL	TEFC	CODE	G			
O.D.E. BRG.	65BC03J30X	POWER FACTOR	90	NEMA-NOM-EFFICIENCY	94.1				
3/4 LOAD EFF.	94.7	IP	56	MAX CORR KVAR	12	GUARANTEED EFFICIENCY	93		
TEMP CODE	T3	TEMP =	200						
CHP HZ	60-70	CT HZ	10-60	VT HZ	0-60				
INVERTER-TEMP-CODE	T3								
SER.NO.		MOTOR WEIGHT							

000613007EX

CAT NO	ECP84402T-4	SPEC NO.	A40-0005-1242
NO. ROTOR BARS	38	GREASE TYPE	POLYREX EM
NO. SLOTS	48	NL AMPS AT RATED VOLTAGE	26.3
5 YEAR WARRANTY		WINDING RES @25 C	.0511 OHMS
MFG. DATE		SER.NO	

S/O	FRAME	HP	TYPE	PHASE/ HERTZ	RPM	VOLTS
	405TSC	100	P	3/60	3565	460

AMPS	DUTY	AMB °C/ INSUL	S.F.	NEMA DESIGN	CODE LETTER	ENCLOSURE
110	CONT	40/F	1.15	B	G	TEFC

E/S	ROTOR	TEST S.O.	TEST DATE	STATOR RES. @25 °C OHMS (BETWEEN LINES)
---	418142005XE	---	---	.0511

PERFORMANCE

LOAD	HP	AMPERES	RPM	% POWER FACTOR	% EFFICIENCY
NO LOAD	0	26.3	3600	8.33	0
1/4	25.0	37.4	3591	69.0	90.8
2/4	50.0	58.1	3583	85.7	94.0
3/4	75.0	83.0	3574	89.3	94.7
4/4	99.9	110	3565	90.1	94.6
5/4	125	137	3555	90.6	94.2

SPEED TORQUE

	RPM	% TORQUE FULL LOAD	TORQUE LB.-FT.	AMPERES
LOCKED ROTOR	0	213	314	725
PULL UP	2385	181	267	650
BREAKDOWN	3396	272	401	416
FULL LOAD	3565	100	147	110

AMPERES SHOWN FOR 460 VOLT CONNECTION. IF OTHER CONNECTIONS ARE AVAILABLE, THE AMPERES WILL VARY INVERSELY WITH THE RATED VOLTAGE.

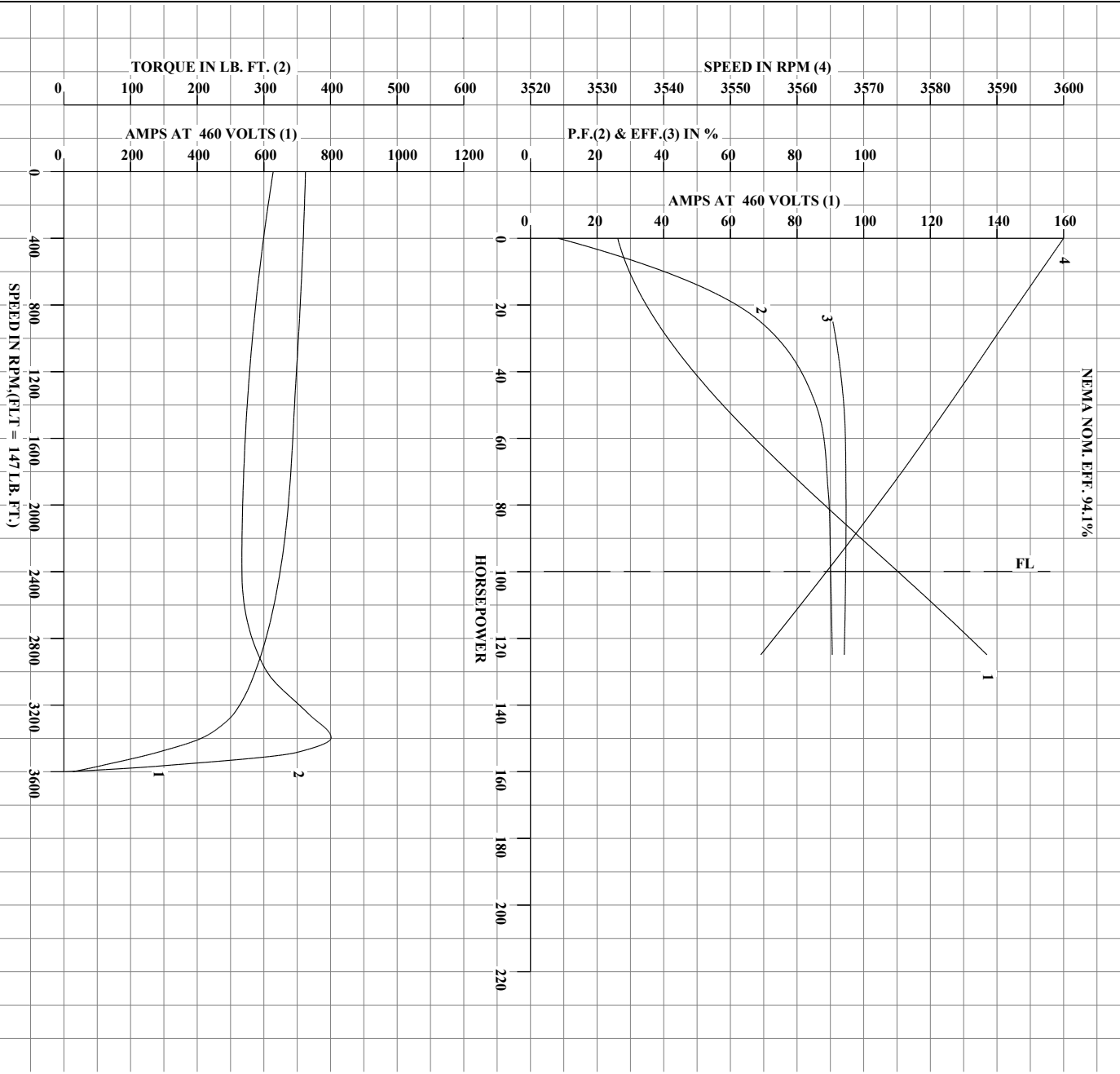
TYPICAL DATA
NEMA/NOM. EFF. 94.1%

	DRAWN BY: C.E. JAMISON	AC MOTOR PERFORMANCE DATA	A40WG1242-R007
	CHECKED BY: W.L. SMITH APPROVED BY: E.J. CHRISTIAN DATE: 07/24/18		

USCHATA

Printed on 02/25/2026 2:08 PM

REL.S.O.	405TSC	RPM	3565	S.F.	1.15	ROTOR	418142005XE
FRAME	100	VOLTS	460	NEMA DESIGN	B	TEST S.O.	TYPICAL DATA
HP	100	AMPS	110	CODE LETTER	G	TEST DATE	---
TYPE	P	DUTY CONT		ENCLOSURE	TEFC	STATOR RES. @ 25°C	.0511
PHASE/HERTZ	3/60	AMB °C/INSUL	40/F	E/S	---	OHMS (BETWEEN LINES)	



AMPERES SHOWN FOR 460 VOLT CONNECTION, IF OTHER VOLTAGE CONNECTIONS ARE AVAILABLE, THE AMPERES WILL VARY INVERSELY WITH THE RATED VOLTAGE.



DRAWN BY: C.E. JAMISON
 CHECKED BY: W.L. SMITH
 APPROVED BY: E.J. CHRISTIAN
 DATE: 07/24/18

AC MOTOR
 PERFORMANCE
 DATA

A40WG1242-R007

ISSUE DATE 02/25/26

USCHATA

Printed on 02/25/2026 2:08 PM

REL.S.O.	405TSC	RPM	3565	S.F.	1.15	ROTOR	418142005XE
FRAME	100	VOLTS	460	NEMA DESIGN	B	TEST S.O.	TYPICAL DATA
HP	P	AMPS	110	CODE LETTER	G	TEST DATE	---
TYPE	P	DUTY CONT		ENCLOSURE	TEFC	STATOR RES. @ 25°C	.0511
PHASE / HERTZ	3/60	AMB °C / INSUL	40/F	E/S	---	OHMS (BETWEEN LINES)	

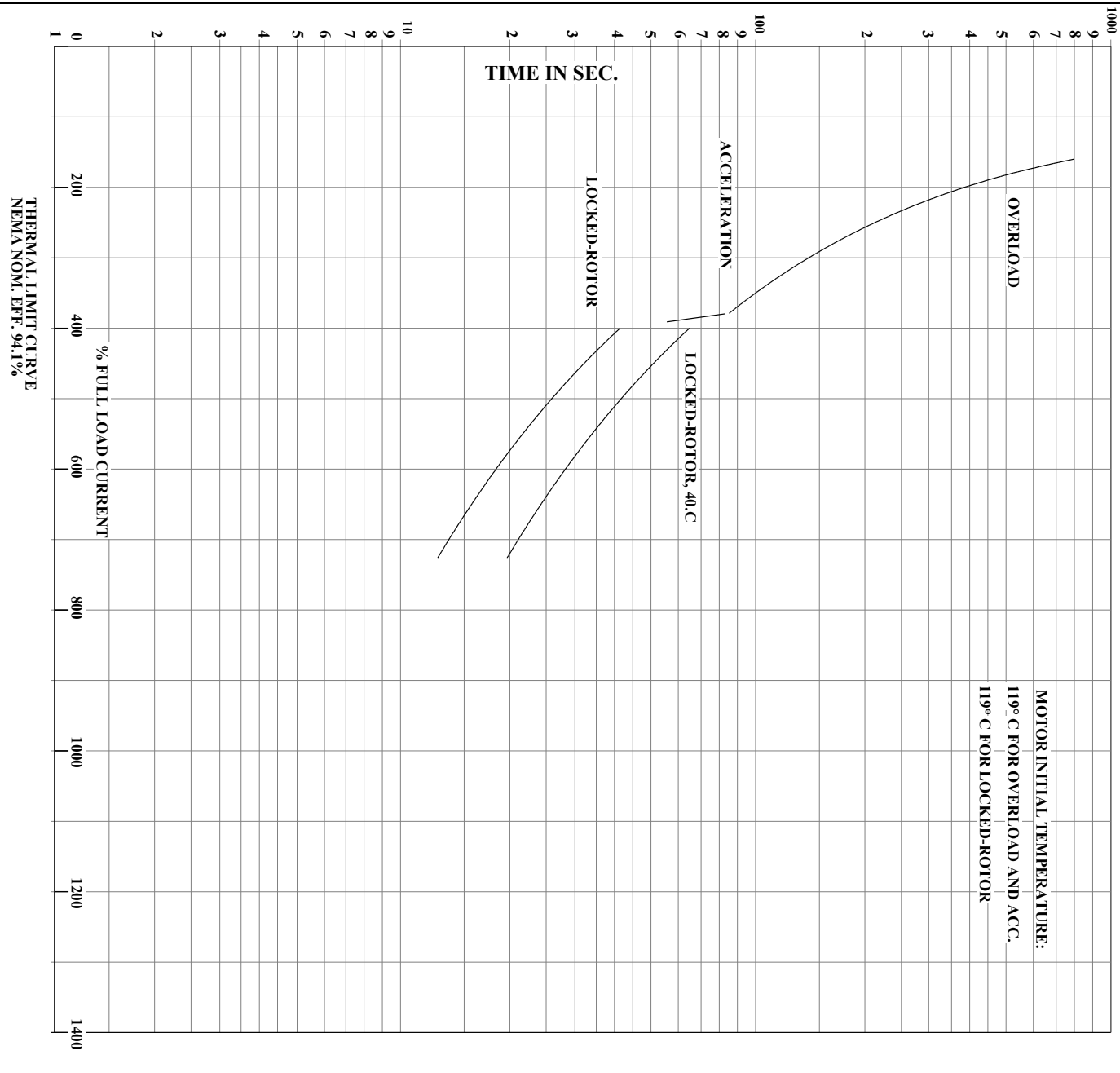
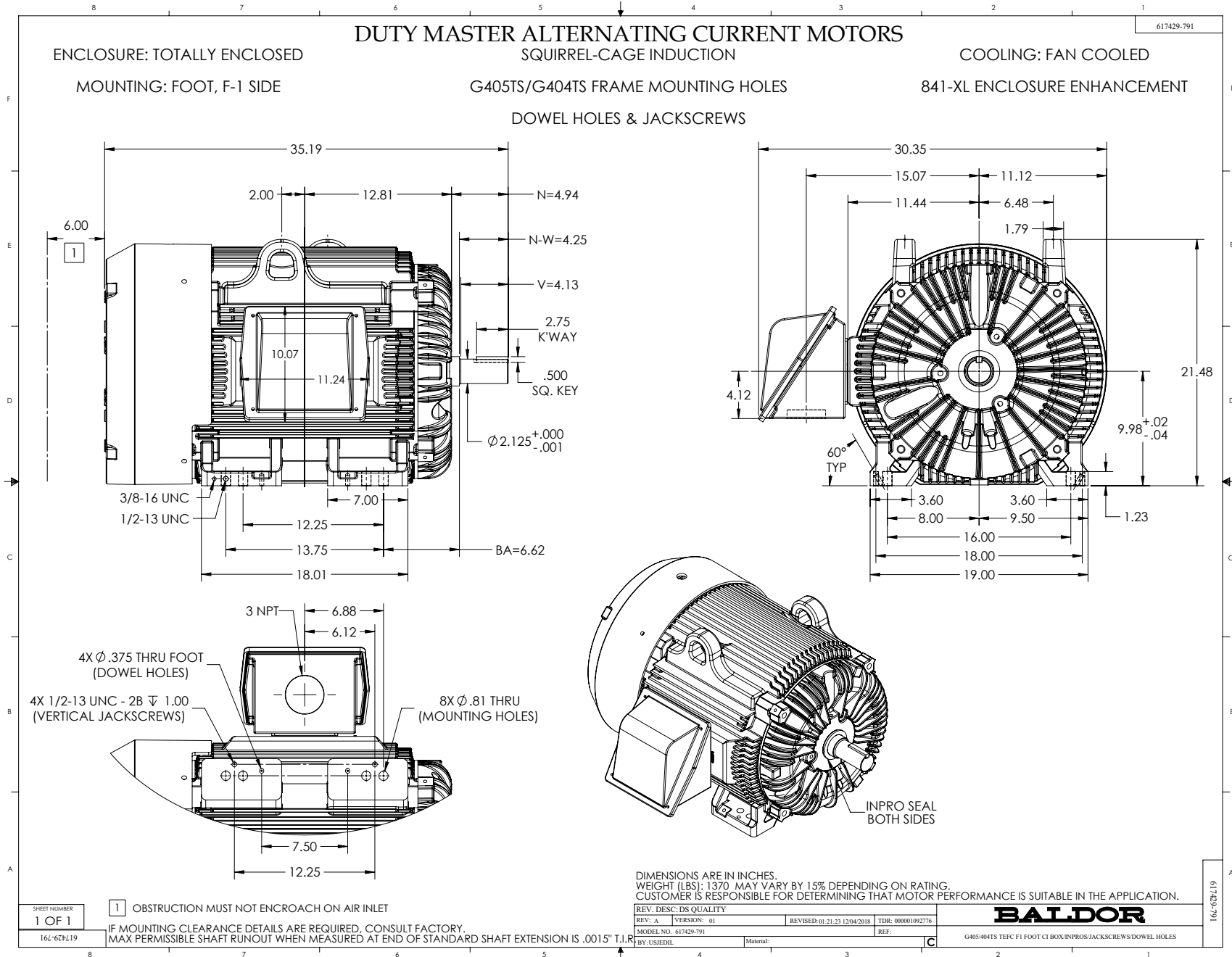


ABB	DRAWN BY: C.E. JAMISON	AC MOTOR PERFORMANCE DATA	A40WG1242-R007
	CHECKED BY: W.L. SMITH APPROVED BY: E.J. CHRISTIAN DATE: 07/24/18		
USCHATA		ISSUE DATE 02/25/26	

USCHATA

Printed on 02/25/2026 2:08 PM



416820-036

A-C MOTOR
CONNECTION DIAGRAM
STANDARD 3 LEAD CONNECTED



(N.P. 1575-BA)

416820-036

REV. DESC: LOADED TO BUS, C/R 335225		
REV. LTR: -	VERSION: 00	TDR: 000000538207
FILE: \MGA\00000\682	REVISED: 11: 54: 06 04/30/2010	
MTL: -	BY: RAGRA	

BALDOR

CONN DIAG - STANDARD 3 LEAD
SH 1 of 1