

DUTY MASTER ALTERNATING CURRENT MOTORS

SQUIRREL-CAGE INDUCTION

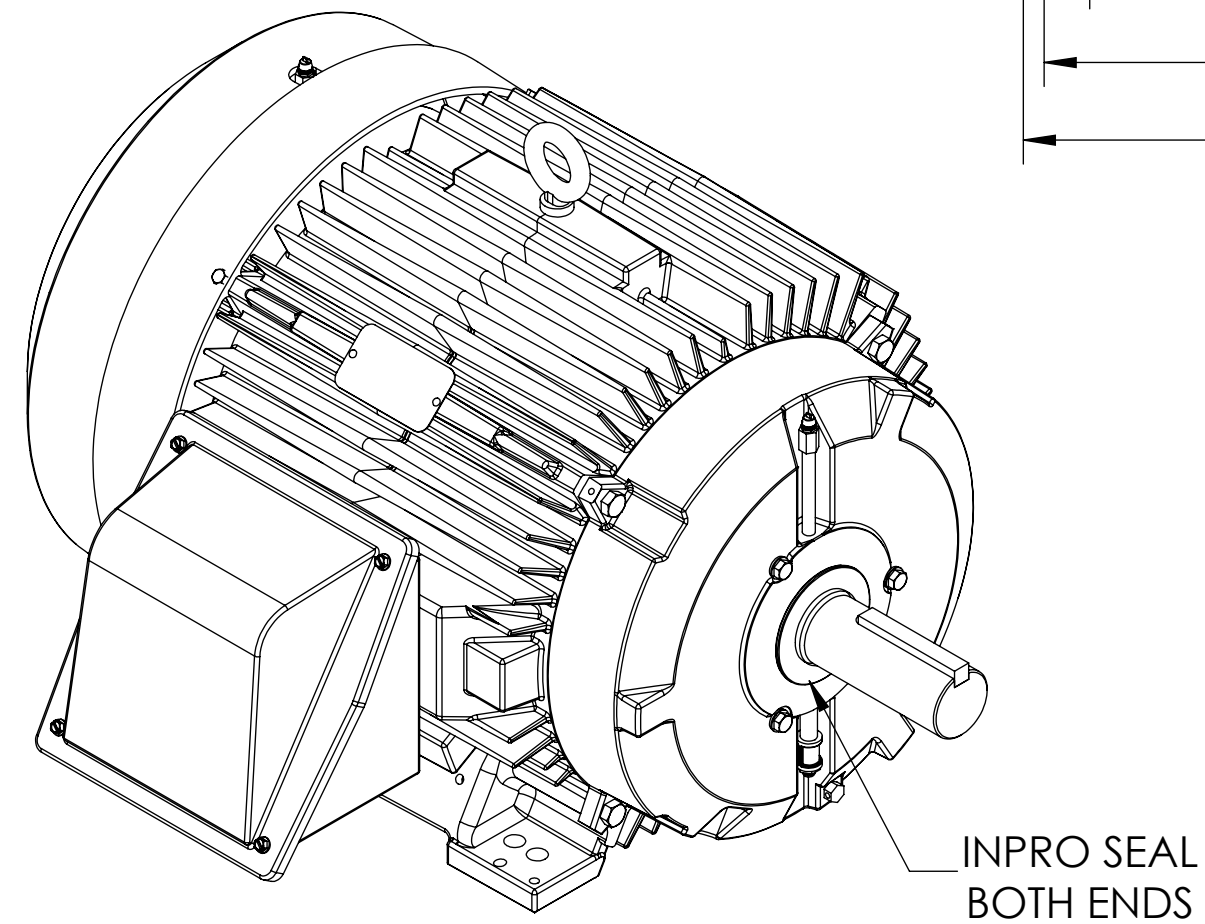
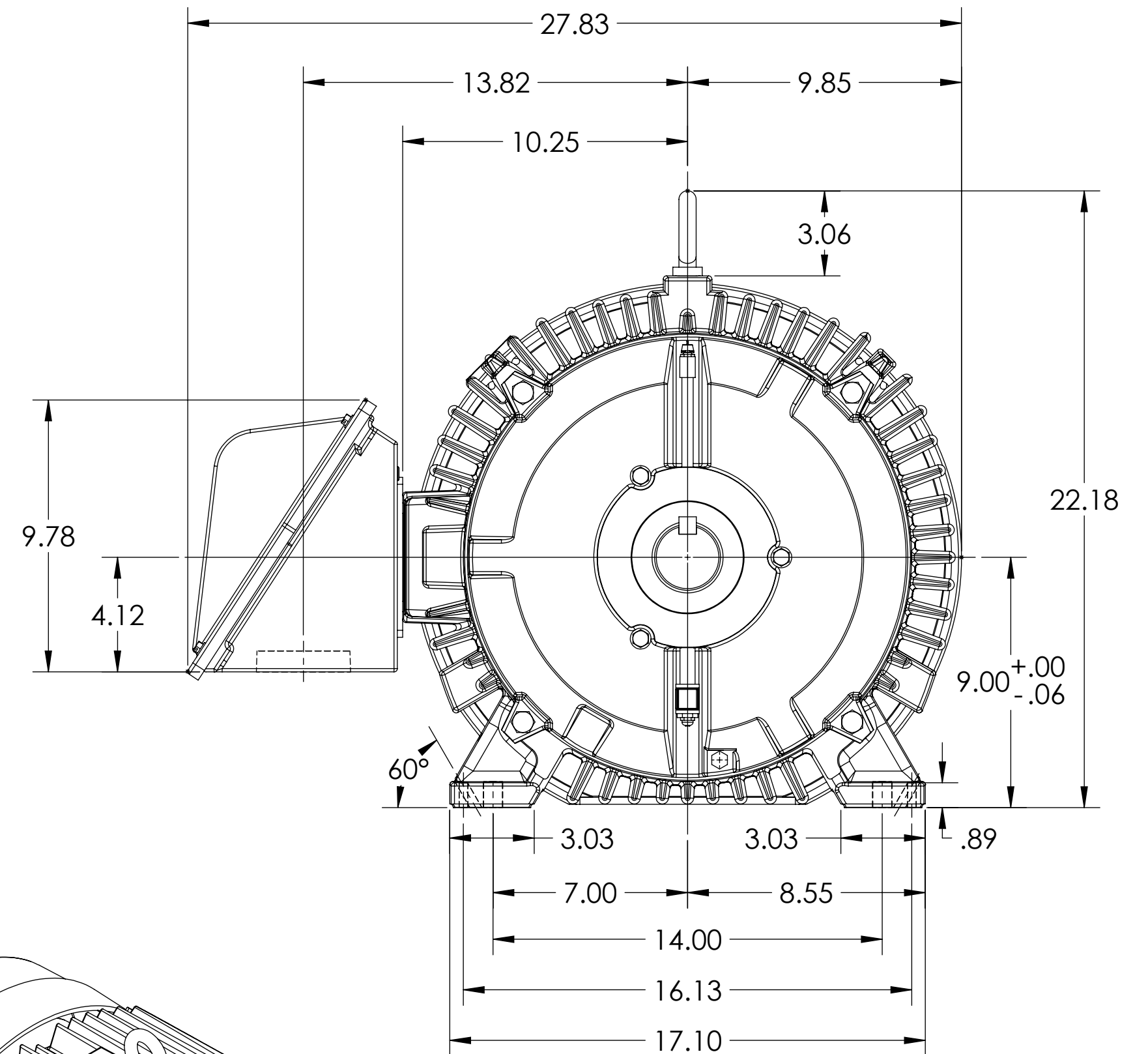
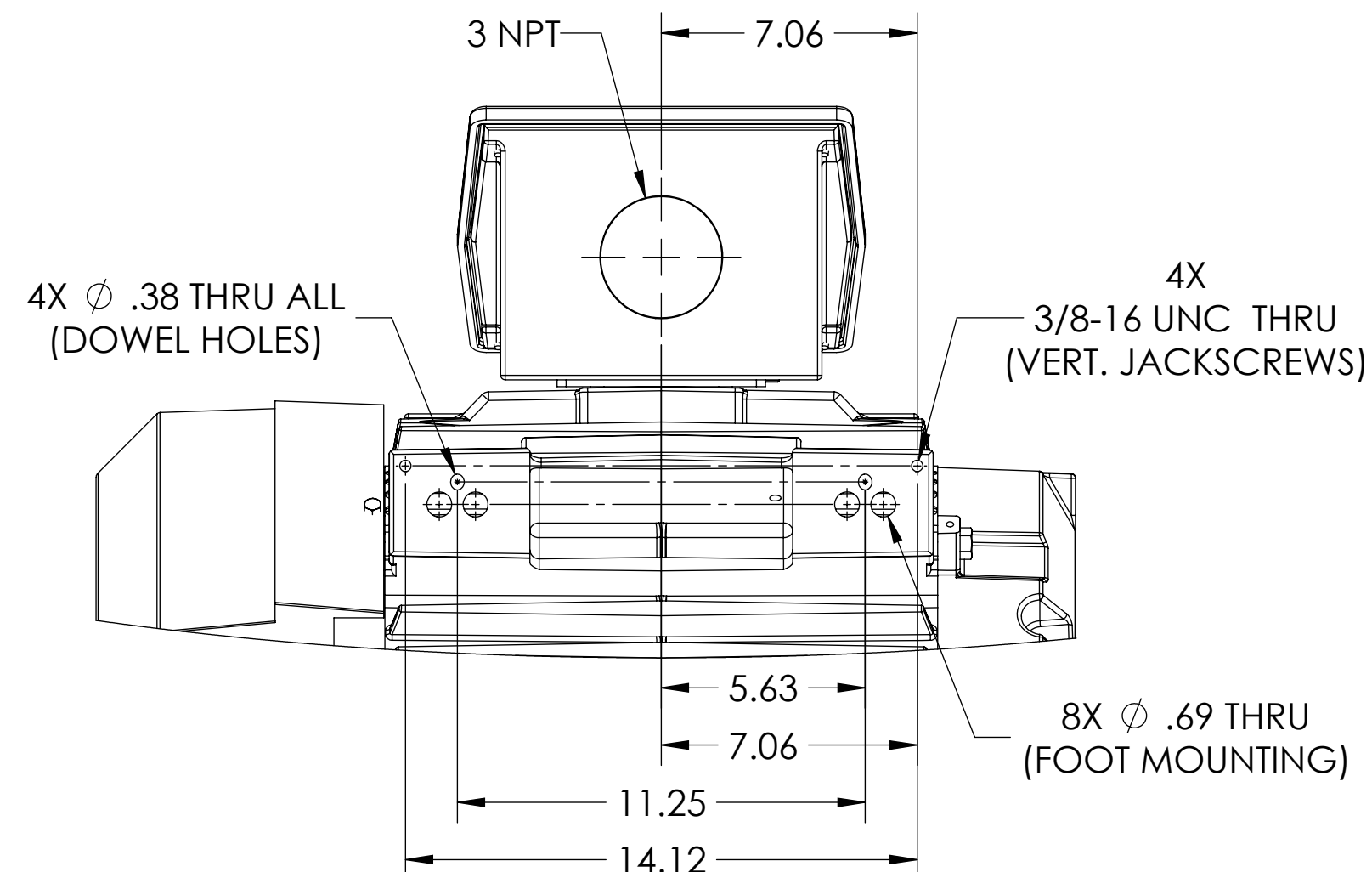
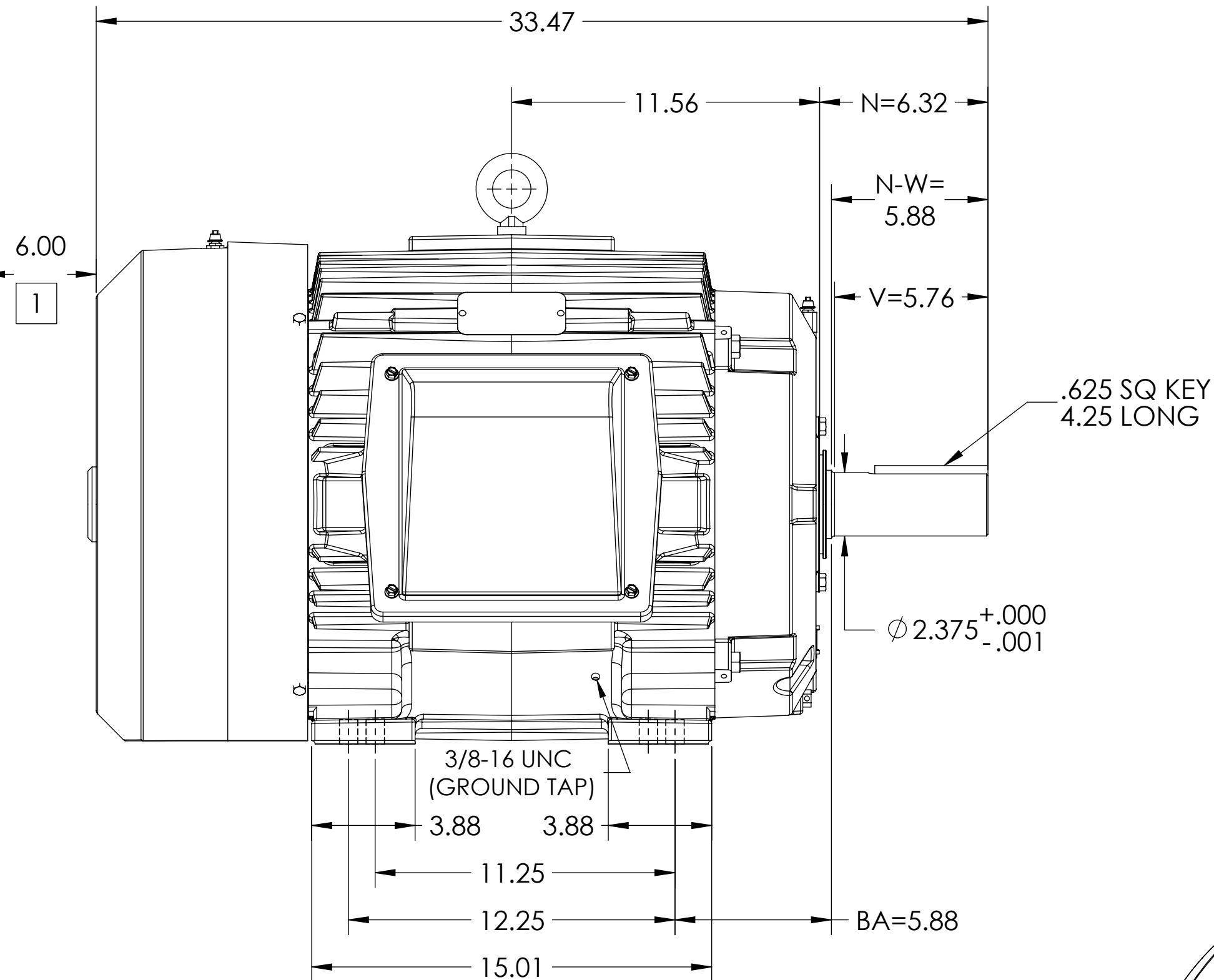
COOLING: FAN COOLED

ENCLOSURE: TOTALLY ENCLOSED

MOUNTING: FOOT, F-1

E364T/ E365T FRAME MOUNTING HOLES

ENCLOSURE ENAHNCEMENT: 841-XL



1 OBSTRUCTION MUST NOT ENCROACH ON AIR INLET.
WEIGHT (LBS) 846, WEIGHT MAY VARY BY 15% DEPENDING ON RATING
DIMENSIONS ARE IN INCHES.
CUSTOMER IS RESPONSIBLE FOR DETERMINING THAT MOTOR PERFORMANCE IS SUITABLE IN THE APPLICATION.

REV. DESC: UPDATE MODEL TO ADD EXTERNAL HARDWARE PER PROD MGM			
REV: C	VERSION: 03	REVISED: 02:09:45 10/03/2022	TDR: 000001196512
MODEL NO. 617428-603			
BY: ENFRAJ0		C	

BALDOR

E364/365T TEFC F1 FOOT/CI BOX/GRND TAP/841-XL

IF MOUNTING CLEARANCE DETAILS ARE REQUIRED, CONSULT FACTORY.
MAX PERMISSIBLE SHAFT RUNOUT WHEN FOR BALL BEARING IS .0015 & ROLLER BEARING IS .002 T.I.R.

DUTY MASTER ALTERNATING CURRENT MOTORS

SQUIRREL-CAGE INDUCTION

COOLING: FAN COOLED

ENCLOSURE: TOTALLY ENCLOSED

MOUNTING: FOOT, F-1

E364T/ E365T FRAME MOUNTING HOLES

ENCLOSURE ENAHNCEMENT: 841-XL

F

E

D

C

B

A

F

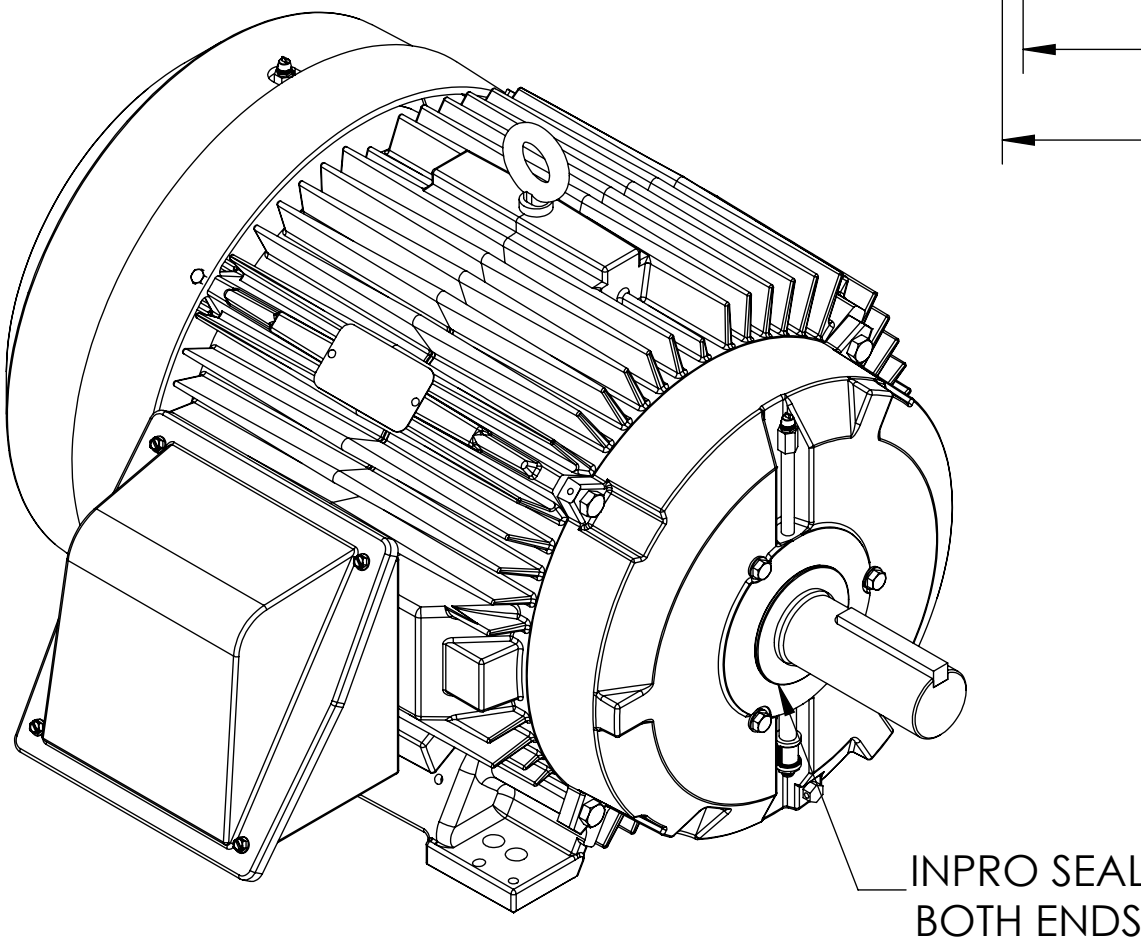
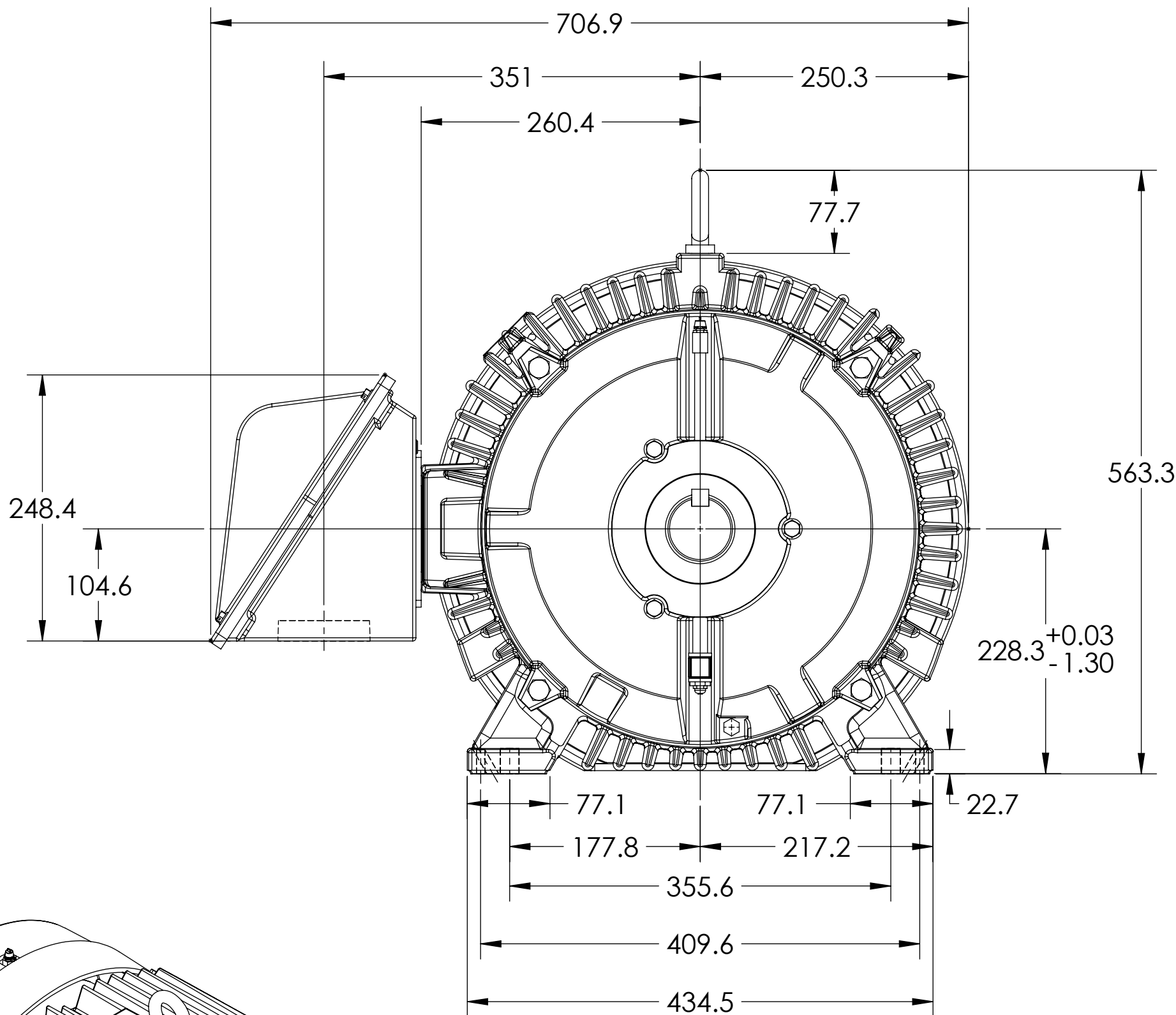
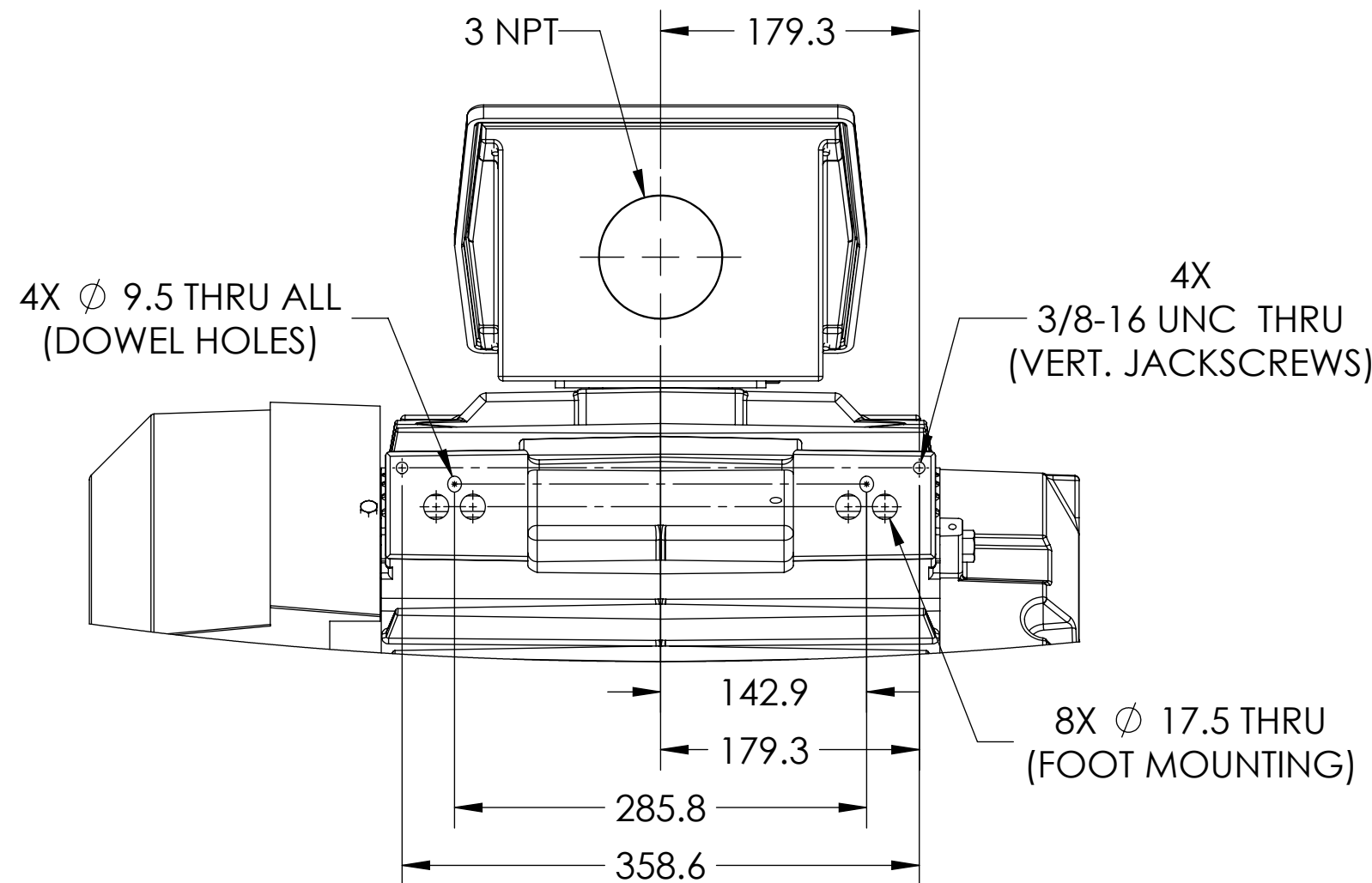
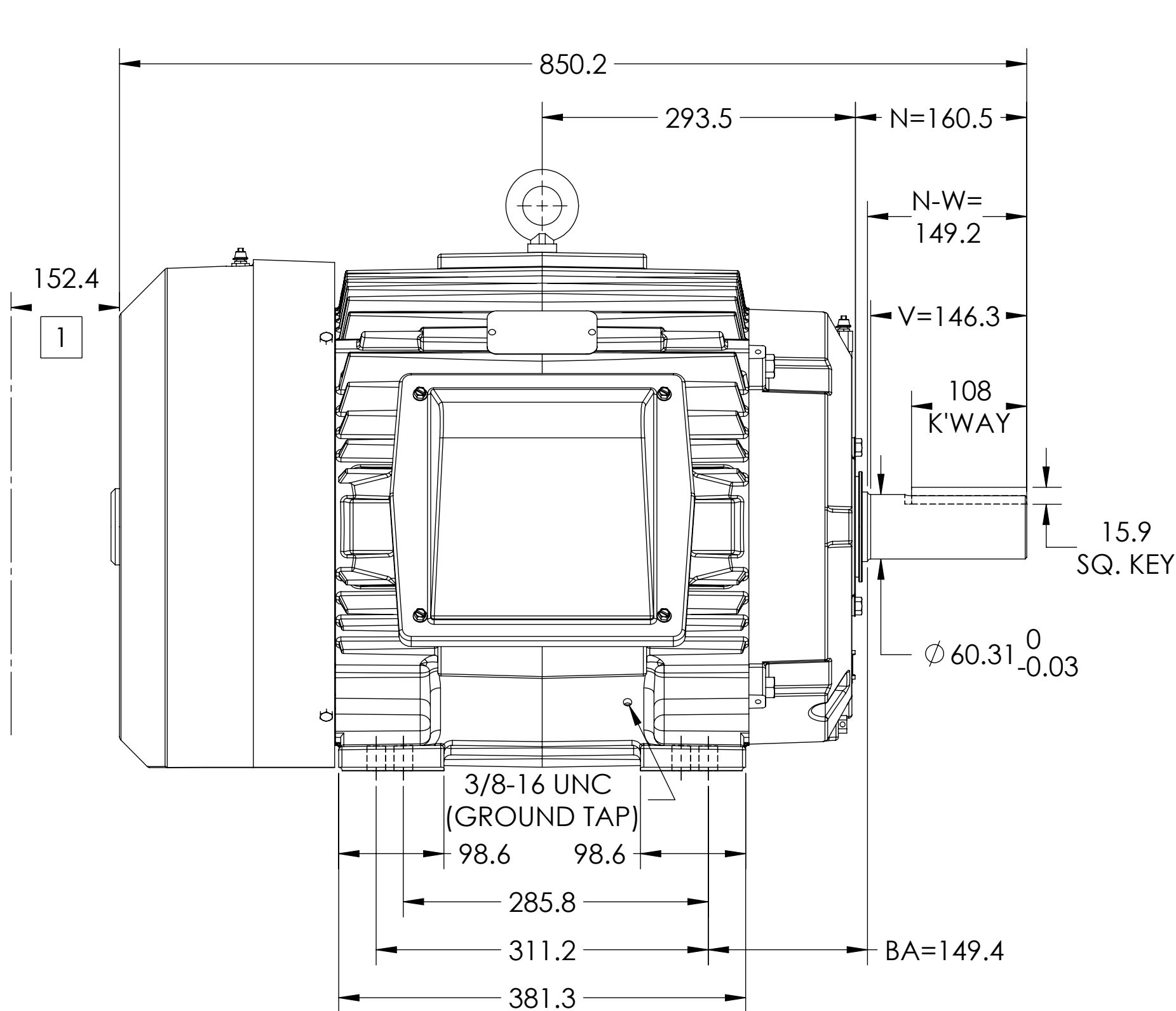
E

D

C

B

A



1 OBSTRUCTION MUST NOT ENCROACH ON AIR INLET.
WEIGHT (KG) 383.7, WEIGHT MAY VARY BY 15% DEPENDING ON RATING
DIMENSIONS ARE IN MILLIMETERS.
CUSTOMER IS RESPONSIBLE FOR DETERMINING THAT MOTOR PERFORMANCE IS SUITABLE IN THE APPLICATION.

REV. DESC: UPDATE MODEL TO ADD EXTERNAL HARDWARE PER PROD MGM			
REV: C	VERSION: 03	REVISED: 02:09:45 10/03/2022	TDR: 000001196512
MODEL NO. 617428-603			
BY: ENFRAJ0		C	

BALDOR

E364/365T TEFC F1 FOOT/CI BOX/GRND TAP/841-XL

IF MOUNTING CLEARANCE DETAILS ARE REQUIRED, CONSULT FACTORY.
MAX PERMISSIBLE SHAFT RUNOUT WHEN FOR BALL BEARING IS .04 & ROLLER BEARING IS .05T.I.R.