

ABB BALDOR RELIANCE III

Customer information packet

ECP84107T-5

25HP, 3520RPM, 3PH, 60HZ, 284TS, 1048M, TEFC, F

Class - CLI GP A,B,C,D

Division - Division II

Specifications

Enclosure	TEFC
Frame	284TS
Frame Material	Iron
Frequency	60.00 Hz
Haz Area Class and Group	CLI GP A,B,C,D
Haz Area Division	Division II
Motor Letter Type	Three Phase
Output @ Frequency	25.000 HP @ 60 HZ
Phase	3
Synchronous Speed @ Frequency	3600 RPM @ 60 HZ
Voltage @ Frequency	575.0 V @ 60 HZ
Agency Approvals	CCSA US CSA EEV NEMA PREMIUM NEMA PREMIUM (OLD LOGO) UR
Auxiliary Box	NO AUXILLARY BOX
Auxiliary Box Lead Termination	None
Base Indicator	Rigid
Bearing Grease Type	Polyrex EM (-20F +300F)
Blower	None
Constant Torque Speed Range	1.3
Current @ Voltage	23.000 A @ 575.0 V
Design Code	B
Drip Cover	No Drip Cover
Duty Rating	CONT
Efficiency @ 100% Load	91.7 %
Electrically Isolated Bearing	Not Electrically Isolated
Feedback Device	NO FEEDBACK
Haz Area Temp Code	T3C
Heater Indicator	No Heater
High Voltage Full Load Amps	23.0 a

Part Detail

Revision	-
Type	AC
Mech. spec.	
Base	
Status	PRD/A
Elec. spec.	M-10WG-Z277
Layout	10LYJ567
Eff. date	05-27-2026
CD Diagram	CD0006
Poles	02
Leads	3#10,0#
Proprietary	False
Created date	05-04-2026

Insulation Class	F
Inverter Code	Inverter Duty
KVA Code	F
Lifting Lugs	Standard Lifting Lugs
Locked Bearing Indicator	Locked Bearing
Max Speed	5400 rpm
Motor Lead Termination	Flying Leads
Motor Standards	NEMA
Motor Type	1048M
Mounting Arrangement	F1
Number of Poles	2
Overall Length	26.57 IN
Power Factor	90
Product Family	Chem Process S/P 32-8 IEEE 841
Pulley Face Code	Standard
Rodent Screen	None
Service Factor	1.15
Shaft Diameter	1.625 IN
Shaft Ground Indicator	No Shaft Grounding
Shaft Rotation	Reversible
Speed	3520 rpm
Speed Code	Single Speed
Starting Method	Direct on line
Thermal Device - Bearing	None
Thermal Device - Winding	None
Vibration Sensor Indicator	No Vibration Sensor
Winding Thermal 1	None
Winding Thermal 1 Location	00
Winding Thermal 2	None
Winding Thermal 2 Location	00

Nameplate

NP4332

CAT.NO.	ECP84107T-5	P/N		ENCLOSURE	TEFC
SPEC.	10-0000-5293	CC	010A	FRAME	284TS
HP	25	CLASS	F	HZ	60
RPM	3520	RPM MAX	5400	PH	3
VOLT	575	KVA-CODE	F	O.D.E. BRG.	55BC03X30X
AMP	23	MOTOR WEIGHT	418	GREASE	POLYREX EM
RATING	DO_C AMB-CONT	MAX. KVAR	1.85	BLANK	
NEMA-NOM-EFF	91.7	# OF ROTOR BARS	28	SER.F.	1.15
G.MIN.EFF	91.7	# OF STATOR SLOTS	36	PF	90
TEMP CODE	T3C	INVERTER-TEMP-CODE	200	INV.TYPE	PWM
TEMP =	160	C HP FR	60	C HP TO	90
CT HZ FROM	1.3	CT HZ TO	60		
HTR-VOLTS		HTR-AMPS		HTR-WATTS	
				MAX. SPACE HEATER TEMP.	
				VT HZ FROM	0-
				VT HZ TO	60

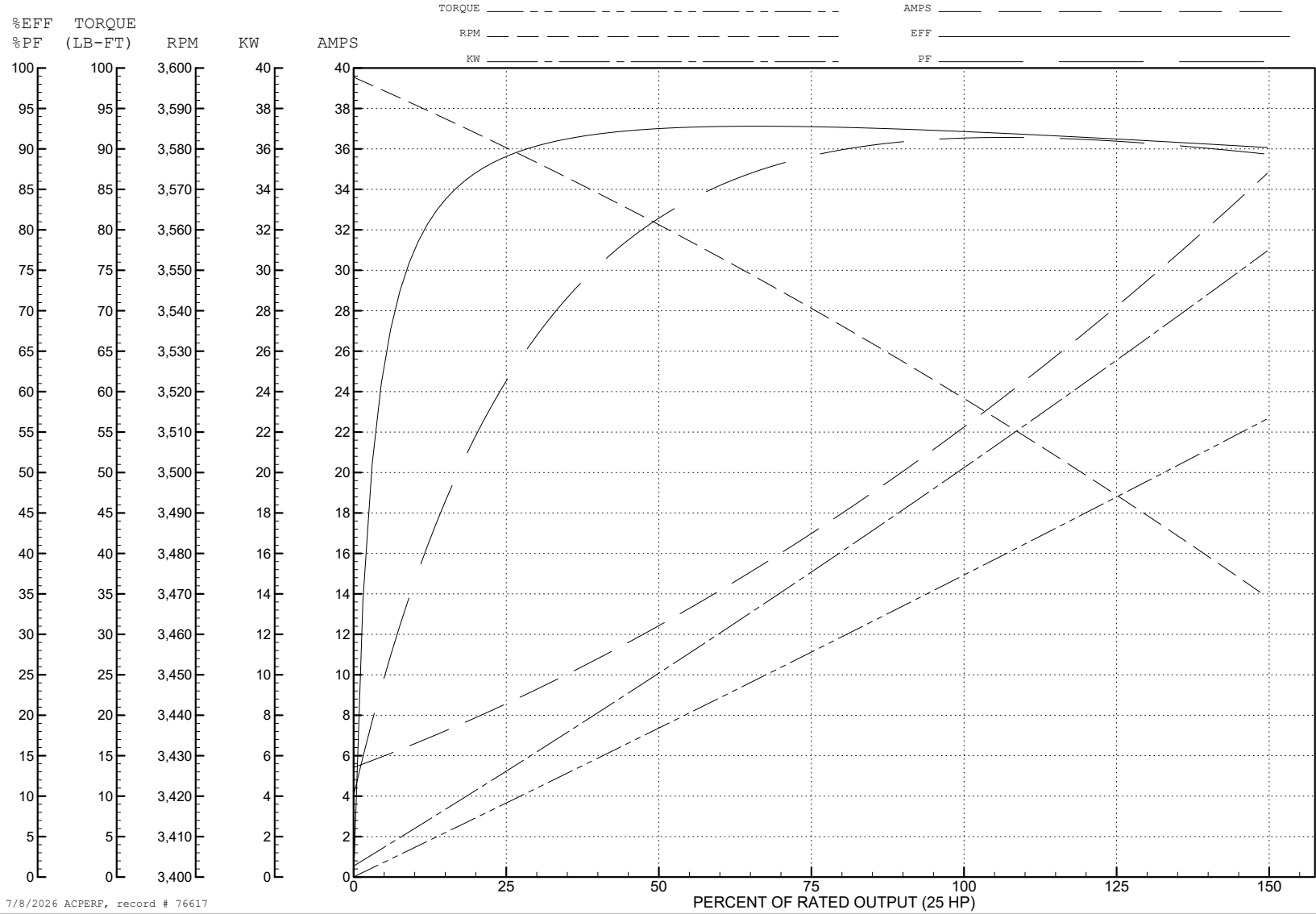
ABB Motors and Mechanical Inc.

WINDING # 10WGZ277

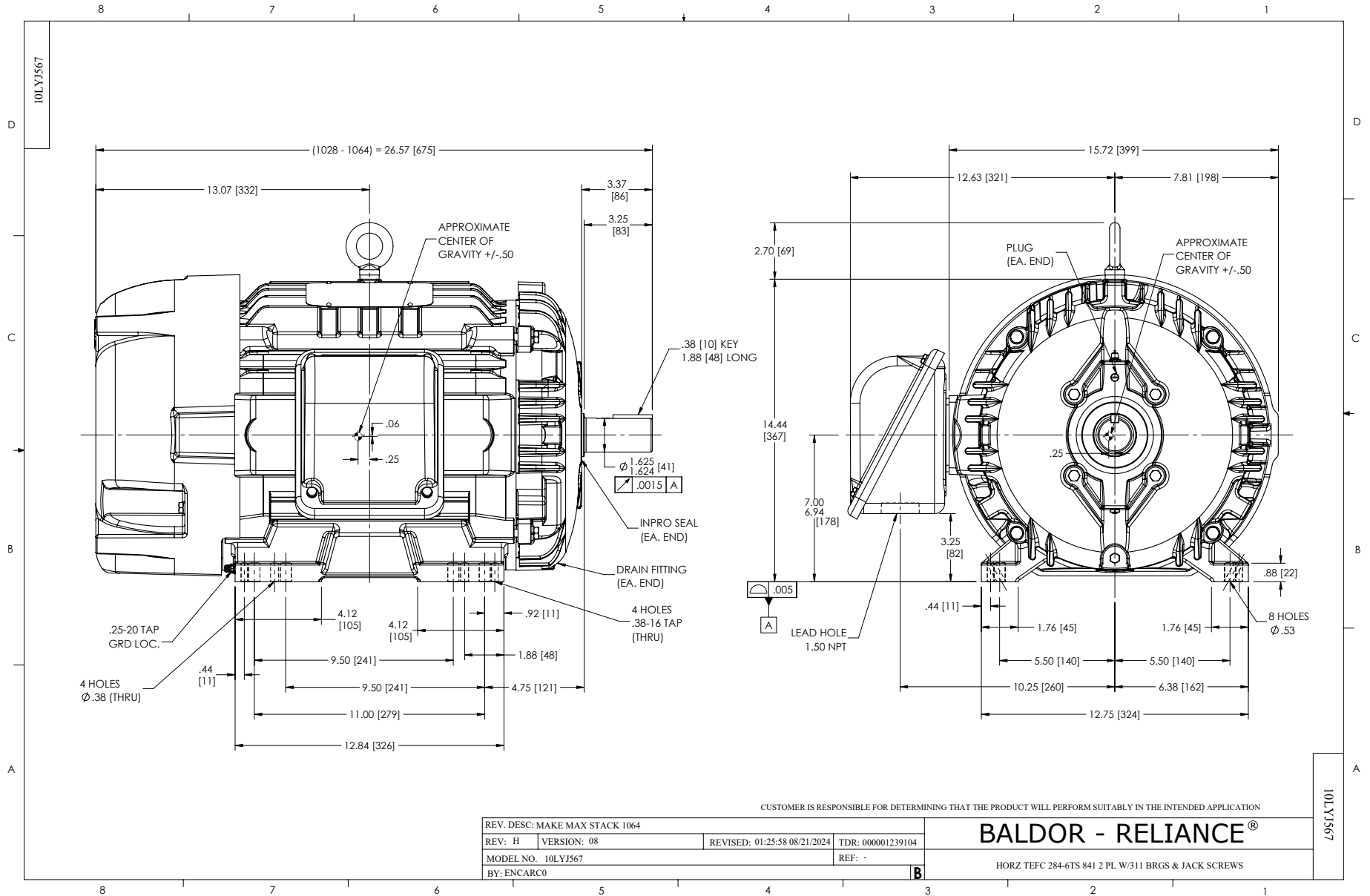
Typical performance - not guaranteed values.

25 HP 3 PH 60 HZ 3520 RPM 575 V 1048M

TORQUES (LB-FT): PO=132 PU=62.7 LR=69.7 LRA=143



7/8/2026 ACPERF, record # 76617



CD0006



NOTES:

1. THREE LEAD MOTOR MAY BE EITHER WYE CONNECTED OR DELTA CONNECTED.
2. INTERCHANGE ANY TWO LINE LEADS TO REVERSE ROTATION.
3. OPTIONAL THERMOSTATS ARE PROVIDED WHEN SPECIFIED.
4. ACTUAL NUMBER OF INTERNAL PARALLEL CIRCUITS MAY VARY.
5. LEAD COLORS ARE OPTIONAL. LEADS MUST BE NUMBERED AS SHOWN.

CD0006

REV. DESC: ADD CLASS CONN00000007		
REV. LTR: E	VERSION: 01	TDR: 000001099922
FILE: \AAA\00005\141	REVISED: 10:24:49 02/19/2019	BY: ENBRIRO
MTL: -		© □

BALDOR - RELIANCE®

3PH, SV, 3 LEADS, WYE OR DELTA CONNECTED

SH 1 of 1