



Customer information packet

ECP83661T-4

3HP, 1755RPM, 3PH, 60HZ, 182T, 0632M, TEFC, F1

Class - CLI GP A,B,C,D

Division - Division II

Specifications

Enclosure	TEFC
Frame	182T
Frame Material	Iron
Frequency	60.00 Hz
Haz Area Class and Group	CL I GP A,B,C,D
Haz Area Division	Division II
Motor Letter Type	Three Phase
Output @ Frequency	3.000 HP @ 60 HZ
Phase	3
Synchronous Speed @ Frequency	1800 RPM @ 60 HZ
Voltage @ Frequency	460.0 V @ 60 HZ
Agency Approvals	CCSA US CSA EEV NEMA PREMIUM NEMA_PREMIUM UR
Ambient Temperature	40 °C
Auxillary Box	No Auxillary Box
Auxillary Box Lead Termination	None
Base Indicator	Rigid
Bearing Grease Type	Polyrex EM (-20F +300F)
Blower	None
Constant Torque Speed Range	1.5
Current @ Voltage	4.100 A @ 460.0 V
Design Code	B
Drip Cover	No Drip Cover
Duty Rating	CONT
Efficiency @ 100% Load	89.5 %
Electrically Isolated Bearing	Not Electrically Isolated
Feedback Device	NO FEEDBACK
Front Face Code	Standard
Front Shaft Indicator	None

Part detail

Revision	AC
Type	AC
Mech. spec.	06H759
Base	
Status	PRD/A
Elec. spec.	06WGX240
Layout	06LYH759
Eff. date	07-17-2024
CD Diagram	CD0006
Poles	04
Leads	3#16
Proprietary	False
Created date	10-05-2011

Haz Area Temp Code	T3C
Heater Indicator	No Heater
High Voltage Full Load Amps	4.1 a
Insulation Class	F
Inverter Code	Inverter Duty
KVA Code	J
Lifting Lugs	Standard Lifting Lugs
Locked Bearing Indicator	Locked Bearing
Max Speed	2700 rpm
Motor Lead Exit	Ko Box
Motor Lead Quantity/Wire Size	3 @ 16 AWG
Motor Lead Termination	Ring Terminals
Motor Standards	NEMA
Motor Type	0632M
Mounting Arrangement	F1
Number of Poles	4
Overall Length	15.93 IN
Power Factor	77
Product Family	Chem Process S/P 32-8 IEEE 841
Pulley End Bearing Type	Ball
Pulley Face Code	Standard
Pulley Shaft Indicator	Standard
Rodent Screen	None
Service Factor	1.15
Shaft Diameter	1.125 IN
Shaft Extension Location	Pulley End
Shaft Ground Indicator	No Shaft Grounding
Shaft Rotation	Reversible
Shaft Slinger Indicator	Shaft Slinger
Speed	1755 rpm
Speed Code	Single Speed
Starting Method	Direct on line
Thermal Device - Bearing	None
Thermal Device - Winding	None

Vibration Sensor Indicator	No Vibration Sensor
Winding Thermal 1	None
Winding Thermal 2	None

Nameplate

NP4328

CAT.NO.	ECP83661T-4					
SPEC.	06H759X240G2					
HP	3 TE	IP	56			
VOLTS	460					
AMPS	4.1					
R.P.M.	1755					
FRAME	182T	HZ	60	PH	3	
SER.F.	1.15	CODE	J	DES.	B	CLASS F
RATING	40C AMB-CONT					
SN						
DE	6206	ODE	6206			
NEMA NOM. EFF.	89.5	P.F.	77			
GUAR. MIN. EFF.	87.5	CC	010A			
T. CODE	T3C	TEMP=	160			

NP3186

SPEC.	06H759X240G2		
ABMA DE BRG	30BC02X30X		
ABMA ODE BRG	30BC02X30X		
GREASE	POLYREX EM		
MOTOR WEIGHT	116	ROTOR BARS	28
		STATOR BARS	36
MAX. R.P.M.	2700	MAX. KVAR	.94
INV.TYPE	PWM		
T=	160		
CHP	60	TO	90
CT	1.5	TO	60
VT	-0	TO	60
HTR-VOLTS	N/A	HTR-AMPS	N/A
HTR-WATTS		MAX. SPACE HEATER TEMP.	N/A

AC Induction Motor Performance Data

Record # 92246

Typical performance - not guaranteed values

Winding: 06WGX240-R041		Type: 0632M		Enclosure: TEFC	
Nameplate Data			460 V, 60 Hz: Single Voltage Motor		
Rated Output (HP)	3	Full Load Torque	9.06 LB-FT		
Volts	460	Start Configuration	direct on line		
Full Load Amps	4.1	Breakdown Torque	33.1 LB-FT		
R.P.M.	1755	Pull-up Torque	18.2 LB-FT		
Hz	60	Locked-rotor Torque	20.4 LB-FT		
NEMA Design Code	B	Starting Current	29.8 A		
Service Factor (S.F.)	1.15	No-load Current	2.14 A		
NEMA Nom. Eff.	89.5	Line-line Res. @ 25°C	3.93 Ω		
Rating - Duty	40C	Temp. Rise @ Rated Load	35°C		
S.F. Amps	AMB-CONT	Temp. Rise @ S.F. Load	42°C		
		Locked-rotor Power Factor	41.4		
		Rotor inertia	0.298 lb-ft ²		

Load Characteristics 460 V, 60 Hz, 3 HP

% of Rated Load	25	50	75	100	125	150	S.F.
Power Factor	38	58	70	77	81	83	79
Efficiency	83.2	88.3	89.8	89.5	89.1	87.7	89.3
Speed	1790	1779	1769	1757	1744	1730	1749
Line amperes	2.34	2.79	3.39	4.1	4.91	5.86	4.59

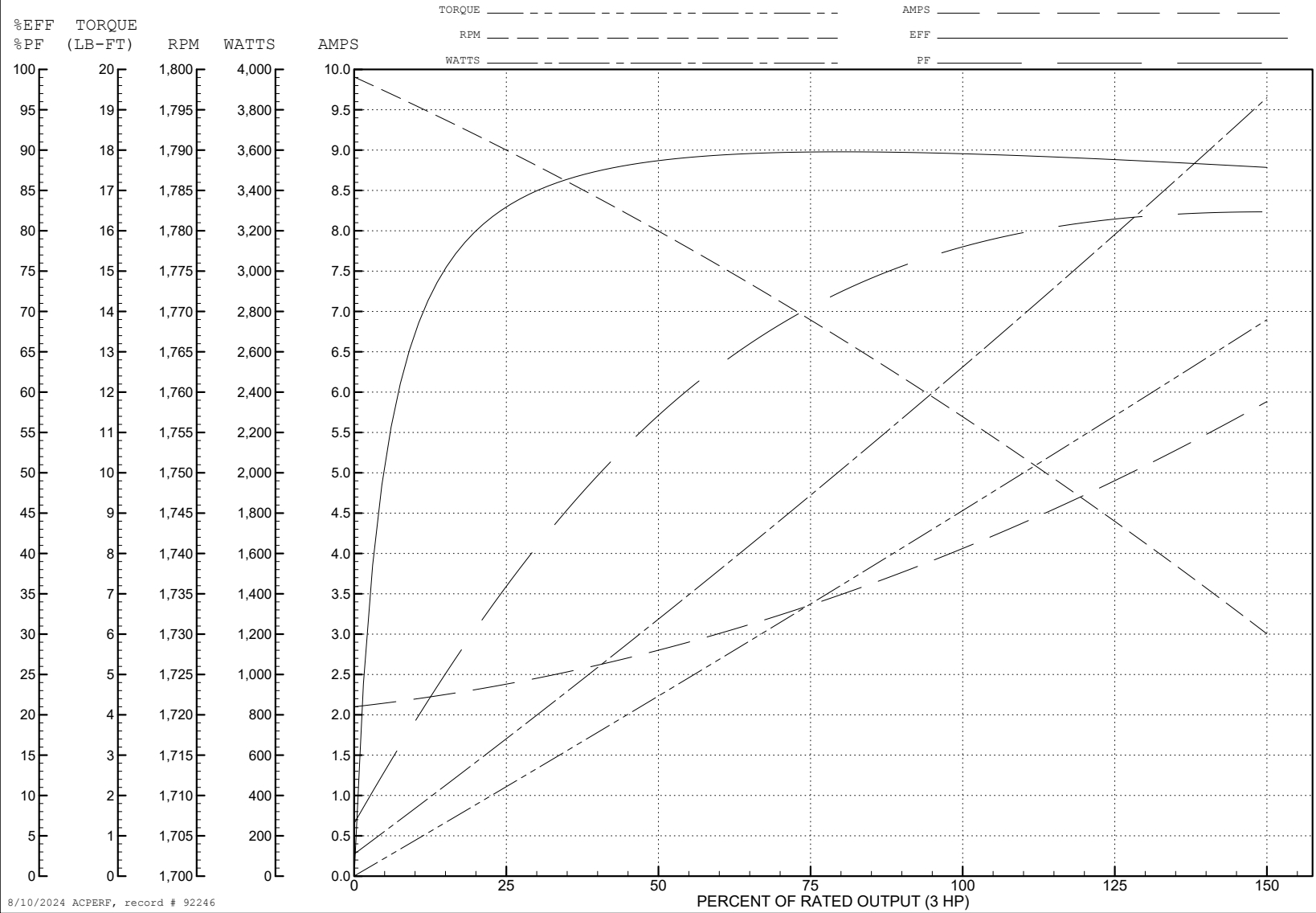
ABB Motors and Mechanical Inc.

WINDING # 06WGX240

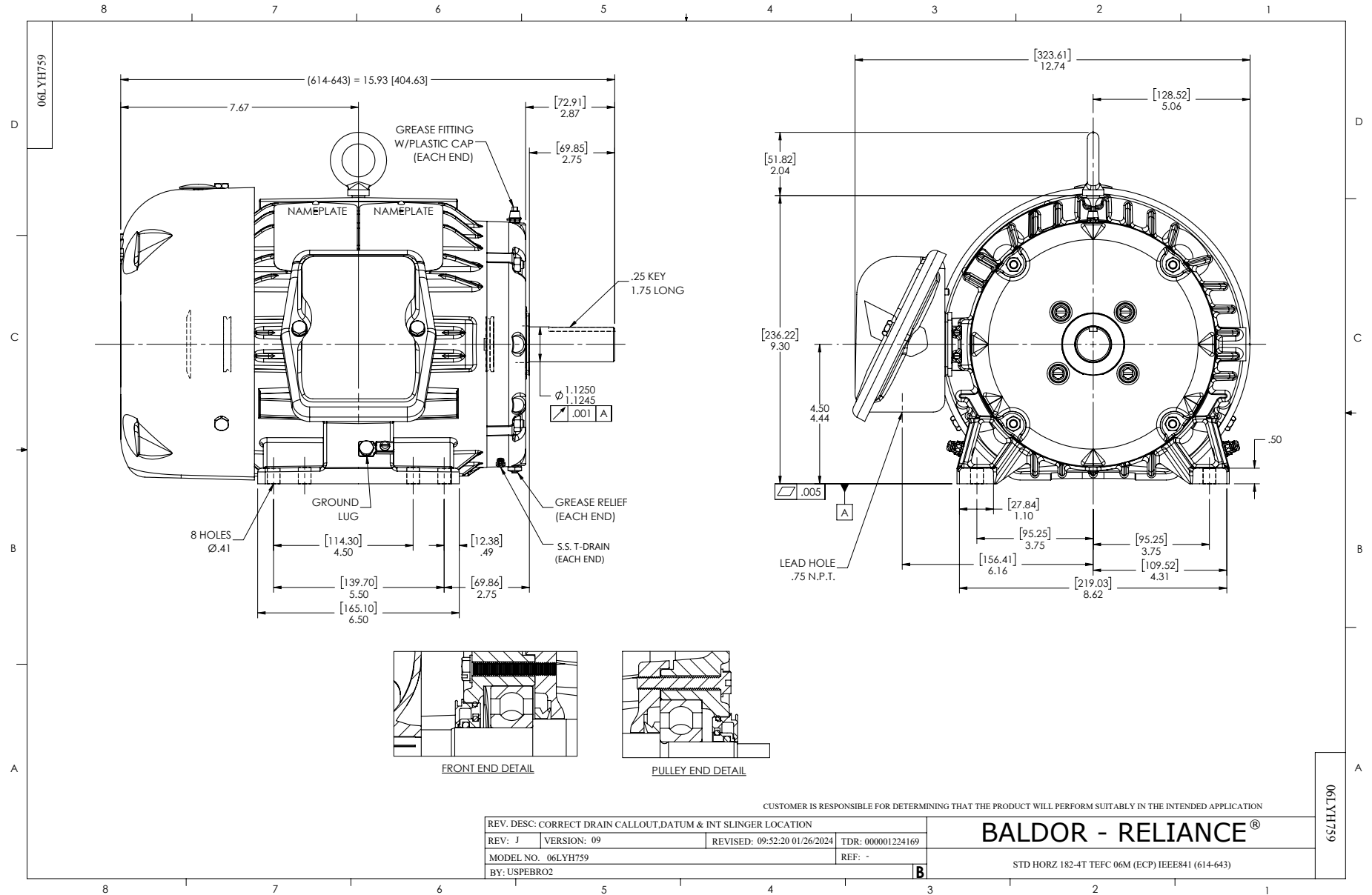
3 HP 3 PH 60 HZ 1755 RPM 460 V 0632M

Typical performance - not guaranteed values.

TORQUES (LB-FT): PO=33.1 PU=18.2 LR=20.4 LRA=29.8



8/10/2024 ACPERF, record # 92246



CD0006



NOTES:

1. THREE LEAD MOTOR MAY BE EITHER WYE CONNECTED OR DELTA CONNECTED.
2. INTERCHANGE ANY TWO LINE LEADS TO REVERSE ROTATION.
3. OPTIONAL THERMOSTATS ARE PROVIDED WHEN SPECIFIED.
4. ACTUAL NUMBER OF INTERNAL PARALLEL CIRCUITS MAY VARY.
5. LEAD COLORS ARE OPTIONAL. LEADS MUST BE NUMBERED AS SHOWN.

CD0006

REV. DESC: ADD CLASS CONN00000007		
REV. LTR: E	VERSION: 01	TDR: 000001099922
FILE: \AAA\00005\141	REVISED: 10:24:49 02/19/2019	BY: ENBRIRO
MTL: -	© □	

BALDOR - RELIANCE®

3PH, SV, 3 LEADS, WYE OR DELTA CONNECTED

SH 1 of 1