



Customer information packet

ECP83580T-5

1HP, 3450RPM, 3PH, 60HZ, 143T, 0516M, TEFC, F1

Class - CLI GP A,B,C,D

Division - Division II

Specifications

Enclosure	TEFC
Frame	143T
Frame Material	Iron
Frequency	60.00 Hz
Haz Area Class and Group	CLI GP A,B,C,D
Haz Area Division	Division II
Motor Letter Type	Three Phase
Output @ Frequency	1.000 HP @ 60 HZ
Phase	3
Synchronous Speed @ Frequency	3600 RPM @ 60 HZ
Voltage @ Frequency	575.0 V @ 60 HZ
Agency Approvals	CSA EEV NEMA PREMIUM NEMA_PREMIUM UR CCSA US
Ambient Temperature	40 °C
Auxillary Box	No Auxillary Box
Auxillary Box Lead Termination	None
Base Indicator	Rigid
Bearing Grease Type	Polyrex EM (-20F +300F)
Blower	None
Constant Torque Speed Range	2.5
Current @ Voltage	1.100 A @ 575.0 V
Design Code	B
Drip Cover	No Drip Cover
Duty Rating	CONT
Efficiency @ 100% Load	84.0 %
Electrically Isolated Bearing	Not Electrically Isolated
Enclosure Modification	841
Feedback Device	NO FEEDBACK
Front Face Code	Standard

Part detail

Revision	AT
Type	AC
Mech. spec.	05E811
Base	
Status	PRD/A
Elec. spec.	05WGW060
Layout	05LYE811
Eff. date	06-08-2023
CD Diagram	CD0006
Poles	02
Leads	3#18
Proprietary	False
Created date	11-21-2007

Front Shaft Indicator	None
Haz Area Temp Code	T4
Heater Indicator	No Heater
High Voltage Full Load Amps	1.1 a
Insulation Class	F
Inverter Code	Not Inverter
KVA Code	L
Lifting Lugs	Standard Lifting Lugs
Locked Bearing Indicator	Locked Bearing
Max Speed	5400 rpm
Motor Lead Exit	Ko Box
Motor Lead Quantity/Wire Size	3 @ 18 AWG
Motor Lead Termination	Flying Leads
Motor Standards	NEMA
Motor Type	0516M
Mounting Arrangement	F1
Number of Poles	2
Overall Length	12.87 IN
Power Factor	82
Product Family	Chem Process S/P 32-8 IEEE 841
Pulley End Bearing Type	Ball
Pulley Face Code	Standard
Pulley Shaft Indicator	Standard
Rodent Screen	None
Service Factor	1.15
Shaft Diameter	0.875 IN
Shaft Extension Location	Pulley End
Shaft Ground Indicator	No Shaft Grounding
Shaft Rotation	Reversible
Shaft Slinger Indicator	Shaft Slinger
Speed	3450 rpm
Speed Code	Single Speed
Starting Method	Direct on line
Thermal Device - Bearing	None

Thermal Device - Winding	None
Vibration Sensor Indicator	No Vibration Sensor
Winding Thermal 1	None
Winding Thermal 2	None

Nameplate

NP4328									
CAT.NO.	ECP83580T-5								
SPEC.	05E811W060G1								
HP	1 TE	IP	56						
VOLTS	575								
AMPS	1.1								
R.P.M.	3450								
FRAME	143T	HZ	60	PH	3				
SER.F.	1.15	CODE	L	DES.	B	CLASS	F		
RATING	40C AMB-CONT								
SN									
DE	6205	ODE	6205						
NEMA NOM. EFF.	84	P.F.	82						
GUAR. MIN. EFF.	81.5	CC	010A						
T. CODE	T4	TEMP=	135						

NP3186

SPEC.	05E811W060G1		
ABMA DE BRG	25BC02X30X		
ABMA ODE BRG	25BC02X30X		
GREASE	POLYREX EM		
MOTOR WEIGHT	63	ROTOR BARS	20
		STATOR BARS	24
MAX. R.P.M.	5400	MAX. KVAR	.19
INV.TYPE	PWM		
T=	135		
CHP	60	TO	90
CT	2.5	TO	60
VT	-0	TO	60
HTR-VOLTS	N/A	HTR-AMPS	N/A
HTR-WATTS	N/A	MAX. SPACE HEATER TEMP.	N/A

AC Induction Motor Performance Data

Record # 92319

Typical performance - not guaranteed values

Winding: 35WGG004-R012		Type: 3520M	Enclosure: TEFC	
Nameplate Data			460 V, 60 Hz: High Voltage Connection	
Rated Output (HP)	1	Full Load Torque	2.97 LB-FT	
Volts	230/460	Start Configuration	direct on line	
Full Load Amps	3.26/1.63	Breakdown Torque	13.7 LB-FT	
R.P.M.	1760	Pull-up Torque	7.8 LB-FT	
Hz	60 Phase	Locked-rotor Torque	9 LB-FT	
NEMA Design Code	B KVA Code	Starting Current	14.1 A	
Service Factor (S.F.)	1	No-load Current	1.08 A	
NEMA Nom. Eff.	85.5 Power Factor	Line-line Res. @ 25°C	16.9 Ω	
Rating - Duty	60C AMB-CONT	Temp. Rise @ Rated Load	24°C	
		Locked-rotor Power Factor	61.6	
		Rotor inertia	0.144 LB-FT ²	

Load Characteristics 460 V, 60 Hz, 1 HP

% of Rated Load	25	50	75	100	125	150
Power Factor	30	47	60	69	76	79
Efficiency	72.1	81.7	84.7	85.7	85.5	84.7
Speed	1791	1784	1776	1768	1759	1750
Line amperes	1.11	1.22	1.38	1.59	1.82	2.09

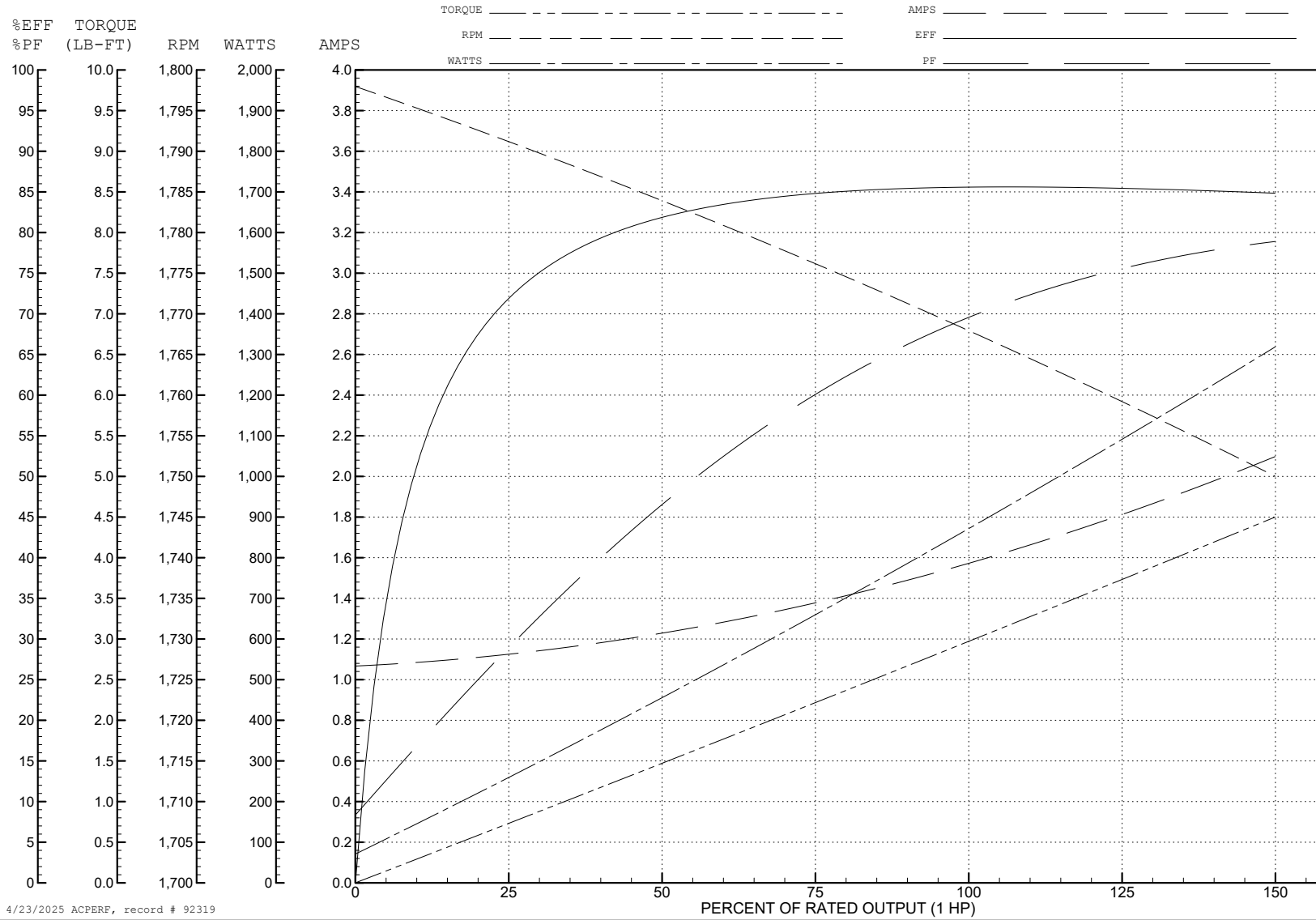
ABB Motors and Mechanical Inc.

WINDING # 35WGG004

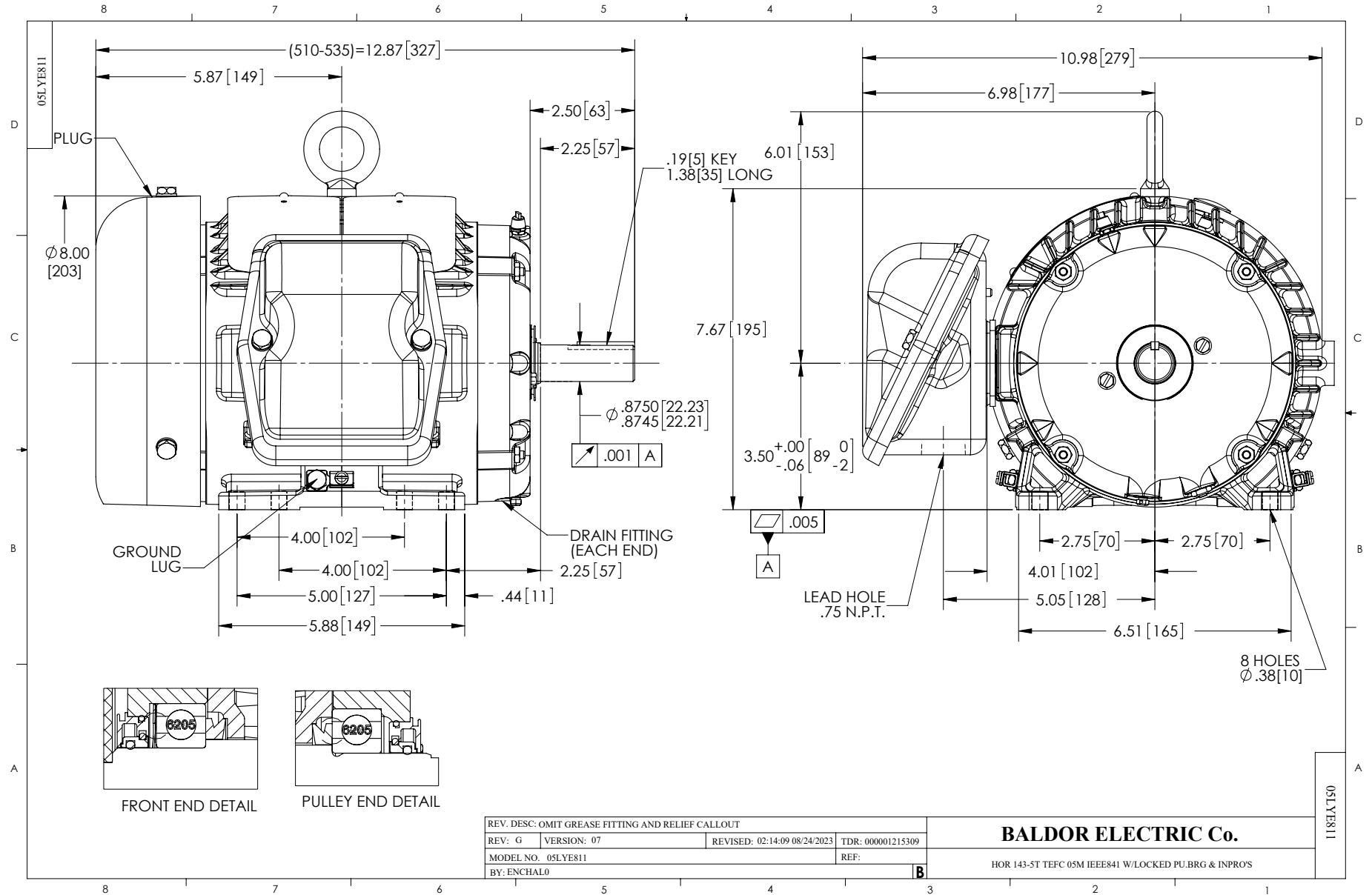
1 HP 3 PH 60 HZ 1760 RPM 460 V 3520M

Typical performance - not guaranteed values.

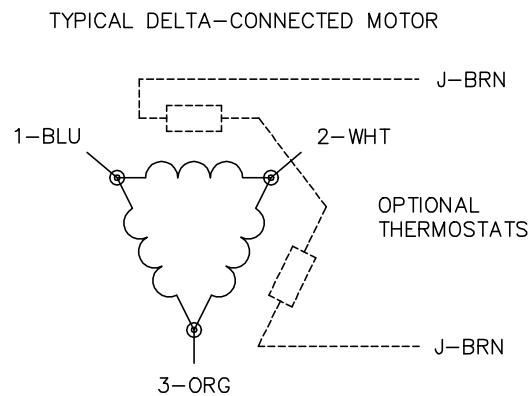
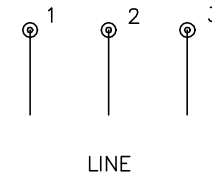
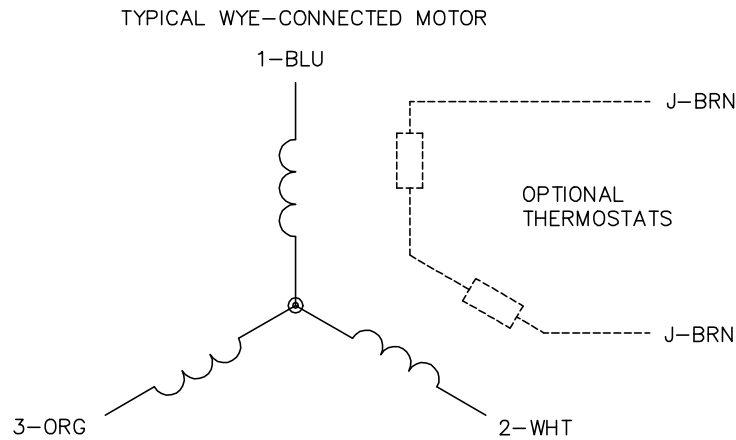
TORQUES (LB-FT): PO=13.7 PU=7.8 LR=9 LRA=14.1



4/23/2025 ACPERF, record # 92319



CD0006



NOTES:

1. THREE LEAD MOTOR MAY BE EITHER WYE CONNECTED OR DELTA CONNECTED.
2. INTERCHANGE ANY TWO LINE LEADS TO REVERSE ROTATION.
3. OPTIONAL THERMOSTATS ARE PROVIDED WHEN SPECIFIED.
4. ACTUAL NUMBER OF INTERNAL PARALLEL CIRCUITS MAY VARY.
5. LEAD COLORS ARE OPTIONAL. LEADS MUST BE NUMBERED AS SHOWN.

CD0006

REV. DESC: ADD CLASS CONN00000007		
REV. LTR: E	VERSION: 01	TDR: 000001099922
FILE: \AAA\00005\141	REVISED: 10:24:49 02/19/2019	BY: ENBRIRO
MTL: -	© □	

BALDOR - RELIANCE®

3PH, SV, 3 LEADS, WYE OR DELTA CONNECTED

SH 1 of 1