

ABB BALDOR RELIANCE III

Customer information packet

ECP82333T-4

15HP, 1760RPM, 3PH, 60HZ, 254T, TEFC, F1

Class - CLI GP A,B,C,D

Division - Division II

Specifications

Enclosure	TEFC
Frame	254T
Frame Material	Iron
Frequency	60.00 Hz
Haz Area Class and Group	CLI GP A,B,C,D
Haz Area Division	Division II
Motor Letter Type	Three Phase
Output @ Frequency	15.000 HP @ 60 HZ
Phase	3
Synchronous Speed @ Frequency	1800 RPM @ 60 HZ
Voltage @ Frequency	460.0 V @ 60 HZ
Agency Approvals	CCSA US CSA EEV NEMA PREMIUM NEMA_PREMIUM UR
Ambient Temperature	40 °C
Auxiliary Box	NO AUXILLARY BOX
Auxiliary Box Lead Termination	None
Base Indicator	Rigid
Bearing Grease Type	Polyrex EM (-20F +300F)
Blower	None
Constant Torque Speed Range	1.3
Current @ Voltage	17.600 A @ 460.0 V
Design Code	B
Drip Cover	No Drip Cover
Duty Rating	CONT
Efficiency @ 100% Load	92.4 %
Electrically Isolated Bearing	Not Electrically Isolated
Enclosure Modification	841
Feedback Device	NO FEEDBACK
Haz Area Temp Code	T3C

Part Detail

Revision	R
Type	AC
Mech. spec.	
Base	
Status	PRD/A
Elec. spec.	09WGZ997
Layout	09LYJ287
Eff. date	11-14-2023
CD Diagram	CD0006
Poles	04
Leads	3#12
Proprietary	False
Created date	11-27-2018

Heater Indicator	No Heater
High Voltage Full Load Amps	17.6 a
Insulation Class	F
Inverter Code	Inverter Duty
IP Rating	IP56
KVA Code	G
Lifting Lugs	Standard Lifting Lugs
Locked Bearing Indicator	Locked Bearing
Max Speed	2700 rpm
Motor Lead Termination	Ring Terminals
Motor Standards	NEMA
Motor Type	0944M
Mounting Arrangement	F1
Number of Poles	4
Overall Length	24.78 IN
Power Factor	85
Product Family	Chem Process S/P 32-8 IEEE 841
Pulley Face Code	Standard
Rodent Screen	None
Service Factor	1.15
Shaft Diameter	1.625 IN
Shaft Ground Indicator	No Shaft Grounding
Shaft Rotation	Reversible
Speed	1760 rpm
Speed Code	Single Speed
Starting Method	Direct on line
Thermal Device - Bearing	None
Thermal Device - Winding	None
Vibration Sensor Indicator	No Vibration Sensor
Winding Thermal 1	None
Winding Thermal 2	None

Nameplate

NP4332

CAT.NO.	ECP82333T-4	P/N		ENCLOSURE	TEFC
SPEC.	09-0000-0860	CC	010A	FRAME	254T
HP	15	CLASS	F	HZ	60
RPM	1760	RPM MAX	2700	ODE BRG	6309
VOLT	460	PH	3	DE BRG	6309
AMP	17.6	DES	B	D.E. BRG.	45BC03X30X
RATING	40C AMB-CONT	PH	3	D.E. BRG.	45BC03X30X
NEMA-NOM-EFF	92.4	KVA-CODE	G	O.D.E. BRG.	45BC03X30X
G.MIN.EFF	91	MOTOR WEIGHT	317	GREASE	POLYREX EM
TEMP CODE	T3C	MAX. KVAR	3.5	BLANK	
TEMP =	160	SER.F.	1.15	IP	56
CT HZ FROM	1.3	# OF ROTOR BARS	40	INV.TYPE	PWM
HTR-VOLTS		# OF STATOR SLOTS	48	PF	85
HTR-AMPS		INVERTER-TEMP-CODE	180	CT HZ TO	60
HTR-WATTS		C HP FR	60	C HP TO	90
MAX. SPACE HEATER TEMP.		CT HZ FROM	1.3	CT HZ TO	60
VT HZ FROM		VT HZ TO	60		

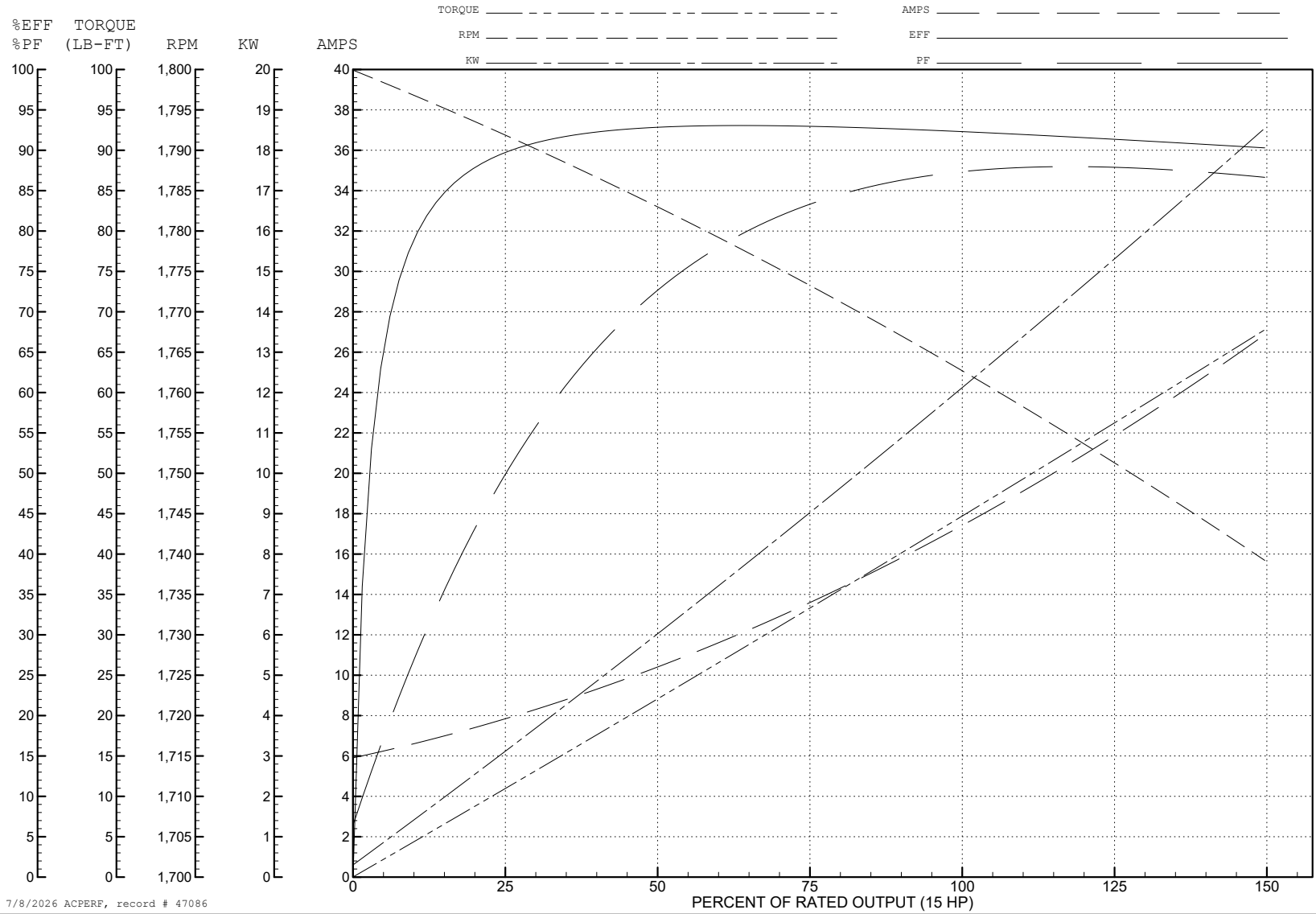
ABB Motors and Mechanical Inc.

WINDING # 09WGZ997

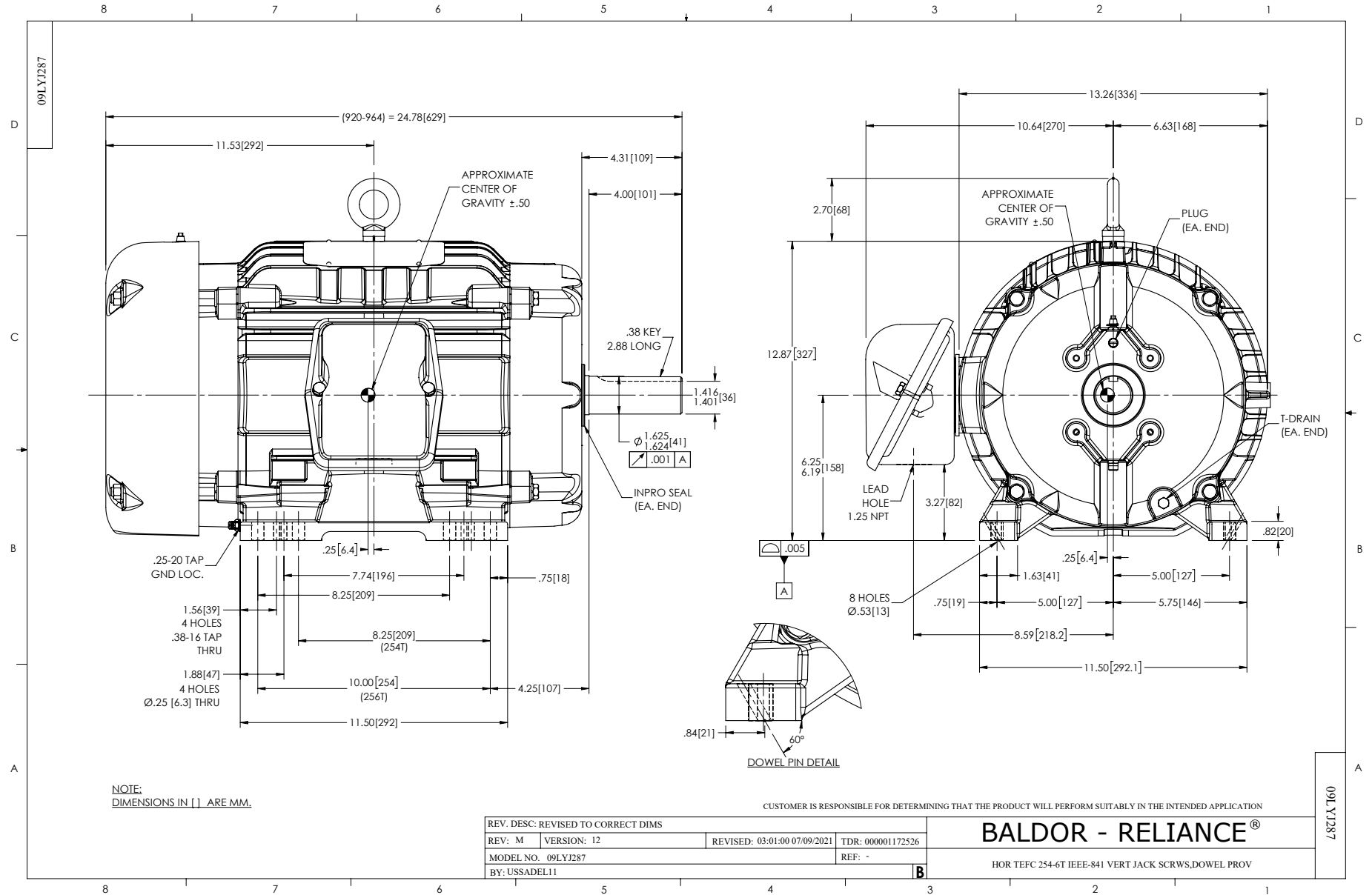
Typical performance - not guaranteed values.

15 HP 3 PH 60 HZ 1760 RPM 460 V 0944M

TORQUES (LB-FT): PO=163 PU=53.3 LR=73.2 LRA=108



7/8/2026 ACPERF, record # 47086



CD0006



NOTES:

1. THREE LEAD MOTOR MAY BE EITHER WYE CONNECTED OR DELTA CONNECTED.
2. INTERCHANGE ANY TWO LINE LEADS TO REVERSE ROTATION.
3. OPTIONAL THERMOSTATS ARE PROVIDED WHEN SPECIFIED.
4. ACTUAL NUMBER OF INTERNAL PARALLEL CIRCUITS MAY VARY.
5. LEAD COLORS ARE OPTIONAL. LEADS MUST BE NUMBERED AS SHOWN.

CD0006

REV. DESC: ADD CLASS CONN00000007		
REV. LTR: E	VERSION: 01	TDR: 000001099922
FILE: \AAA\00005\141	REVISED: 10:24:49 02/19/2019	BY: ENBRIRO
MTL: -	© □	

BALDOR - RELIANCE®

3PH, SV, 3 LEADS, WYE OR DELTA CONNECTED

SH 1 of 1