



---

# Customer information packet

## ECP82332T-5

10HP, 1180RPM, 3PH, 60HZ, 256T, TEFC, F1  
Class - CLI GP A,B,C,D  
Division - Division II

## Specifications

Enclosure	TEFC
Frame	256T
Frame Material	Iron
Frequency	60.00 Hz
Motor Letter Type	Three Phase
Output @ Frequency	10.000 HP @ 60 HZ
Phase	3
Synchronous Speed @ Frequency	1200 RPM @ 60 HZ
Voltage @ Frequency	575.0 V @ 60 HZ
XP Class and Group	CLIGP A,B,C,D
XP Division	Division II
Agency Approvals	CCSA US CSA EEV UR
Ambient Temperature	40 °C
Auxillary Box	No Auxillary Box
Auxillary Box Lead Termination	None
Base Indicator	Rigid
Bearing Grease Type	Polyrex EM (-20F +300F)
Blower	None
Constant Torque Speed Range	1
Current @ Voltage	11.400 A @ 575.0 V
Design Code	B
Drip Cover	No Drip Cover
Duty Rating	CONT
Efficiency @ 100% Load	91.7 %
Electrically Isolated Bearing	Not Electrically Isolated
Enclosure Modification	841
Feedback Device	NO FEEDBACK
Heater Indicator	No Heater
High Voltage Full Load Amps	11.4 a
Insulation Class	F

## Part detail

Revision	M
Type	AC
Mech. spec.	
Base	
Status	PRD/A
Elec. spec.	09WGT014
Layout	09LYJ287
Eff. date	07-01-2022
CD Diagram	CD0006
Poles	06
Leads	3#12
Proprietary	False
Created date	11-27-2018

<b>Inverter Code</b>	<b>Inverter Duty</b>
<b>IP Rating</b>	IP56
<b>KVA Code</b>	H
<b>Lifting Lugs</b>	Standard Lifting Lugs
<b>Locked Bearing Indicator</b>	Locked Bearing
<b>Max Speed</b>	1800 rpm
<b>Motor Lead Termination</b>	Ring Terminals
<b>Motor Standards</b>	NEMA
<b>Motor Type</b>	0960M
<b>Mounting Arrangement</b>	F1
<b>Number of Poles</b>	6
<b>Overall Length</b>	24.68 IN
<b>Power Factor</b>	71
<b>Product Family</b>	Chem Process S/P 32-8 IEEE 841
<b>Pulley Face Code</b>	Standard
<b>Rodent Screen</b>	None
<b>Service Factor</b>	1.15
<b>Shaft Diameter</b>	1.625 IN
<b>Shaft Ground Indicator</b>	No Shaft Grounding
<b>Shaft Rotation</b>	Reversible
<b>Speed</b>	1180 rpm
<b>Speed Code</b>	Single Speed
<b>Starting Method</b>	Direct on line
<b>Thermal Device - Winding</b>	None
<b>Vibration Sensor Indicator</b>	No Vibration Sensor
<b>Winding Thermal 1</b>	None
<b>Winding Thermal 2</b>	None
<b>XP Temp Code</b>	T3C

**Nameplate**

**NP4332**

<b>STK.NO.</b>	ECP82332T-5	<b>P/N</b>		<b>ENCLOSURE</b>	TEFC
<b>SPEC.</b>	09-0000-0864	<b>CC</b>	010A	<b>FRAME</b>	256T
<b>HP</b>	10	<b>CLASS</b>	F	<b>HZ</b>	60
<b>RPM</b>	1180	<b>RPM MAX</b>	1800	<b>ODE BRG</b>	6309
<b>VOLT</b>	575	<b>PH</b>	3	<b>DE BRG</b>	6309
<b>AMP</b>	11.4	<b>DES</b>	B	<b>D.E. BRG.</b>	45BC03X30X
<b>RATING</b>	40C AMB-CONT	<b>KVA-CODE</b>	H	<b>O.D.E. BRG.</b>	45BC03X30X
<b>NEMA-NOM-EFF</b>	91.7	<b>MOTOR WEIGHT</b>	357	<b>GREASE</b>	POLYREX EM
<b>G.MIN.EFF</b>	90.2	<b>MAX. KVAR</b>	5.2	<b>BLANK</b>	
<b>TEMP CODE</b>	T3C	<b># OF ROTOR BARS</b>	27	<b>SER.F.</b>	1.15
<b>TEMP =</b>	160	<b># OF STATOR SLOTS</b>	36	<b>IP</b>	56
<b>CT HZ FROM</b>	0-	<b>PF</b>	71	<b>INV.TYPE</b>	PWM
<b>HTR-VOLTS</b>		<b>INVERTER-TEMP-CODE</b>	180		
<b>HTR-AMPS</b>		<b>C HP FR</b>	60	<b>C HP TO</b>	90
<b>HTR-WATTS</b>		<b>CT HZ TO</b>	60		
<b>MAX. SPACE HEATER TEMP.</b>				<b>VT HZ FROM</b>	0
				<b>VT HZ TO</b>	60

**AC Induction Motor Performance Data**

Record # 47076

Typical performance - not guaranteed values

Winding: 09WGT014-R002		Type: 0960M	Enclosure: TEFC	
<b>Nameplate Data</b>			<b>575 V, 60 Hz: Single Voltage Motor</b>	
Rated Output (HP)	10	Full Load Torque	44.3 LB-FT	
Volts	575	Start Configuration	direct on line	
Full Load Amps	11.4	Breakdown Torque	127 LB-FT	
R.P.M.	1180	Pull-up Torque	53.4 LB-FT	
Hz	60 Phase	Locked-rotor Torque	70.7 LB-FT	
NEMA Design Code	B KVA Code	Starting Current	68.4 A	
Service Factor (S.F.)	1.15	No-load Current	5.81 A	
NEMA Nom. Eff.	91.7 Power Factor	Line-line Res. @ 25°C	1.15 Ω	
Rating - Duty	40C AMB-CONT	Temp. Rise @ Rated Load	38°C	
S.F. Amps		Temp. Rise @ S.F. Load	46°C	
		Rotor inertia	4.82 LB-FT <sup>2</sup>	

**Load Characteristics 575 V, 60 Hz, 10 HP**

% of Rated Load	25	50	75	100	125	150	S.F.
Power Factor	35	55	66	71	74	75	73
Efficiency	85.5	90.5	91.8	91.7	91	89.5	91.3
Speed	1195	1191	1187	1182	1175	1168	1178
Line amperes	6.27	7.57	9.34	11.4	13.9	16.9	12.9

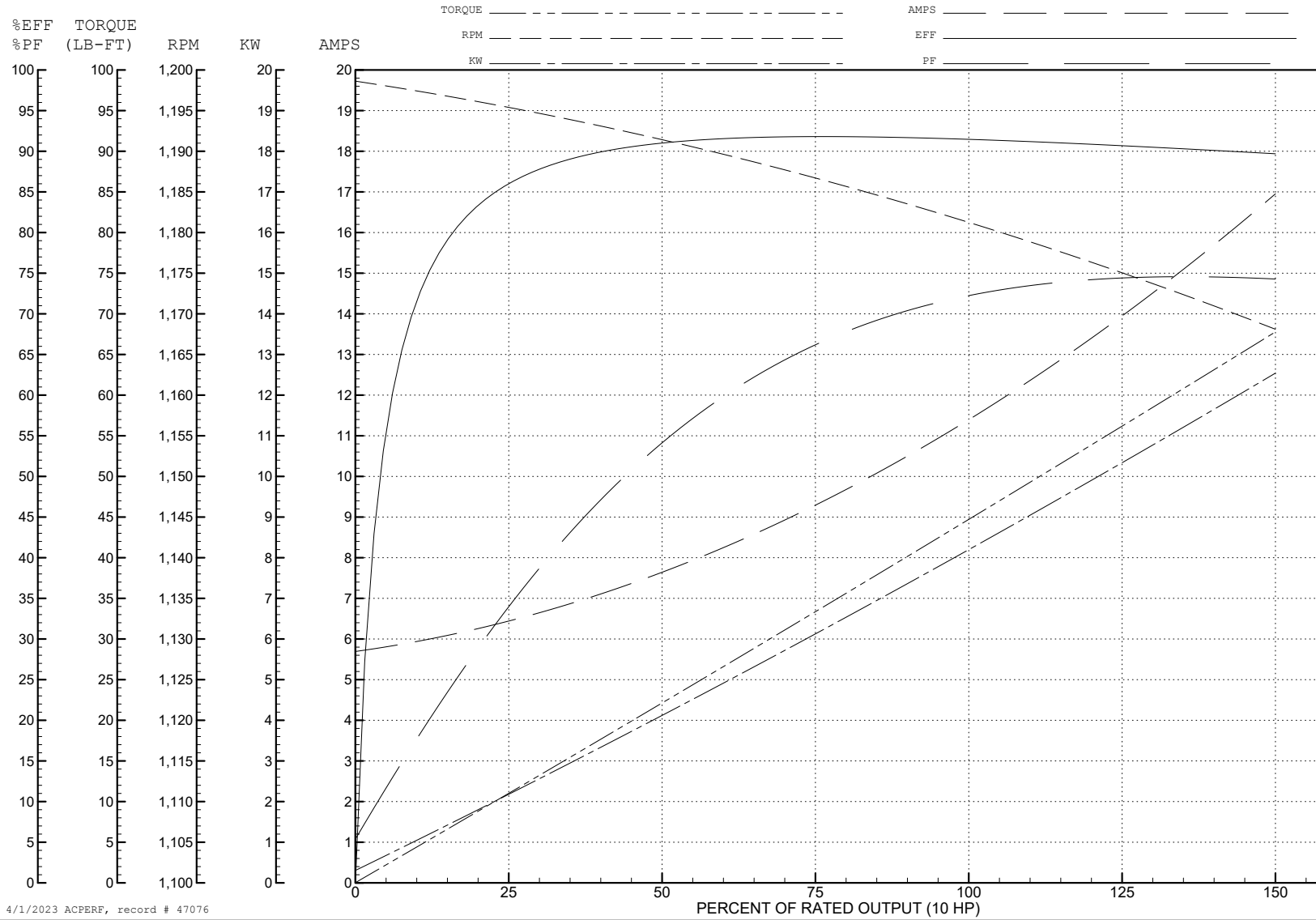
ABB Motors and Mechanical Inc.

WINDING # 09WGT014

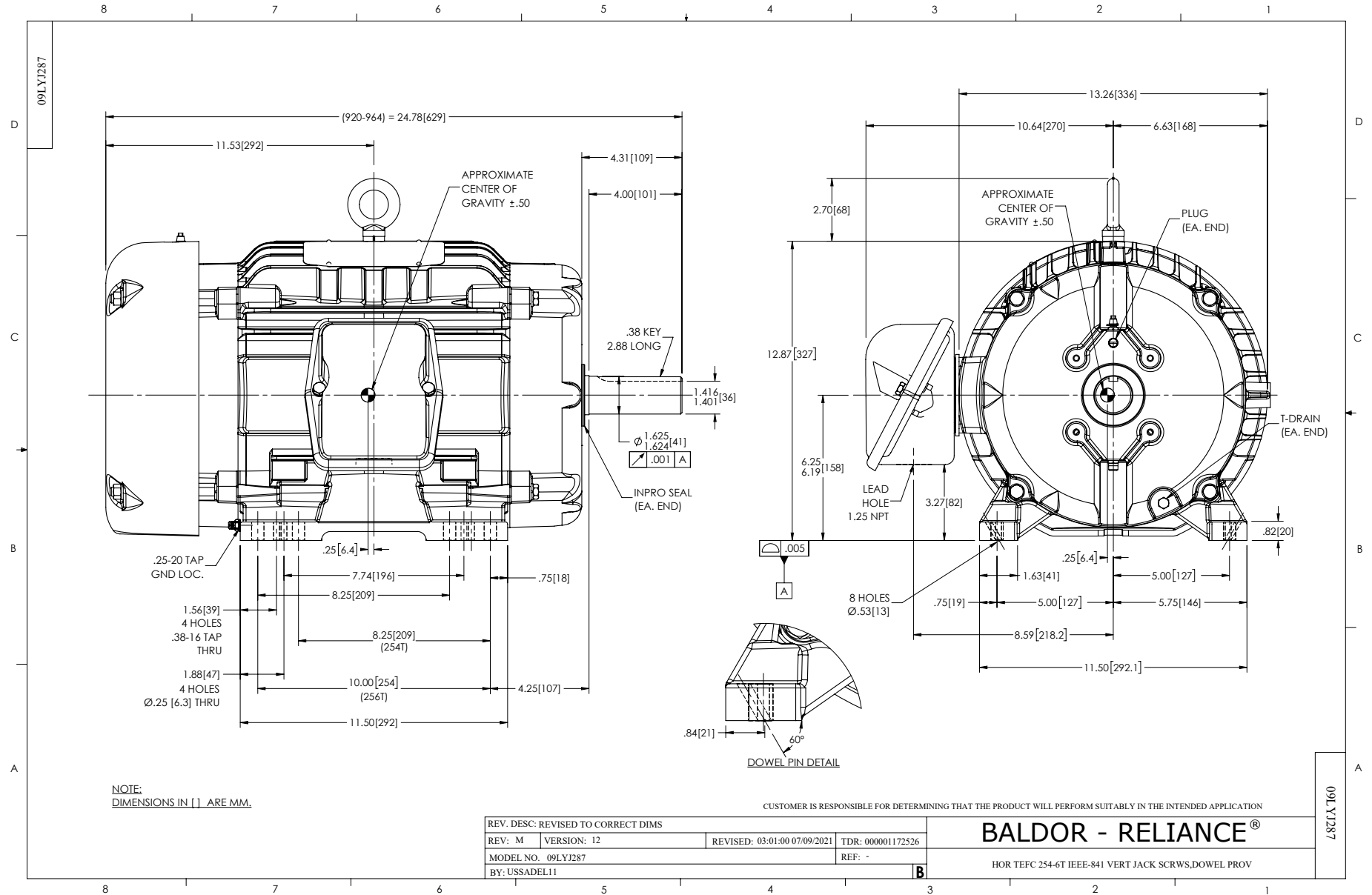
Typical performance - not guaranteed values.

10 HP 3 PH 60 HZ 1180 RPM 575 V 0960M

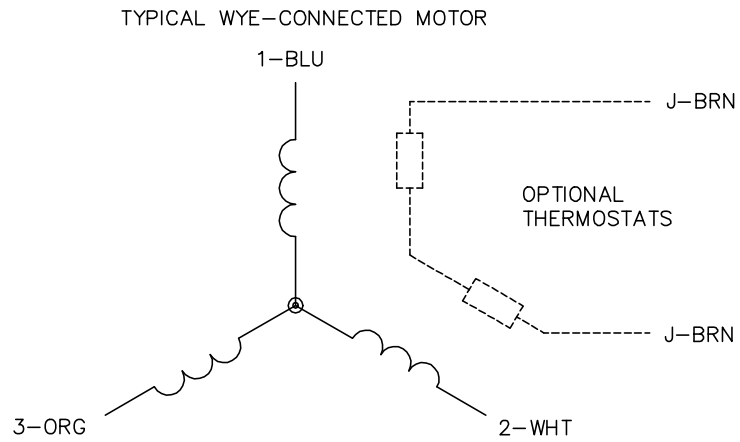
TORQUES (LB-FT): PO=127 PU=53.4 LR=70.7 LRA=68.4



4/1/2023 ACPERF, record # 47076



CD0006



NOTES:

1. THREE LEAD MOTOR MAY BE EITHER WYE CONNECTED OR DELTA CONNECTED.
2. INTERCHANGE ANY TWO LINE LEADS TO REVERSE ROTATION.
3. OPTIONAL THERMOSTATS ARE PROVIDED WHEN SPECIFIED.
4. ACTUAL NUMBER OF INTERNAL PARALLEL CIRCUITS MAY VARY.
5. LEAD COLORS ARE OPTIONAL. LEADS MUST BE NUMBERED AS SHOWN.

CD0006

REV. DESC: ADD CLASS CONN00000007		
REV. LTR: E	VERSION: 01	TDR: 000001099922
FILE: \AAA\00005\141	REVISED: 10:24:49 02/19/2019	BY: ENBRIRO
MTL: -	© □	

**BALDOR - RELIANCE®**

3PH, SV, 3 LEADS, WYE OR DELTA CONNECTED

SH 1 of 1