

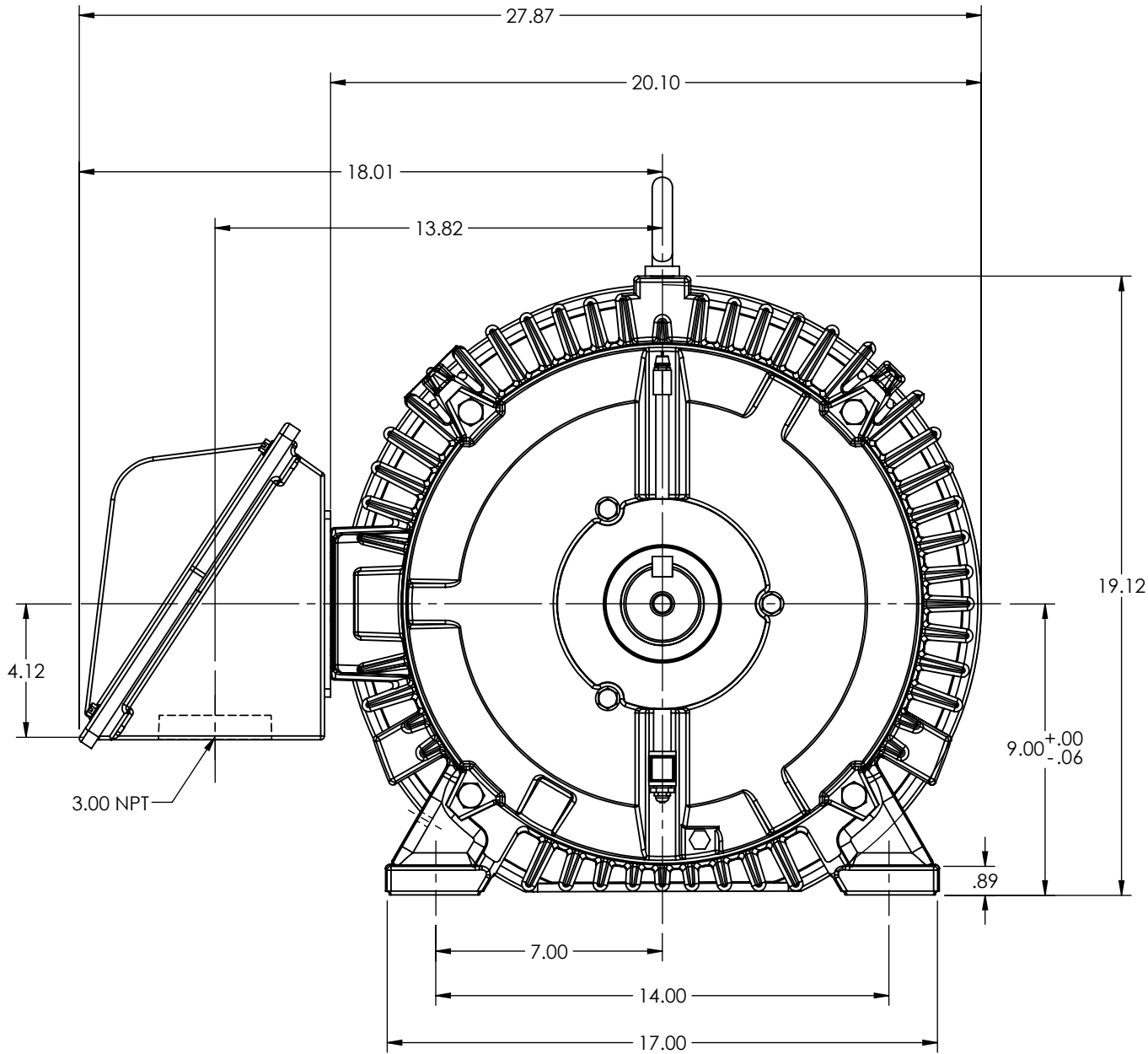
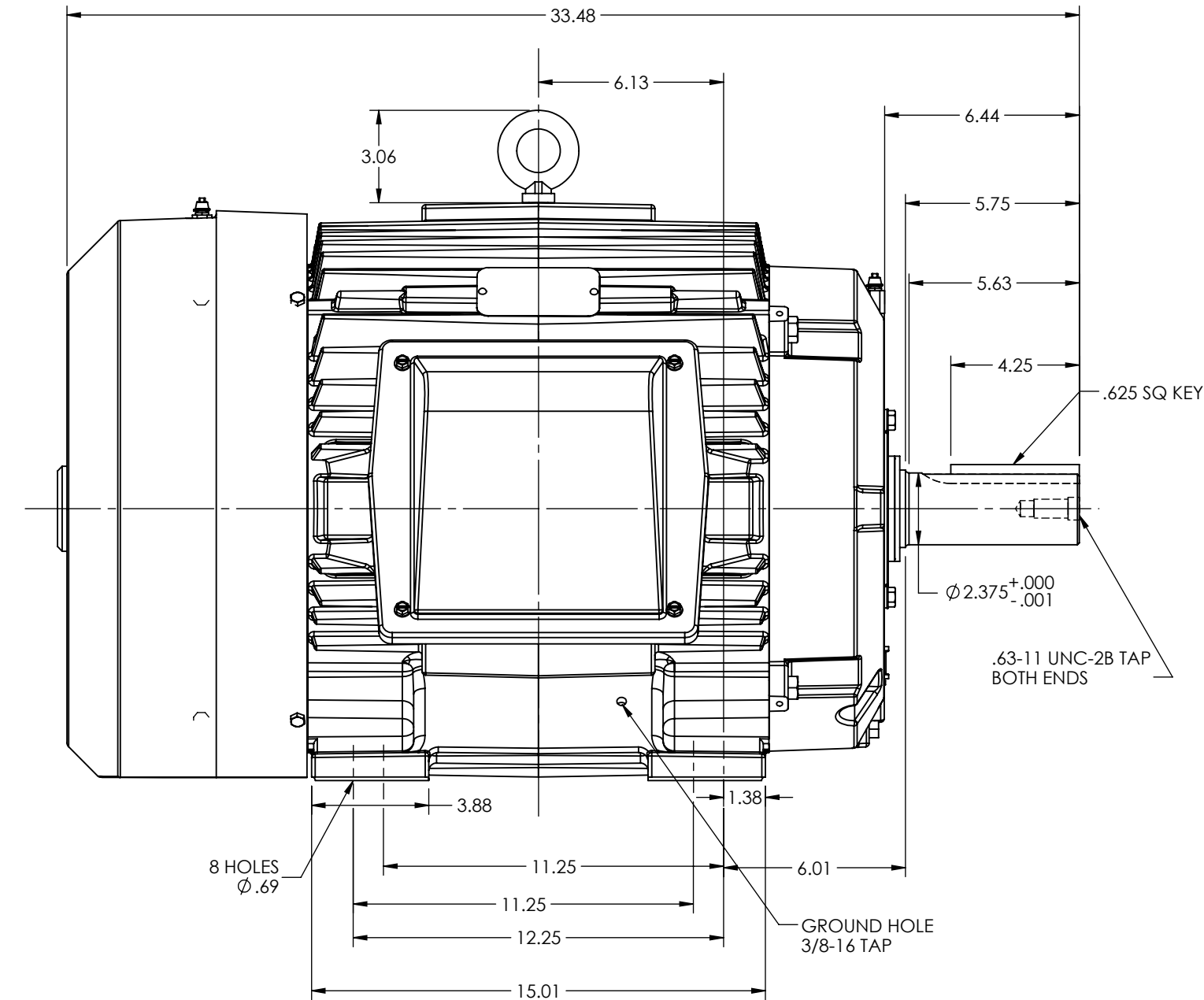
DUTY MASTER ALTERNATING CURRENT MOTORS

SQUIRREL-CAGE INDUCTION
CAST IRON CONSTRUCTION

ENCLOSURE: TOTALLY ENCLOSED
MOUNTING: FOOT

FRAMES 364T-365T
661-XL WITH STANDARD CONDUIT BOX

COOLING: FAN COOLED



MAXIMUM PERMISSIBLE SHAFT RUNOUT FOR (BALL BEARING WHEN MEASURED AT END OF STD. SHAFT EXTENSION IS .0015 T.I.R.) FOR (FOR ROLLER BEARING CONSTRUCTION .002 T.I.R.)

WEIGHT (LBS): 364T = 865
365T = 890

MOTOR WEIGHTS MAY VARY BY 15% DEPENDING UPON RATING.

CUSTOMER IS RESPONSIBLE FOR DETERMINING THAT BALDOR'S PRODUCT WILL PERFORM SUITABLY IN THE INTENDED APPLICATION

REV. DESC: CHG PERMISSIBLE SHAFT RUN NOTE TO ADD ROLLER BRG			
REV: A	VERSION: 01	REVISED: 11:16:51 09/13/2022	TDR: 000001196993
MODEL NO. 617428-022			REF:
BY: RAGGDM			B

BALDOR

DIM SHEET-TEFC 364-5T,661-XL W/ STD C/BOX (617418-001)

617428-022

617428-022