

BALDOR • RELIANCE

Customer information packet

ECP63774TR-4

10HP, 1760RPM, 3PH, 60HZ, 215T, 0748M, TEFC, F1

Class - CLI GP A,B,C,D

Division - Division II

Specifications

Enclosure	TEFC
Frame	215T
Frame Material	Iron
Frequency	60.00 Hz
Haz Area Class and Group	CLI GP A,B,C,D
Haz Area Division	Division II
Motor Letter Type	Three Phase
Output @ Frequency	10.000 HP @ 60 HZ
Phase	3
Synchronous Speed @ Frequency	1800 RPM @ 60 HZ
Voltage @ Frequency	460.0 V @ 60 HZ
Agency Approvals	CSA EEV NEMA PREMIUM NEMA_PREMIUM UR CCSA US
Ambient Temperature	40 °C
Auxillary Box	No Auxillary Box
Auxillary Box Lead Termination	None
Base Indicator	Rigid
Bearing Grease Type	Mobilith SHC220, HC9455
Blower	None
Constant Torque Speed Range	1.3
Current @ Voltage	12.500 A @ 460.0 V
Design Code	B
Drip Cover	No Drip Cover
Duty Rating	CONT
Efficiency @ 100% Load	91.7 %
Electrically Isolated Bearing	Not Electrically Isolated
Enclosure Modification	841
Feedback Device	NO FEEDBACK
Front Face Code	C-Face

Part detail

Revision	AE
Type	AC
Mech. spec.	07M686
Base	
Status	PRD/A
Elec. spec.	07WGX813
Layout	07LYM686
Eff. date	09-09-2024
CD Diagram	CD0006
Poles	04
Leads	3#14
Proprietary	False
Created date	08-22-2013

Front Shaft Indicator	None
Haz Area Temp Code	T3C
Heater Indicator	No Heater
High Voltage Full Load Amps	12.5 a
Insulation Class	F
Inverter Code	Inverter Duty
KVA Code	H
Lifting Lugs	Standard Lifting Lugs
Locked Bearing Indicator	Locked Bearing
Max Speed	2700 rpm
Motor Lead Exit	Ko Box
Motor Lead Quantity/Wire Size	3 @ 14 AWG
Motor Lead Termination	Flying Leads
Motor Standards	NEMA
Motor Type	0748M
Mounting Arrangement	F1
Number of Poles	4
Overall Length	19.49 IN
Power Factor	81
Product Family	CP S/P32-8 IEEE 841 Features
Pulley End Bearing Type	Roller
Pulley Face Code	Standard
Pulley Shaft Indicator	Standard
Rodent Screen	None
Service Factor	1.15
Shaft Diameter	1.376 IN
Shaft Extension Location	Pulley End
Shaft Ground Indicator	No Shaft Grounding
Shaft Rotation	Reversible
Shaft Slinger Indicator	Shaft Slinger
Speed	1765 rpm
Speed Code	Single Speed
Starting Method	Direct on line
Thermal Device - Bearing	None

Thermal Device - Winding	None
Vibration Sensor Indicator	No Vibration Sensor
Winding Thermal 1	None
Winding Thermal 2	None

Nameplate

NP4366									
CAT.NO.	ECP63774TR-4								
SPEC.	07M686X813G1								
HP	10 TE					IP	56		
VOLTS	460								
AMPS	12.5								
R.P.M.	1765								
FRAME	215T		HZ	60		PH	3		
SER.F.	1.15	CODE	H	DES.	B	CLASS	F		
RATING	40C AMB-CONT								
SN									
DE	NU307		ODE	6307					
NEMA NOM. EFF.	91.7		P.F.	81					
GUAR. MIN. EFF.	90.2	CC	010A						
T. CODE	T3C		TEMP=	160					

NP3187

SPEC.	07M686X813G1		
D.E. BRG.	35RU03X30X		
O.D.E. BRG.	35BC03X30X		
GREASE	MOBIL SHC 222		
WEIGHT	231	# OF ROTOR BARS	28 # OF STATOR SLOTS 36
RPM MAX	2700	MAX. KVAR	1.5
BLANK			
INV.TYPE	PWM		
T=	160		
C HP FR	60	C HP TO	90
CT HZ FROM	1.3	CT HZ TO	60
VT HZ FROM	0-	VT HZ TO	60
HTR-VOLTS	N/A	HTR-AMPS	N/A
WATTS		MAX. SPACE HEATER TEMP.	N/A

AC Induction Motor Performance Data

Record # 92588

Typical performance - not guaranteed values

Winding: 07WGX813-R059		Type: 0748M	Enclosure: TEFC	
Nameplate Data		460 V, 60 Hz: Single Voltage Motor		
Rated Output (HP)	10	Full Load Torque	29.85 LB-FT	
Volts	460	Start Configuration	direct on line	
Full Load Amps	12.3	Breakdown Torque	80.65 LB-FT	
R.P.M.	1765	Pull-up Torque	40.2 LB-FT	
Hz	60 Phase	3	Locked-rotor Torque	52.6 LB-FT
NEMA Design Code	B KVA Code	H	Starting Current	81 A
Service Factor (S.F.)		1.15	No-load Current	4.45 A
NEMA Nom. Eff.	91.7 Power Factor	81	Line-line Res. @ 25°C	1.08 Ω
Rating - Duty		40C AMB-CONT	Temp. Rise @ Rated Load	65°C
S.F. Amps			Temp. Rise @ S.F. Load	81°C
			Locked-rotor Power Factor	35.1
			Rotor inertia	1.18 lb-ft ²

Load Characteristics 460 V, 60 Hz, 10 HP

% of Rated Load	25	50	75	100	125	150	S.F.
Power Factor	51	72	80	83	85	85	84
Efficiency	87.3	90.8	91.7	91.7	90.2	88.5	91
Speed	1791	1782	1774	1763	1751	1737	1756
Line amperes	5.29	7.18	9.54	12.29	15.36	18.81	14

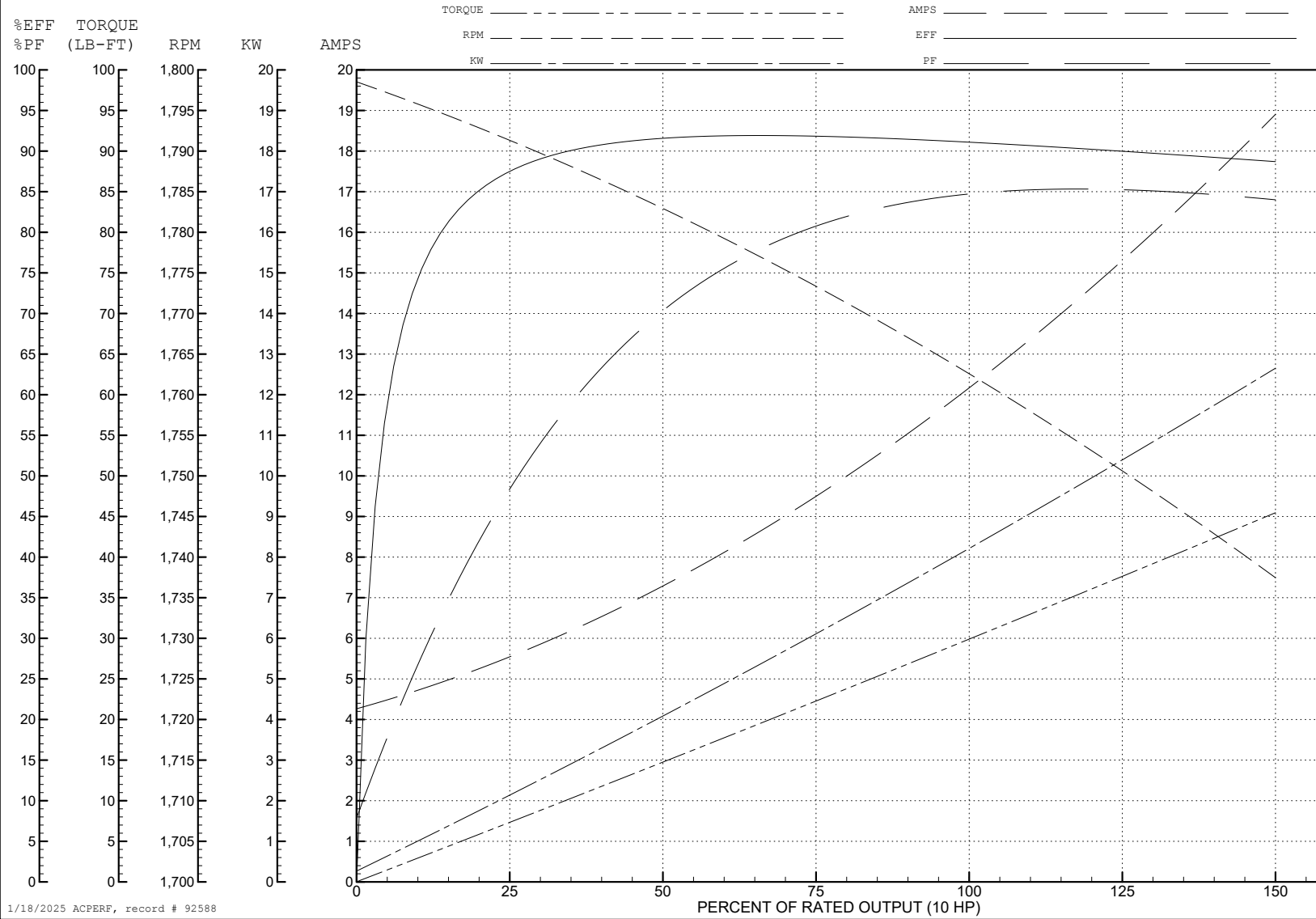
ABB Motors and Mechanical Inc.

WINDING # 07WGX813

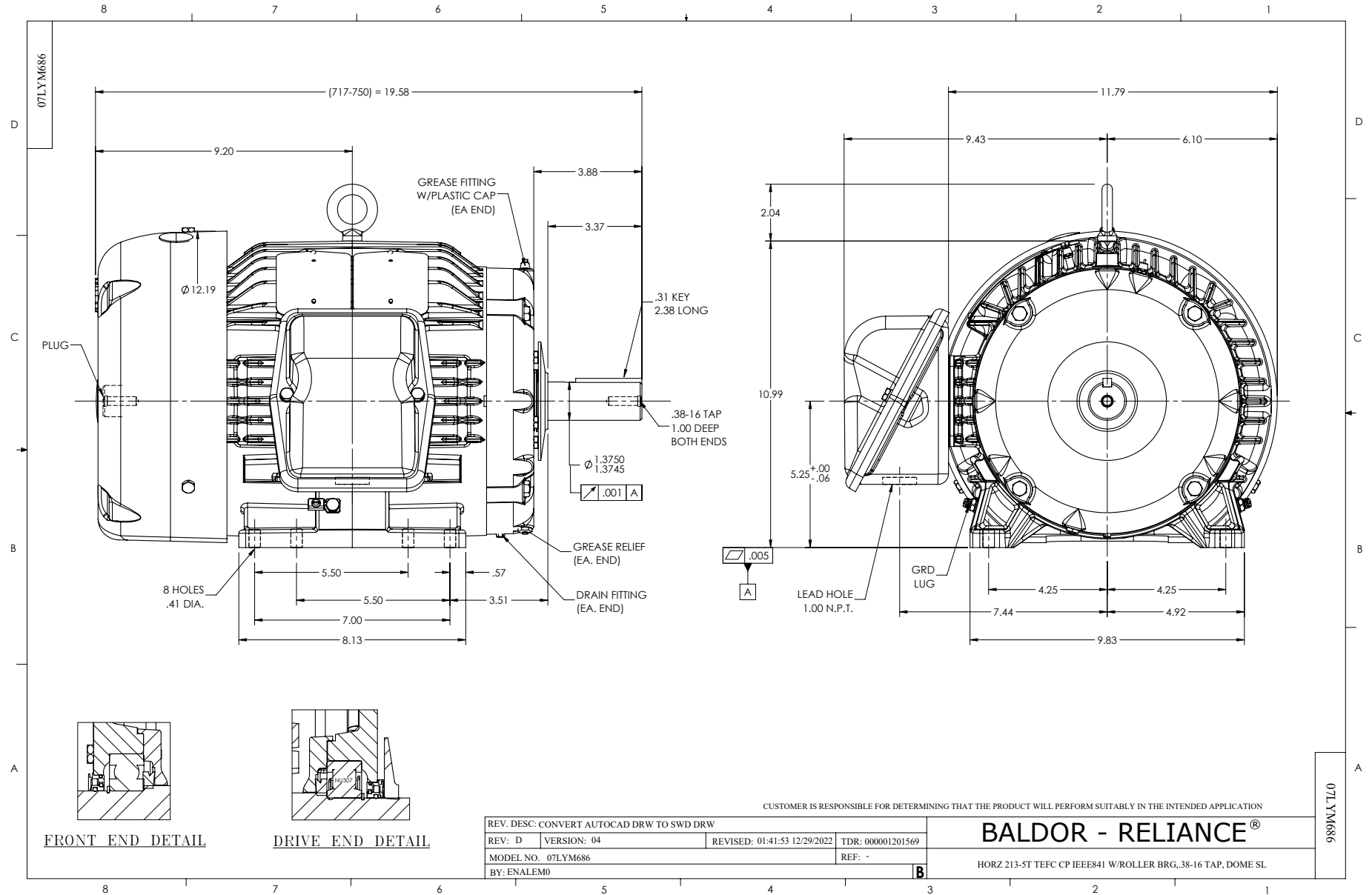
Typical performance - not guaranteed values.

10 HP 3 PH 60 HZ 1765 RPM 460 V 0748M

TORQUES (LB-FT): PO=80.65 PU=40.2 LR=52.6 LRA=81



1/18/2025 ACPERF, record # 92588



CD0006



NOTES:

1. THREE LEAD MOTOR MAY BE EITHER WYE CONNECTED OR DELTA CONNECTED.
2. INTERCHANGE ANY TWO LINE LEADS TO REVERSE ROTATION.
3. OPTIONAL THERMOSTATS ARE PROVIDED WHEN SPECIFIED.
4. ACTUAL NUMBER OF INTERNAL PARALLEL CIRCUITS MAY VARY.
5. LEAD COLORS ARE OPTIONAL. LEADS MUST BE NUMBERED AS SHOWN.

CD0006

REV. DESC: ADD CLASS CONN00000007		
REV. LTR: E	VERSION: 01	TDR: 000001099922
FILE: \AAA\00005\141	REVISED: 10:24:49 02/19/2019	BY: ENBRIRO
MTL: -	© □	

BALDOR - RELIANCE®

3PH, SV, 3 LEADS, WYE OR DELTA CONNECTED

SH 1 of 1