



---

# Customer information packet

## ECP63665T-4

5HP, 1750RPM, 3PH, 60HZ, 184T, 0641M, TEFC, F1

Class - CLI GP A,B,C,D

Division - Division II

## Specifications

Enclosure	TEFC
Frame	184T
Frame Material	Iron
Frequency	60.00 Hz
Motor Letter Type	Three Phase
Output @ Frequency	5.000 HP @ 60 HZ
Phase	3
Synchronous Speed @ Frequency	1800 RPM @ 60 HZ
Voltage @ Frequency	460.0 V @ 60 HZ
XP Class and Group	CLI GP A,B,C,D
XP Division	Division II
Agency Approvals	CSA EEV NEMA PREMIUM NEMA_PREMIUM UR CCSA US
Ambient Temperature	40 °C
Auxillary Box	No Auxillary Box
Auxillary Box Lead Termination	None
Base Indicator	Rigid
Bearing Grease Type	Polyrex EM (-20F +300F)
Blower	None
Constant Torque Speed Range	1.7
Current @ Voltage	6.450 A @ 460.0 V
Design Code	B
Drip Cover	No Drip Cover
Duty Rating	CONT
Efficiency @ 100% Load	89.5 %
Electrically Isolated Bearing	Not Electrically Isolated
Enclosure Modification	841
Feedback Device	NO FEEDBACK
Front Face Code	Standard

## Part detail

Revision	W
Type	AC
Mech. spec.	06K171
Base	
Status	PRD/A
Elec. spec.	06WGX203
Layout	06LYK171
Eff. date	12-11-2023
CD Diagram	CD0006
Poles	04
Leads	3#16
Proprietary	False
Created date	08-21-2013

Front Shaft Indicator	None
Heater Indicator	No Heater
High Voltage Full Load Amps	6.5 a
Insulation Class	F
Inverter Code	Inverter Duty
KVA Code	J
Lifting Lugs	Standard Lifting Lugs
Locked Bearing Indicator	Locked Bearing
Max Speed	2700 rpm
Motor Lead Exit	Ko Box
Motor Lead Quantity/Wire Size	3 @ 16 AWG
Motor Lead Termination	Flying Leads
Motor Standards	NEMA
Motor Type	0642M
Mounting Arrangement	F1
Number of Poles	4
Overall Length	15.93 IN
Power Factor	81
Product Family	Chem Process S/P 32-8 IEEE 841
Pulley End Bearing Type	Ball
Pulley Face Code	Standard
Pulley Shaft Indicator	Standard
Rodent Screen	None
RoHS Status	ROHS COMPLIANT
Service Factor	1.15
Shaft Diameter	1.125 IN
Shaft Extension Location	Pulley End
Shaft Ground Indicator	No Shaft Grounding
Shaft Rotation	Reversible
Shaft Slinger Indicator	Shaft Slinger
Speed	1750 rpm
Speed Code	Single Speed
Starting Method	Direct on line
Thermal Device - Bearing	None

<b>Thermal Device - Winding</b>	None
<b>Vibration Sensor Indicator</b>	No Vibration Sensor
<b>Winding Thermal 1</b>	None
<b>Winding Thermal 2</b>	None
<b>XP Temp Code</b>	T3C

**Nameplate**

<b>NP4366</b>									
<b>CAT.NO.</b>	ECP63665T-4								
<b>SPEC.</b>	06K171X203								
<b>HP</b>	5 TE			<b>IP</b>	56				
<b>VOLTS</b>	460								
<b>AMPS</b>	6.45								
<b>R.P.M.</b>	1750								
<b>FRAME</b>	184T	<b>HZ</b>	60	<b>PH</b>	3				
<b>SER.F.</b>	1.15	<b>CODE</b>	J	<b>DES.</b>	B	<b>CLASS</b>	F		
<b>RATING</b>	40C AMB-CONT								
<b>SN</b>									
<b>DE</b>	6206	<b>ODE</b>	6206						
<b>NEMA NOM. EFF.</b>	89.5	<b>P.F.</b>	81						
<b>GUAR. MIN. EFF.</b>	87.5	<b>CC</b>	010A						
<b>T. CODE</b>	T3C	<b>TEMP=</b>	160						

**NP3187**

<b>SPEC.</b>	06K171X203			
<b>D.E. BRG.</b>	30BC02X30X			
<b>O.D.E. BRG.</b>	30BC02X30X			
<b>GREASE</b>	POLYREX EM			
<b>WEIGHT</b>	128	<b># OF ROTOR BARS</b>	28	<b># OF STATOR SLOTS</b> 36
<b>RPM MAX</b>	2700	<b>MAX. KVAR</b>	1	
<b>BLANK</b>				
<b>INV.TYPE</b>	PWM			
<b>T=</b>	160			
<b>C HP FR</b>	60	<b>C HP TO</b>	90	
<b>CT HZ FROM</b>	1.7	<b>CT HZ TO</b>	60	
<b>VT HZ FROM</b>	-0	<b>VT HZ TO</b>	60	
<b>HTR-VOLTS</b>	N/A	<b>HTR-AMPS</b>	N/A	
<b>WATTS</b>	N/A	<b>MAX. SPACE HEATER TEMP.</b>	N/A	

**AC Induction Motor Performance Data**

Record # 92406

Typical performance - not guaranteed values

Winding: 06WGX203-R061		Type: 0642M	Enclosure: TEFC	
<b>Nameplate Data</b>			<b>460 V, 60 Hz: Single Voltage Motor</b>	
Rated Output (HP)	5	Full Load Torque	15 LB-FT	
Volts	460	Start Configuration	direct on line	
Full Load Amps	6.6	Breakdown Torque	53.9 LB-FT	
R.P.M.	1750	Pull-up Torque	22.4 LB-FT	
Hz	60 Phase	3	Locked-rotor Torque	31.8 LB-FT
NEMA Design Code	B KVA Code	J	Starting Current	46 A
Service Factor (S.F.)		1.15	No-load Current	3.02 A
NEMA Nom. Eff.	89.5 Power Factor	79	Line-line Res. @ 25°C	2.63 Ω
Rating - Duty		40C AMB-CONT	Temp. Rise @ Rated Load	53°C
S.F. Amps			Temp. Rise @ S.F. Load	65°C
			Locked-rotor Power Factor	40.5
			Rotor inertia	0.391 lb-ft <sup>2</sup>

**Load Characteristics 460 V, 60 Hz, 5 HP**

% of Rated Load	25	50	75	100	125	150	S.F.
Power Factor	41	63	75	81	84	85	81
Efficiency	85.2	89.8	90.4	89.5	88.4	86.9	88.7
Speed	1789	1777	1765	1752	1737	1721	1739
Line amperes	3.35	4.14	5.21	6.45	7.91	9.47	7.52

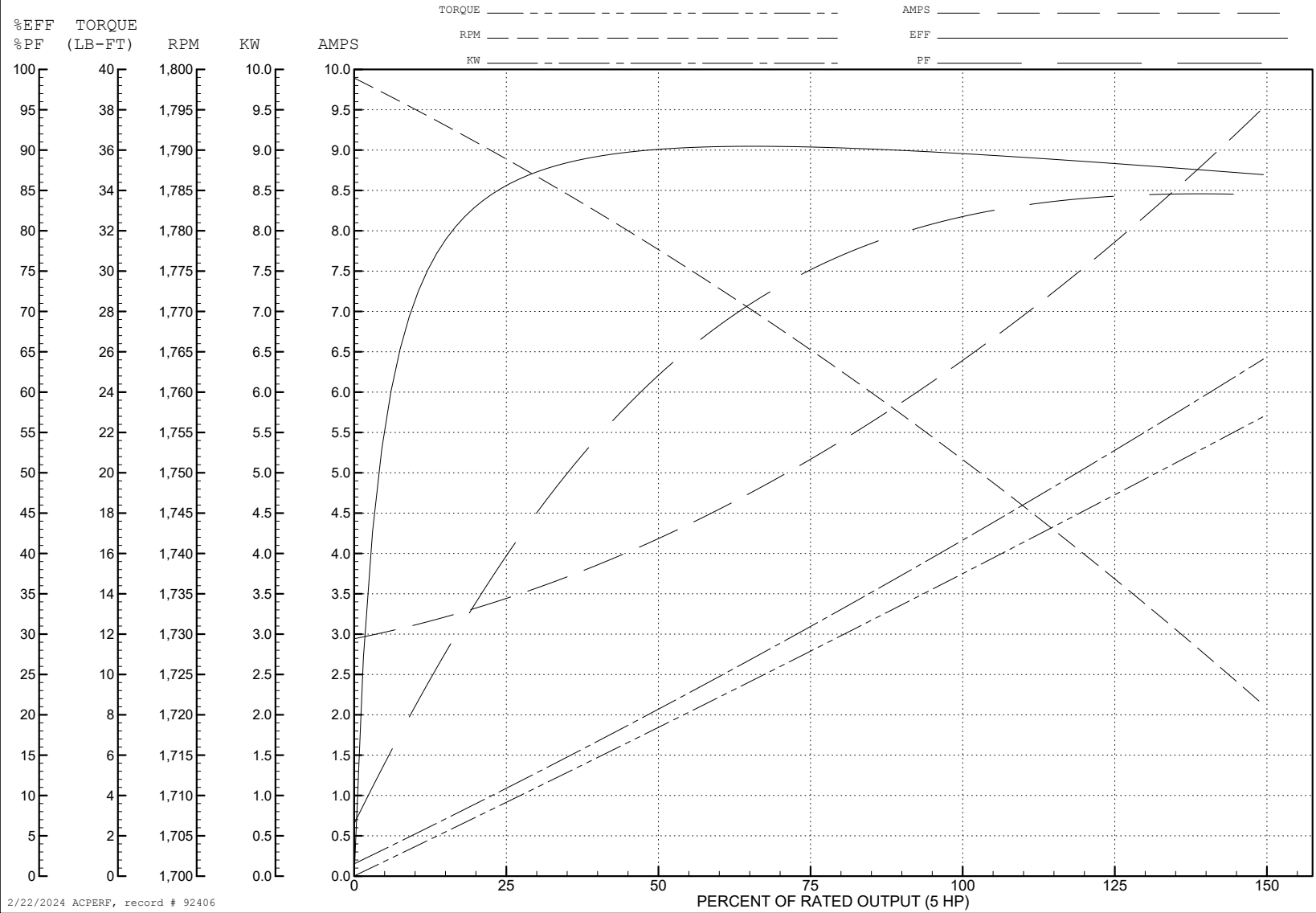
ABB Motors and Mechanical Inc.

WINDING # 06WGX203

5 HP 3 PH 60 HZ 1750 RPM 460 V 0642M

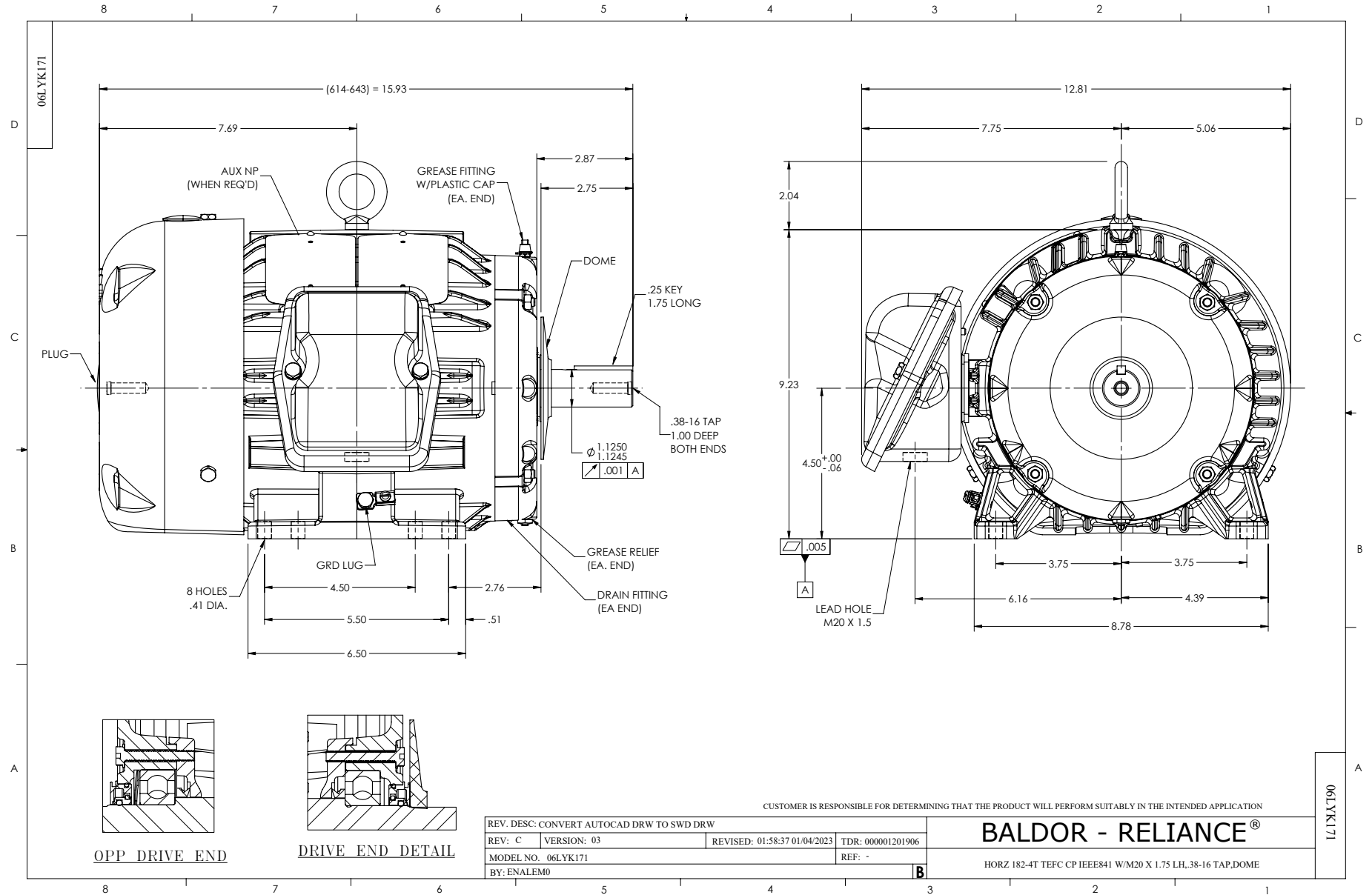
Typical performance - not guaranteed values.

TORQUES (LB-FT): PO=53.9 PU=22.4 LR=31.8 LRA=46



2/22/2024 ACPERF, record # 92406





CD0006



NOTES:

1. THREE LEAD MOTOR MAY BE EITHER WYE CONNECTED OR DELTA CONNECTED.
2. INTERCHANGE ANY TWO LINE LEADS TO REVERSE ROTATION.
3. OPTIONAL THERMOSTATS ARE PROVIDED WHEN SPECIFIED.
4. ACTUAL NUMBER OF INTERNAL PARALLEL CIRCUITS MAY VARY.
5. LEAD COLORS ARE OPTIONAL. LEADS MUST BE NUMBERED AS SHOWN.

CD0006

REV. DESC: ADD CLASS CONN00000007		
REV. LTR: E	VERSION: 01	TDR: 000001099922
FILE: \AAA\00005\141	REVISED: 10:24:49 02/19/2019	BY: ENBRIRO
MTL: -	© □	

**BALDOR - RELIANCE®**

3PH, SV, 3 LEADS, WYE OR DELTA CONNECTED

SH 1 of 1