

# ABB BALDOR RELIANCE III

---

## Customer information packet

ECP62333TR-4

15HP, 1760RPM, 3PH, 60HZ, 254T, 0944M, TEFC, F1

Class - CLI GP A,B,C,D

Division - Division II

**Specifications**

<b>Enclosure</b>	TEFC
<b>Frame</b>	254T
<b>Frame Material</b>	Iron
<b>Frequency</b>	60.00 Hz
<b>Haz Area Class and Group</b>	CLI GP A,B,C,D
<b>Haz Area Division</b>	Division II
<b>Motor Letter Type</b>	Three Phase
<b>Output @ Frequency</b>	15.000 HP @ 60 HZ
<b>Phase</b>	3
<b>Synchronous Speed @ Frequency</b>	1800 RPM @ 60 HZ
<b>Voltage @ Frequency</b>	460.0 V @ 60 HZ
<b>Agency Approvals</b>	CSA EEV NEMA PREMIUM NEMA_PREMIUM UR CCSA US
<b>Ambient Temperature</b>	40 °C
<b>Auxiliary Box</b>	NO AUXILLARY BOX
<b>Auxiliary Box Lead Termination</b>	None
<b>Base Indicator</b>	Rigid
<b>Bearing Grease Type</b>	Mobilith SHC220, HC9455
<b>Blower</b>	None
<b>Constant Torque Speed Range</b>	1.3
<b>Current @ Voltage</b>	17.600 A @ 460.0 V
<b>Design Code</b>	B
<b>Drip Cover</b>	No Drip Cover
<b>Duty Rating</b>	CONT
<b>Efficiency @ 100% Load</b>	92.4 %
<b>Electrically Isolated Bearing</b>	Not Electrically Isolated
<b>Enclosure Modification</b>	Severe Duty Features
<b>Feedback Device</b>	NO FEEDBACK
<b>Front Face Code</b>	Standard

**Part Detail**

<b>Revision</b>	AL
<b>Type</b>	AC
<b>Mech. spec.</b>	09K884
<b>Base</b>	
<b>Status</b>	PRD/A
<b>Elec. spec.</b>	09WGZ997
<b>Layout</b>	09LYK884
<b>Eff. date</b>	09-09-2024
<b>CD Diagram</b>	CD0006
<b>Poles</b>	04
<b>Leads</b>	3#12
<b>Proprietary</b>	False
<b>Created date</b>	09-17-2013

<b>Front Shaft Indicator</b>	None
<b>Haz Area Temp Code</b>	T3C
<b>Heater Indicator</b>	No Heater
<b>High Voltage Full Load Amps</b>	17.6 a
<b>Insulation Class</b>	F
<b>Inverter Code</b>	Inverter Duty
<b>KVA Code</b>	G
<b>Lifting Lugs</b>	Standard Lifting Lugs
<b>Locked Bearing Indicator</b>	Locked Bearing
<b>Max Speed</b>	2700 rpm
<b>Motor Lead Exit</b>	Ko Box
<b>Motor Lead Quantity/Wire Size</b>	3 @ 12 AWG
<b>Motor Lead Termination</b>	Ring Terminals
<b>Motor Standards</b>	NEMA
<b>Motor Type</b>	0944M
<b>Mounting Arrangement</b>	F1
<b>Number of Poles</b>	4
<b>Overall Length</b>	24.86 IN
<b>Power Factor</b>	85
<b>Product Family</b>	Chem Process S/P 32-8 IEEE 841
<b>Pulley End Bearing Type</b>	Ball
<b>Pulley Face Code</b>	Standard
<b>Pulley Shaft Indicator</b>	Tapped & Key
<b>Rodent Screen</b>	None
<b>Service Factor</b>	1.15
<b>Shaft Diameter</b>	1.625 IN
<b>Shaft Extension Location</b>	Pulley End
<b>Shaft Ground Indicator</b>	No Shaft Grounding
<b>Shaft Rotation</b>	Reversible
<b>Shaft Slinger Indicator</b>	No Slinger
<b>Speed</b>	1760 rpm
<b>Speed Code</b>	Single Speed
<b>Starting Method</b>	Direct on line
<b>Thermal Device - Bearing</b>	None

<b>Thermal Device - Winding</b>	<b>None</b>
<b>Vibration Sensor Indicator</b>	<b>No Vibration Sensor</b>
<b>Winding Thermal 1</b>	<b>None</b>
<b>Winding Thermal 2</b>	<b>None</b>

**Nameplate**

**NP4367**

<b>CAT.NO.</b>	ECP62333TR-4	<b>CUST. P/N</b>		<b>ENCL</b>	TEFC
<b>SPEC.</b>	09K884Z997	<b>CC</b>	010A	<b>FRAME</b>	254T
<b>HP</b>	15	<b>CLASS</b>	F	<b>HZ</b>	60
<b>R.P.M.</b>	1760	<b>MAX. R.P.M.</b>	2700	<b>PH.</b>	3
<b>VOLTS</b>	460	<b>CODE</b>	G	<b>ABMA ODE BRG</b>	45BC03X30X
<b>AMPS</b>	17.6	<b>MOTOR WT.</b>	324	<b>LUBRICATION</b>	MOBIL SHC 222
<b>RATING</b>	40C AMB-CONT	<b>MAX. KVAR</b>	3.5	<b>BLANK</b>	AIR COOLED HEAT
<b>NEMA NOM. EFF.</b>	92.4	<b># OF ROTOR BARS</b>	40	<b>SER.F.</b>	1.15
<b>GUAR.MIN.EFF</b>	91	<b># OF STATOR SLOTS</b>	48	<b>P.F.</b>	85
<b>TEMP CODE</b>	T3C	<b>INVERTER TEMP CODE:TEMP=</b>		180	
<b>TEMP =</b>	160	<b>CHP</b>	60	<b>TO</b>	90
<b>CT</b>	1.3	<b>TO</b>	60		
<b>VOLTS</b>		<b>AMPS</b>		<b>WATTS</b>	
				<b>MAX. SPACE HEATER TEMP.</b>	
				<b>VT</b>	O TO 60

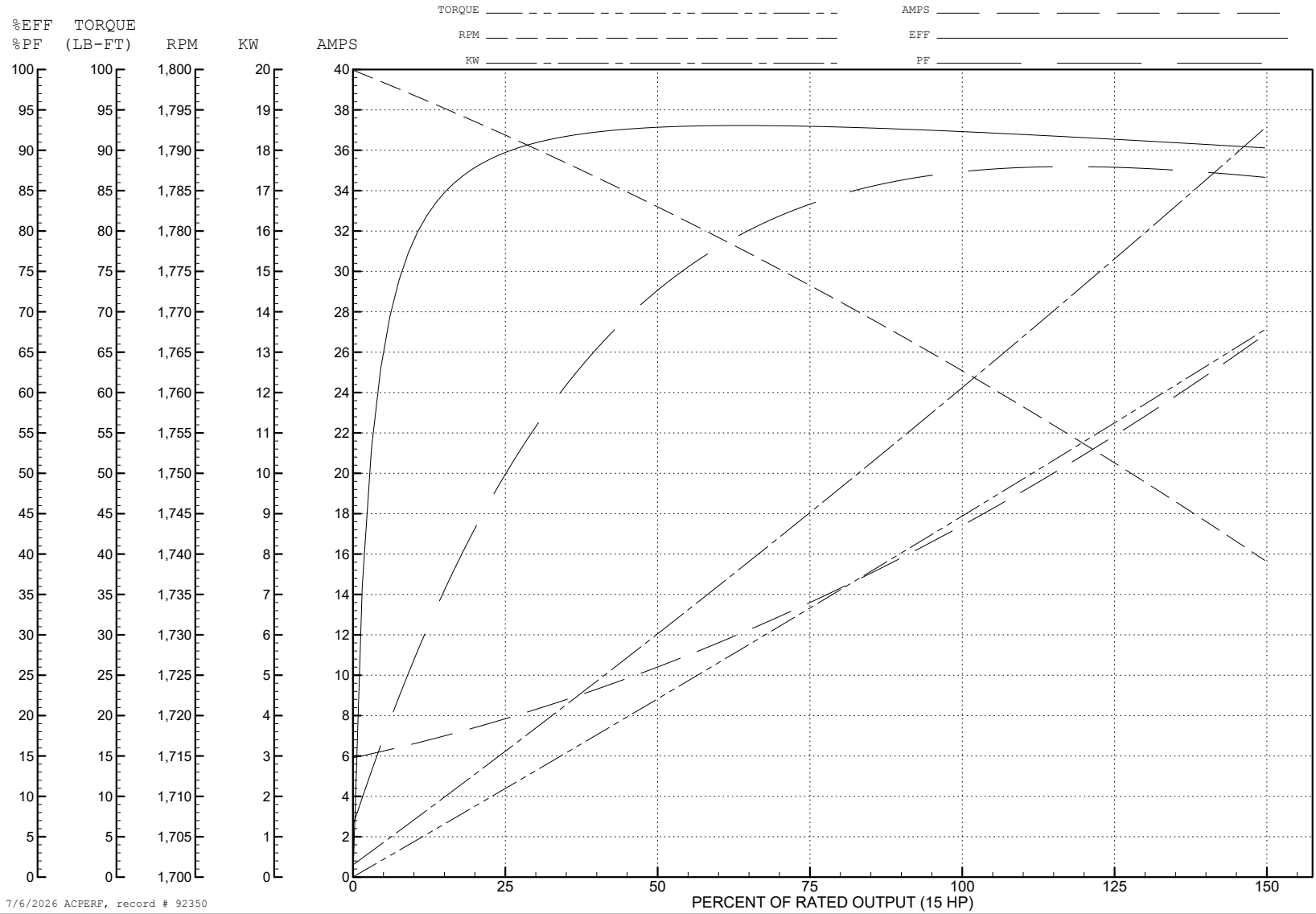
ABB Motors and Mechanical Inc.

WINDING # 09WGZ997

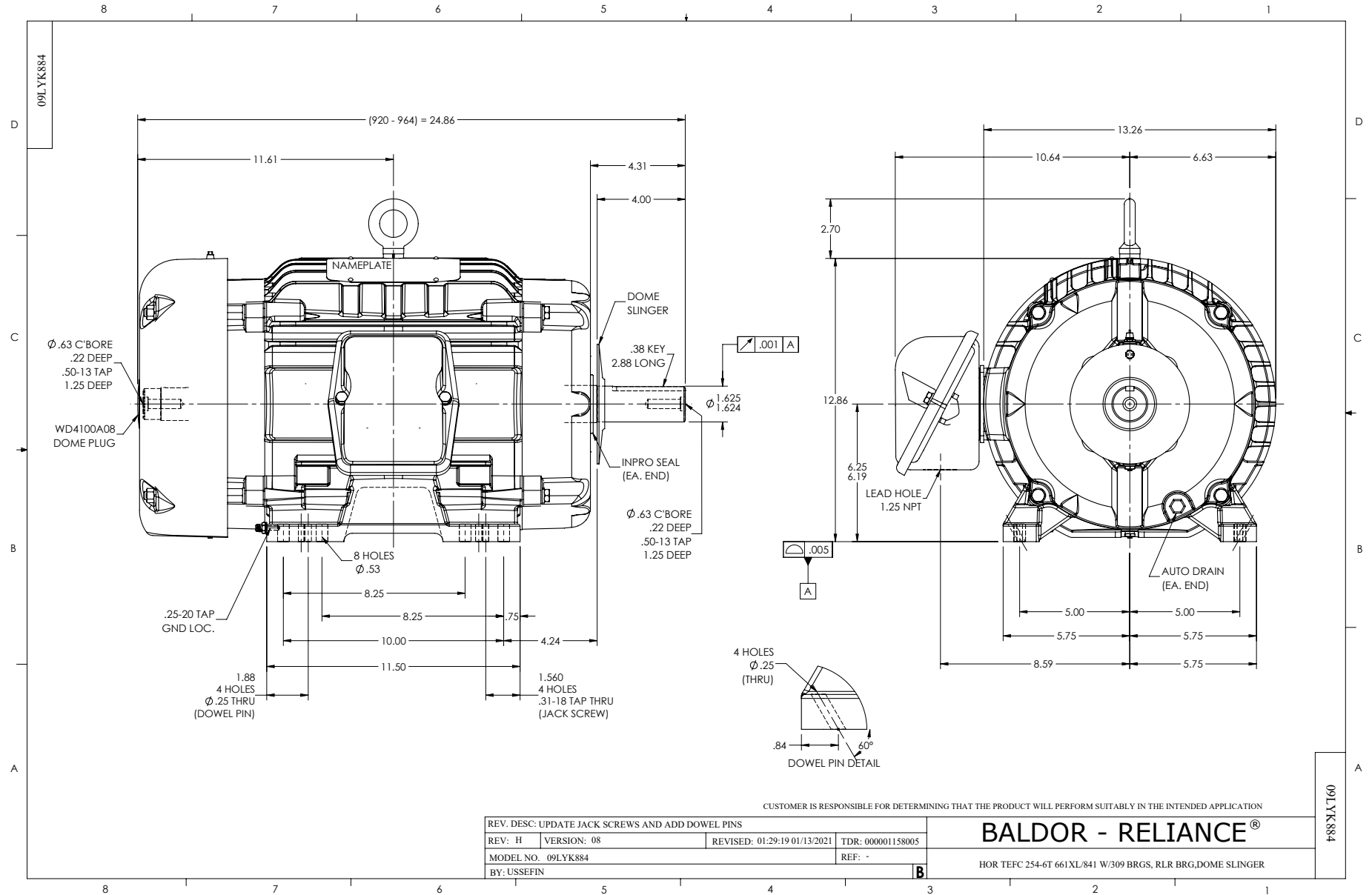
Typical performance - not guaranteed values.

15 HP 3 PH 60 HZ 1760 RPM 460 V 0944M

TORQUES (LB-FT): PO=163 PU=53.3 LR=73.2 LRA=116



7/6/2026 ACPERF, record # 92350



CD0006



NOTES:

1. THREE LEAD MOTOR MAY BE EITHER WYE CONNECTED OR DELTA CONNECTED.
2. INTERCHANGE ANY TWO LINE LEADS TO REVERSE ROTATION.
3. OPTIONAL THERMOSTATS ARE PROVIDED WHEN SPECIFIED.
4. ACTUAL NUMBER OF INTERNAL PARALLEL CIRCUITS MAY VARY.
5. LEAD COLORS ARE OPTIONAL. LEADS MUST BE NUMBERED AS SHOWN.

CD0006

REV. DESC: ADD CLASS CONN00000007		
REV. LTR: E	VERSION: 01	TDR: 000001099922
FILE: \AAA\00005\141	REVISED: 10:24:49 02/19/2019	BY: ENBRIRO
MTL: -		© □

**BALDOR - RELIANCE®**

3PH, SV, 3 LEADS, WYE OR DELTA CONNECTED

SH 1 of 1