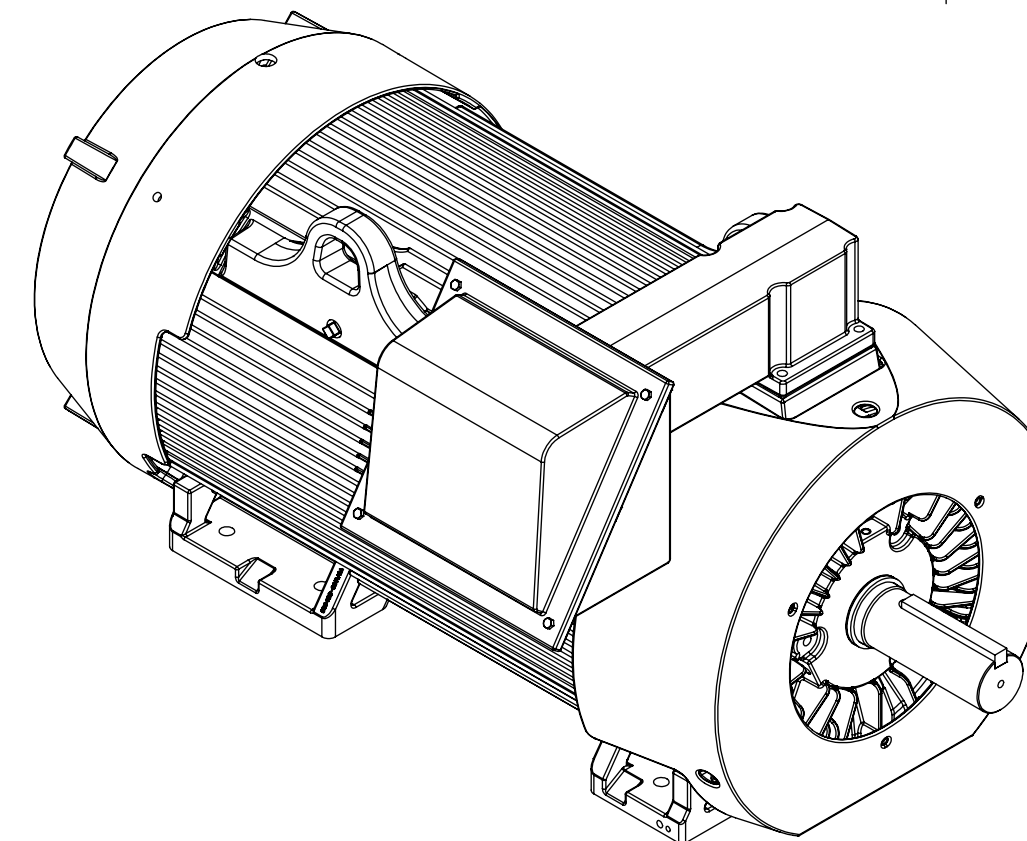
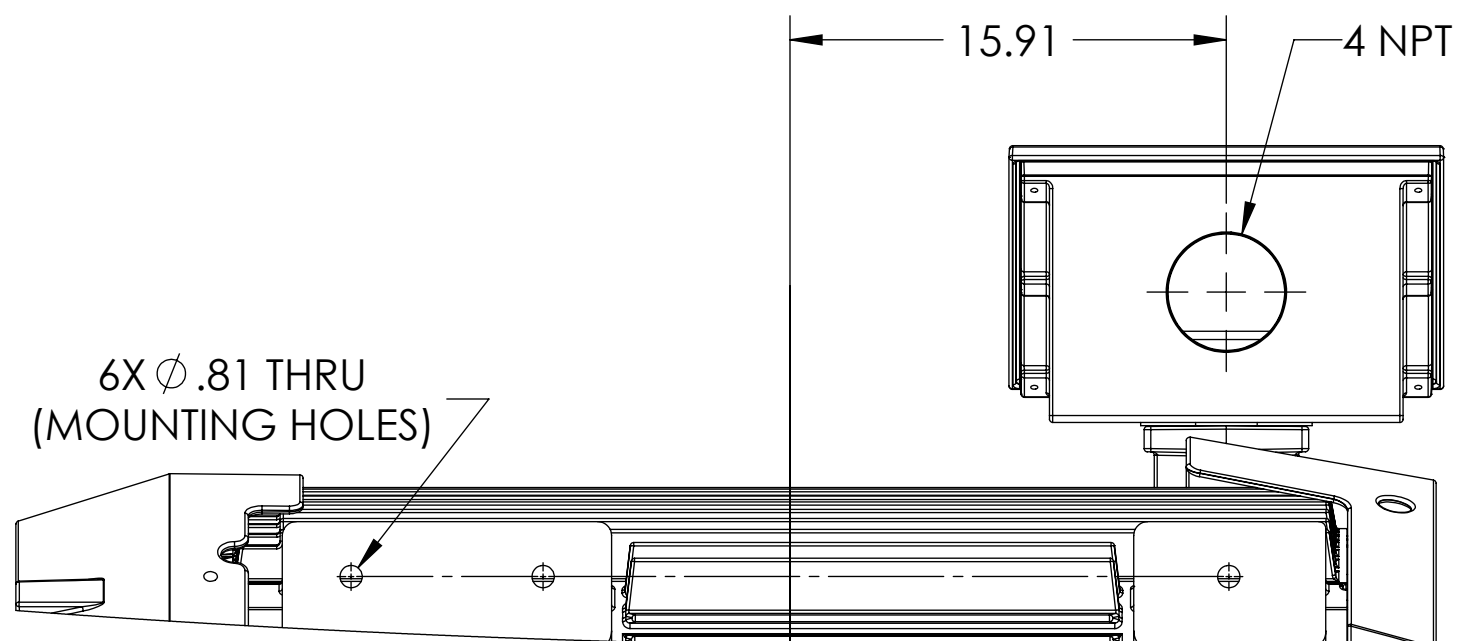
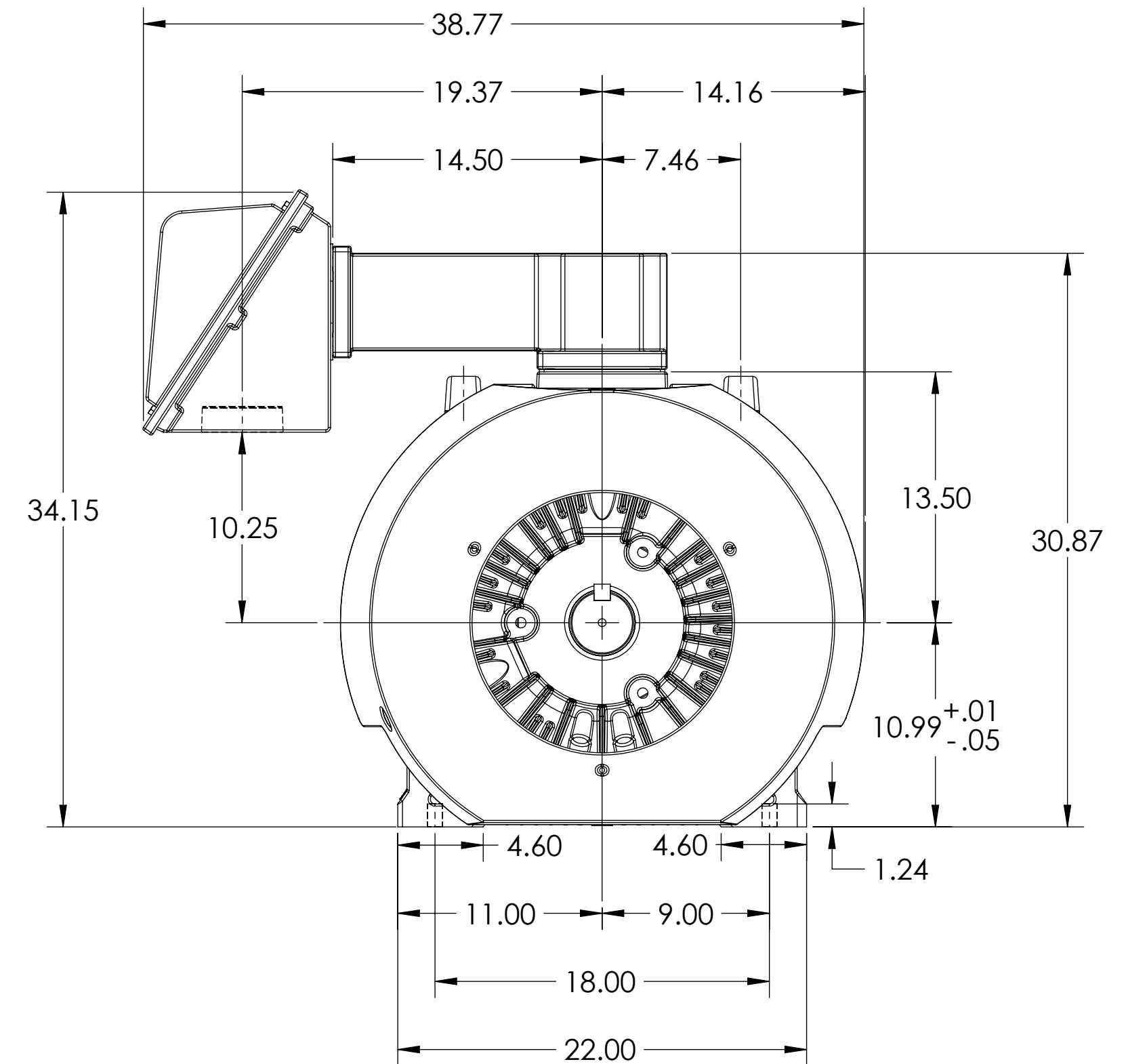
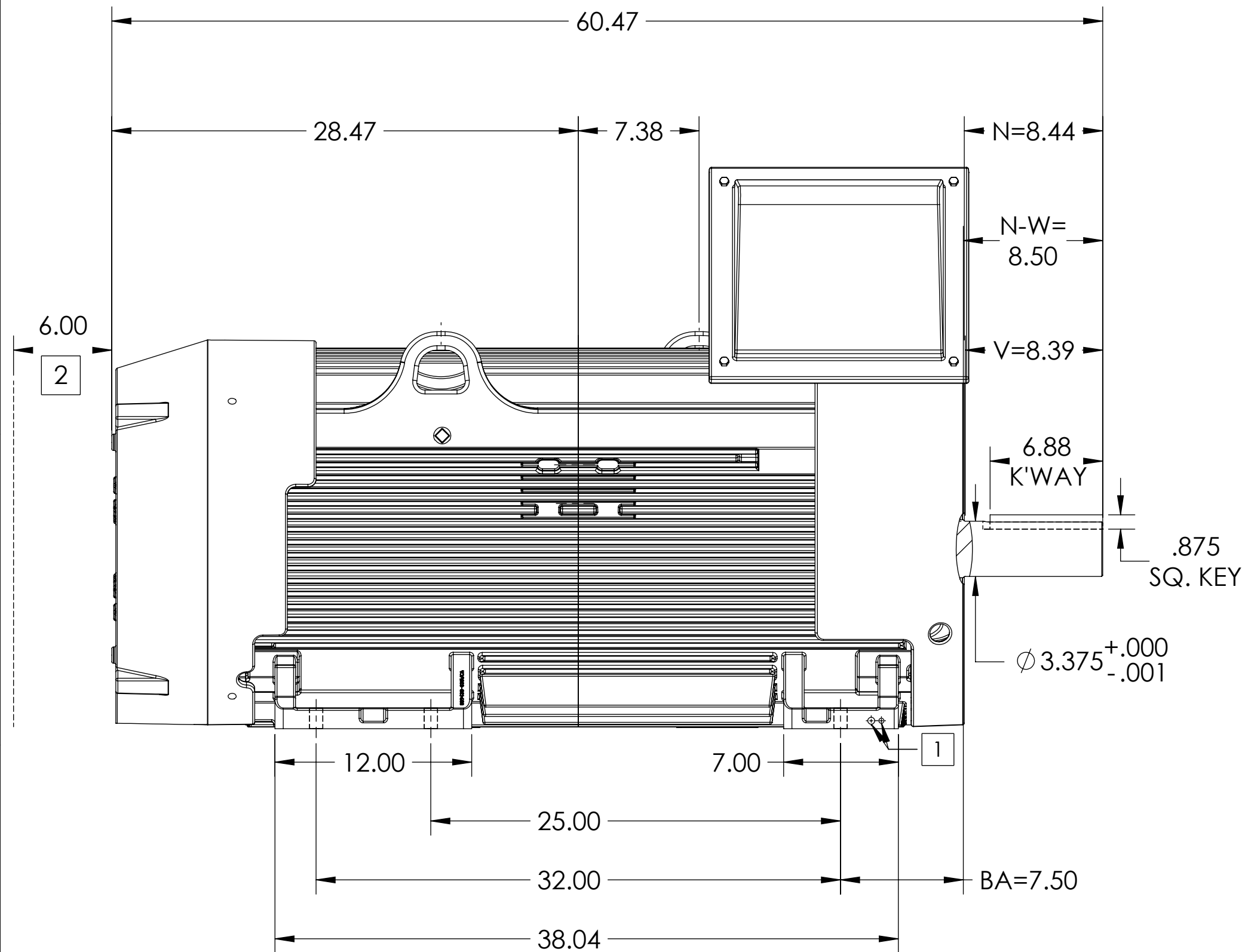


ENCLOSURE: TOTALLY ENCLOSED

MOUNTING: FOOT, F-1

## GL449T/G449T FRAME MOUNTING HOLES

COOLING: FAN COOLED



- 1 GROUND HOLES QTY (1) 1/2-13 TAP; QTY (1) 3/8-16 TAP.
- 2 OBSTRUCTION MUST NOT ENCROACH ON AIR INLET.

IF MOUNTING CLEARANCE DETAILS ARE REQUIRED, CONSULT FACTORY.  
MAX PERMISSIBLE SHAFT RUNOUT WHEN MEASURED AT END OF STANDARD SHAFT EXTENSION IS .003" T.I.R.

DIMENSIONS ARE IN INCHES; SEE SHEET 2 FOR DIMENSIONS IN MILLIMETERS.  
WEIGHT (LBS): 3875, MOTOR WEIGHTS MAY VARY BY 15% DEPENDING ON RATING.  
CUSTOMER IS RESPONSIBLE FOR DETERMINING THAT MOTOR PERFORMANCE IS SUITABLE IN THE APPLICATION.

REV. DESC: NEW DRAWING			
REV: -	VERSION: 00	REVISED: 10:06:55 08/25/2017	TDR: 00000103875
MODEL NO. 617423-494			REF: -
BY: USJEDIL		Material: -	

# BALDOR

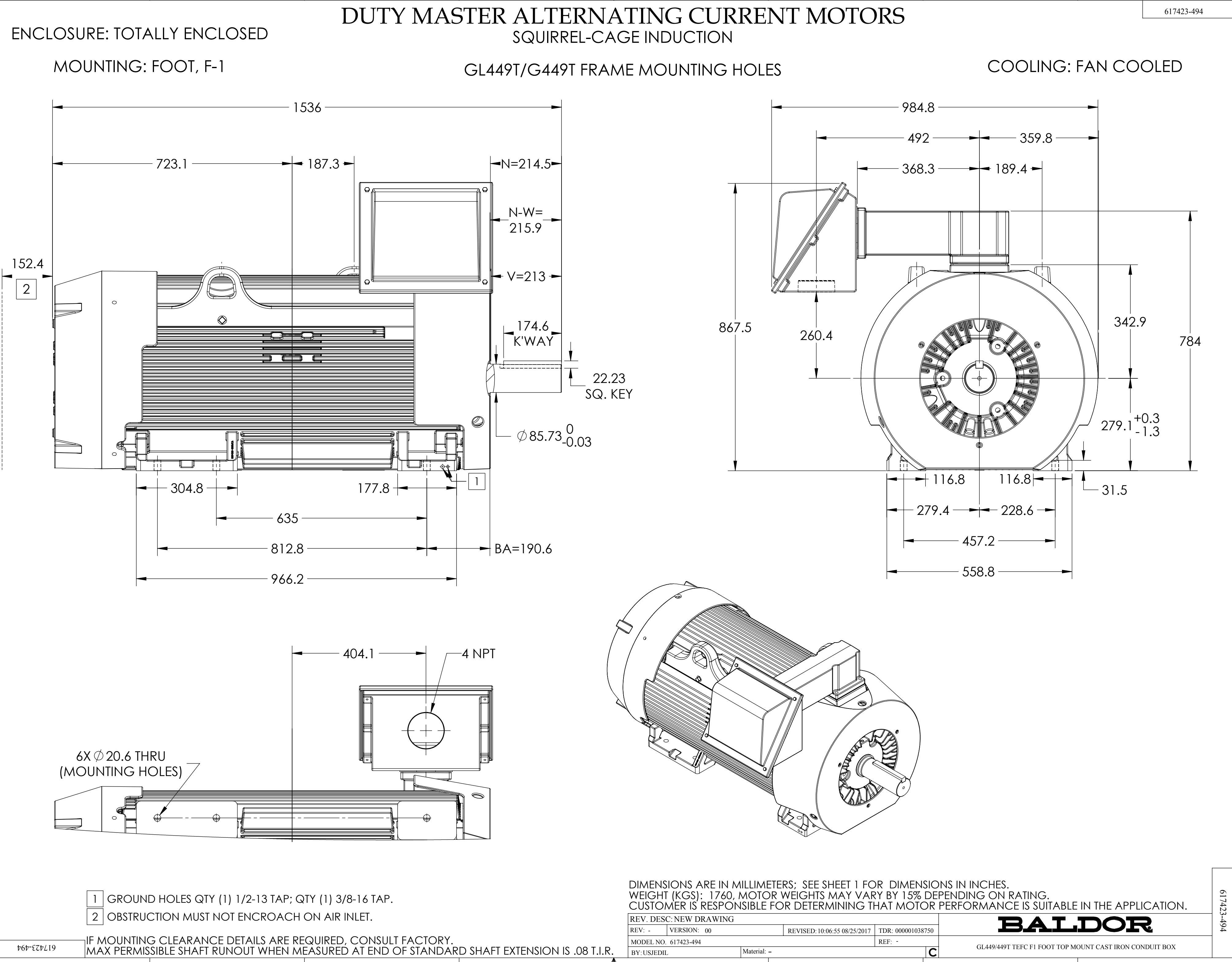
GL449/449T TEFC F1 FOOT TOP MOUNT CAST IRON CONDUIT BOX

ENCLOSURE: TOTALLY ENCLOSED

MOUNTING: FOOT, F-1

F  
E  
D  
C  
B  
A

617423-494



# DUTY MASTER ALTERNATING CURRENT MOTORS

## SQUIRREL-CAGE INDUCTION

GL449T/G449T FRAME MOUNTING HOLES

COOLING: FAN COOLED

617423-494

A

B

C

D

E

F

617423-494

DIMENSIONS ARE IN MILLIMETERS; SEE SHEET 1 FOR DIMENSIONS IN INCHES.  
WEIGHT (KGS): 1760, MOTOR WEIGHTS MAY VARY BY 15% DEPENDING ON RATING.  
CUSTOMER IS RESPONSIBLE FOR DETERMINING THAT MOTOR PERFORMANCE IS SUITABLE IN THE APPLICATION.

REV. DESC: NEW DRAWING			
REV: -	VERSION: 00	REVISED: 10:06:55 08/25/2017	TDR: 000001038750
MODEL NO. 617423-494		REF: -	
BY: USJEDIL		Material: -	

**BALDOR**

GL449/449T TEFC F1 FOOT TOP MOUNT CAST IRON CONDUIT BOX

C