

ABB BALDOR RELIANCE III

Customer information packet

ECP49308T-4

300HP, 885RPM, 3PH, 60HZ, L449T, TEFC, FOOT

Class - CLI GP A,B,C,D

Division - Division II

Specifications

Enclosure	TEFC
Frame	L449T
Frame Material	Iron
Frequency	60.00 Hz
Haz Area Class and Group	CLI GP A,B,C,D
Haz Area Division	Division II
Motor Letter Type	Three Phase
Output @ Frequency	300.000 HP @ 60 HZ
Phase	3
Synchronous Speed @ Frequency	900 RPM @ 60 HZ
Voltage @ Frequency	460.0 V @ 60 HZ
Agency Approvals	CCSAUSEEV
Ambient Temperature	40 °C
Auxiliary Box	NO AUXILLARY BOX
Base Indicator	Rigid
Bearing Grease Type	Polyrex EM (-20F +300F)
Constant Torque Speed Range	30-60
Current @ Voltage	378.000 A @ 460.0 V
Design Code	B
Drip Cover	No Drip Cover
Duty Rating	CONT
Efficiency @ 100% Load	95.0 %
Enclosure Modification	Severe Duty Features
Feedback Device	NO FEEDBACK
Frame Prefix	L
Haz Area Temp Code	T2A
Heater Indicator	No Heater
High Voltage Full Load Amps	378.0 a
Insulation Class	F
Inverter Code	Not Inverter
KVA Code	G
Lifting Lugs	Standard Lifting Lugs

Part Detail

Revision	L
Type	AC
Mech. spec.	
Base	
Status	PRD/A
Elec. spec.	A44WG2420
Layout	617423-006
Eff. date	10-24-2024
CD Diagram	416820-036
Poles	08
Leads	3#2 (04 per group)
Proprietary	False
Created date	06-11-2014

Motor Lead Quantity/Wire Size	12 @ 2 AWG
Motor Standards	NEMA
Motor Type	A44208M
Mounting Arrangement	F1
Number of Poles	8
Overall Length	60.13 IN
Power Factor	78
Pulley End Bearing Type	Ball
Pulley Face Code	Standard
Service Factor	1.00
Shaft Diameter	3.375 IN
Shaft Ground Indicator	No Shaft Grounding
Shaft Rotation	Reversible
Shaft Slinger Indicator	Shaft Slinger
Speed	885 rpm
Speed Code	Single Speed
Starting Method	Direct on line
Thermal Device - Bearing	None
Thermal Device - Winding	None

Nameplate

NP3238

CAT NO	ECP49308T-4	SPEC NO.	A44-5913-2420							
HP	300	AMPS	378	VOLTS	460	DESIGN	B			
FRAME	L449T	RPM	885	HZ	60	AMB	40	SF	1.15	
D.E. BRG.DATA	6222	O.D.E. BRG.DATA	6318		PH	3	DUTY	CONT	INSUL.CLASS	F
D.E. BRG.	110BC02J30X	TYPE	P	ENCL	TEFC	CODE	G			
O.D.E. BRG.	90BC03J30X	POWER FACTOR	78		NEMA NOM EFFICIENCY	95				
3/4 LOAD EFF.	95.4	MAX CORR KVAR	99.0		GUARANTEED EFFICIENCY	94.1				
TEMP CODE	T2A	TEMP =	280							
CHP HZ	60-75	CT HZ	30-60	VT HZ	6-60					
INVERTER-TEMP-CODE	T2A									
SER.NO.		MOTOR WEIGHT								

REL. S.O.	FRAME	HP	TYPE	PHASE/ HERTZ	RPM	VOLTS
	449L	300	P	3/60	885	460
AMPS	DUTY	AMB °C/ INSUL.	S.F.	NEMA DESIGN	CODE LETTER	ENCL.
378	CONT	40/F	1.00	B	G	TEFC
E/S	ROTOR	TEST S.O.	TEST DATE	STATOR RES. @25 °C OHMS (BETWEEN LINES)		
401940	418143-87-TE	---	---	.0124		
PERFORMANCE						
LOAD	HP	AMPERES	RPM	% POWER FACTOR	% EFFICIENCY	
NO LOAD	0	143	900	3.34	0	
1/4	75.1	172	897	44.0	92.9	
2/4	150	227	894	65.0	95.2	
3/4	225	298	891	74.0	95.4	
4/4	300	378	887	78.0	95.1	
5/4	375	463	883	80.2	94.5	
SPEED TORQUE						
		RPM	TORQUE % FULL LOAD	TORQUE LB.-FT.	AMPERES	
LOCKED ROTOR		0	174	3090	2200	
PULL UP		180	135	2400	2124	
BREAKDOWN		853	229	4065	1146	
FULL LOAD		887	100	1776	378	
<p>AMPERES SHOWN FOR 460. VOLT CONNECTION. IF OTHER VOLTAGE CONNECTIONS ARE AVAILABLE, THE AMPERES WILL VARY INVERSELY WITH THE RATED VOLTAGE</p> <p>REMARKS: CALCULATED DATA</p>						
BALDOR		DR. BY <u>P. B. GREENE</u>		A-C MOTOR PERFORMANCE A44WG2420-R002 DATA		
		CK. BY <u>K. W. KANOUFF</u>				
		APP. BY <u>K. W. KANOUFF</u>		ISSUE DATE 06/15/00		
		DATE <u>06/15/00</u>				

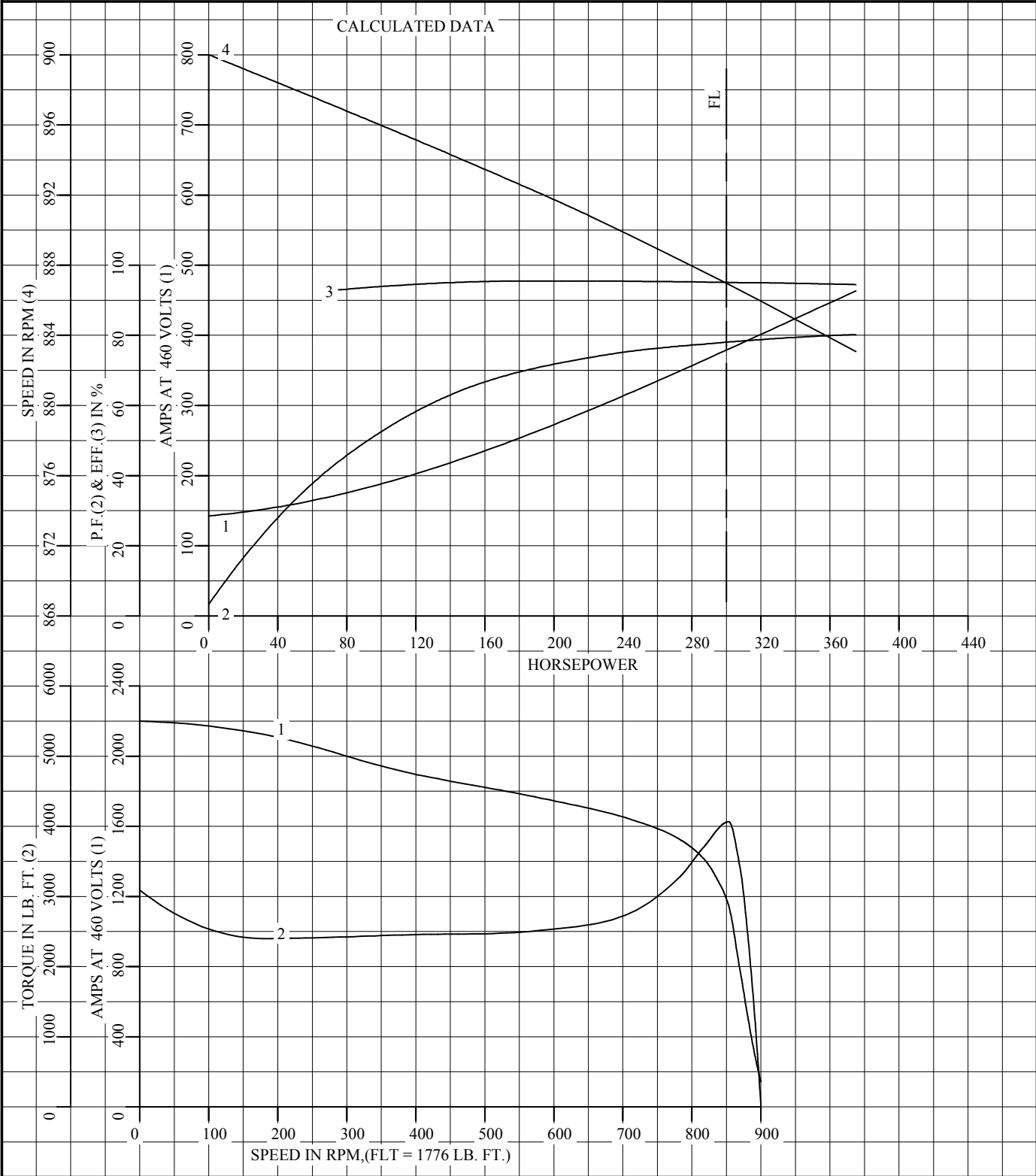
FRAME 449L
HP 300
TYPE P
PHASE/HERTZ 3/60

RPM 885
VOLTS 460
AMPS 378
DUTY CONT
AMB °C/INSUL 40/F

NEMA DESIGN B
CODE LETTER G
ENCLOSURE TEFC
E/S 401940

TEST S.O. ---
TEST DATE ---
STATOR RES. @ 25 °C .0124
OHMS (BETWEEN LINES)

CALCULATED DATA

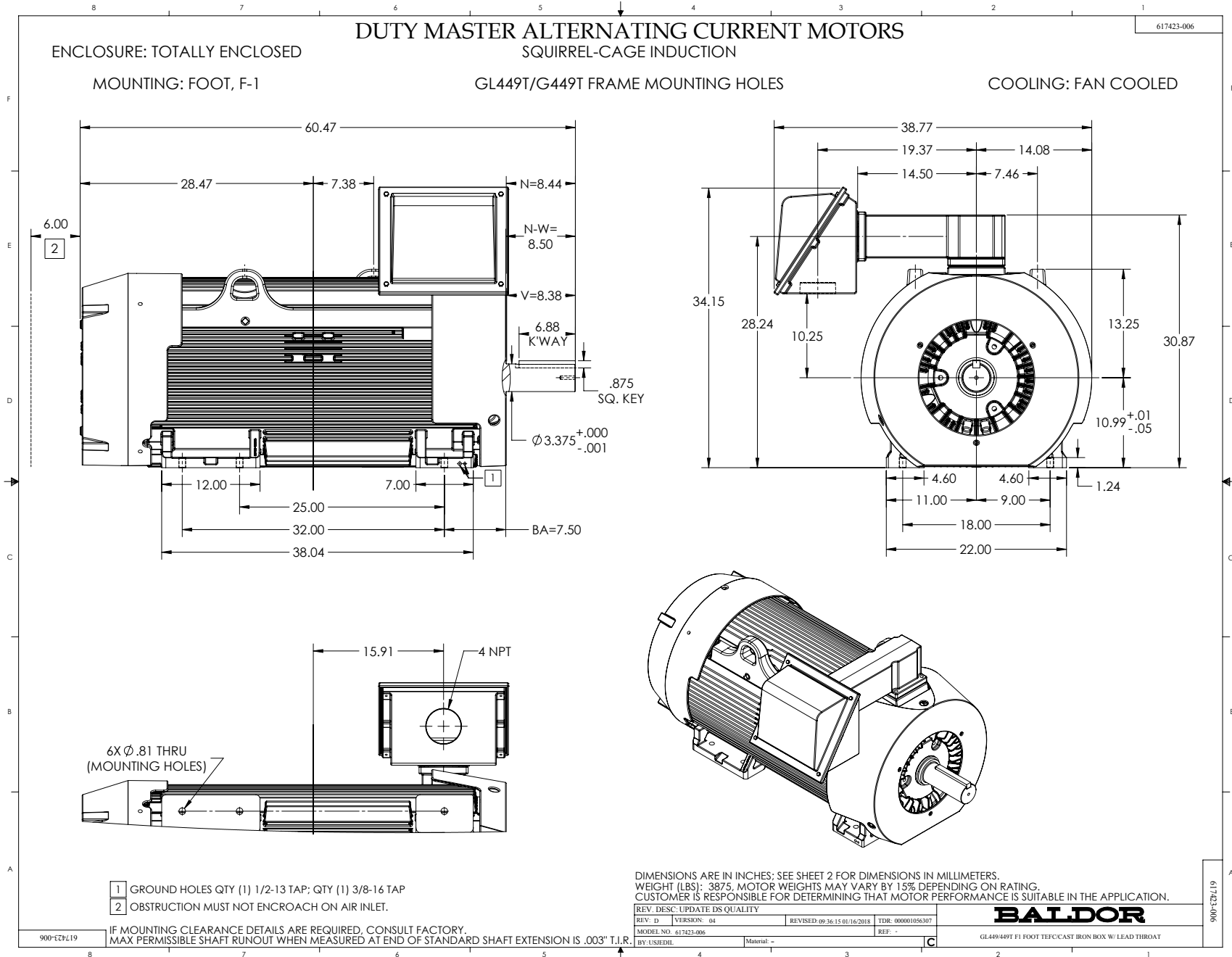


AMPERES SHOWN FOR 460 VOLT CONNECTION, IF OTHER VOLTAGE CONNECTIONS ARE AVAILABLE, THE AMPERES WILL VARY INVERSELY WITH THE RATED VOLTAGE.



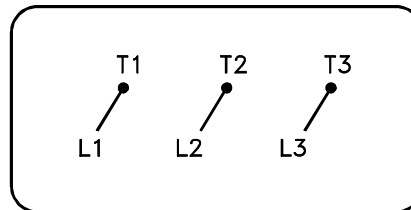
DR. BY P.B. GREENE
CK. BY K.W. KANOUFF
APP. BY K.W. KANOUFF
DATE 06/15/00

**A-C MOTOR
PERFORMANCE CURVES** A44WG2420-R002
ISSUE DATE 06/15/00



416820-036

**A-C MOTOR
CONNECTION DIAGRAM
STANDARD 3 LEAD CONNECTED**



(N.P. 1575-BA)

416820-036

REV. DESC: LOADED TO BUS, C/R 335225		
REV. LTR: -	VERSION: 00	TDR: 000000538207
FILE: \MGA\00000\682	REVISED: 11: 54: 06 04/30/2010	
MTL: -	BY: RAGRA	

BALDOR

CONN DIAG - STANDARD 3 LEAD
SH 1 of 1