



---

# Customer information packet

## ECP4419T-4

75HP, 890RPM, 3PH, 60HZ, 444T, TEFC, F1

Class - CLI GP A,B,C,D

Division - Division II

## Specifications

|                               |                         |
|-------------------------------|-------------------------|
| Enclosure                     | TEFC                    |
| Frame                         | 444T                    |
| Frame Material                | Iron                    |
| Frequency                     | 60.00 Hz                |
| Haz Area Class and Group      | CL I GP A,B,C,D         |
| Haz Area Division             | Division II             |
| Motor Letter Type             | Three Phase             |
| Output @ Frequency            | 75.000 HP @ 60 HZ       |
| Phase                         | 3                       |
| Synchronous Speed @ Frequency | 900 RPM @ 60 HZ         |
| Voltage @ Frequency           | 460.0 V @ 60 HZ         |
| Agency Approvals              | CCSAUSEEV               |
| Ambient Temperature           | 40 °C                   |
| Auxillary Box                 | No Auxillary Box        |
| Base Indicator                | Rigid                   |
| Bearing Grease Type           | Polyrex EM (-20F +300F) |
| Constant Torque Speed Range   | 10-60                   |
| Current @ Voltage             | 89.300 A @ 460.0 V      |
| Design Code                   | B                       |
| Drip Cover                    | No Drip Cover           |
| Duty Rating                   | CONT                    |
| Efficiency @ 100% Load        | 94.5 %                  |
| Feedback Device               | NO FEEDBACK             |
| Haz Area Temp Code            | T3                      |
| Heater Indicator              | No Heater               |
| High Voltage Full Load Amps   | 89.3 a                  |
| Insulation Class              | F                       |
| Inverter Code                 | Inverter Ready          |
| KVA Code                      | F                       |
| Lifting Lugs                  | Standard Lifting Lugs   |
| Motor Lead Quantity/Wire Size | 3 @ 2 AWG               |
| Motor Standards               | NEMA                    |

## Part detail

|              |            |
|--------------|------------|
| Revision     | J          |
| Type         | AC         |
| Mech. spec.  |            |
| Base         |            |
| Status       | PRD/A      |
| Elec. spec.  | A44WG2447  |
| Layout       | 617427-001 |
| Eff. date    | 10-24-2024 |
| CD Diagram   | 416820-036 |
| Poles        | 08         |
| Leads        | 3#2        |
| Proprietary  | False      |
| Created date | 12-04-2013 |

|                                 |                    |
|---------------------------------|--------------------|
| <b>Motor Type</b>               | A44072M            |
| <b>Mounting Arrangement</b>     | F1                 |
| <b>Number of Poles</b>          | 8                  |
| <b>Overall Length</b>           | 44.75 IN           |
| <b>Power Factor</b>             | 82                 |
| <b>Product Family</b>           | General Industrial |
| <b>Pulley End Bearing Type</b>  | Ball               |
| <b>Pulley Face Code</b>         | Standard           |
| <b>Service Factor</b>           | 1.15               |
| <b>Shaft Diameter</b>           | 3.375 IN           |
| <b>Shaft Ground Indicator</b>   | No Shaft Grounding |
| <b>Shaft Rotation</b>           | Reversible         |
| <b>Shaft Slinger Indicator</b>  | Shaft Slinger      |
| <b>Speed</b>                    | 890 rpm            |
| <b>Speed Code</b>               | Single Speed       |
| <b>Starting Method</b>          | Direct on line     |
| <b>Thermal Device - Bearing</b> | None               |
| <b>Thermal Device - Winding</b> | None               |

**Nameplate**

---

|                  |  |
|------------------|--|
| NP2496L          |  |
| MOBIL POLYREX EM |  |
|                  |  |

---

**NP3238**

|                           |            |                        |               |                              |      |               |      |                    |      |
|---------------------------|------------|------------------------|---------------|------------------------------|------|---------------|------|--------------------|------|
| <b>CAT NO</b>             | ECP4419T-4 | <b>SPEC NO.</b>        | A44-5202-2447 |                              |      |               |      |                    |      |
| <b>HP</b>                 | 75         | <b>AMPS</b>            | 89.3          | <b>VOLTS</b>                 | 460  | <b>DESIGN</b> | B    |                    |      |
| <b>FRAME</b>              | 444T       | <b>RPM</b>             | 890           | <b>HZ</b>                    | 60   | <b>AMB</b>    | 40   | <b>SF</b>          | 1.15 |
| <b>D.E. BRG.DATA</b>      | 6318       | <b>O.D.E. BRG.DATA</b> | 6318          | <b>PH</b>                    | 3    | <b>DUTY</b>   | CONT | <b>INSUL.CLASS</b> | F    |
| <b>D.E. BRG.</b>          | 90BC03J30X | <b>TYPE</b>            | P             | <b>ENCL</b>                  | TEFC | <b>CODE</b>   | F    |                    |      |
| <b>O.D.E. BRG.</b>        | 90BC03J30X | <b>POWER FACTOR</b>    | 82            | <b>NEMA NOM EFFICIENCY</b>   | 94.5 |               |      |                    |      |
| <b>3/4 LOAD EFF.</b>      | 94.7       | <b>MAX CORR KVAR</b>   | 20.0          | <b>GUARANTEED EFFICIENCY</b> | 93.6 |               |      |                    |      |
| <b>TEMP CODE</b>          | T3         | <b>TEMP =</b>          | 200           |                              |      |               |      |                    |      |
| <b>CHP HZ</b>             | 60-90      | <b>CT HZ</b>           | 10-60         | <b>VT HZ</b>                 | 0-60 |               |      |                    |      |
| <b>INVERTER-TEMP-CODE</b> | T3         |                        |               |                              |      |               |      |                    |      |
| <b>SER.NO.</b>            |            | <b>MOTOR WEIGHT</b>    |               |                              |      |               |      |                    |      |









617427-001

# DUTY MASTER ALTERNATING CURRENT MOTORS

## SQUIRREL-CAGE INDUCTION

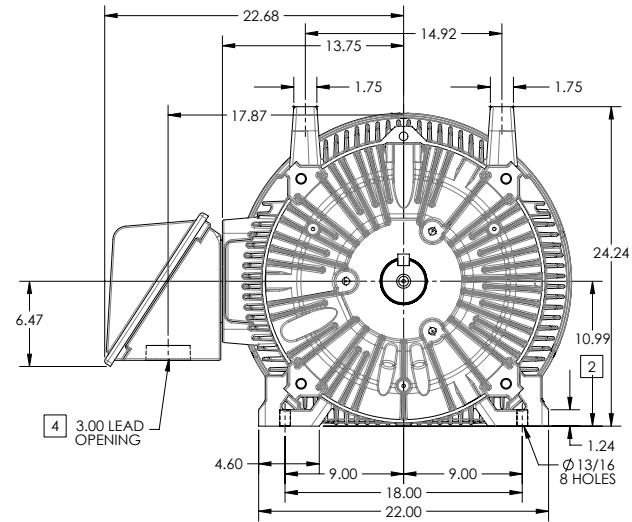
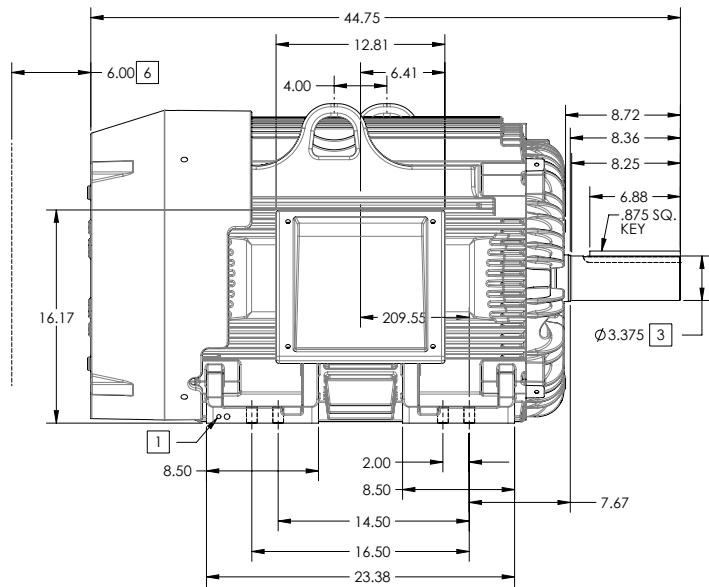
ENCLOSURE: TOTALLY ENCLOSED

FRAME G445T ABOVE NEMA RATINGS

COOLING: FAN COOLED

MOUNTING: FOOT

INCLUDES 444T FRAME MOUNTING HOLES



1. GROUND HOLES QTY 1 1/2-13 TAP; QTY 1 3/8-16 TAP
2. VARIES +.00,-.06
3. VARIES +.00,-.001
4. ON STANDARD MOTORS THIS IS CONDUIT SIZE. ON XT AND CORROSION PROOF MOTOR THIS IS PIPE TAP.
5. MOTOR WEIGHTS MAY VARY BY 15% DEPENDING ON RATING.
6. OBSTRUCTION MUST NOT ENCROACH ON AIR INLET

CONDUIT BOX LOCATED ON OPPOSITE SIDE WHEN F-2.  
IF MOUNTING CLEARANCE DETAILS ARE REQUIRED, CONSULT FACTORY.  
MAXIMUM PERMISSIBLE SHAFT RUNOUT WHEN MEASURED AT END OF STANDARD SHAFT EXTENSION IS .003" T.I.R. TO 5 INCH DIA.

**[5] WEIGHT (LBS): 2130**

DRIVE END AIR DEFLECTOR IS ONLY INCLUDED WHEN NECESSARY.

DIMENSIONS ARE IN INCHES; SEE SHEET 2 FOR DIMENSIONS IN MILLIMETERS

CUSTOMER IS RESPONSIBLE FOR DETERMINING THAT MOTOR PERFORMANCE IS SUITABLE IN THE APPLICATION.

SHEET NUMBER  
**1 OF 2**

100-272119

|  |             |                              |                  |
|--|-------------|------------------------------|------------------|
| REV. DESC SHEET 2 NEEDS METRIC FOOT HOLE DIMENSION |             |                              |                  |
| REV: E   | VERSION: 05 | REVISED: 09-22-56 06/12/2014 | TDR: 00000857938 |
| MODEL NO. 617427-001                               |             |                              | REF:             |
| BY: RAGRA  | Material:   |                              |                  |

**BALDOR**

G445T444T STD - FOOTED - SIDE CENTER CB

617427-001

# DUTY MASTER ALTERNATING CURRENT MOTORS

## SQUIRREL-CAGE INDUCTION

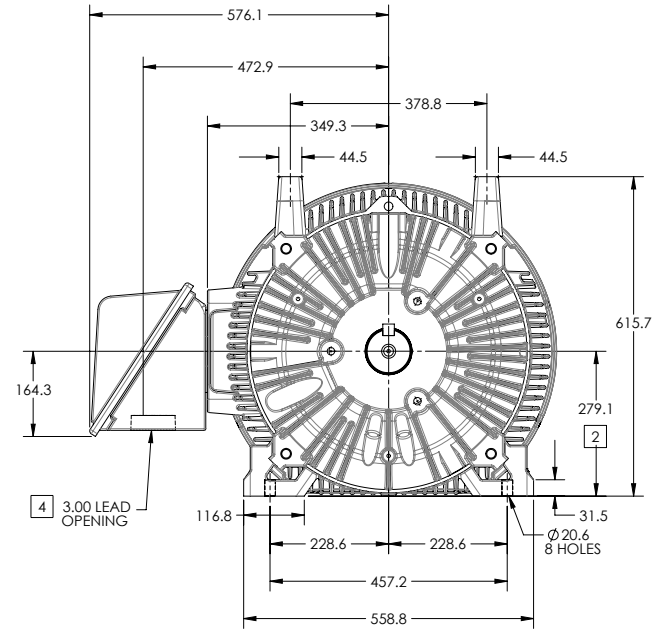
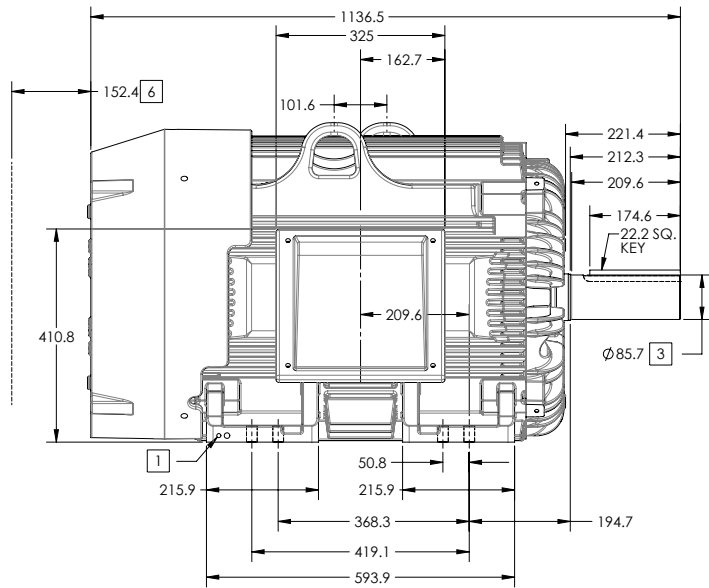
ENCLOSURE: TOTALLY ENCLOSED

FRAME G445T ABOVE NEMA RATINGS

COOLING: FAN COOLED

MOUNTING: FOOT

INCLUDES 444T FRAME MOUNTING HOLES



- 1. GROUND HOLES QTY 1 1/2-13 TAP; QTY 1 3/8-16 TAP
- 2. VARIES +0,-1.5
- 3. VARIES +.00,-.03
- 4. ON STANDARD MOTORS THIS IS CONDUIT SIZE. ON XT AND CORROSION PROOF MOTOR THIS IS PIPE TAP.
- 5. MOTOR WEIGHTS MAY VARY BY 15% DEPENDING ON RATING.
- 6. OBSTRUCTION MUST NOT ENCROACH ON AIR INLET

CONDUIT BOX LOCATED ON OPPOSITE SIDE WHEN F-2. IF MOUNTING CLEARANCE DETAILS ARE REQUIRED, CONSULT FACTORY. MAXIMUM PERMISSIBLE SHAFT RUNOUT WHEN MEASURED AT END OF STANDARD SHAFT EXTENSION IS .08 MM T.I.R. TO 127 MM DIA.

**[5] WEIGHT (KGS): 970**

DRIVE END AIR DEFLECTOR IS ONLY INCLUDED WHEN NECESSARY.

DIMENSIONS ARE IN MILLIMETERS; SEE SHEET 1 FOR DIMENSIONS IN INCHES

CUSTOMER IS RESPONSIBLE FOR DETERMINING THAT MOTOR PERFORMANCE IS SUITABLE IN THE APPLICATION.

SHEET NUMBER  
**2 OF 2**

100-LCFL19

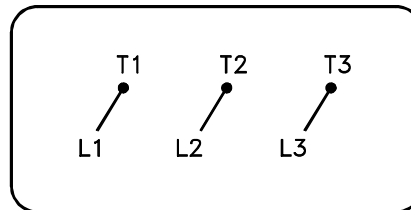
|  |             |                              |                  |
|--|-------------|------------------------------|------------------|
| REV. DESC SHEET 2 NEEDS METRIC FOOT HOLE DIMENSION |             |                              |                  |
| REV: E   | VERSION: 05 | REVISED: 09-22-56 06/12/2014 | TDR: 00000857938 |
| MODEL NO. 617427-001                               |             | REF:                         |                  |
| BY: RAGRA  | Material:   | C                            |                  |

**BALDOR**

G445T444T STD - FOOTED - SIDE CENTER C/B

416820-036

A-C MOTOR  
CONNECTION DIAGRAM  
STANDARD 3 LEAD CONNECTED



(N.P. 1575-BA)

416820-036

|                                      |                              |                   |
|--------------------------------------|------------------------------|-------------------|
| REV. DESC: LOADED TO BUS, C/R 335225 |                              |                   |
| REV. LTR: -                          | VERSION: 00                  | TDR: 000000538207 |
| FILE: \MGA\00000\682                 | REVISED: 11:54:06 04/30/2010 |                   |
| MTL: -                               | BY: RAGRA                    |                   |

**BALDOR**

CONN DIAG - STANDARD 3 LEAD  
SH 1 of 1