



Customer information packet

ECP4416T-4

200HP, 3570RPM, 3PH, 60HZ, 447TS, A44104M, TEF

Class - CLI GP A,B,C,D

Division - Division II

Specifications

Enclosure	TEFC
Frame	447TS
Frame Material	Iron
Frequency	60.00 Hz
Haz Area Class and Group	CL I GP A,B,C,D
Haz Area Division	Division II
Motor Letter Type	Three Phase
Output @ Frequency	200.000 HP @ 60 HZ
Phase	3
Synchronous Speed @ Frequency	3600 RPM @ 60 HZ
Voltage @ Frequency	460.0 V @ 60 HZ
Agency Approvals	CCSAUSEEV
Ambient Temperature	40 °C
Auxiliary Box	NO AUXILLARY BOX
Base Indicator	Rigid
Bearing Grease Type	Polyrex EM (-20F +300F)
Constant Torque Speed Range	30-60
Current @ Voltage	213.000 A @ 460.0 V
Design Code	B
Drip Cover	No Drip Cover
Duty Rating	CONT
Efficiency @ 100% Load	96.2 %
Feedback Device	NO FEEDBACK
Haz Area Temp Code	T3
Heater Indicator	No Heater
High Voltage Full Load Amps	213.0 a
Insulation Class	F
Inverter Code	Inverter Ready
KVA Code	G
Lifting Lugs	No Lifting Lugs
Motor Lead Quantity/Wire Size	6 @ 1 AWG
Motor Standards	NEMA

Part detail

Revision	V
Type	AC
Mech. spec.	
Base	
Status	PRD/A
Elec. spec.	A44WG1504
Layout	617435-836
Eff. date	11-04-2025
CD Diagram	416820-036
Poles	02
Leads	3#1 (02 per group)
Proprietary	False
Created date	08-16-2012

Motor Type	A44104M
Mounting Arrangement	F1
Number of Poles	2
Overall Length	44.48 IN
Power Factor	91
Pulley End Bearing Type	Ball
Pulley Face Code	Standard
Service Factor	1.15
Shaft Diameter	2.375 IN
Shaft Ground Indicator	No Shaft Grounding
Shaft Rotation	Reversible
Shaft Slinger Indicator	No Slinger
Speed	3570 rpm
Speed Code	Single Speed
Starting Method	Direct on line
Thermal Device - Bearing	None
Thermal Device - Winding	None

Nameplate

NP3238

CAT NO	ECP4416T-4	SPEC NO.	P44G3947							
HP	200	AMPS	213	VOLTS	460	DESIGN	B			
FRAME	447TS	RPM	3570	HZ	60	AMB	40	SF	1.15	
D.E. BRG.DATA	6313	O.D.E. BRG.DATA	6313		PH	3	DUTY	CONT	INSUL.CLASS	F
D.E. BRG.	65BC03J30X	TYPE	P	ENCL	TEFC	CODE	G			
O.D.E. BRG.	65BC03J30X	POWER FACTOR	91	NEMA NOM EFFICIENCY	96.2					
3/4 LOAD EFF.	96.3	MAX CORR KVAR	21.0	GUARANTEED EFFICIENCY	95.8					
TEMP CODE	T3	TEMP =	200							
CHP HZ	60-75	CT HZ	30-60	VT HZ	0-60					
INVERTER-TEMP-CODE	T3									
SER.NO.		MOTOR WEIGHT								

S/O	FRAME	HP	TYPE	PHASE/ HERTZ	RPM	VOLTS
	447TS	200	P	3/60	3570	460

AMPS	DUTY	AMB °C/ INSUL	S.F.	NEMA DESIGN	CODE LETTER	ENCLOSURE
213	CONT	40/F	1.15	B	G	TEFC

E/S	ROTOR	TEST S.O.	TEST DATE	STATOR RES. @25 °C OHMS (BETWEEN LINES)
833199	418143005AE	---	---	.0144

PERFORMANCE


LOAD	HP	AMPERES	RPM	% POWER FACTOR	% EFFICIENCY
NO LOAD	0	46.4	3600	5.92	0
1/4	50.0	78.6	3593	63.5	93.9
2/4	100	118	3586	82.6	96.0
3/4	150	164	3578	88.7	96.3
4/4	200	213	3571	91.1	96.2
5/4	250	265	3562	92.0	95.9

SPEED TORQUE

	RPM	TORQUE % FULL LOAD	TORQUE LB.-FT.	AMPERES
LOCKED ROTOR	0	151	444	1446
PULL UP	288	124	363	1331
BREAKDOWN	3462	281	825	730
FULL LOAD	3571	100	294	213

AMPERES SHOWN FOR 460 VOLT CONNECTION. IF OTHER CONNECTIONS ARE AVAILABLE, THE AMPERES WILL VARY INVERSELY WITH THE RATED VOLTAGE.

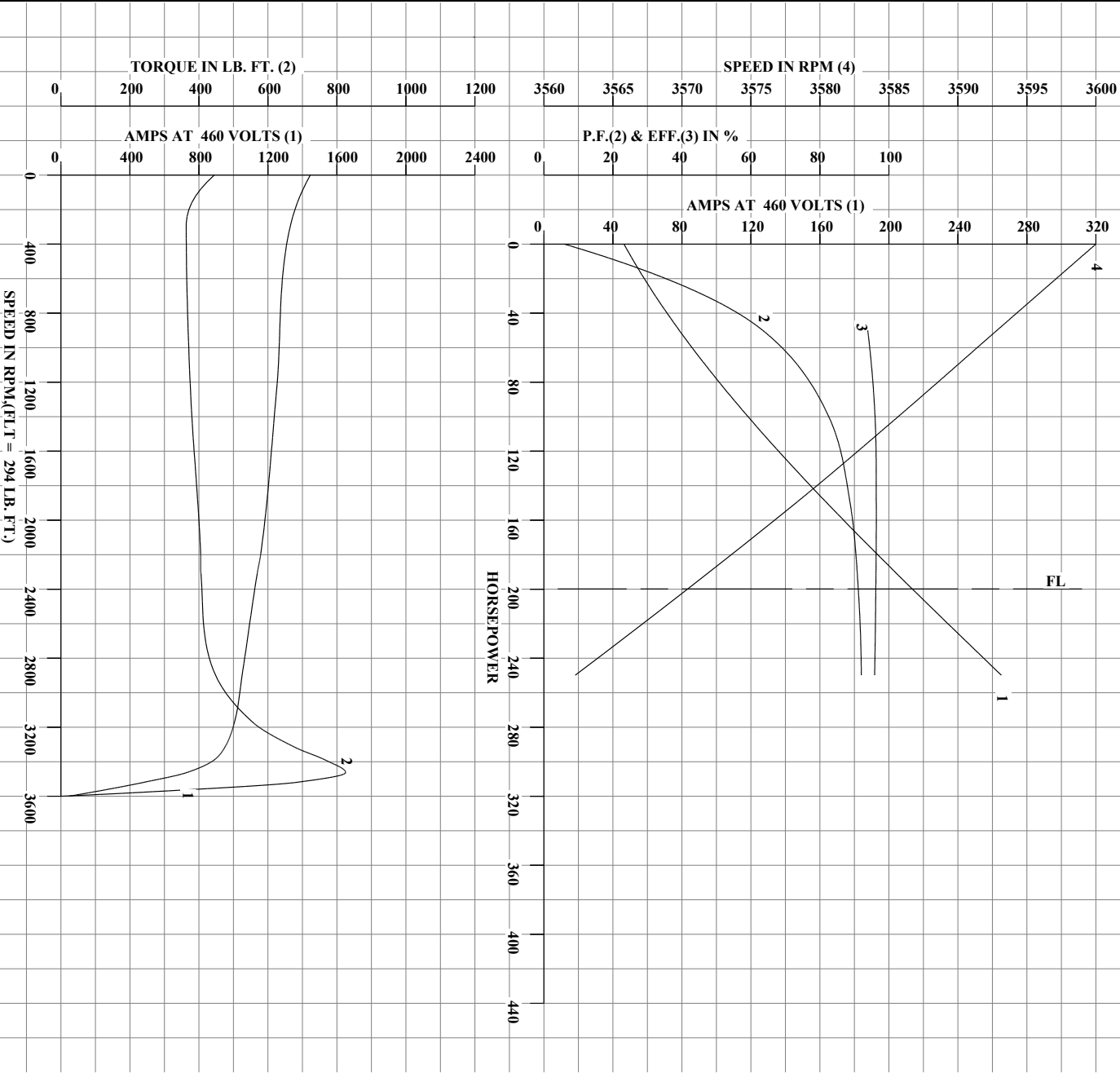
TYPICAL DATA

	DRAWN BY: W.L. SMITH CHECKED BY: J.J. HARRISON APPROVED BY: W.L. SMITH DATE: 08/04/10	AC MOTOR PERFORMANCE DATA	A44WG1504-R001 DATE ISSUED 12/18/10

USERCHRI

Printed on 05/22/2020 9:43 AM

REL.S.O.	447TS	RPM	3570	S.F.	1.15	ROTOR	418143005AE
FRAME	200	VOLTS	460	NEMA DESIGN	B	TEST S.O.	TYPICAL DATA
HP	200	AMPS	213	CODE LETTER	G	TEST DATE	---
TYPE	P	DUTY CONT		ENCLOSURE	TEFC	STATOR RES. @ 25°C	.0144
PHASE / HERTZ	3/60	AMB °C / INSUL	40/F	E/S	833199	OHMS (BETWEEN LINES)	



AMPERES SHOWN FOR 460 VOLT CONNECTION, IF OTHER VOLTAGE CONNECTIONS ARE AVAILABLE, THE AMPERES WILL VARY INVERSELY WITH THE RATED VOLTAGE.



DRAWN BY: W.L.SMITH
 CHECKED BY: J.J.HARRISON
 APPROVED BY: W.L.SMITH
 DATE: 08/04/10

AC MOTOR
 PERFORMANCE
 DATA

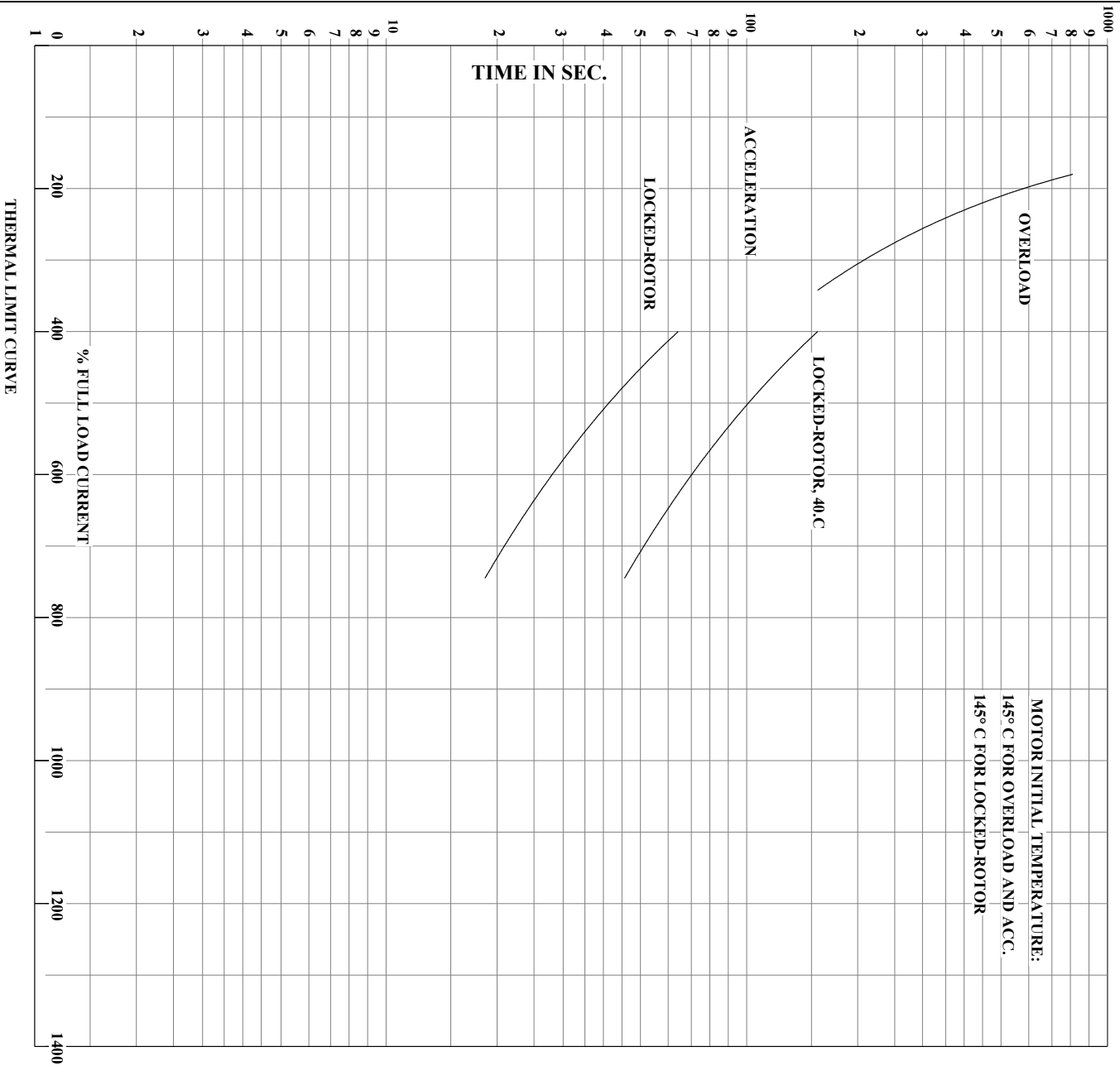
A44W/G1504-R001

USERCHRI

ISSUE DATE 12/8/10

Printed on 05/22/2020 9:43 AM

REL.S.O. FRAME 447TS	RPM 3570	S.F. 1.15	ROTOR 418143005AE
HP 200	VOLTS 460	NEMA DESIGN B	TEST S.O. TYPICAL DATA
TYPE P	AMPS 213	CODE LETTER G	TEST DATE ---
PHASE/HERTZ 3/60	DUTY CONT	ENCLOSURE TEF	STATOR RES. @ 25°C .0144
	AMB °C/INSUL 40/F	E/S 833199	OHMS (BETWEEN LINES)



AMPERES SHOWN FOR 460 VOLT CONNECTION, IF OTHER VOLTAGE CONNECTIONS ARE AVAILABLE, THE AMPERES WILL VARY INVERSELY WITH THE RATED VOLTAGE.



DRAWN BY: W.L.SMITH
 CHECKED BY: J.J.HARRISON
 APPROVED BY: W.L.SMITH
 DATE: 08/04/10

AC MOTOR
 PERFORMANCE
 DATA

A44WG1504-R001
 ISSUE DATE 12/8/10

USER:CHRI

Printed on 05/22/2020 9:43 AM

617435-836

DUTY MASTER ALTERNATING CURRENT MOTORS

SQUIRREL-CAGE INDUCTION

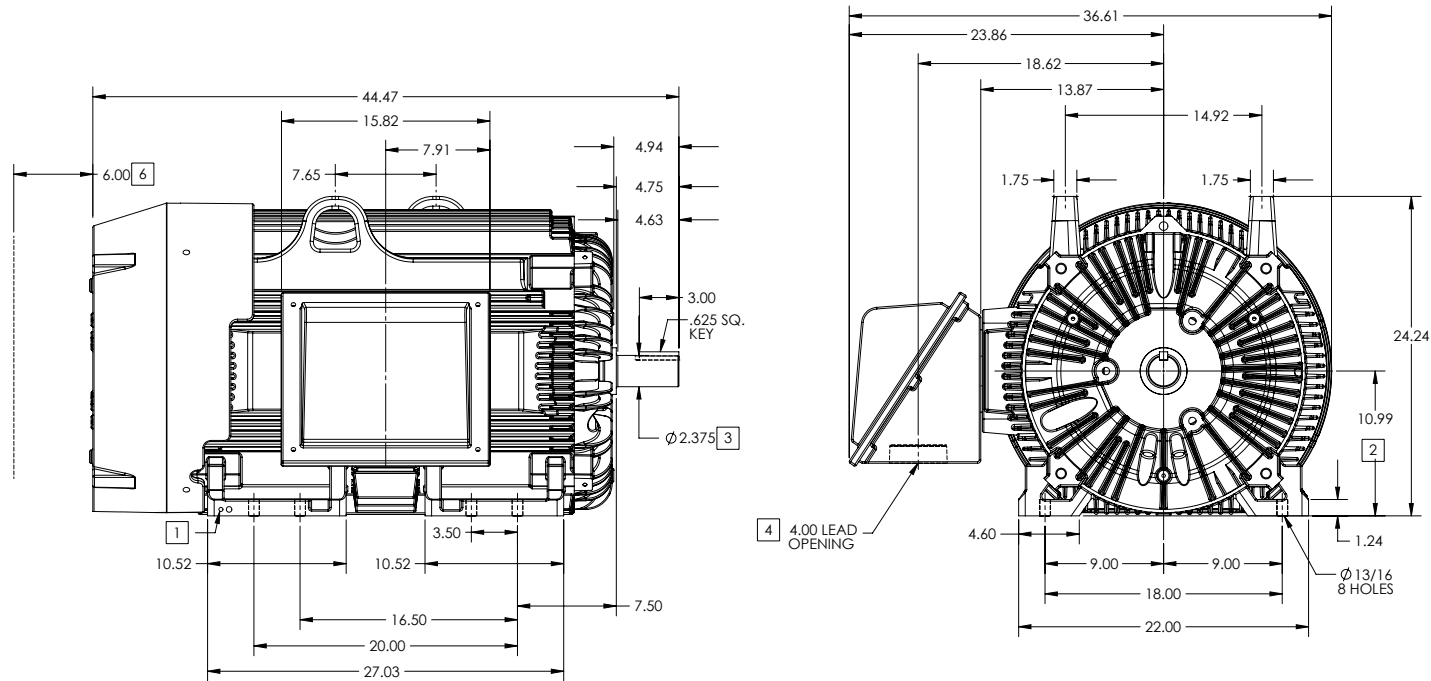
ENCLOSURE: TOTALLY ENCLOSED

FRAME G447TS ABOVE NEMA RATINGS

COOLING: FAN COOLED

MOUNTING: FOOT

INCLUDES 445TS FRAME MOUNTING HOLES



- 1. GROUND HOLES QTY 1 1/2-13 TAP; QTY 1 3/8-16 TAP
- 2. VARIES +.00,-.06
- 3. VARIES +.00,-.001
- 4. ON STANDARD MOTORS THIS IS CONDUIT SIZE. ON XT AND CORROSION PROOF MOTOR THIS IS PIPE TAP.
- 5. MOTOR WEIGHTS MAY VARY BY 15% DEPENDING ON RATING.
- 6. OBSTRUCTION MUST NO ENCROACH ON AIR INLET

[5] WEIGHT (LBS): 2480

DRIVE END AIR DEFLECTOR IS ONLY INCLUDED WHEN NECESSARY.

DIMENSIONS ARE IN INCHES; SEE SHEET 2 FOR DIMENSIONS IN MILLIMETERS

CUSTOMER IS RESPONSIBLE FOR DETERMINING THAT MOTOR PERFORMANCE IS SUITABLE IN THE APPLICATION.

CONDUIT BOX LOCATED ON OPPOSITE SIDE WHEN F-2.
IF MOUNTING CLEARANCE DETAILS ARE REQUIRED, CONSULT FACTORY.
MAXIMUM PERMISSIBLE SHAFT RUNOUT WHEN MEASURED AT END OF STANDARD SHAFT EXTENSION IS .003" T.I.R. TO 5 INCH DIA.

SHEET NUMBER
1 OF 2

9E8-5E7L19

REV. DESC: NEW DRAWING			
REV: -	VERSION: 00	REVISED: 03/28/59 11/01/2017	TDR: 00001049412
MODEL NO. 617435-836		REF:	
BY: RAGEC	Material:	C	

BALDOR

G447TS-445TS STD - FOOTED - SC CI C/B

617435-836

617435-836

DUTY MASTER ALTERNATING CURRENT MOTORS

SQUIRREL-CAGE INDUCTION

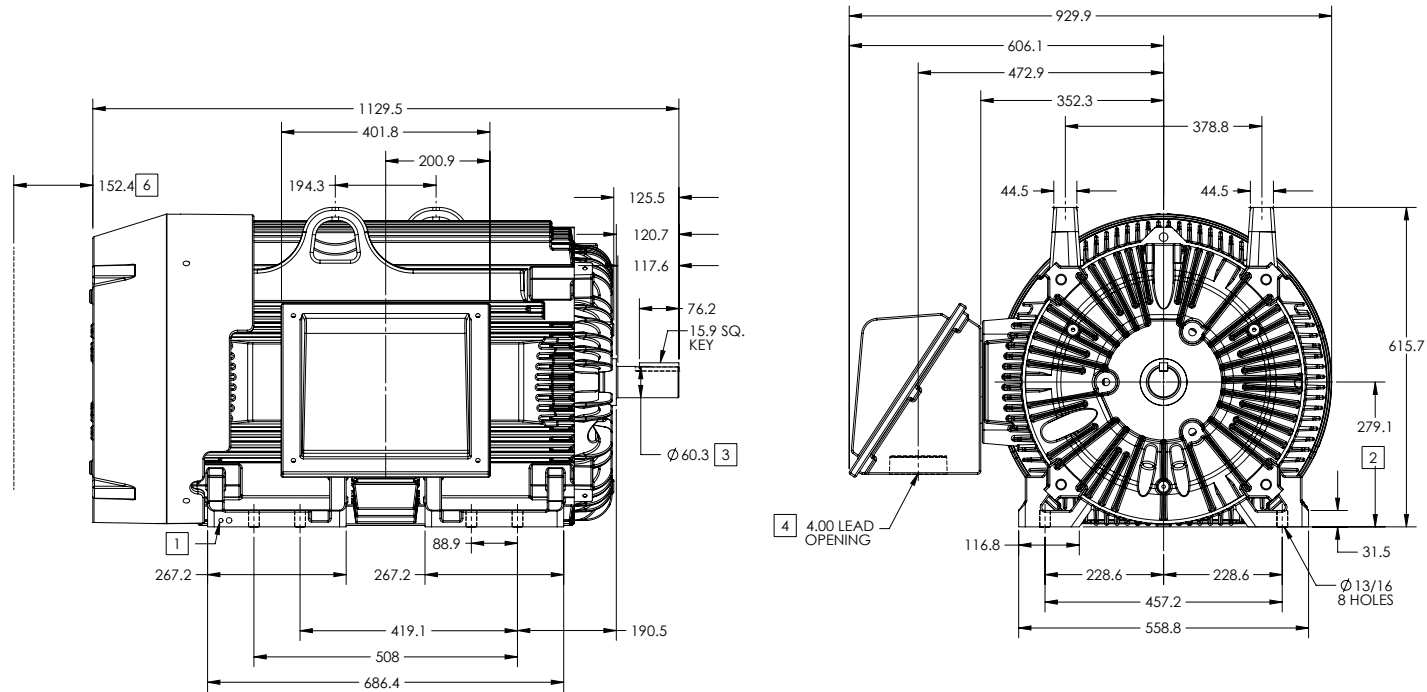
ENCLOSURE: TOTALLY ENCLOSED

FRAME G447TS ABOVE NEMA RATINGS

COOLING: FAN COOLED

MOUNTING: FOOT

INCLUDES 445TS FRAME MOUNTING HOLES



1. GROUND HOLES QTY 1 1/2-13 TAP; QTY 1 3/8-16 TAP
2. VARIES +0,-1.5
3. VARIES +.00,-.03
4. ON STANDARD MOTORS THIS IS CONDUIT SIZE. ON XT AND CORROSION PROOF MOTOR THIS IS PIPE TAP.
5. MOTOR WEIGHTS MAY VARY BY 15% DEPENDING ON RATING.
6. OBSTRUCTION MUST NO ENCROACH ON AIR INLET

[5] WEIGHT (KGS): 1125

DRIVE END AIR DEFLECTOR IS ONLY INCLUDED WHEN NECESSARY.

DIMENSIONS ARE IN MILLIMETERS; SEE SHEET 1 FOR DIMENSIONS IN INCHES

CUSTOMER IS RESPONSIBLE FOR DETERMINING THAT MOTOR PERFORMANCE IS SUITABLE IN THE APPLICATION.

CONDUIT BOX LOCATED ON OPPOSITE SIDE WHEN F-2.
IF MOUNTING CLEARANCE DETAILS ARE REQUIRED, CONSULT FACTORY.
MAXIMUM PERMISSIBLE SHAFT RUNOUT WHEN MEASURED AT END OF STANDARD SHAFT EXTENSION IS .08 MM T.I.R. TO 127 MM DIA.

SHEET NUMBER
2 OF 2

9E8-5E7L19

REV. DESC. NEW DRAWING	VERSION: 00	REVISED: 03/28/59 11/01/2017	TDR: 00001049412
MODEL NO. 617435-836	REF:		
BY: RAGEC	Material:		

BALDOR

G447TS-445TS STD - FOOTED - SC CI C/B

617435-836

416820-036

A-C MOTOR
CONNECTION DIAGRAM
STANDARD 3 LEAD CONNECTED



(N.P. 1575-BA)

REV. DESC: LOADED TO BUS, C/R 335225		
REV. LTR: -	VERSION: 00	TDR: 000000538207
FILE: \MGA\00000\682	REVISED: 11: 54: 06 04/30/2010	
MTL: -	BY: RAGRA	

BALDOR

CONN DIAG - STANDARD 3 LEAD
SH 1 of 1

416820-036