

DUTY MASTER ALTERNATING CURRENT MOTORS  
SQUIRREL-CAGE INDUCTION

617427-243

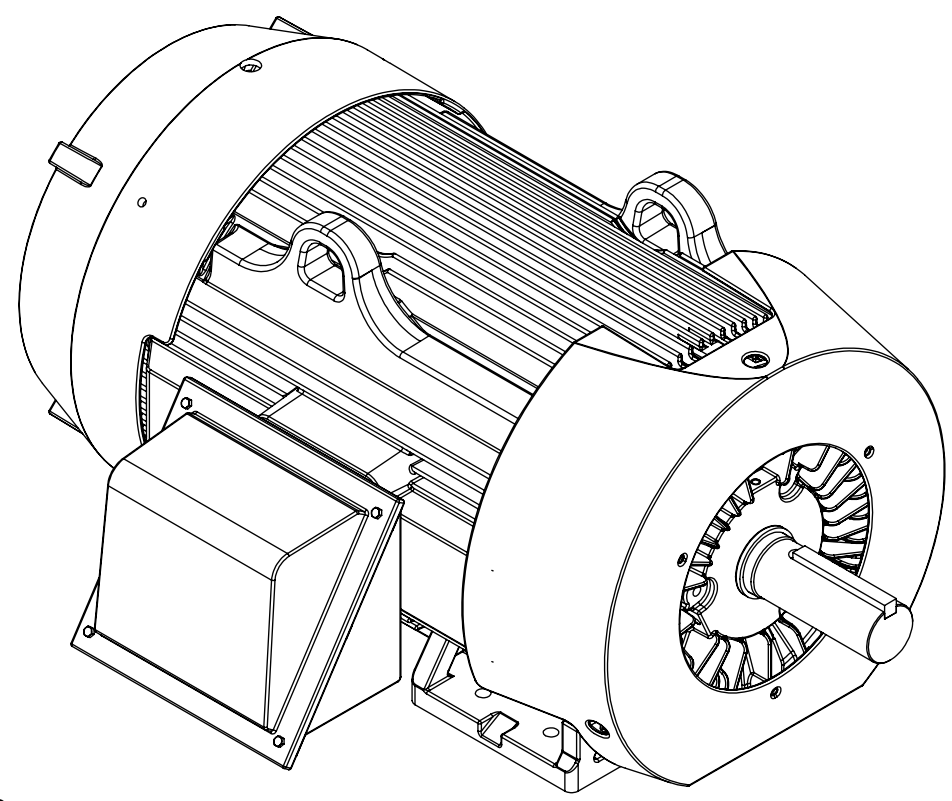
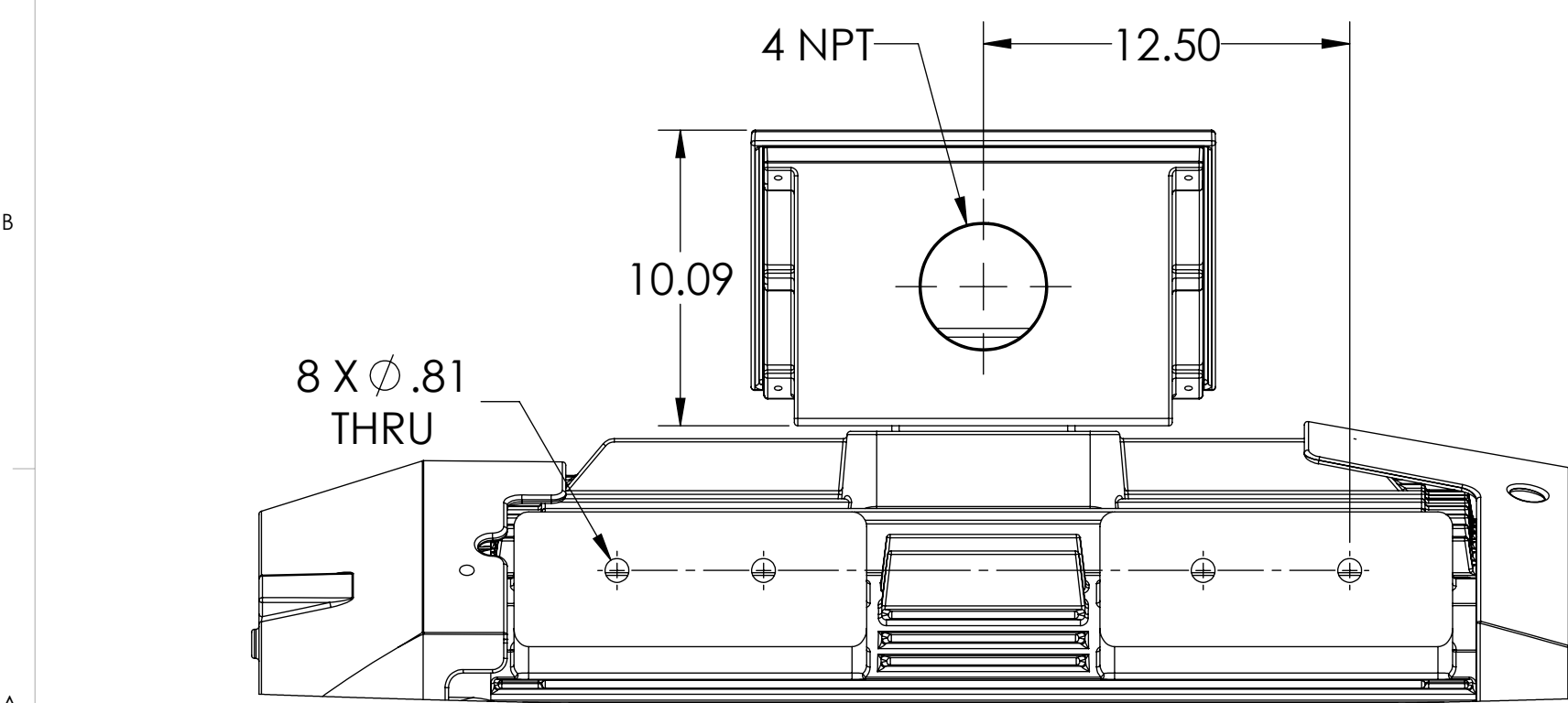
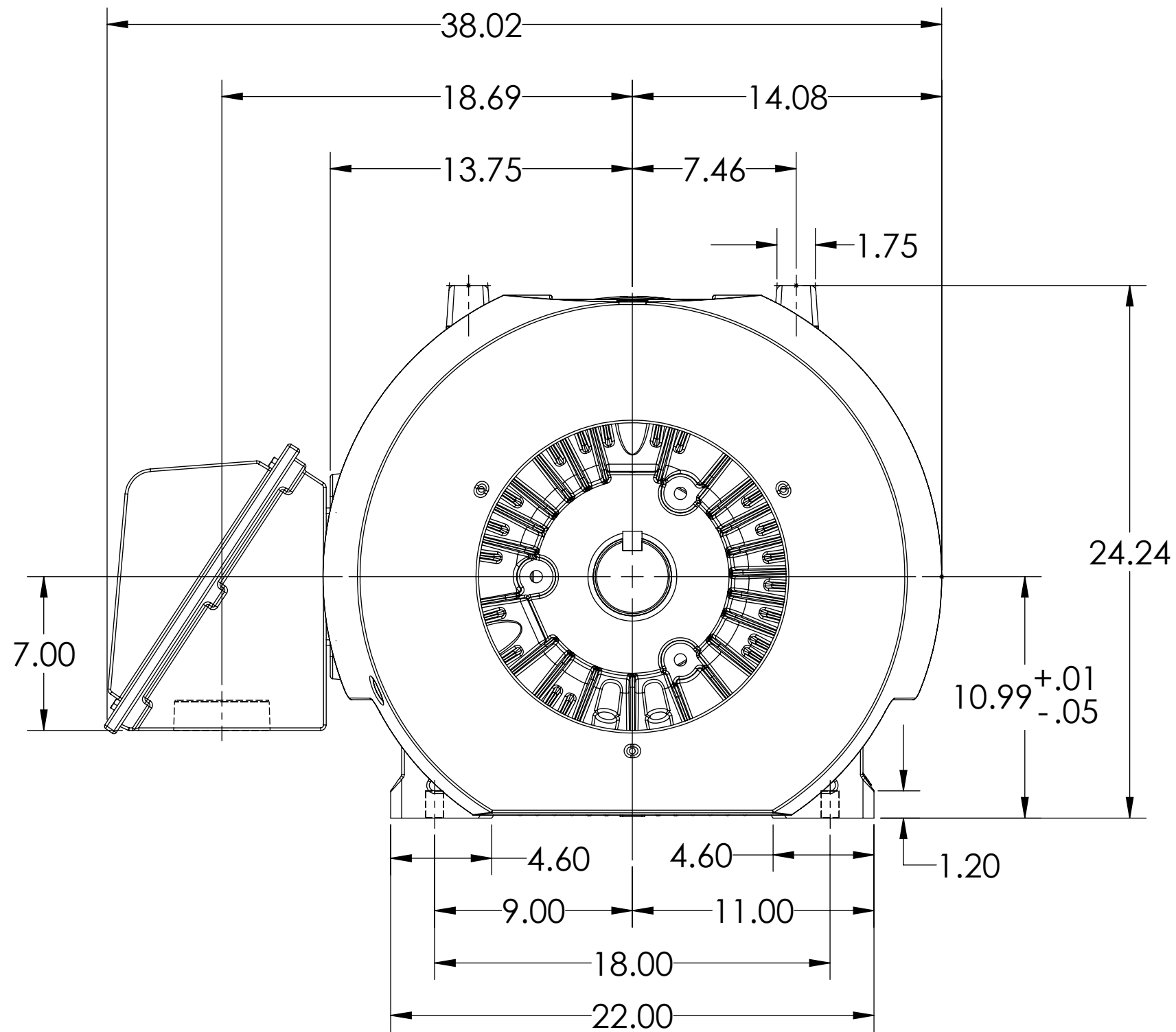
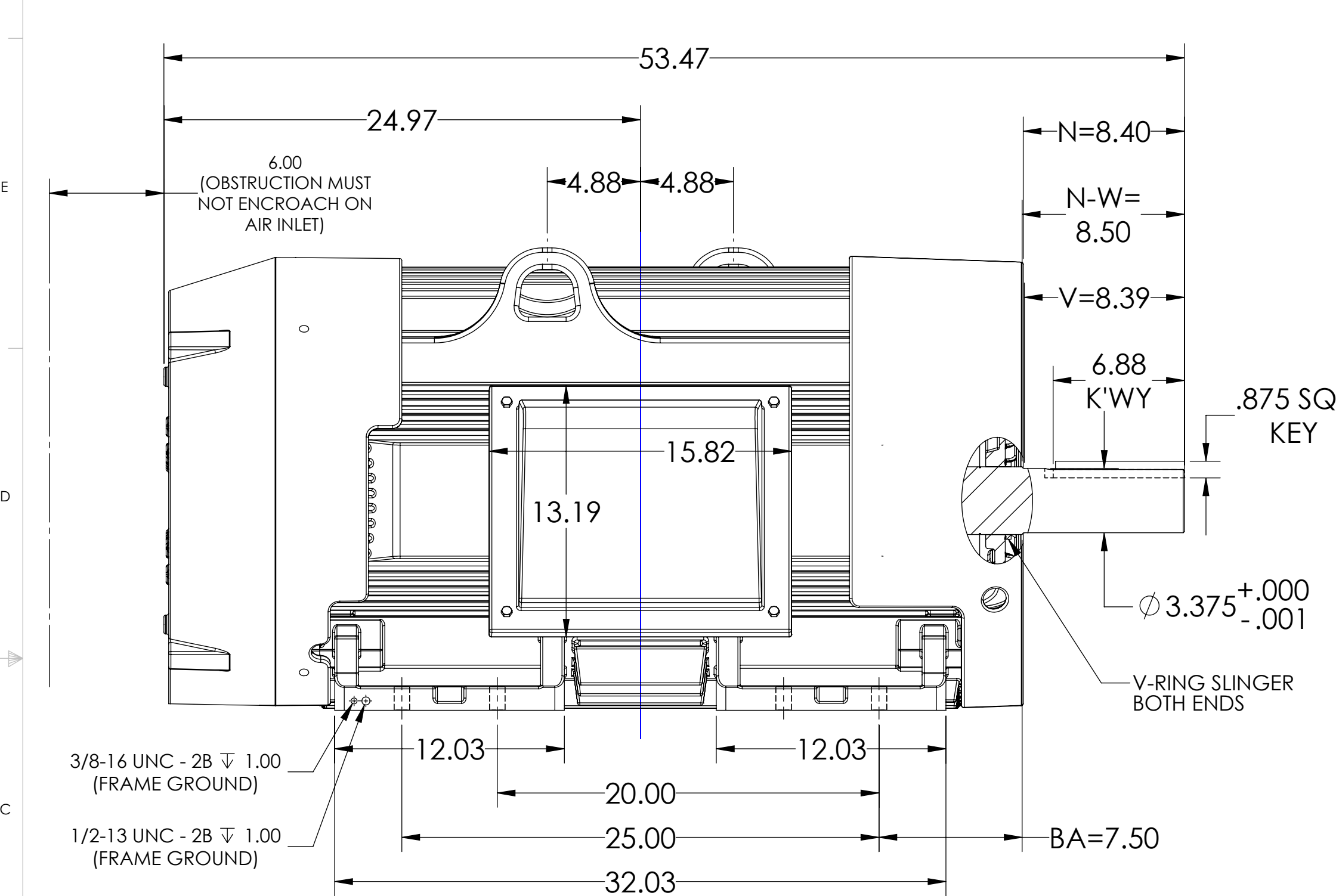
ENCLOSURE: TOTALLY ENCLOSED

COOLING: FAN COOLED

MOUNTING: FOOT, F-1 SIDE

FRAME G449T  
INCLUDES G447T FRAME MOUNTING HOLES

V-RING SLINGER BOTH ENDS



DIMENSIONS ARE IN INCHES  
WEIGHT (LBS.) 3045, MOTOR WEIGHTS MAY VARY BY 15% DEPENDING ON RATING  
CUSTOMER IS RESPONSIBLE FOR DETERMINING THAT MOTOR PERFORMANCE IS SUITABLE IN THE APPLICATION.

SHEET NUMBER  
1 OF 1

617427-243

IF MOUNTING CLEARANCE DETAILS ARE REQUIRED, CONSULT FACTORY.  
MAXIMUM PERMISSIBLE SHAFT RUNOUT WHEN MEASURED AT END OF  
STANDARD SHAFT EXTENSION IS .003" T.I.R.

REV. DESC: NEW DRAWING	VERSION: 00	REVISED: 11:33:27 02/03/2016	TDR: 000000961397
MODEL NO. 617427-243			
BY: RAGRA			

**BALDOR**

G449/447T TEFC F1 FT - V-RING SLINGERS - STD CI C/BOX

617427-243