

BALDOR • RELIANCE

Customer information packet

ECP4400TR-4

100HP, 1785RPM, 3PH, 60HZ, 405T, TEFC, F1

Class - CLI GP A,B,C,D

Division - Division II

Copyright © All product information within this document is subject to ABB Motors and Mechanical Inc. copyright © protection, unless otherwise noted.

8/15/2024 12:13:31 AM

Specifications

| | |
|-------------------------------|-----------------------------|
| Enclosure | TEFC |
| Frame | 405T |
| Frame Material | Iron |
| Frequency | 60.00 Hz |
| Haz Area Class and Group | CL I GP A,B,C,D |
| Haz Area Division | Division II |
| Motor Letter Type | Three Phase |
| Output @ Frequency | 100.000 HP @ 60 HZ |
| Phase | 3 |
| Synchronous Speed @ Frequency | 1800 RPM @ 60 HZ |
| Voltage @ Frequency | 460.0 V @ 60 HZ |
| Agency Approvals | CCSAUSEEV |
| Ambient Temperature | 40 °C |
| Auxillary Box | No Auxillary Box |
| Base Indicator | Rigid |
| Bearing Grease Type | Mobil SHC 220 (Athens Only) |
| Constant Torque Speed Range | 10-60 |
| Current @ Voltage | 112.000 A @ 460.0 V |
| Design Code | B |
| Drip Cover | No Drip Cover |
| Duty Rating | CONT |
| Efficiency @ 100% Load | 95.4 % |
| Feedback Device | NO FEEDBACK |
| Haz Area Temp Code | T2D |
| Heater Indicator | No Heater |
| High Voltage Full Load Amps | 112.0 a |
| Insulation Class | F |
| Inverter Code | Inverter Ready |
| KVA Code | G |
| Lifting Lugs | Standard Lifting Lugs |
| Motor Lead Quantity/Wire Size | 3 @ 2 AWG |
| Motor Standards | NEMA |

Part detail

| | |
|--------------|------------|
| Revision | K |
| Type | AC |
| Mech. spec. | |
| Base | |
| Status | PRD/A |
| Elec. spec. | A40WG0028 |
| Layout | 617429-501 |
| Eff. date | 02-18-2022 |
| CD Diagram | 416820-036 |
| Poles | 04 |
| Leads | 3#2 |
| Proprietary | False |
| Created date | 11-27-2013 |

| | |
|---------------------------------|--------------------|
| Motor Type | A40064M |
| Mounting Arrangement | F1 |
| Number of Poles | 4 |
| Overall Length | 38.20 IN |
| Power Factor | 87 |
| Product Family | General Industrial |
| Pulley End Bearing Type | Roller |
| Pulley Face Code | Standard |
| Service Factor | 1.15 |
| Shaft Diameter | 2.875 IN |
| Shaft Ground Indicator | No Shaft Grounding |
| Shaft Rotation | Reversible |
| Shaft Slinger Indicator | Shaft Slinger |
| Speed | 1785 rpm |
| Speed Code | Single Speed |
| Starting Method | Direct on line |
| Thermal Device - Bearing | None |
| Thermal Device - Winding | None |

Nameplate

| | |
|-----------------------|--|
| NP2496L | |
| MOBIL SHC -220 GREASE | |
| | |

NP3238

| | | | | | | |
|---------------------------|-------------|------------------------|---------------|------------------------------|------------------|----------------------|
| CAT NO | ECP4400TR-4 | SPEC NO. | A40-4839-0028 | | | |
| HP | 100 | AMPS | 112 | VOLTS 460 | DESIGN B | |
| FRAME | 405T | RPM | 1785 | HZ 60 | AMB 40 | SF 1.15 |
| D.E. BRG.DATA | NU316 | O.D.E. BRG.DATA | 6316 | PH 3 | DUTY CONT | INSUL.CLASS F |
| D.E. BRG. | 80RU03M30X | TYPE | P | ENCL TEFC | CODE G | |
| O.D.E. BRG. | 80BC03J30X | POWER FACTOR | 87 | NEMA NOM EFFICIENCY | 95.4 | |
| 3/4 LOAD EFF. | 95.7 | MAX CORR KVAR | 18.0 | GUARANTEED EFFICIENCY | 94.5 | |
| TEMP CODE | T2D | TEMP = | 215 | | | |
| CHP HZ | 60-90 | CT HZ | 10-60 | VT HZ | 0-60 | |
| INVERTER-TEMP-CODE | T2D | | | | | |
| SER.NO. | | MOTOR WEIGHT | | | | |

DUTY MASTER ALTERNATING CURRENT MOTORS

SQUIRREL-CAGE INDUCTION

ENCLOSURE: TOTALLY ENCLOSED

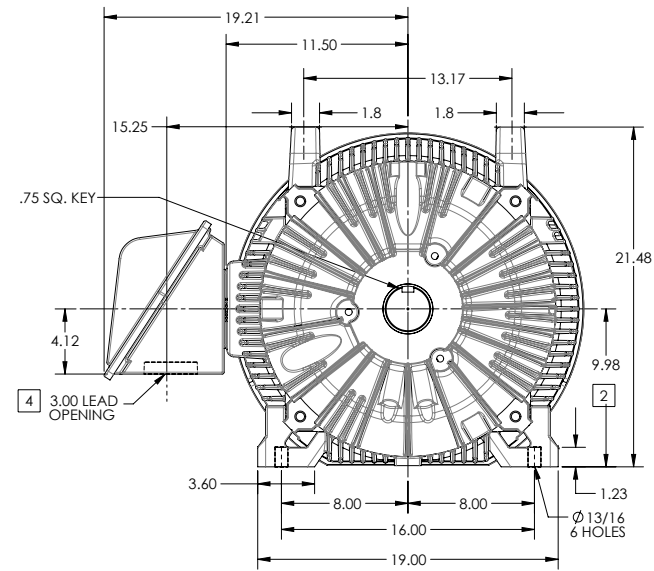
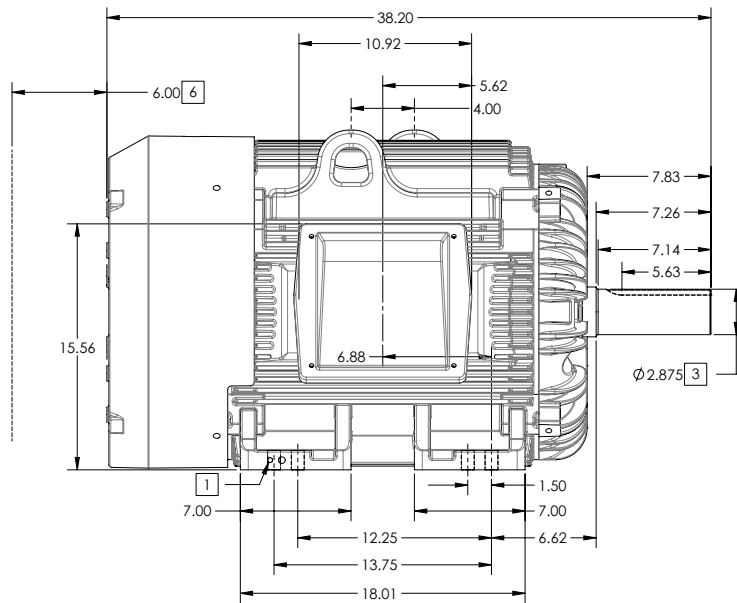
FRAME G405T ABOVE NEMA RATINGS

COOLING: FAN COOLED

MOUNTING: FOOT

INCLUDES 404T FRAME MOUNTING HOLES

XT/ECP SEVERE DUTY ENCLOSURE



- 1. GROUND HOLES QTY 1 1/2-13 TAP; QTY 1 3/8-16 TAP
- 2. VARIES +.00,-.06
- 3. VARIES +.00,-.001
- 4. ON STANDARD MOTORS THIS IS CONDUIT SIZE. ON XT AND CORROSION PROOF MOTOR THIS IS PIPE TAP.
- 5. MOTOR WEIGHTS MAY VARY BY 15% DEPENDING ON RATING.
- 6. OBSTRUCTION MUST NOT ENCROACH ON AIR INLET

[5] WEIGHT (LBS): 1370

CONDUIT BOX LOCATED ON OPPOSITE SIDE WHEN F-2. IF MOUNTING CLEARANCE DETAILS ARE REQUIRED, CONSULT FACTORY. MAXIMUM PERMISSIBLE SHAFT RUNOUT WHEN MEASURED AT END OF STANDARD SHAFT EXTENSION IS .003" T.I.R. TO 5 INCH DIA.

DIMENSIONS ARE IN INCHES; SEE SHEET 2 FOR DIMENSIONS IN MILLIMETERS

CUSTOMER IS RESPONSIBLE FOR DETERMINING THAT MOTOR PERFORMANCE IS SUITABLE IN THE APPLICATION.

SHEET NUMBER
1 OF 2

105-627219

| | | | |
|--|-------------|------------------------------|------------------|
| REV. DESC: CHANGE BA FROM 6.76 TO 6.62 | | | |
| REV: B | VERSION: 02 | REVISED: 01-11-16 04/14/2014 | TDR: 00000848770 |
| MODEL NO. 617429-501 | | REF: | |
| BY: MGHMMZ2 | Material: | C | |

BALDOR

G405T/404T STD - FOOTED - XT/ECP SEVERE DUTY ENCLOSURE

DUTY MASTER ALTERNATING CURRENT MOTORS

SQUIRREL-CAGE INDUCTION

ENCLOSURE: TOTALLY ENCLOSED

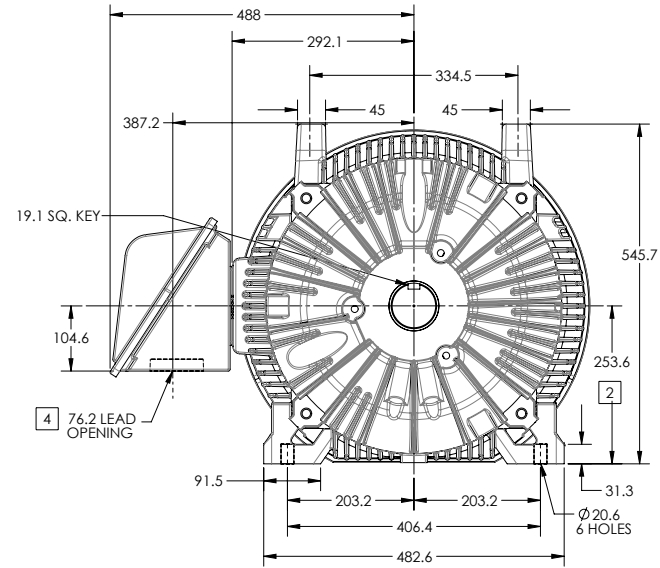
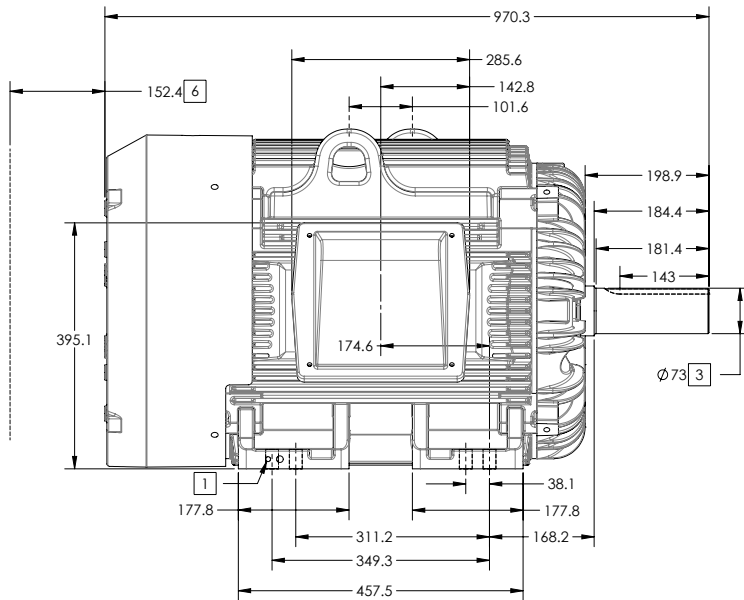
FRAME G405T ABOVE NEMA RATINGS

COOLING: FAN COOLED

MOUNTING: FOOT

INCLUDES 404T FRAME MOUNTING HOLES

XT/ECP SEVERE DUTY ENCLOSURE



1. GROUND HOLES QTY 1 1/2-13 TAP; QTY 1 3/8-16 TAP
2. VARIES +0,-1.5
3. VARIES +00,-.03
4. ON STANDARD MOTORS THIS IS CONDUIT SIZE. ON XT AND CORROSION PROOF MOTOR THIS IS PIPE TAP.
5. MOTOR WEIGHTS MAY VARY BY 15% DEPENDING ON RATING.
6. OBSTRUCTION MUST NOT ENCROACH ON AIR INLET

[5] WEIGHT (KGS): 630

CONDUIT BOX LOCATED ON OPPOSITE SIDE WHEN F-2.
IF MOUNTING CLEARANCE DETAILS ARE REQUIRED, CONSULT FACTORY.
MAXIMUM PERMISSIBLE SHAFT RUNOUT WHEN MEASURED AT END OF
STANDARD SHAFT EXTENSION IS .08 MM T.I.R. TO 127 MM DIA.

DIMENSIONS ARE IN MILLIMETERS; SEE SHEET 1 FOR DIMENSIONS IN INCHES

CUSTOMER IS RESPONSIBLE FOR DETERMINING THAT MOTOR PERFORMANCE IS SUITABLE IN THE APPLICATION.

SHEET NUMBER
2 OF 2

105-627219

| | |
|--|------------------------------|
| REV. DESC: CHANGE BA FROM 6.76 TO 6.62 | TDR: 00000848770 |
| REV: B VERSION: 02 | REVISED: 01-11-16 04/14/2014 |
| MODEL NO. 617429-501 | REF: |
| BY: MGHMMZ2 | Material: |

BALDOR

G405T/404T STD - FOOTED - XT/ECP SEVERE DUTY ENCLOSURE

416820-036

A-C MOTOR
CONNECTION DIAGRAM
STANDARD 3 LEAD CONNECTED



(N.P. 1575-BA)

416820-036

| | | |
|--------------------------------------|------------------------------|-------------------|
| REV. DESC: LOADED TO BUS, C/R 335225 | | |
| REV. LTR: - | VERSION: 00 | TDR: 000000538207 |
| FILE: \MGA\00000\682 | REVISED: 11:54:06 04/30/2010 | |
| MTL: - | BY: RAGRA | |

BALDOR

CONN DIAG - STANDARD 3 LEAD
SH 1 of 1