



Customer information packet

ECP4316T-4

75HP, 1780RPM, 3PH, 60HZ, 365T, A36070M, TEFC

Class - CLI GP A,B,C,D

Division - Division II

Specifications

Enclosure	TEFC
Frame	365T
Frame Material	Iron
Frequency	60.00 Hz
Haz Area Class and Group	CLI GP A,B,C,D
Haz Area Division	Division II
Motor Letter Type	Three Phase
Output @ Frequency	75.000 HP @ 60 HZ
Phase	3
Synchronous Speed @ Frequency	1800 RPM @ 60 HZ
Voltage @ Frequency	460.0 V @ 60 HZ
Agency Approvals	CCSAUSEEV NEMA PREMIUM NEMA_PREMIUM UR
Ambient Temperature	40 °C
Auxillary Box	No Auxillary Box
Base Indicator	Rigid
Bearing Grease Type	Polyrex EM (-20F +300F)
Constant Torque Speed Range	30-60
Current @ Voltage	86.000 A @ 460.0 V
Design Code	B
Drip Cover	No Drip Cover
Duty Rating	CONT
Efficiency @ 100% Load	95.4 %
Enclosure Modification	Severe Duty Features
Feedback Device	NO FEEDBACK
Haz Area Temp Code	T3
Heater Indicator	No Heater
High Voltage Full Load Amps	86.0 a
Insulation Class	F
Inverter Code	Inverter Ready

Part detail

Revision	M
Type	AC
Mech. spec.	
Base	
Status	PRD/A
Elec. spec.	A36WG3963
Layout	617428-034
Eff. date	08-26-2024
CD Diagram	416820-036
Poles	04
Leads	3#4 Y
Proprietary	False
Created date	05-16-2019

IP Rating	IP55
KVA Code	G
Lifting Lugs	Standard Lifting Lugs
Max Speed	2700 rpm
Motor Lead Quantity/Wire Size	3 @ 4 AWG
Motor Standards	NEMA
Motor Type	A36070M
Mounting Arrangement	F1
Number of Poles	4
Overall Length	33.49 IN
Power Factor	86
Pulley End Bearing Type	Ball
Pulley Face Code	Standard
Service Factor	1.15
Shaft Diameter	2.375 IN
Shaft Ground Indicator	No Shaft Grounding
Shaft Rotation	Reversible
Shaft Slinger Indicator	Shaft Slinger
Speed	1780 rpm
Speed Code	Single Speed
Starting Method	Direct on line
Thermal Device - Bearing	None
Thermal Device - Winding	None

Nameplate

NP4033LUA

CAT #	ECP4316T-4			SER				CC	010A			
SPEC	A36-1114-3963			RATING	40C AMB-CONT							
HZ	VOLTS		AMPS	RPM	HP	CODE	SF	DES	PF	NEMA NOM. EFF		
60	460		86	1780	75	G	1.15	B	86 %	95.4 %		
									%	%		
PH	3	CL	F	MAX RPM	2700	MAX CORR KVAR	15.8					
BRG	DE	6313	ODE	6313	ENCL	TEFC	FR	365T	IP	55		
GREASE	POLYREX EM			MTR WT	966	LBS						
	CL I DIV 2 GRPS A,B,C,D			CL I ZONE 2 GRPS		IIA,IIB,IIC		TEMP T	200	C		
INV READY	CT	15-60	HZ	4:1	VT	0-60	HZ	1000:1	CHP	60-90	HZ	1.5:1
INV TEMP CL	200	C	USABLE AT	50HZ 60HP 380V 83.5A SF1.15								

AC induction motor performance data

Record #71698 - Typical performance - not guaranteed values

Winding	A36WG3963
Type	A3670M
Enclosure	TEFC

Nameplate data

Rated Output			75
Volts			460
Full Load Amps			86
R.P.M.			1780
Hz	60	Phase	3
KVA Code			F
S.F.			1.15
NEMA Nom. Eff.	95	Power Factor	86
Duty			CONT
S.F. Amps			

460 V, 60 Hz:
Single Voltage Motor

Full Load Torque	220.2 LB-FT
Start Configuration	direct on line
Breakdown Torque	542 LB-FT
Pull-up Torque	372 LB-FT
Locked-rotor Torque	445 LB-FT
Starting Current	541 A
No-load Current	27.9
Line-line Res. @ 25°C	0.082276 Ω
Temp. Rise @ Rated Load	55°C
Temp. Rise @ S.F. Load	69°C
Locked-rotor Power Factor	31.8
Rotor inertia	16.2 lb-ft ²

Load Characteristics 460 V, 60 Hz, 75 HP

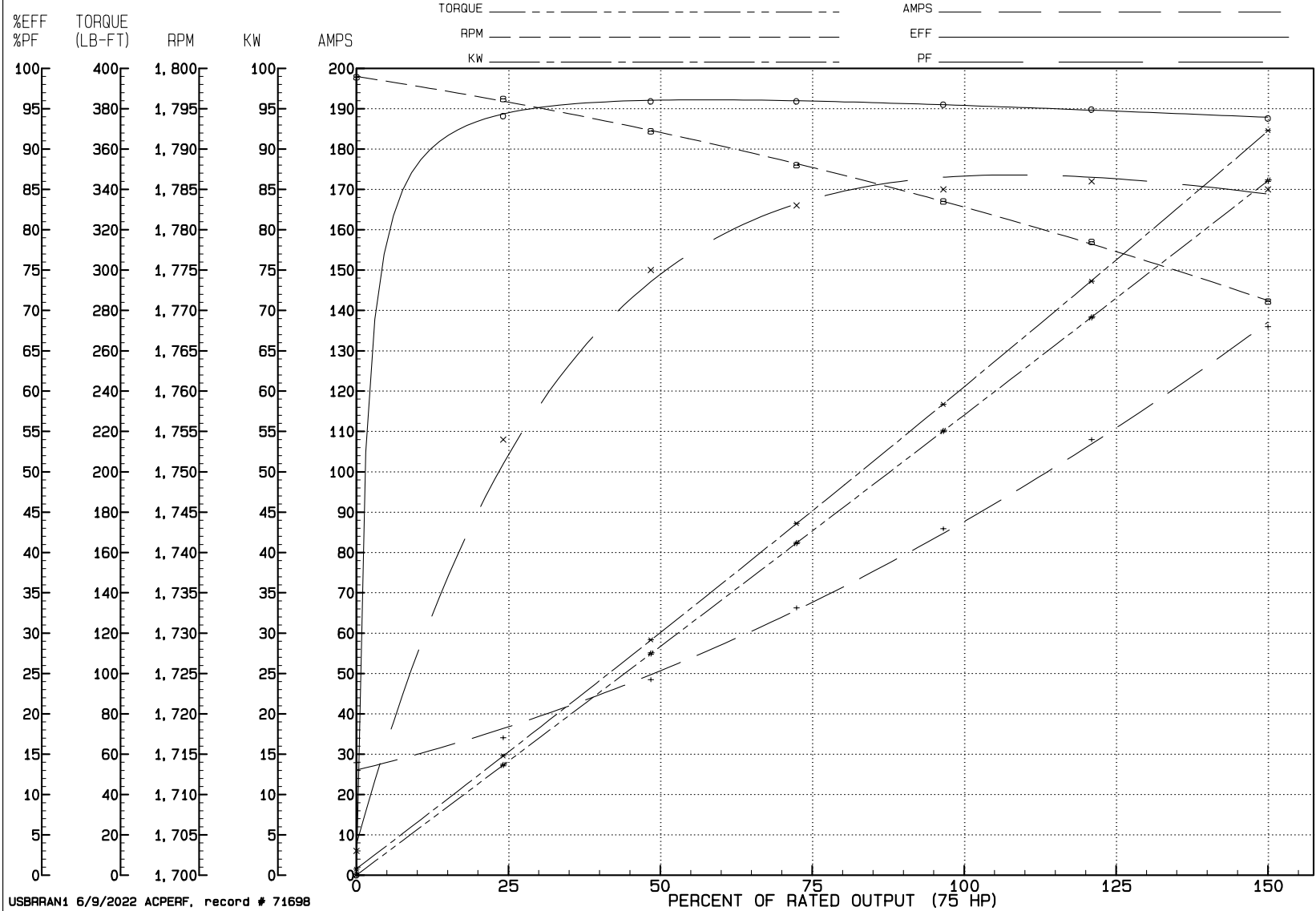
% of Rated Load	NL	25	50	75	100	125	150	SF
Power Factor	3	54	75	83	85	86	85	86
Efficiency	0	94.1	95.9	95.9	95.5	94.9	93.8	95.1
Speed	1798.9	1796.2	1792.2	1788	1783.5	1778.5	1771.1	1780
Line amperes	27.9	34.1	48.5	66.3	85.9	108	136	99.2

REVIEW

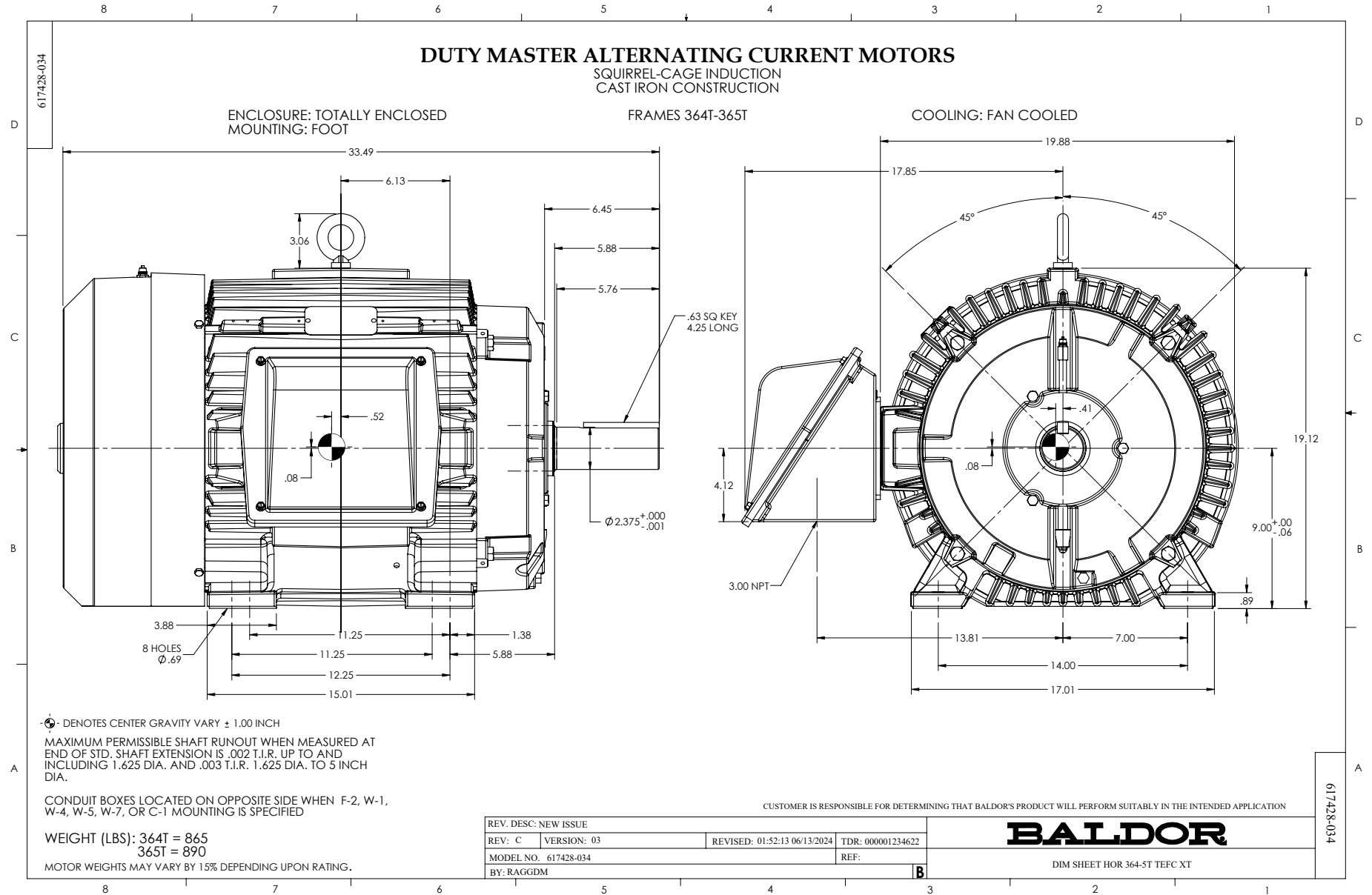
WINDING # A36WG3963

75 HP 3 PH 60 HZ 1780 RPM 460 V A3670M

TORQUES (LB-FT): P0=542.00 PU=372.00 LR=445.00 LRA=541.00



USBRRAN1 6/9/2022 ACPERF, record # 71698



416820-036

A-C MOTOR
CONNECTION DIAGRAM
STANDARD 3 LEAD CONNECTED



(N.P. 1575-BA)

416820-036

REV. DESC: LOADED TO BUS, C/R 335225		
REV. LTR: -	VERSION: 00	TDR: 000000538207
FILE: \MGA\00000\682	REVISED: 11:54:06 04/30/2010	
MTL: -	BY: RAGRA	

BALDOR

CONN DIAG - STANDARD 3 LEAD
SH 1 of 1